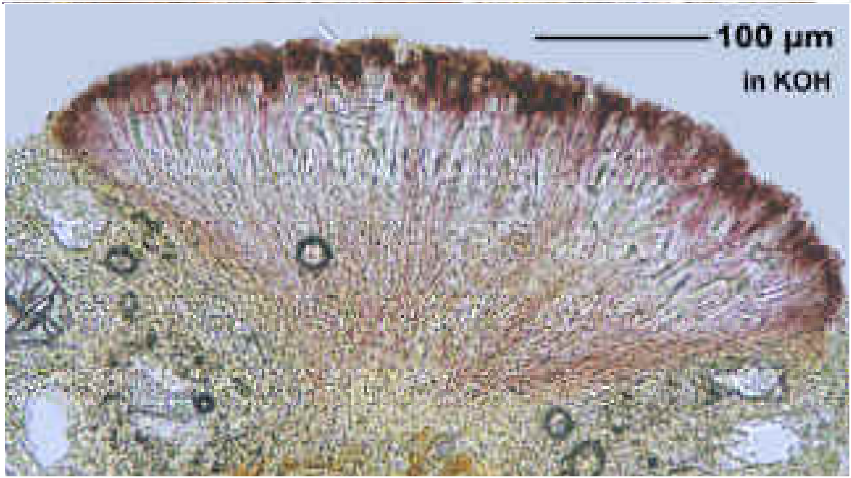
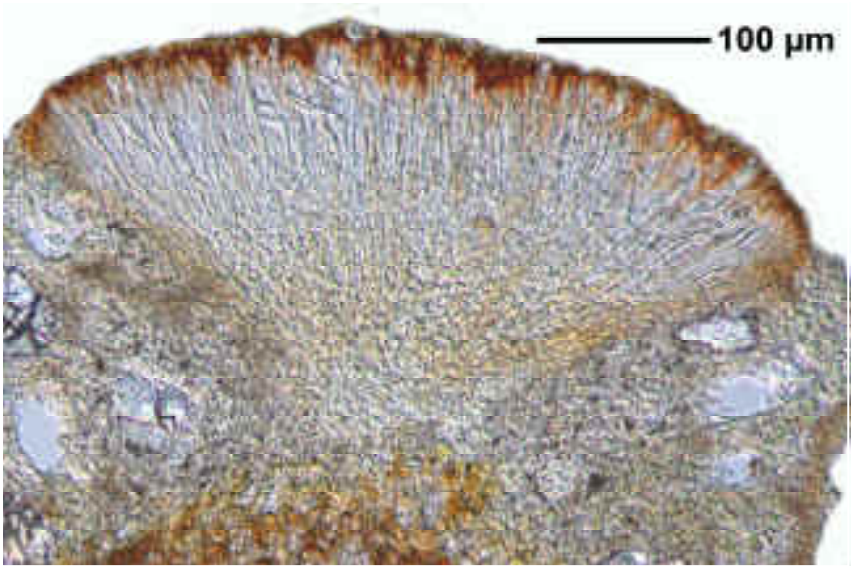


*Haematomma persoonii* (Fée) A.Massal.

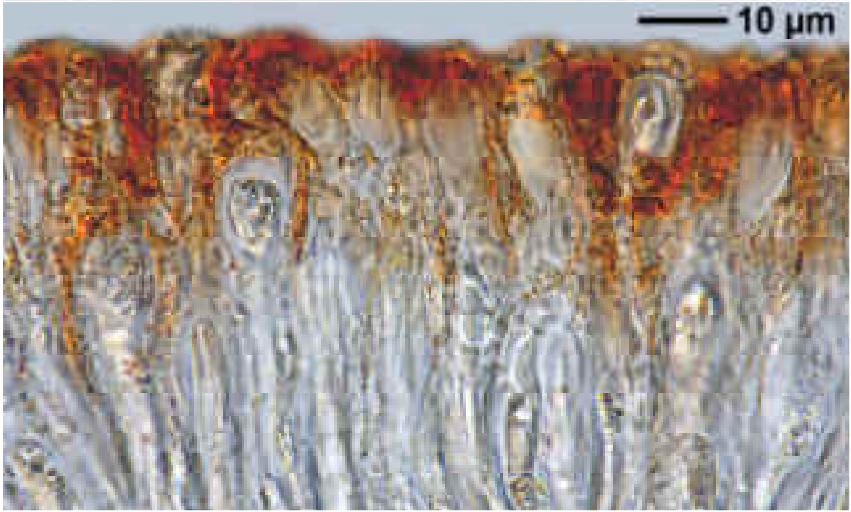
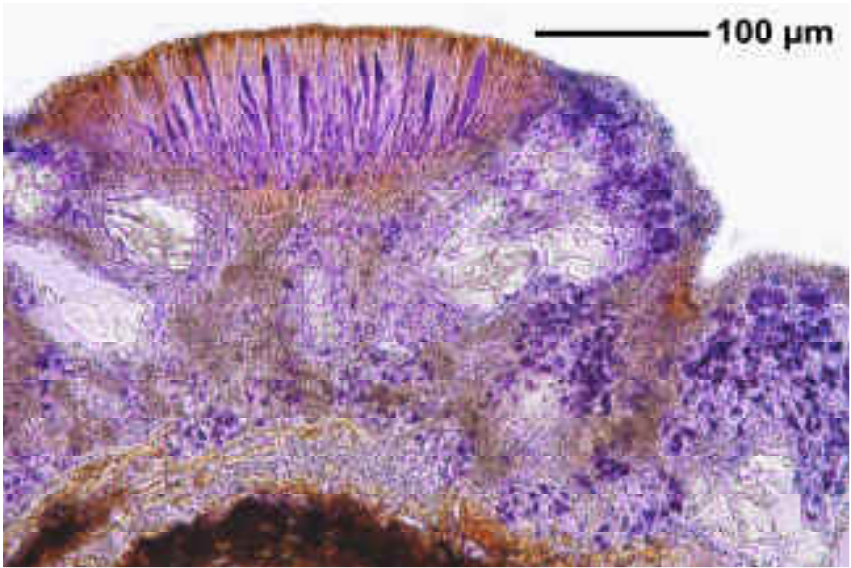
Apothecia broad sessile, partly sunken in the thallus. Epithecium K+ durable violet (russulone). Ascospores up to 6-septate, c. 36-37 x 4,2 µm. Chemistry: thallus UV-, atranorin, russulone, sphaerophorine (TLC).

[5801], Madagaskar, Süd-Madagaskar, Berenti Park, an Eucalyptus, ca. 100 m alt, together with *Glyphis cicatricosa* and *Glyphis scyphuliferum*. Leg. Schumm 28.12.1992, det. Schumm 2010.





*Haematomma persoonii*



*Haematomma persoonii*