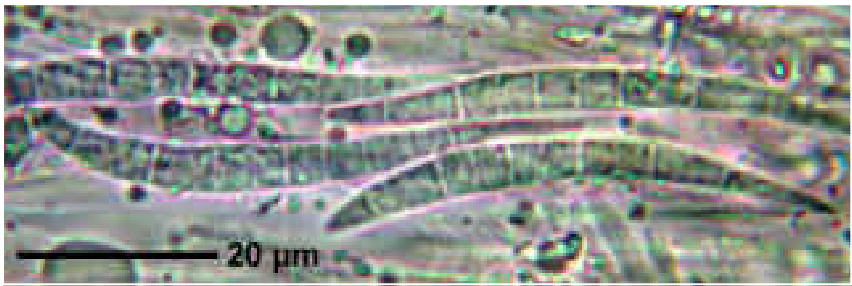
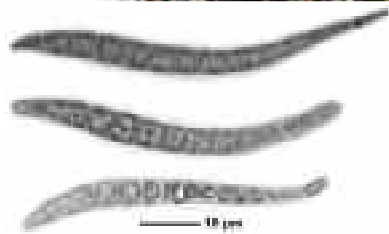


***Haematomma rufidulum*** (Fée) A.Massal.

Thallus pale to greenish grey, uneven, warty, cracked. Soredia and isidia absent. Apothecia sessile, 1-2 mm, discs red, thalline margin wavy or crenulate. Epithecium K+ durable violet-red (russulone). Ascospores hyaline, 8/ascus, 10-11(-20)-cellular, straight or somewhat „s“-curved, 51-54(-63) x 4.5-5.5 µm. Corticolous. Chemistry: Thallus UV-, atranorin, placodiolic acid, russulone (TLC).

[6221], Philippinen, Mindanao, Provinz Bukidnon, westlich Malabalay in Intavas am Fuß des Mt. Kitanglad, 08°11.883' N, 124°56.721' E, 1270 m. Leg. Schumm 18.08.1999, det. Schumm 2008.





*Haematomma rufidulum*