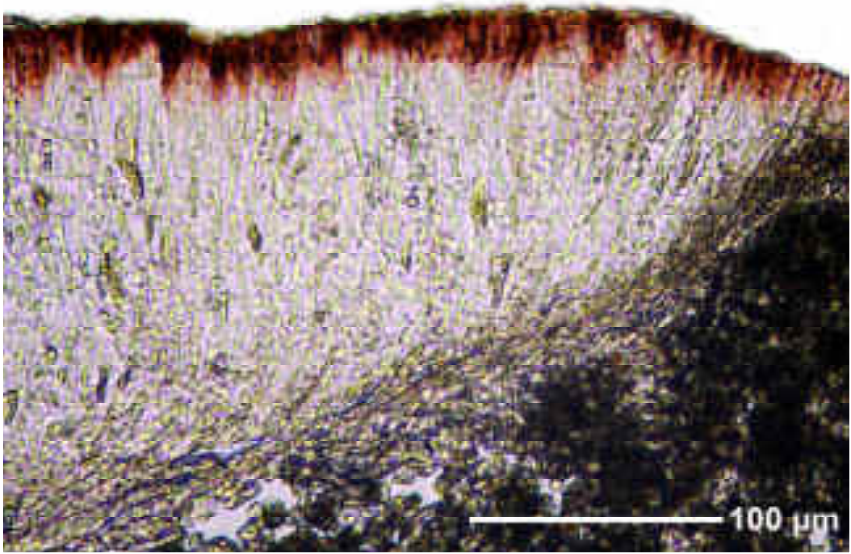
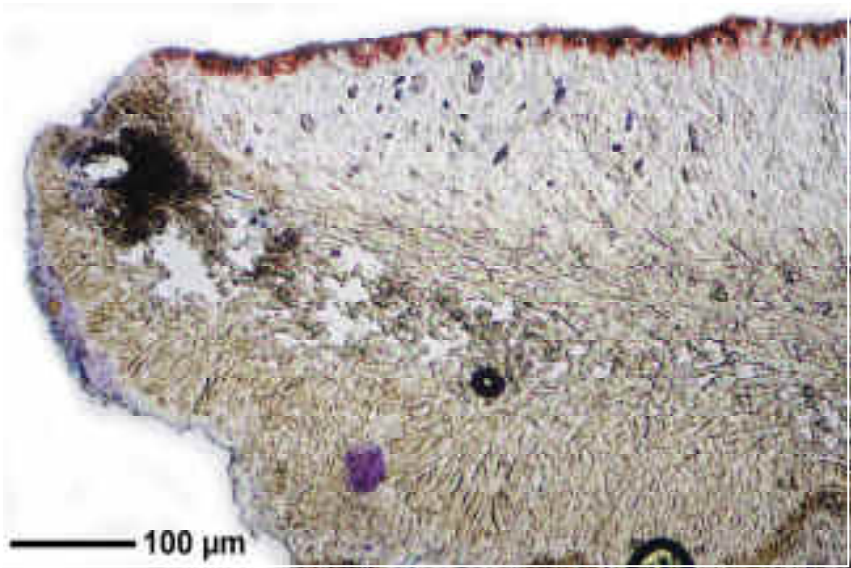


Haematomma wattii (Stirt.) Zahlbr.

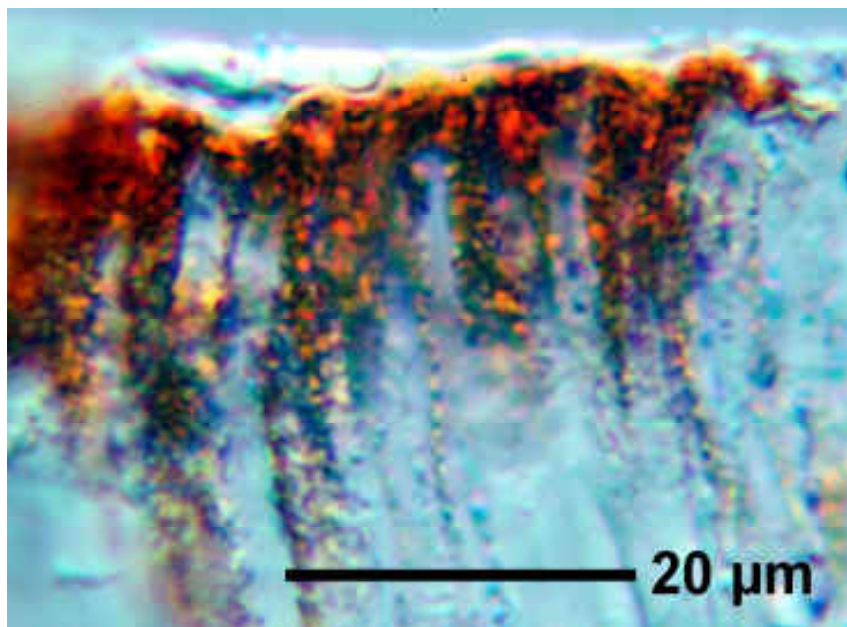
Thallus pale to greenish grey, smooth or uneven to warty cracked. Isidia and soredia absent. Apothecia sessile, 0.5-2 mm, disc red, thalline margin mostly simple but also crenulate. Epithecium with red pigment, K+ violet, quickly fading (haematommone). Ascospores finally muriform, transverse 18-septate (variable!), segments with 1-3 longitudinal septae, 50-95 x 6.5-10 μm , mostly 4/ascus. Corticolous. Chemistry: thallus and margin of Apothecia UV+ yellow, atranorin, placodiolic acid, haematommone. Lit. Staiger & Kalb (1995)

[6275], Philippinen, Mindanao, Provinz Bukidnon, westlich Malabalay, tropischer Regenwald am Mt. Kitanglad ab Zwischen-Campsite, 08°09.637' N, 124°55.871' E, 1870-2800 m. Leg. Schumm 19.08.1999, Staiger 08.04.2000.





Haematomma wattii



Haematomma wattii