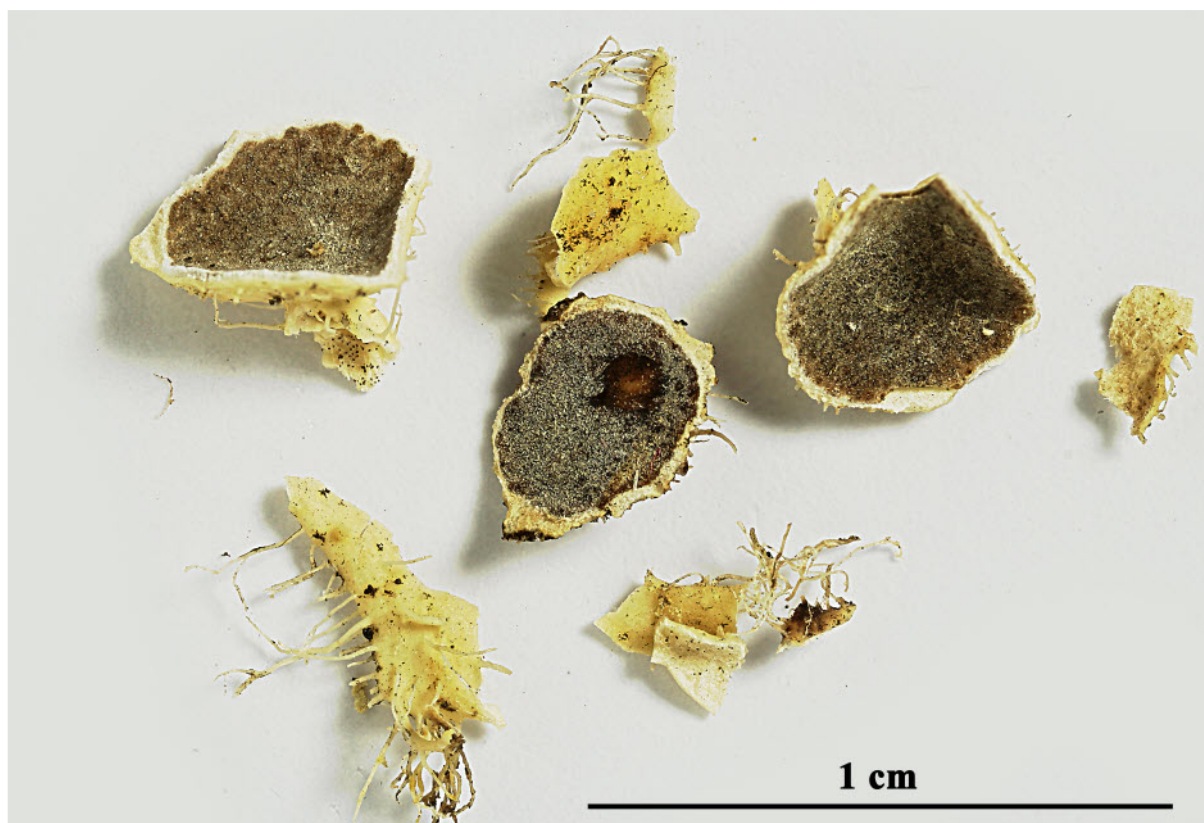


***Heterodermia comosa* (Eschw.) Follmann & Redón - Epitypus**
[= *Parmelia comosa* Eschw.]

[UPS-171729], Brazil, Minas Geraes, Caldas, ad arborum. Leg. Hjalmar Mosén, 08.1873. Ref.: Icones sel. Plant. Crypt.: 26. Tab. 12, Fig. 1 (1827). Epitype Moberg, Bryology 102:4 (1999). Ex Herb. Univ. Uppsaliensis.

Chemistry: at: atranorin, z: zeorin, 1: ???,
2: 16 β -acetoxyhopane-6 α ,22-diol, 3: leucotylin

Rem.: When K. Kalb visited me in 2015 he gave me some fragments of this sample, from which he had already made a TLC. So I could make a second acetone extraction. Unfortunately he did not loan me the type for some days to make pictures. So I was forced to make images from this fragments only if my HPTLC should be accompanied by lichen images.

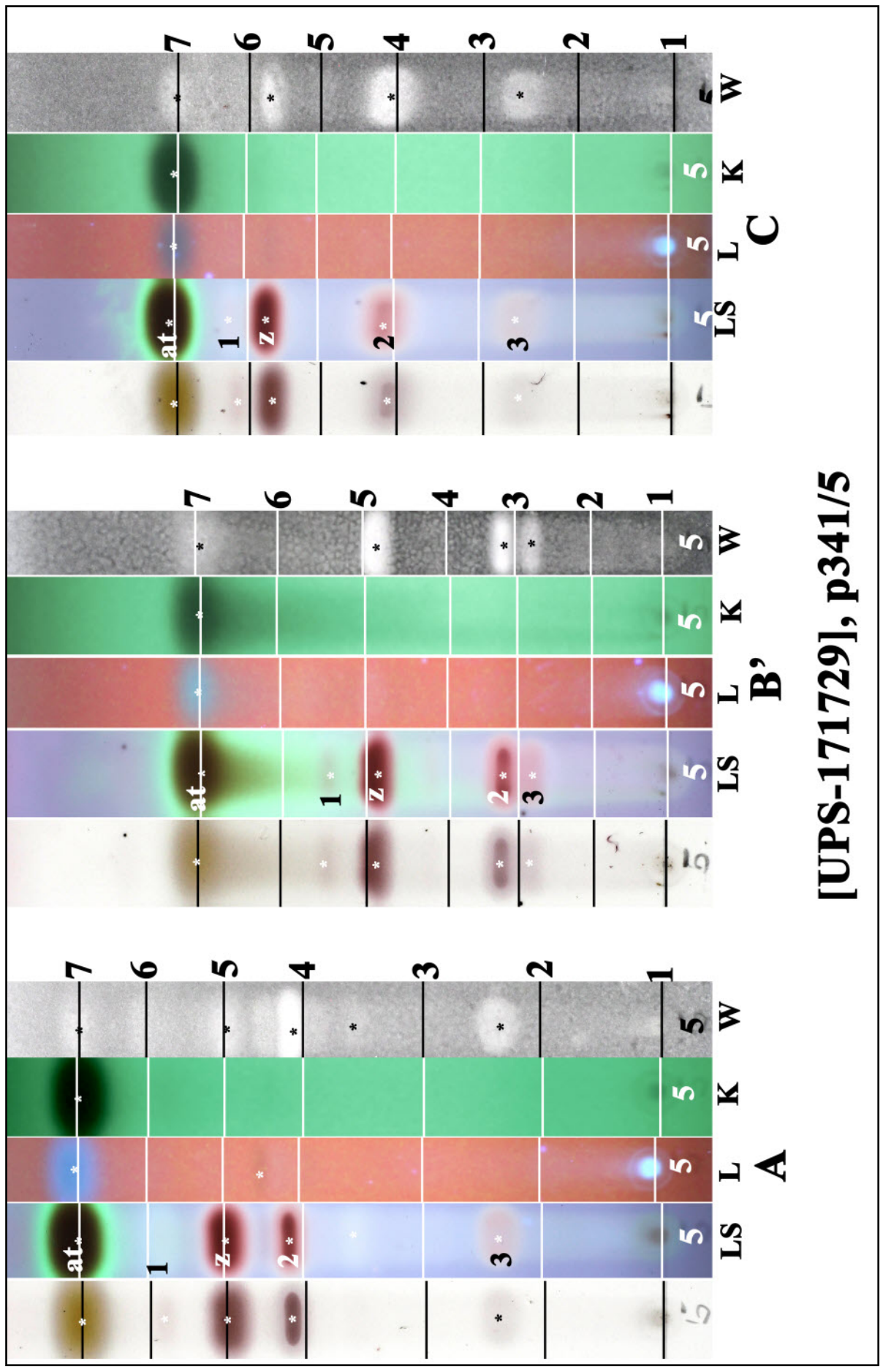




Heterodermia comosa



Heterodermia comosa



[UPS-171729], p341/5

at: atranorin, z: zeorin, 1: ?, 2: 16β-acetoxypopane-6α,22-diol, 3: leucotylin

Heterodermia comosa