

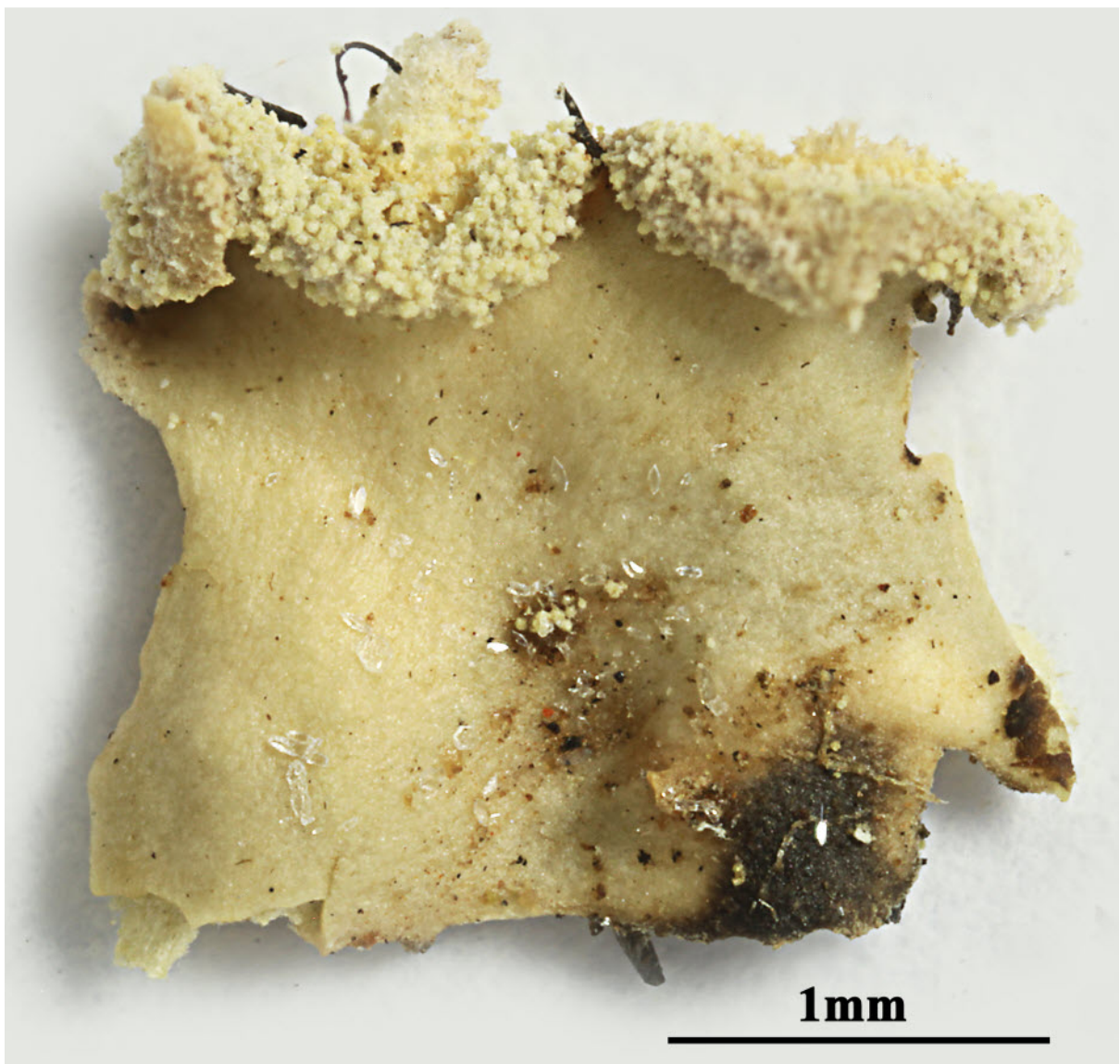
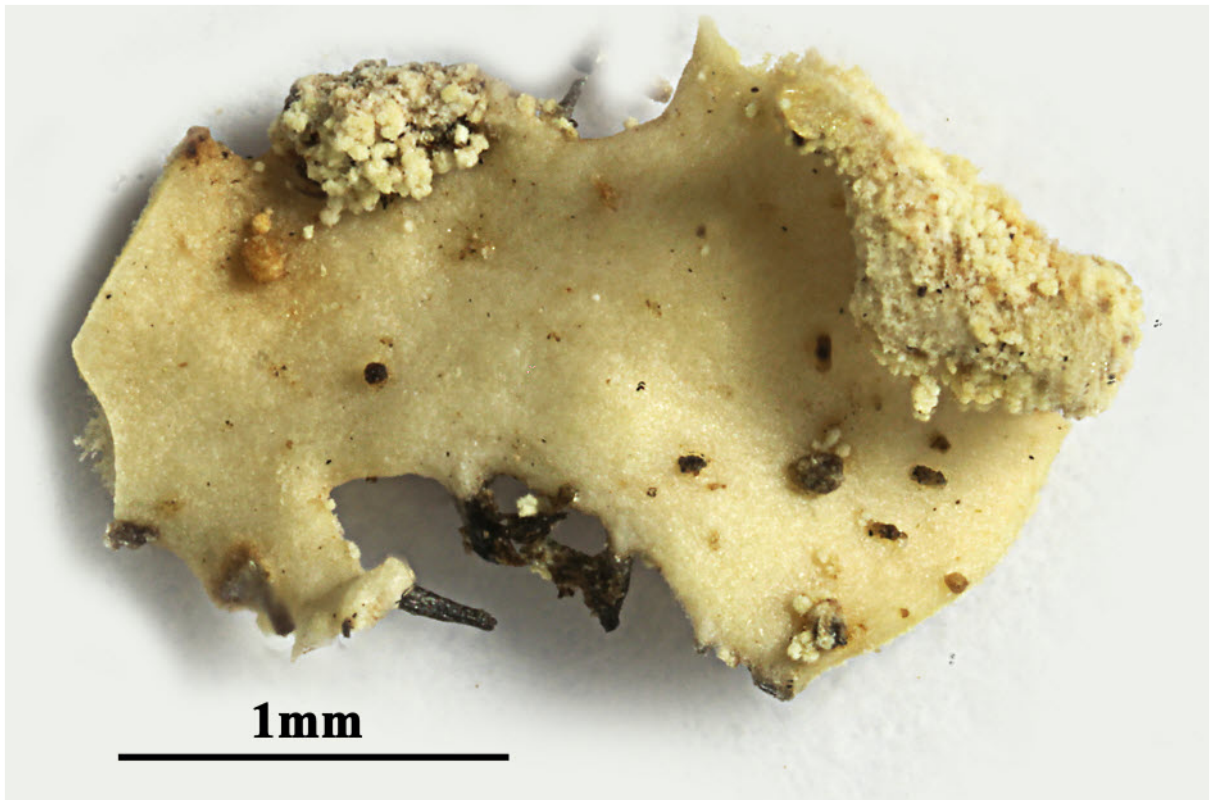
Heterodermia hybocarponica Elix - Isotype

[JAE-39336], Victoria, Morwell National Park, Fosters Gully Nature Walk, 16 km S of Morwell, 38°21'24" S, 146°23'27" E, 230 m, wet *Eucalyptus* forest with *Pomaderris* understorey, on base of tree. Leg. J.A. Elix, 12.04.2008.

at: atranorin, z: zeorin, 1: ???, 2: 6 α -acetoxyhopane-16 β ,22-diol, 3: ???, 4: hybocarpone, 5: norhybocarpone

Rem.: When K. Kalb visited me in 2015 he gave me some fragments of this sample, from which he had already made a TLC. So I could make a second acetone extraction. Unfortunately he did not loan me the type for some days to make pictures. So I was forced to make images from this fragments only if my HPTLC should be accompanied by lichen images.

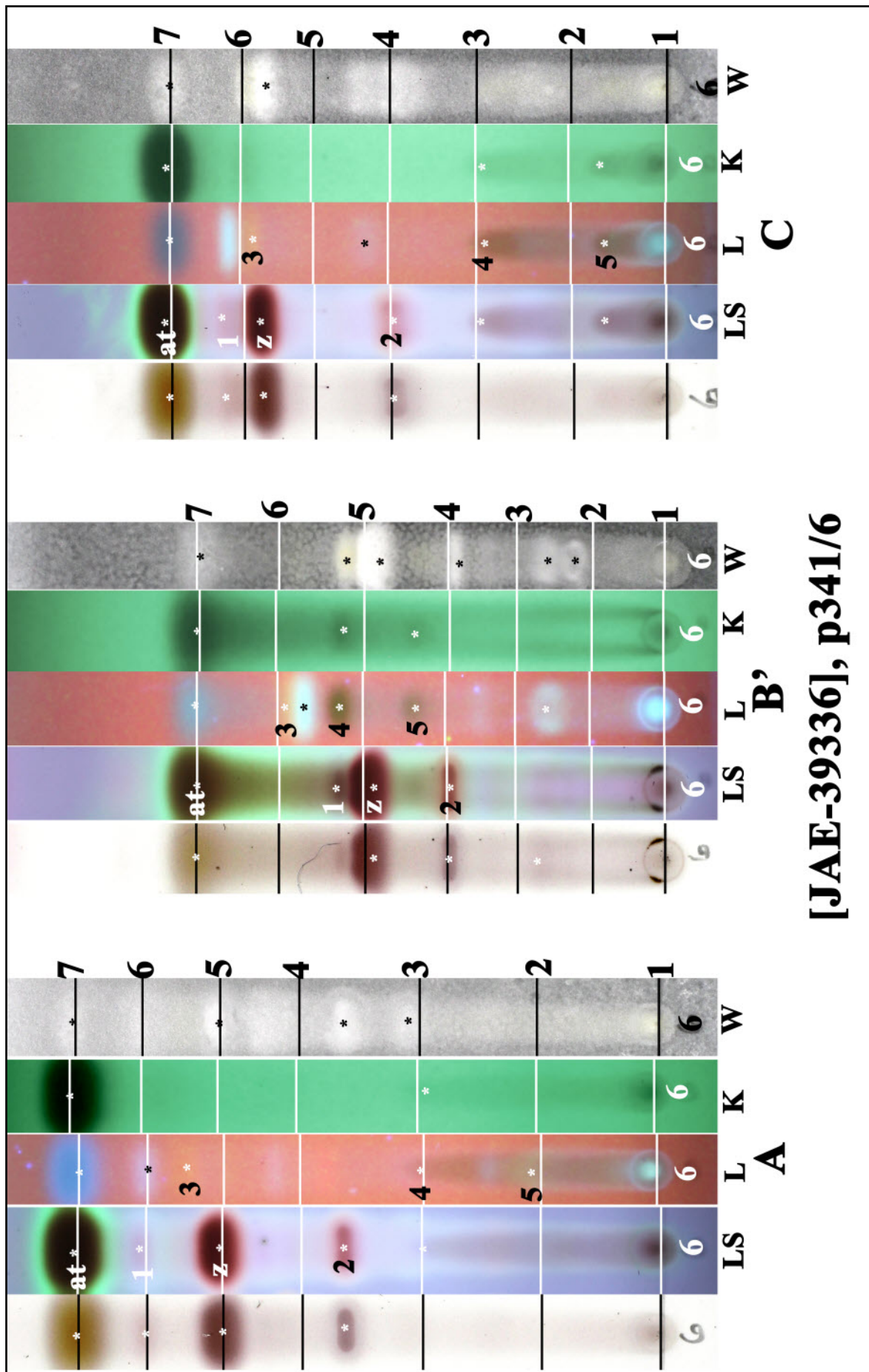




Heterodermia hybocarponica



Heterodermia hybocarponica



[JAE-393336], p341/6

at: atranorin, z: zeorin, 1: ???, 2: 6 α -acetoxyhopane-16 β ,22-diol, 3: ???, 4: hybocarponone, 5: norhybocarponone

Heterodermia hybocarponica