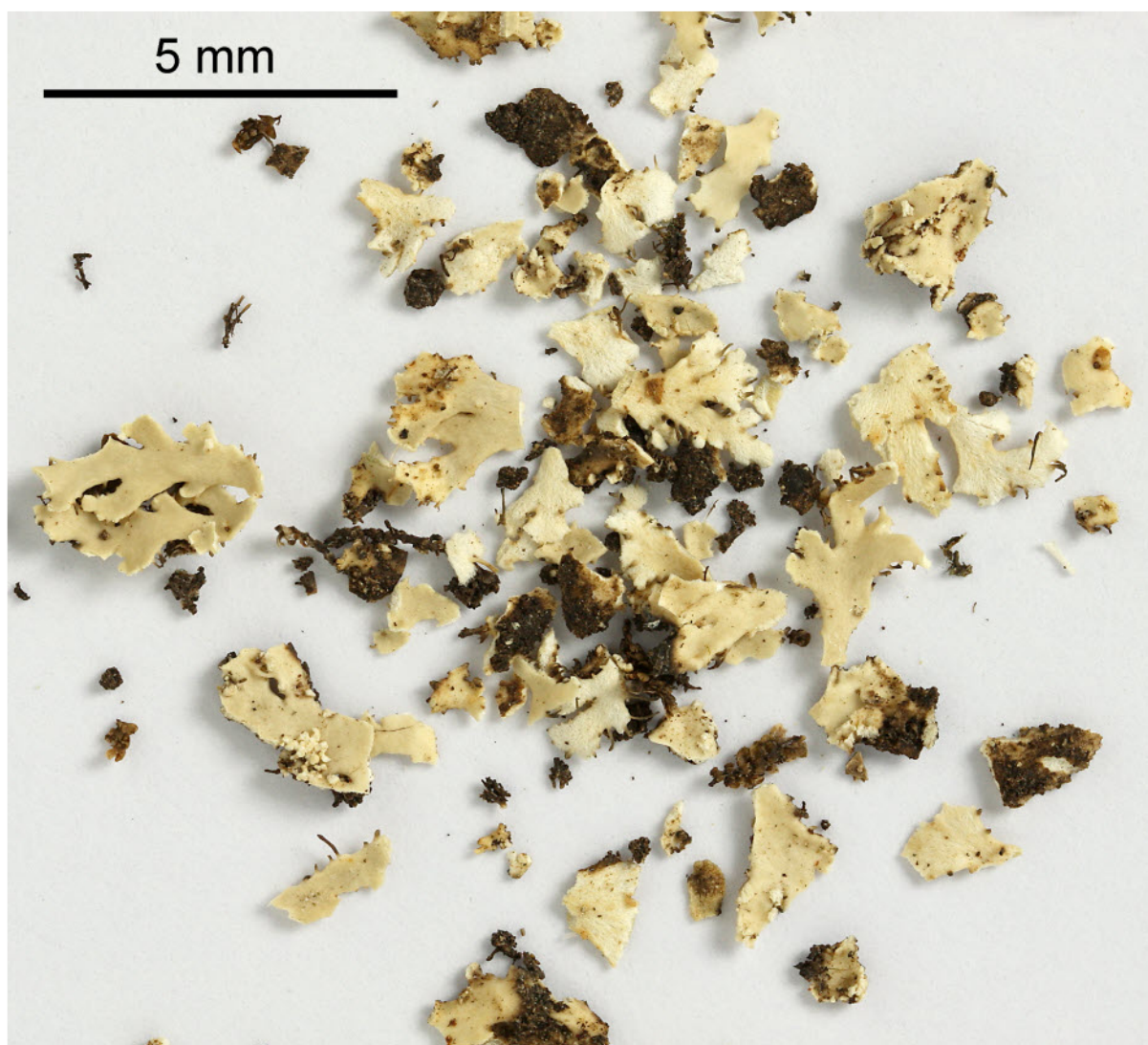


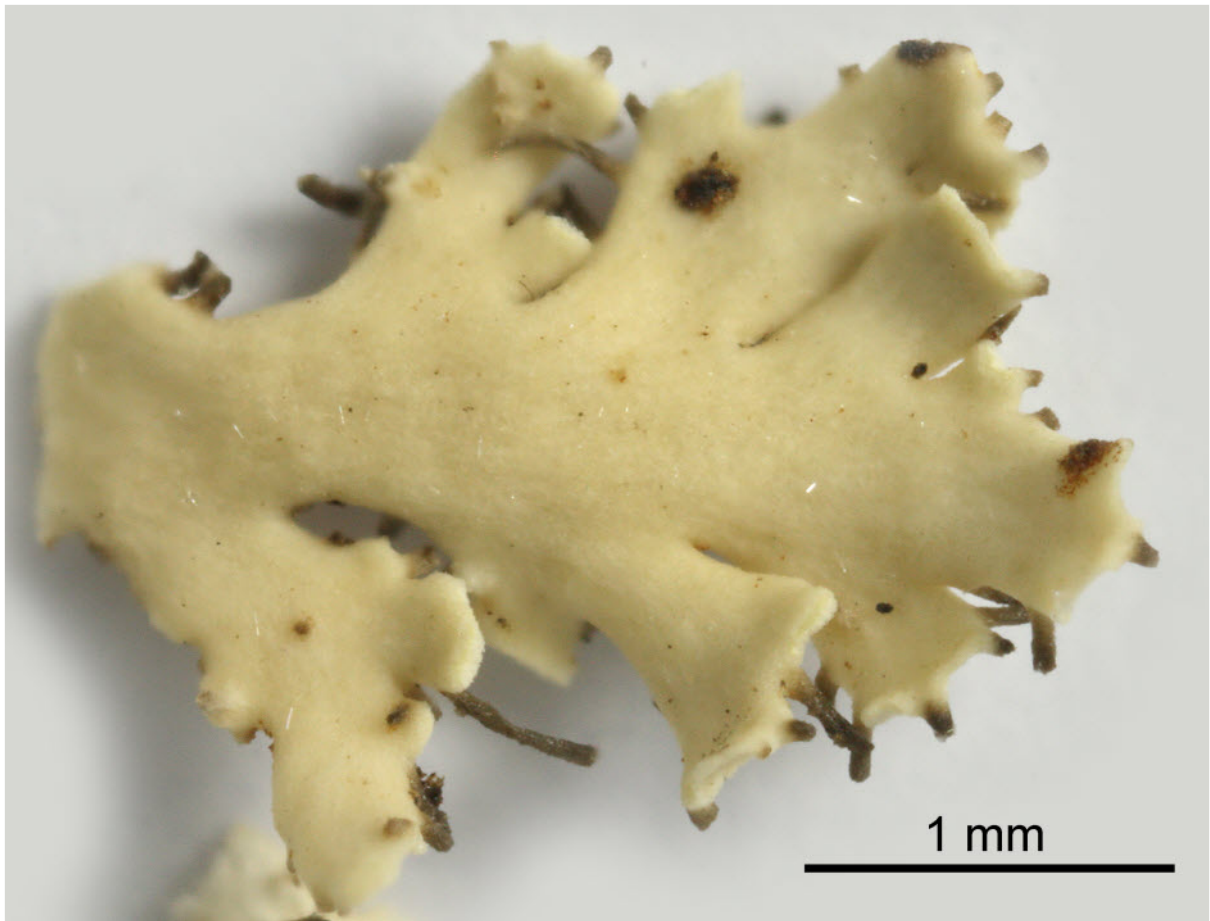
Heterodermia isidiophorella Elix Holotype

[JAE-16465], Australia, Queensland, Cook district, Mt. Windsor Tableland, 45 km NW of Mossman, 16°15' S, 145°01' E, 1200 m, in stunted open rainforest, on *Flindersia*. Leg. J.A. Elix & H. Streimann, 26.06.1984. Lit. Australasian Lichenology 69: 13 (2011).

Chemistry: at: atranorin, z: zeorin, 1: ???, 2: ???, 3: 6 α -acetoxyhopane-16 β ,22-diol, 4: leucotylin.

Rem.: When K. Kalb visited me in 2015 he gave me some fragments of this sample, from which he had already made a TLC. So I could make a second acetone extraction. Unfortunately he did not loan me the type for some days to make pictures. So I was forced to make images from this fragments only if my HPTLC should be accompanied by lichen images.

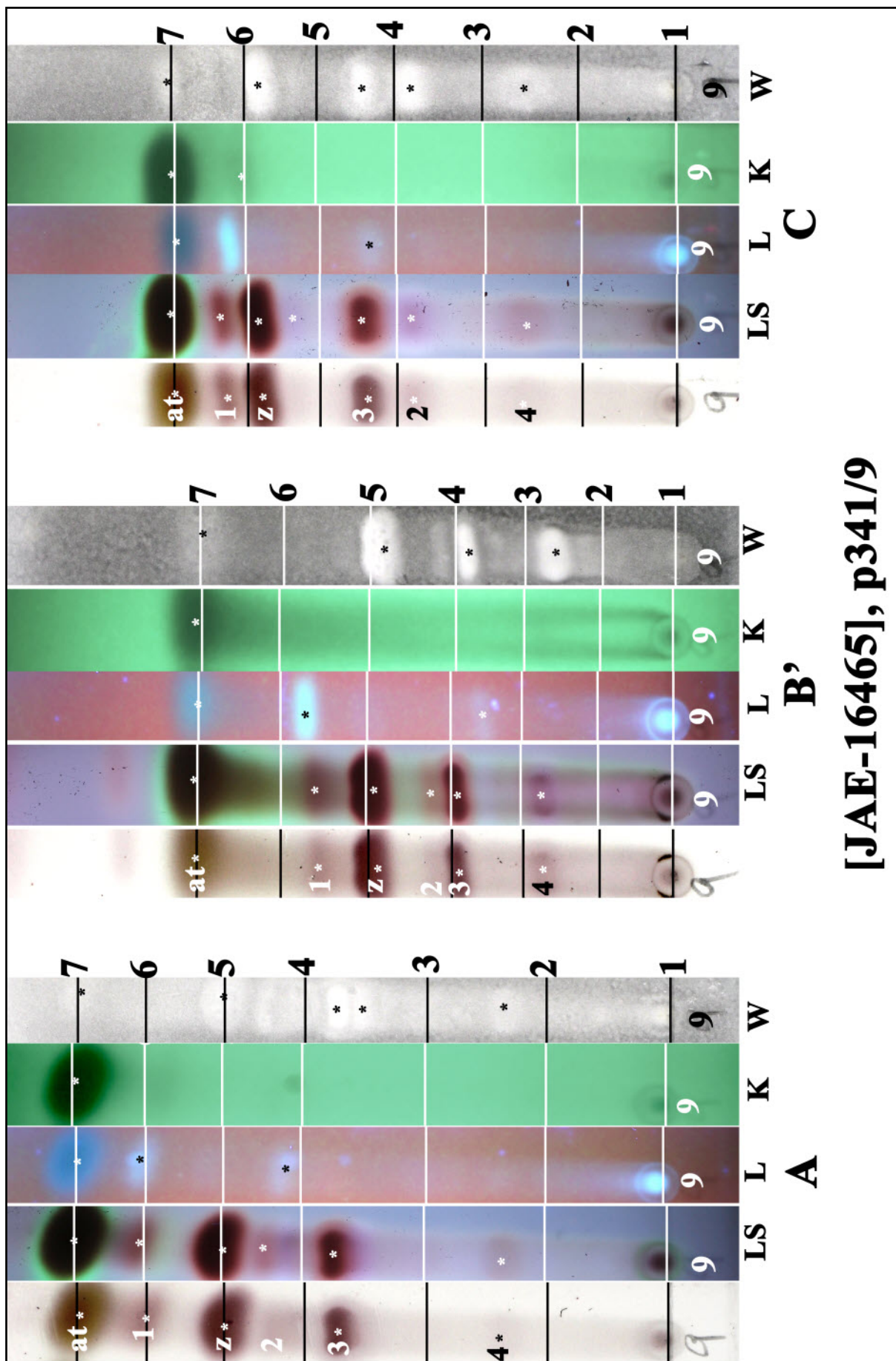




Heterodermia isidiophorella



Heterodermia isidiophorella



[JAE-16465], p341/9

at: atranorin, z: zeorin, 1: ???, 2: ???,
 3: 6 α -acetoxyhopane-16 β ,22-diol, 4: leucotylin.

Heterodermia isidiophorella