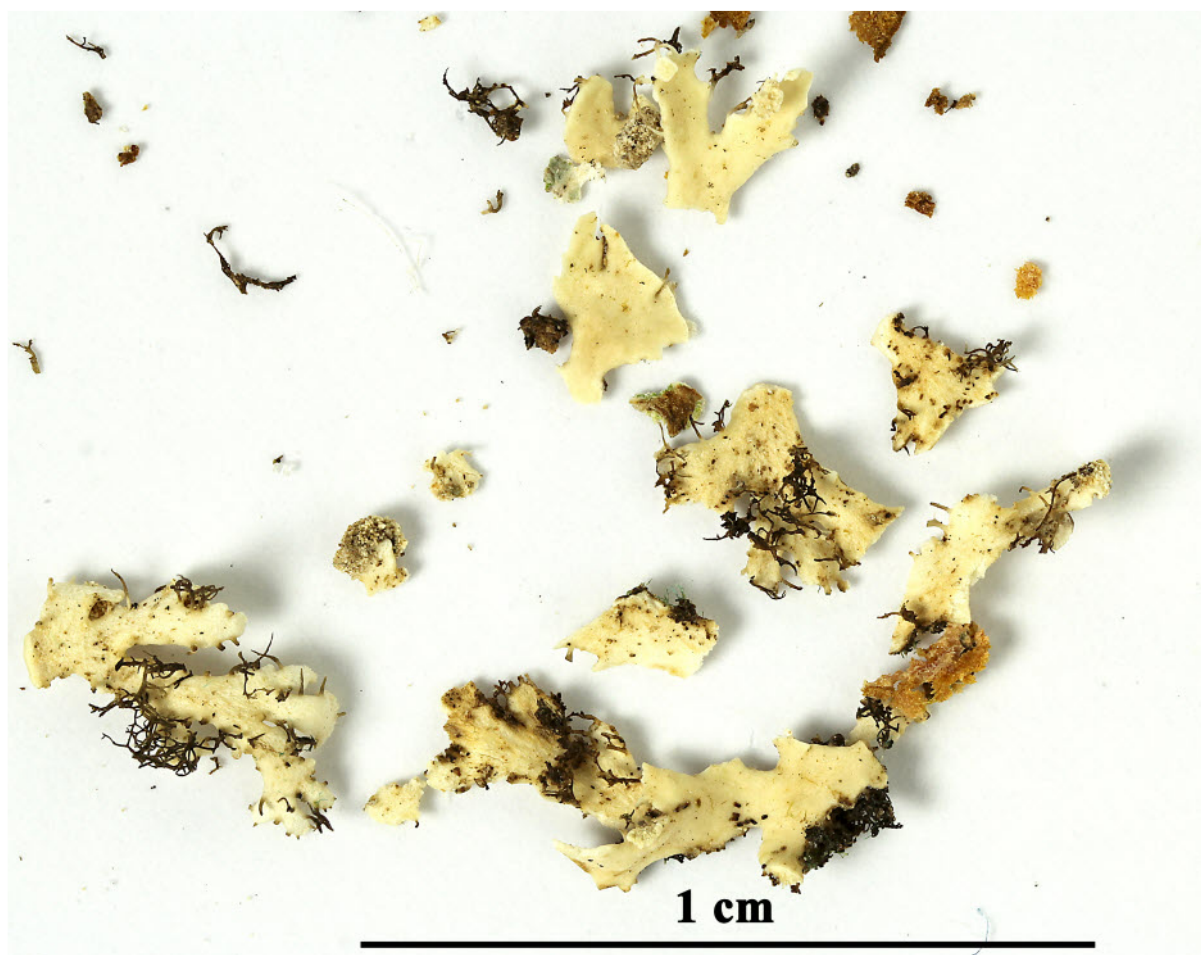


***Heterodermia koyanoides* Elix TYPUS**

[JAE-16308], Australia, Queensland, Cook district, Dreat Dividing Range, Mt. Baldy, 4 km SW of Atherton, 17°17' S, 145°27' E, 1080 m, along the margin of regrowth rainforest, on sapling. Leg. J.A. Elix & H. Streimann, 25. Juni 1984. Lit. Australasian Lichenology 69:14 (2011).

Chemistry: at: atranorin, z: zeorin, 1: 16 β -acetoxyhopane-6 α ,22-diol, 2: ???, 3: ???, 4: leucotylin

Rem.: When K. Kalb visited me in 2015 he gave me some fragments of this sample, from which he had already made a TLC. So I could make a second acetone extraction. Unfortunately he did not loan me the type for some days to make pictures. So I was forced to make images from this fragments only if my HPTLC should be accompanied by lichen images.





Heterodermia koyanoides

