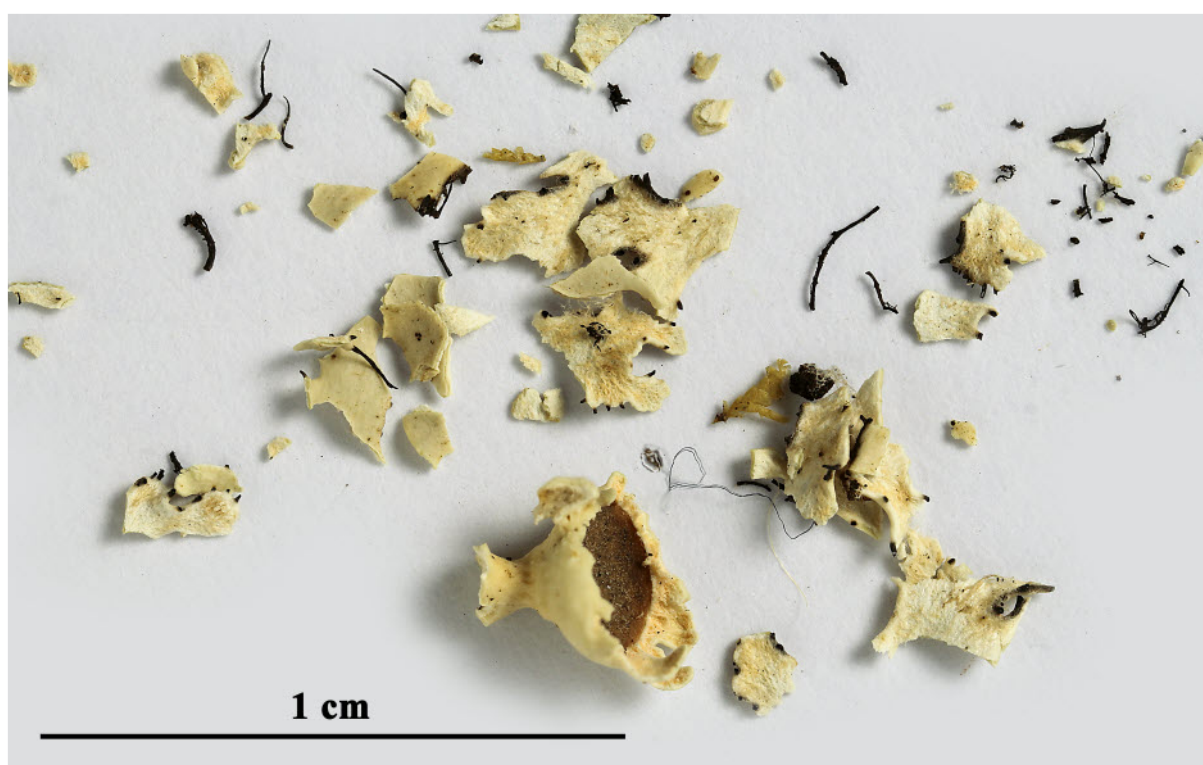


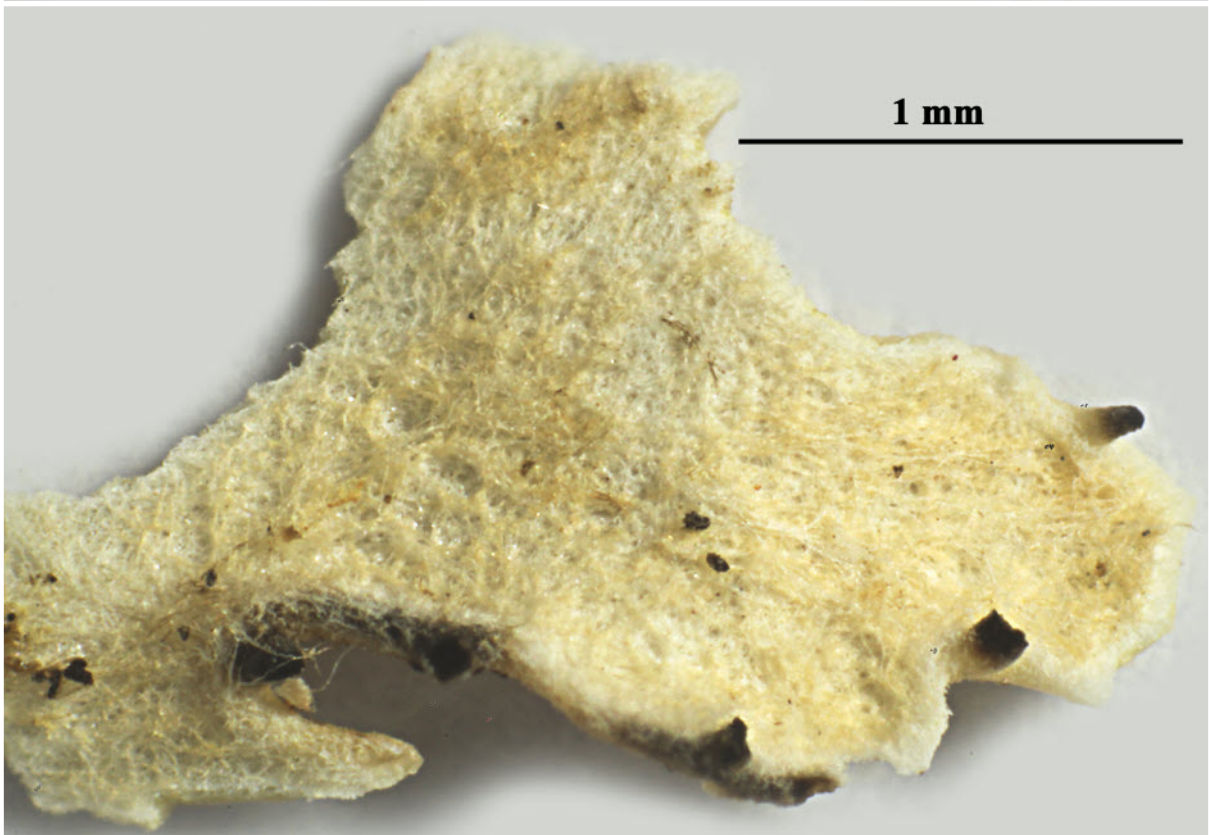
Heterodermia queenslandica Elix - Holotypus

[JAE-16310], Australia, Queensland, Cook district, Great Dividing Range, Mt. Baldy, 4 km SW of Atherton, 17°17' S, 145°27' E, 1080 m, along the margin of regrowth rainforest, on sapling. Leg. J.A. Elix & H. Streimann, 25.06.1984. Lit. Australasian Lichenology 61: 5. (2010).

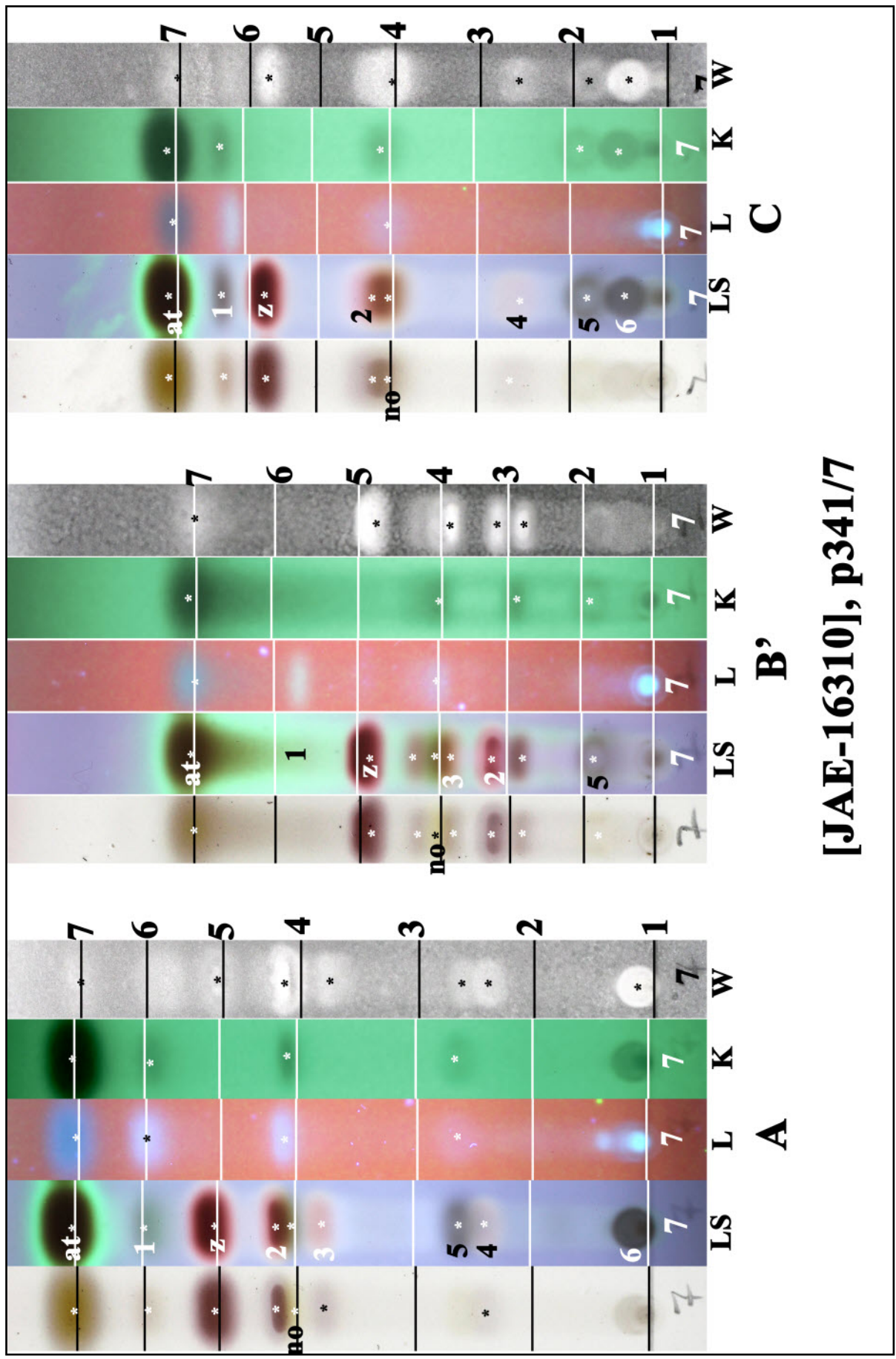
at: atranorin, z: zeorin, no: norstictic acid, 1: ???, 2: 6 α -acetoxyhopane-16 β ,22-diol, 3: ???, 4: leucotylin, 5: ???, 6: ???

Rem.: When K. Kalb visited me in 2015 he gave me some fragments of this sample, from which he had already made a TLC. So I could make a second acetone extraction. Unfortunately he did not loan me the type for some days to make pictures. So I was forced to make images from this fragments only if my HPTLC should be accompanied by lichen images.





Heterodermia queenslandica



[JAE-16310], p341/7

at: atranorin, z: zeorin, no: norstictic acid, 1: ???,
 2: 6 α -acetoxyhopane-16 β ,22-diol, 3: ???, 4: leucotylin, 5: ???, 6: ???

Heterodermia queenslandica