

*Heterodermia tasmanica* Elix - Holotype

Lobes lobulate, sorediate; lower surface ecorticated, pigmented. Lit. Australasian Lichenology 69: 15 (2011).

[JAE-5685], Australia, Tasmania, Fernandene Groge, 5 km S of Penguin, 41°09' S, 146°02' E, wet sclerophyll forest, on dead wood. Leg. J.A. Elix, 21.01.1979. Chemistry: atranorin, zeorin, 7-chloroemodin, physciin-d, unknowns-6,10 by TLC, HPLC, anal. J.A. Elix.

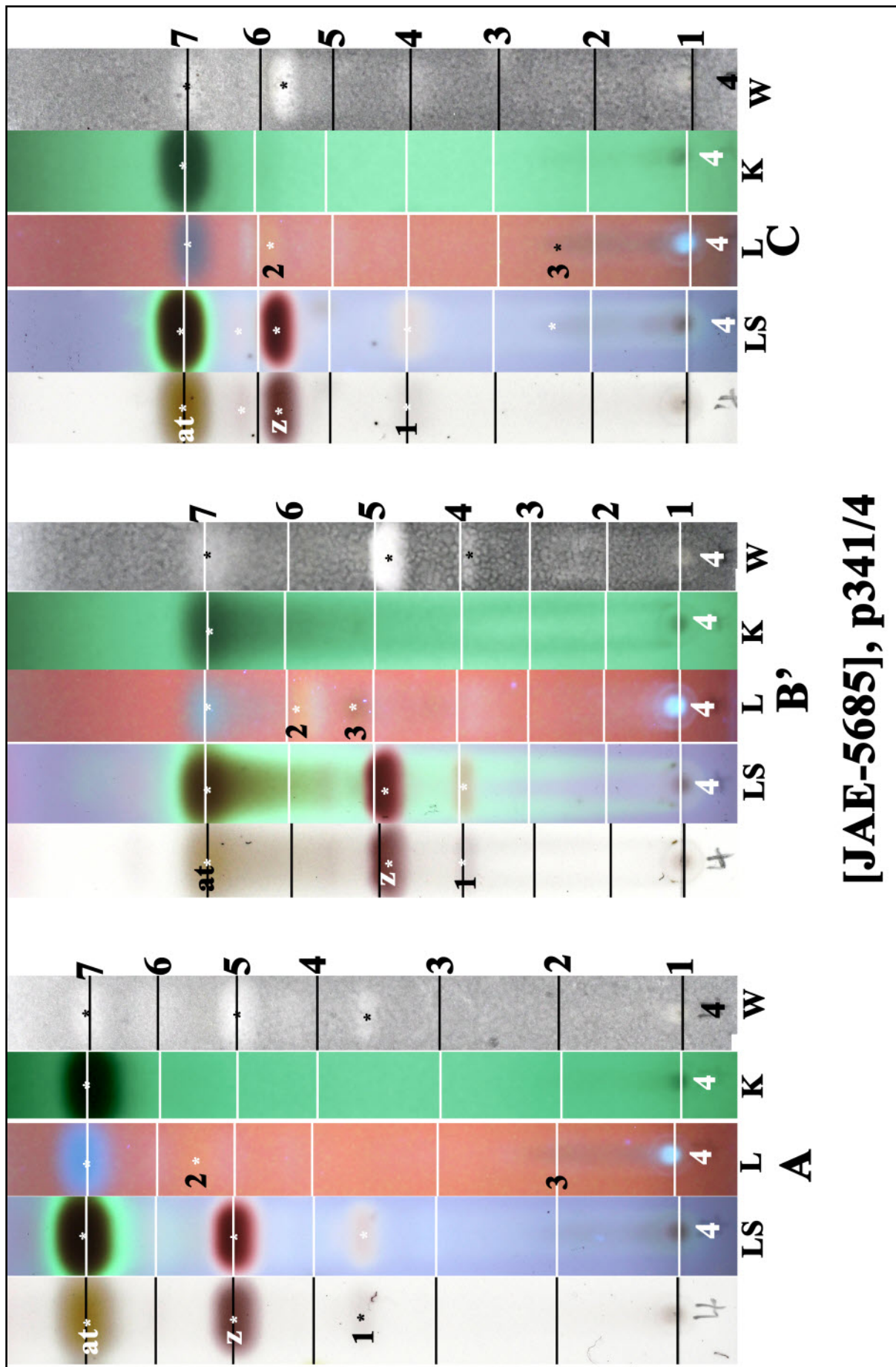
Chemistry: at: atranorin, z: zeorin, 1: ???, 2: ???, 3: hybocarpone

Rem.: When K. Kalb visited me in 2015 he gave me some fragments of this sample, from which he had already made a TLC. So I could make a second acetone extraction. Unfortunately he did not loan me the type for some days to make pictures. So I was forced to make images from this fragments only if my HPTLC should be accompanied by lichen images.





*Heterodermia tasmanica*



[JAE-5685], p341/4

at: atranorin, z: zeorin, 1: ???, 2: ???, 3: hybocarpone

*Heterodermia tasmanica*