

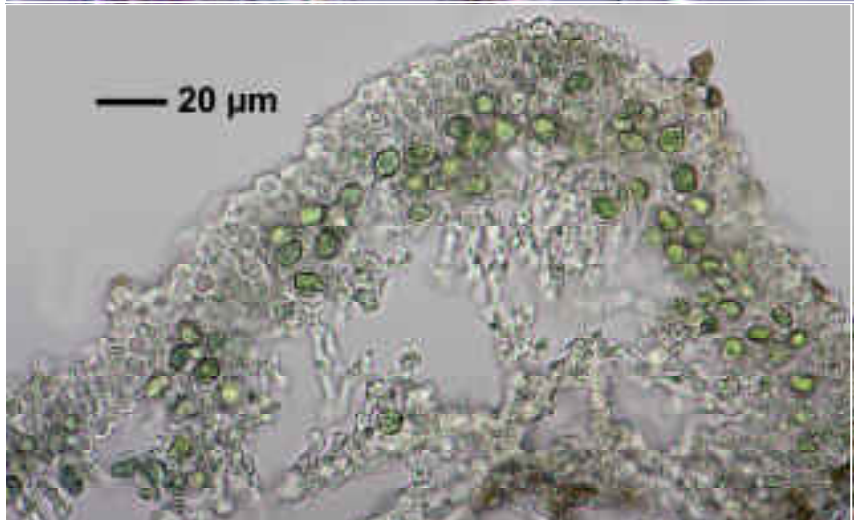
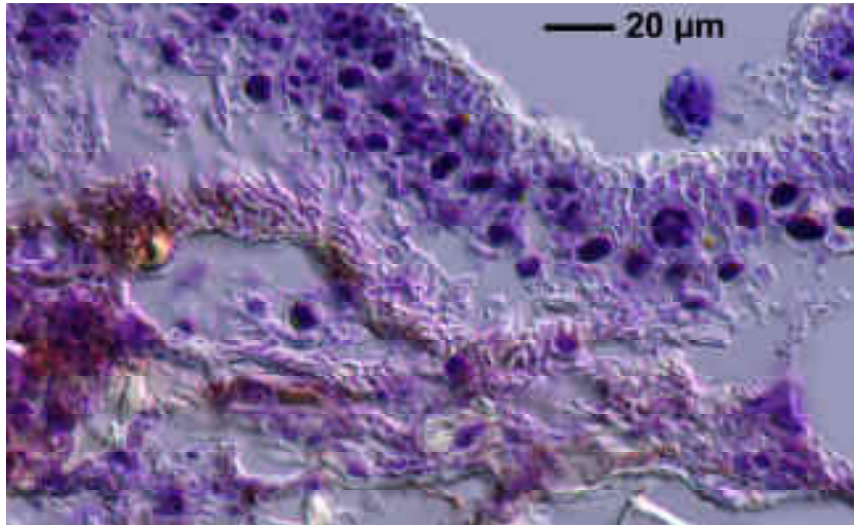
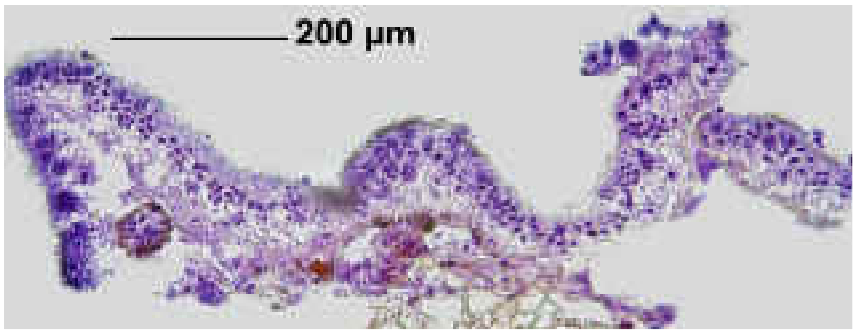


*Hyperphyscia adglutinata* (Flörke) Mayrhofer & Poelt

Endlappen 0,3-0,45 mm breit, dicht anliegend, Sorale laminal, körnig isidiös, erst oval dann zusammenfließend.

Lobes 0,3-0,44 mm wide, very closely adpressed. Soralia laminal, ± confluent at the centre of the thallus. Lower cortex prosoplectenchymatous. K-, C-, KC-, P-, UV-. Corticolous. Cosmopolitan.

[11971], Frankreich, Cotes d'Amor, leg. P. Diederich



*Hyperphyscia adglutinata* Fortsetzung