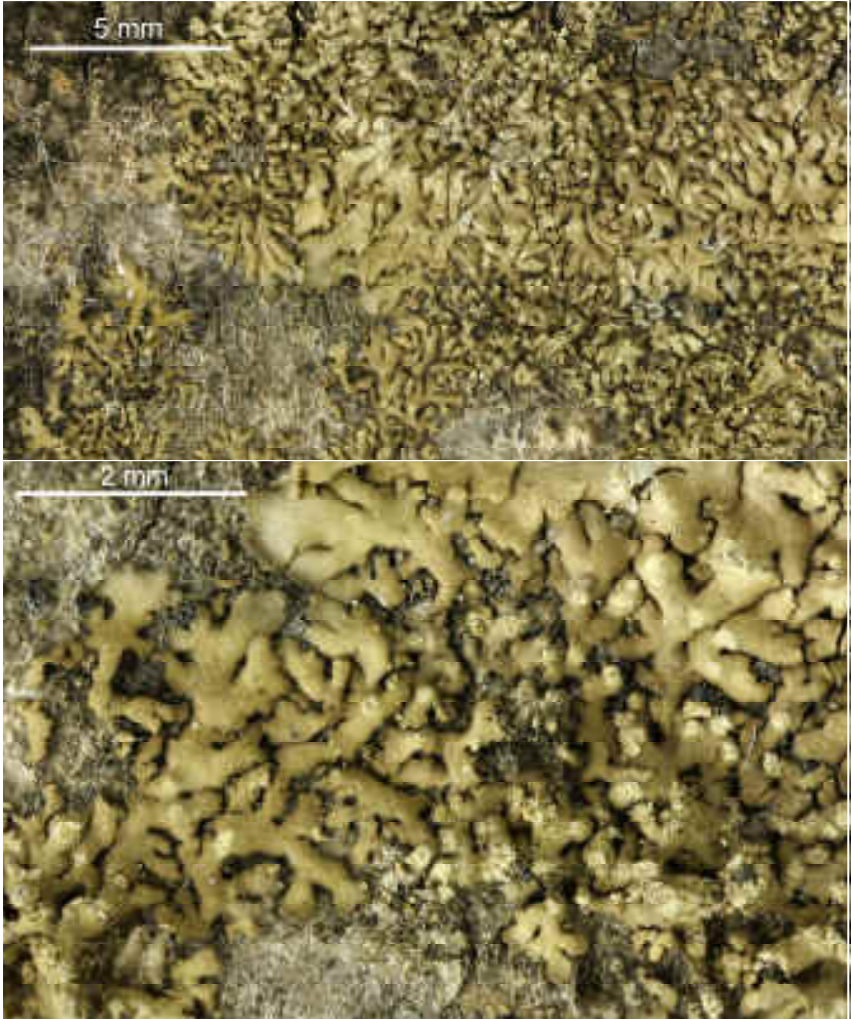
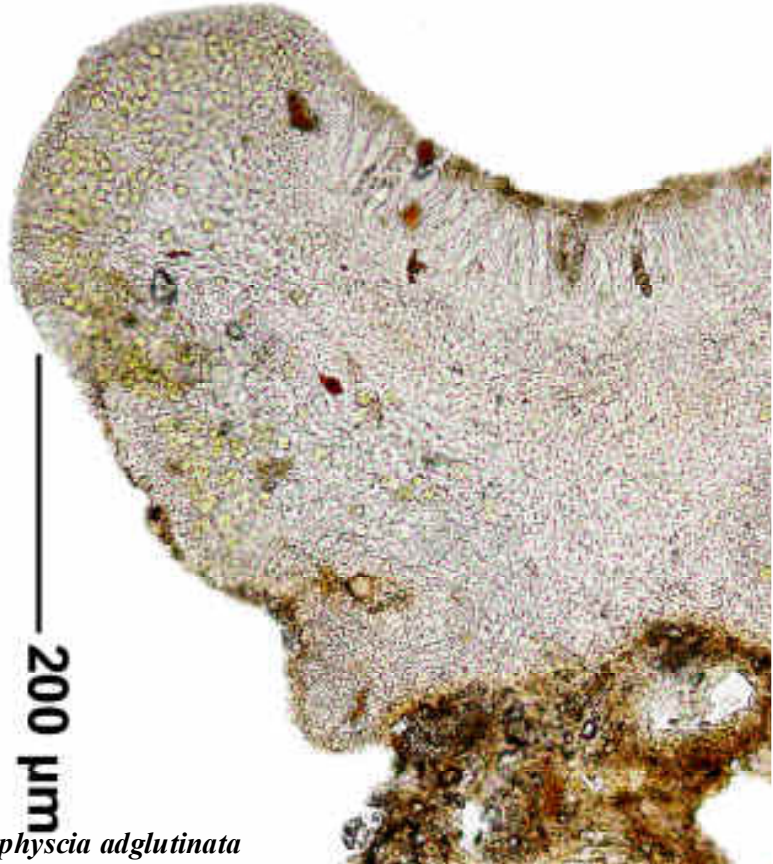


Hyperphyscia adglutinata (Flörke) H.Mayrhofer & Poelt

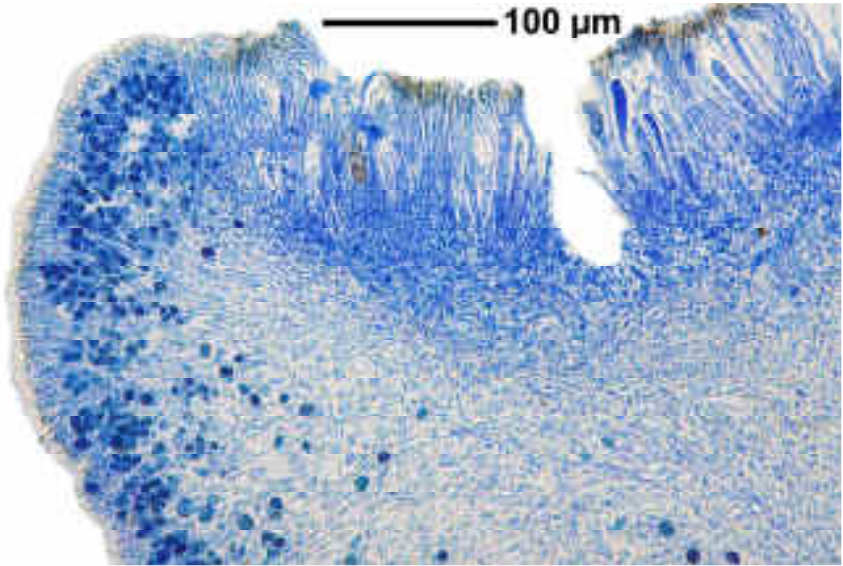
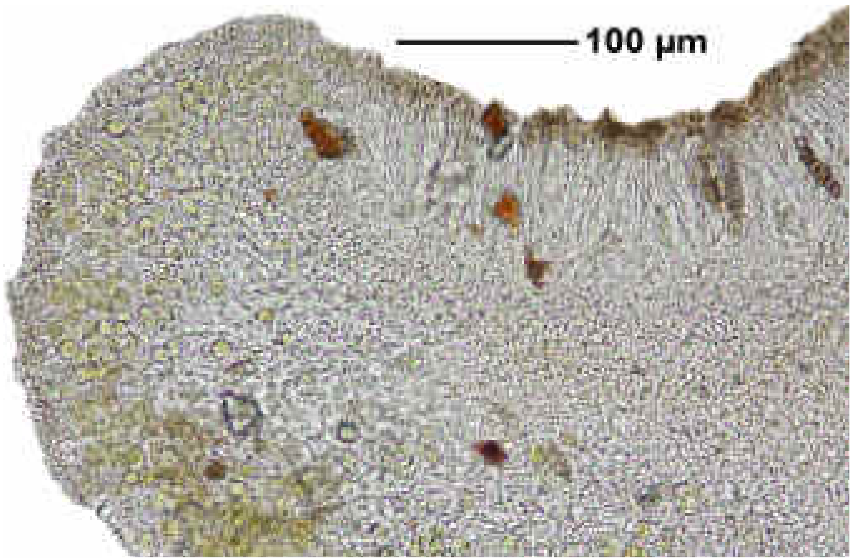
Thallus grey to brown, strongly appressed, microfoliose to squamulose or nearly crustose. Lobes up to 0.5 mm wide, spot-like soresiate. Upper surface paraplectenchymatic, lower surface prosoplectenchymatic, with a few thick rhizines. Apothecia often present, laminal. Paraphyses at the tips brown and branched. Ascospores brown, 1-septate, walls uneven thickened, 12-18 x 6-10 μm . Pycnospores 10-20 x 1 μm . Chemistry: nil (TLC)

[9547], Thailand, Tempelanlage von Sukhothai. 17°01.019' N, 99°42.273 E, 78 m. Leg. Schumm 29.03.2002, det. Aptroot 2009.

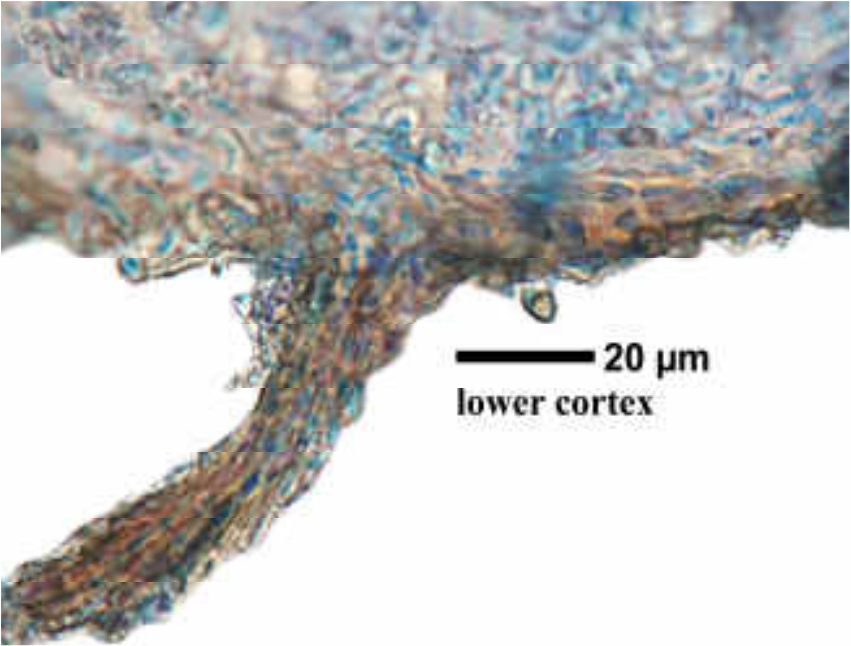
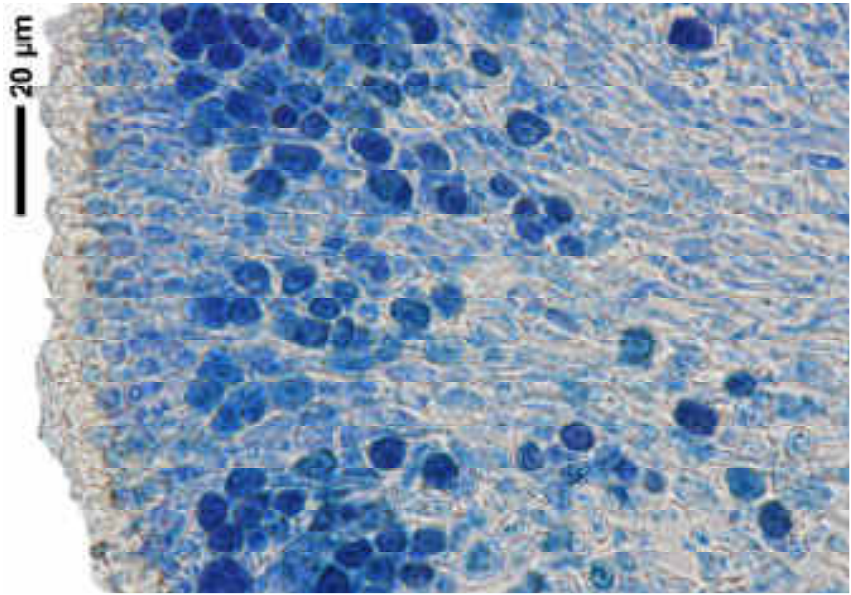




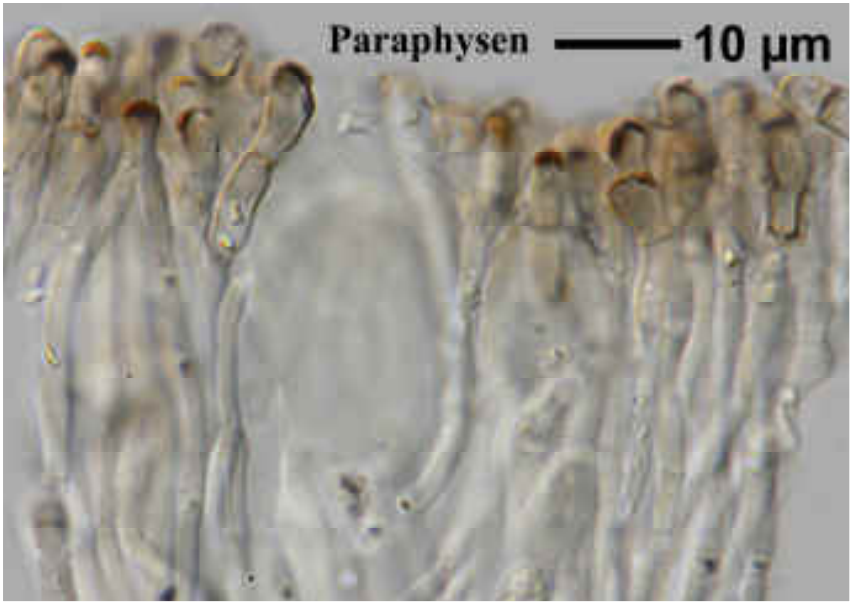
Hyperphyscia adglutinata



Hyperphyscia adglutinata



Hyperphyscia adglutinata



Hyperphyscia adglutinata