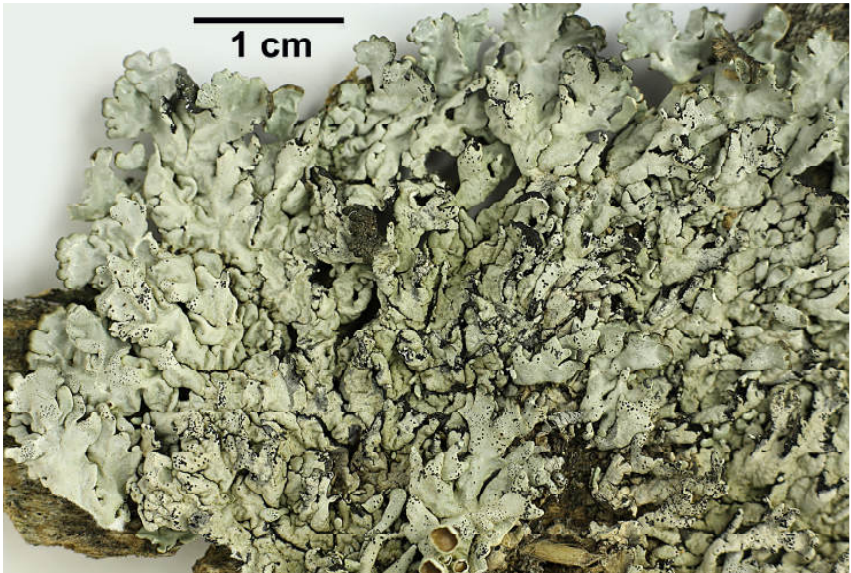
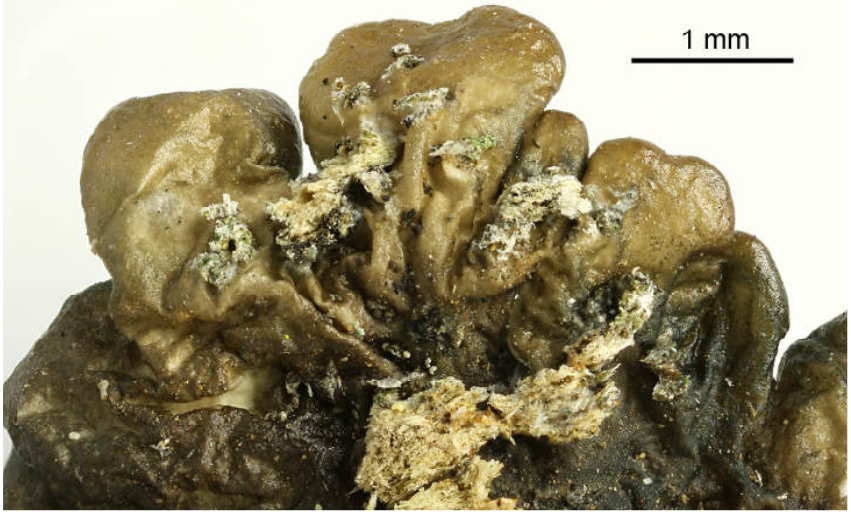
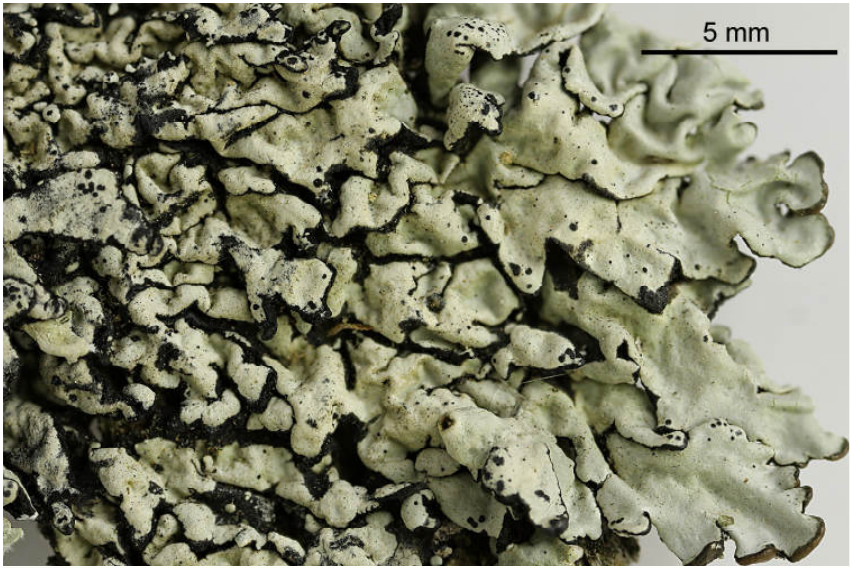


*Hypogymnia billardieri* (Mont.) Filson

Thallus without soredia. Medulla mostly solid. Lobes short and irregularly devided, mainly contiguous, with extensive lateral contacts. Chemistry: cortex K+ yellow, C-, KC-, P+ yelloish; medulla K+ redish, C yellow, KC+ red, P-; atranorin, physodic acid, oxyphysodic acid. Lit.: Flora of Australia 54: 204

[16027], Australien, Canberra, Black Mountains Reserve, corticolous, 35.27591° S, 149.09386° E, 760 m. Leg. Elix, Schumm & Stocker 07.11.2009, det. J.A. Elix





*Hypogymnia billardieri*