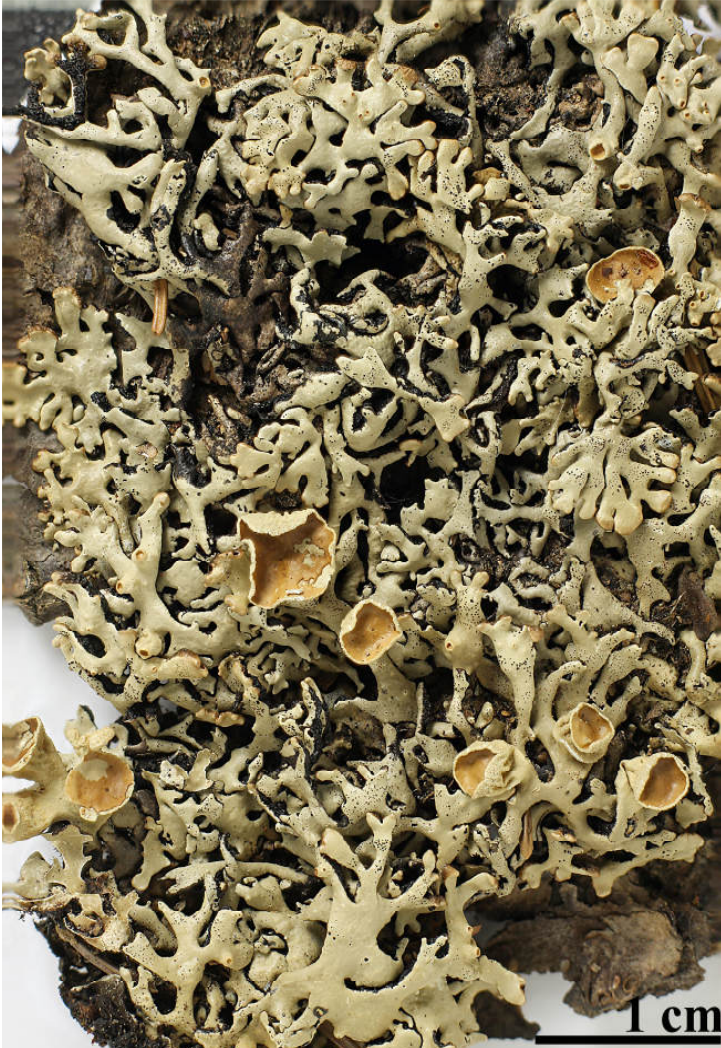
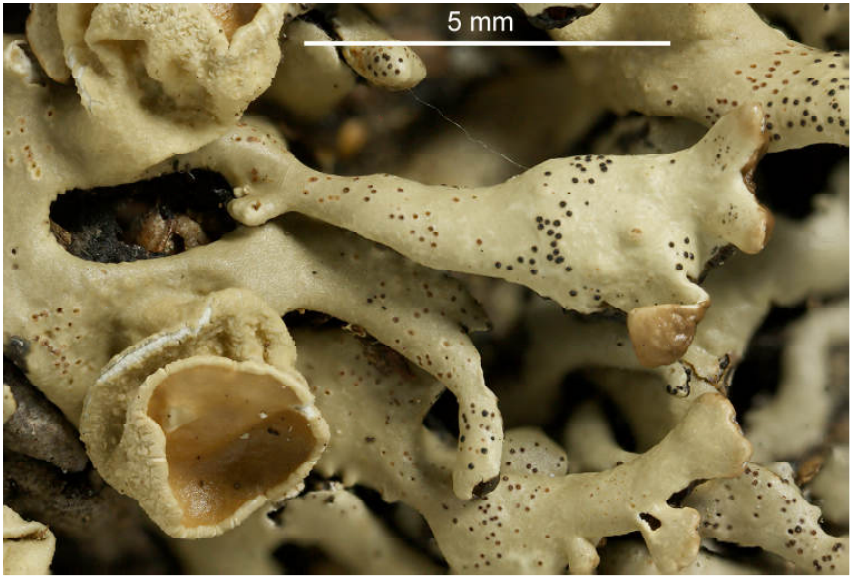


*Hypogymnia krogiae* Ohlsson

Thallus grey, 3-8 cm across. Lobes 0.4-1.5 mm wide, flattened against the substrate with upturned tips. Isidia and soredia absent. Medullary ceiling white to dark brown, often mottled. Chemistry: medulla K-, C-, KC+ pink, P+ red; protocetraric acid, pycnodic acid, physodalic acid. Corticolous, North America.

[8768], USA, Maine, Washington County, Steuben, Eagle Hill, Humboldt Research Institut, Conifer-Maple-Forest, 44°27.588' N, 67°56.004' W, 87 m. Leg. Schumm 20.08.2001, det. Schumm 2001.





*Hypogymnia krogiae*