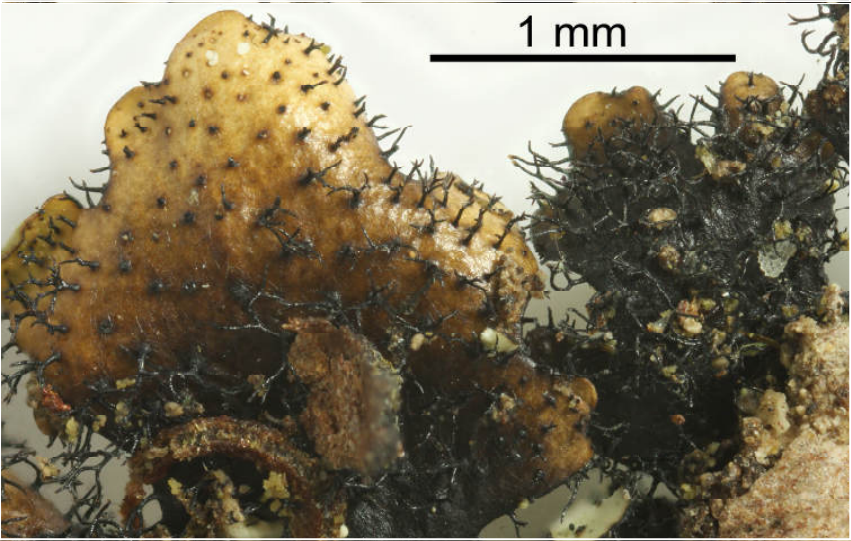
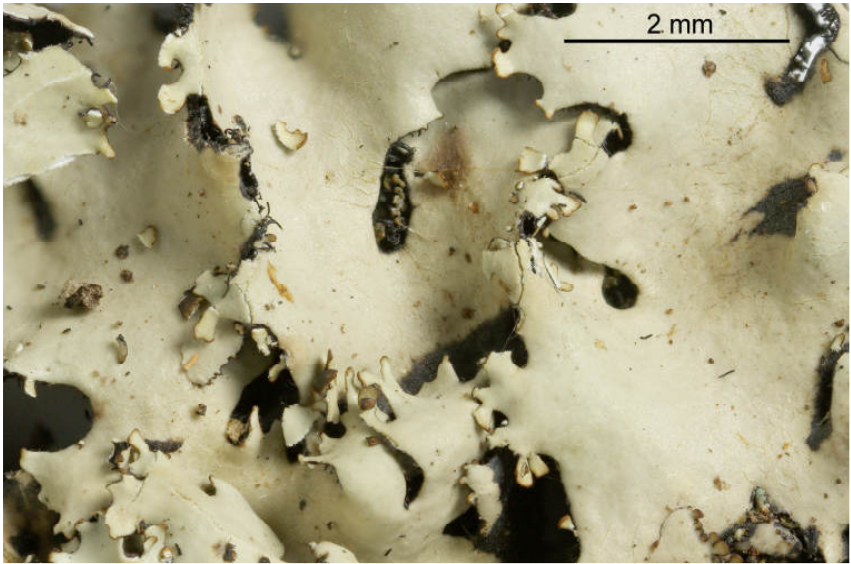


*Hypotrachyna neodigitata* Kurok. & K.H.Moon

Thallus corticolous, mineral grey, more or less glossy, emaculate, 2.5-5 cm wide. Lobes sublinear, subirregularly divided, 1-3 mm wide, becoming densely lobulate along the margin and surface. Soredia and Isidia absent. Medulla white. Lower surface densely rhizinate. Chemistry: atranorin (minor), barbatic acid (major), 4-O-demethylbarbatic acid (minor), norobtusatic acid (trace). Lit. Kurokawa & Moon 2000.

[6271], Philippinen, Mindanao, Provinz Bukidnon, westlich Malabalay, tropischer Regenwald am Mt. Kitanglad ab Zwischen-Campsite , 08°09.637' N, 124°55.871' E, 1870-2800 m. Leg. Schumm 19.08.1999, det. J.A. Elix 07.07.2000.





*Hypotrachyna neodigitata*