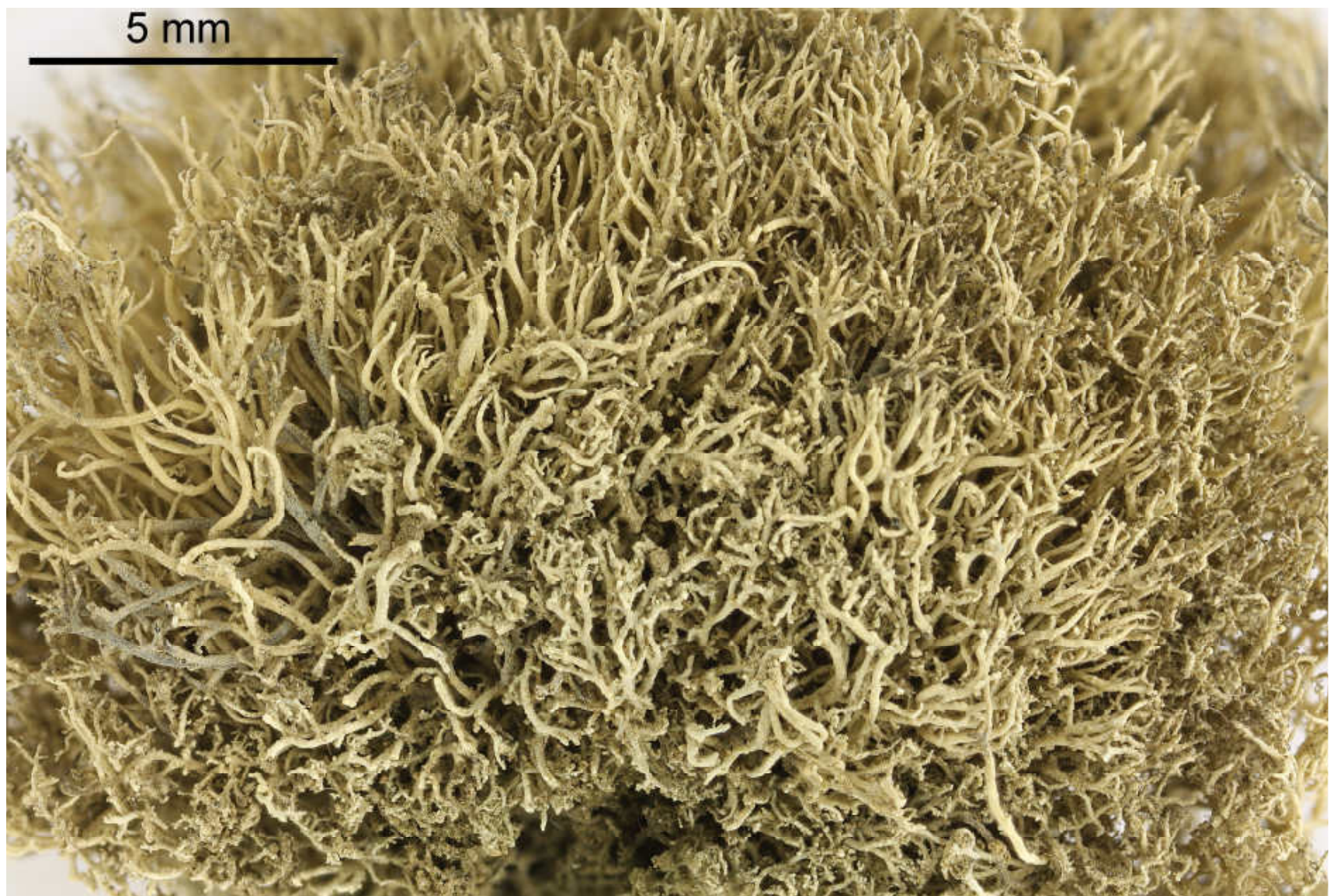
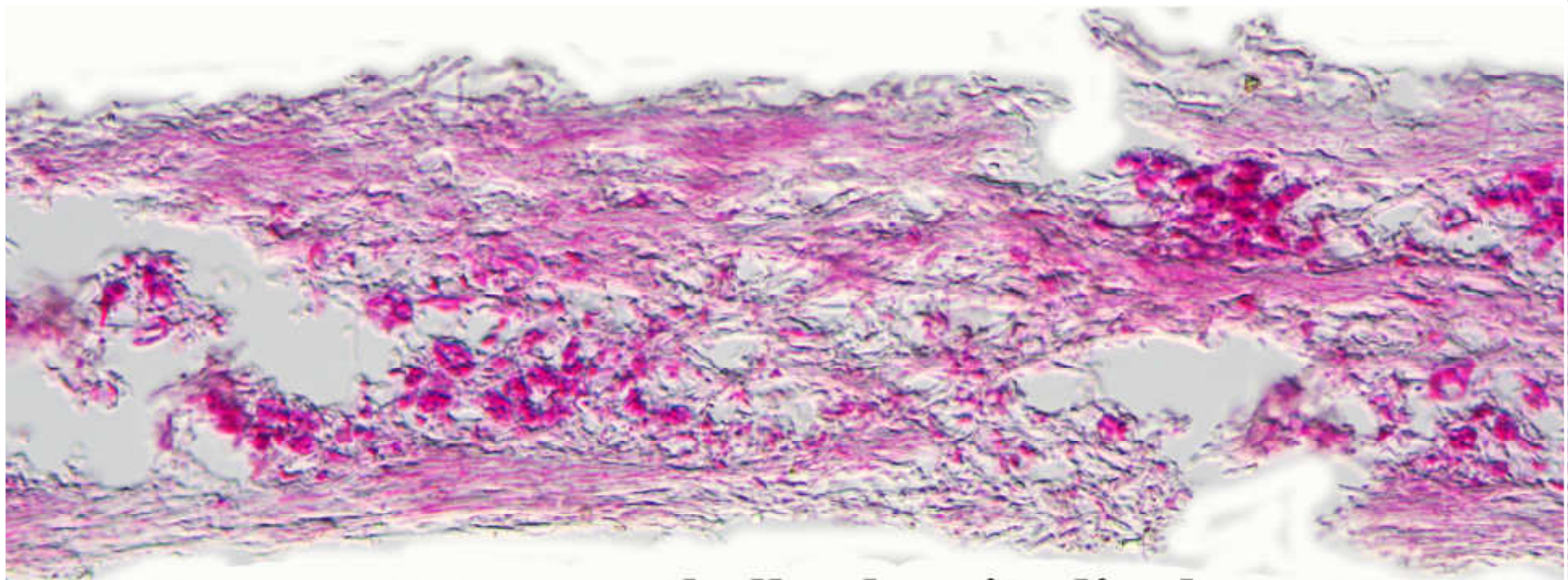


Ingaderia pulcherrima Darb. (1897)

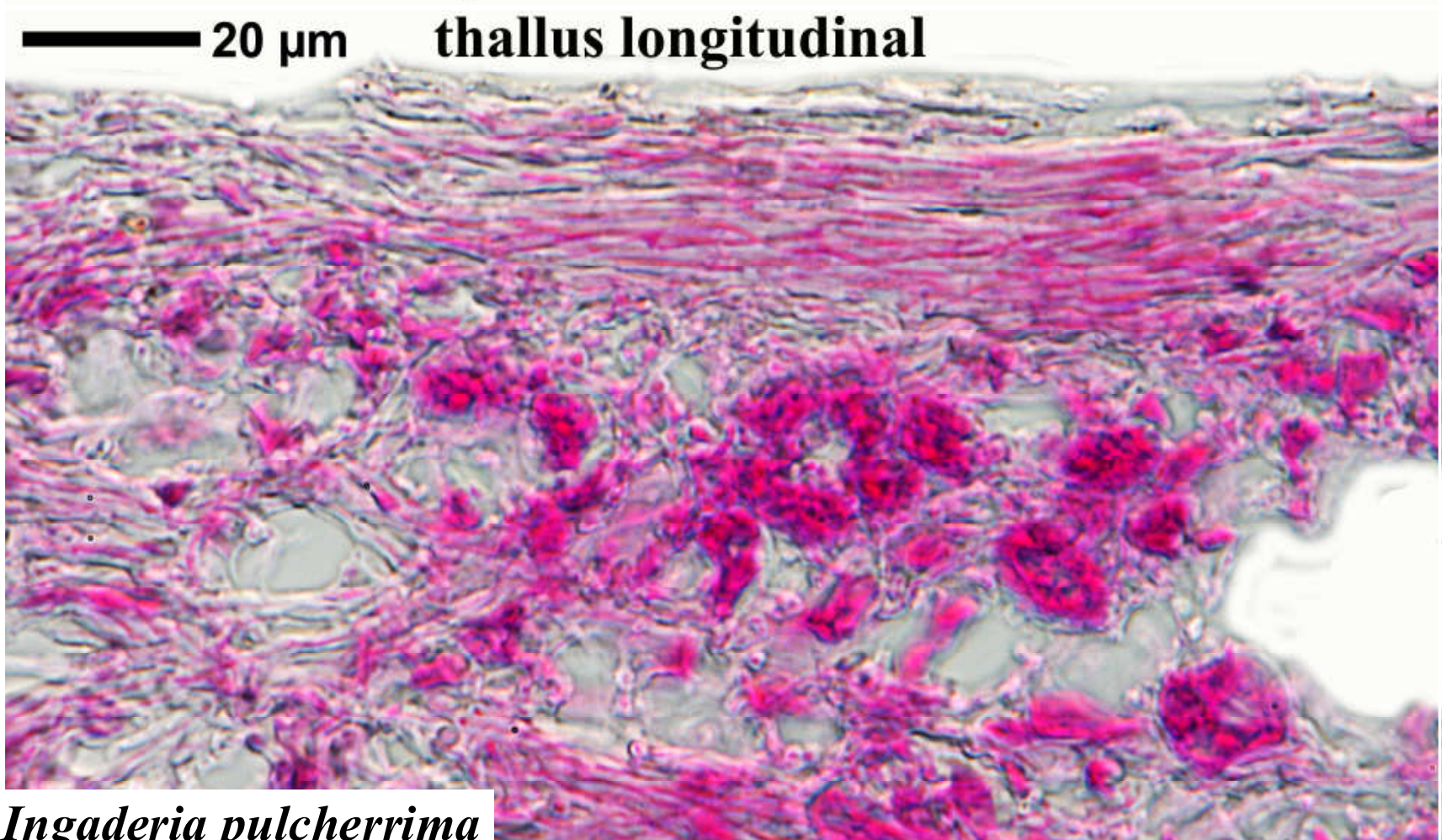
Thallus saxicolous, brown, not sorediate, thallus soft but nevertheless very fragile, cylindrical, often anastomosing, tips not flattened, surface rough, holdfast internally white to brown. Cortex distinctly periclinal plectenchmateous, not strongly differentiated from the medulla. Apothecia rare, round. Cortex C + red, K –, Pd–, medulla C + red, major substances erythrin, lecanoric. – Chile.

Chile, Antofagasta, Quebrada de la Chimba, im mittleren Stammbereich von *Eulychnia iquiquensis* (Schum.) Britt et Rose, in südwestlicher nebeloffener Hanglage, 450 m, NW-SW, pH 5.5, gesellig. Leg. et det. G. Follmann Aug. 1991. Lichenes Exsiccata Selecti Ab Instituto Botanico Universitatis Coloniensis Editi Nr. 403. [9450]



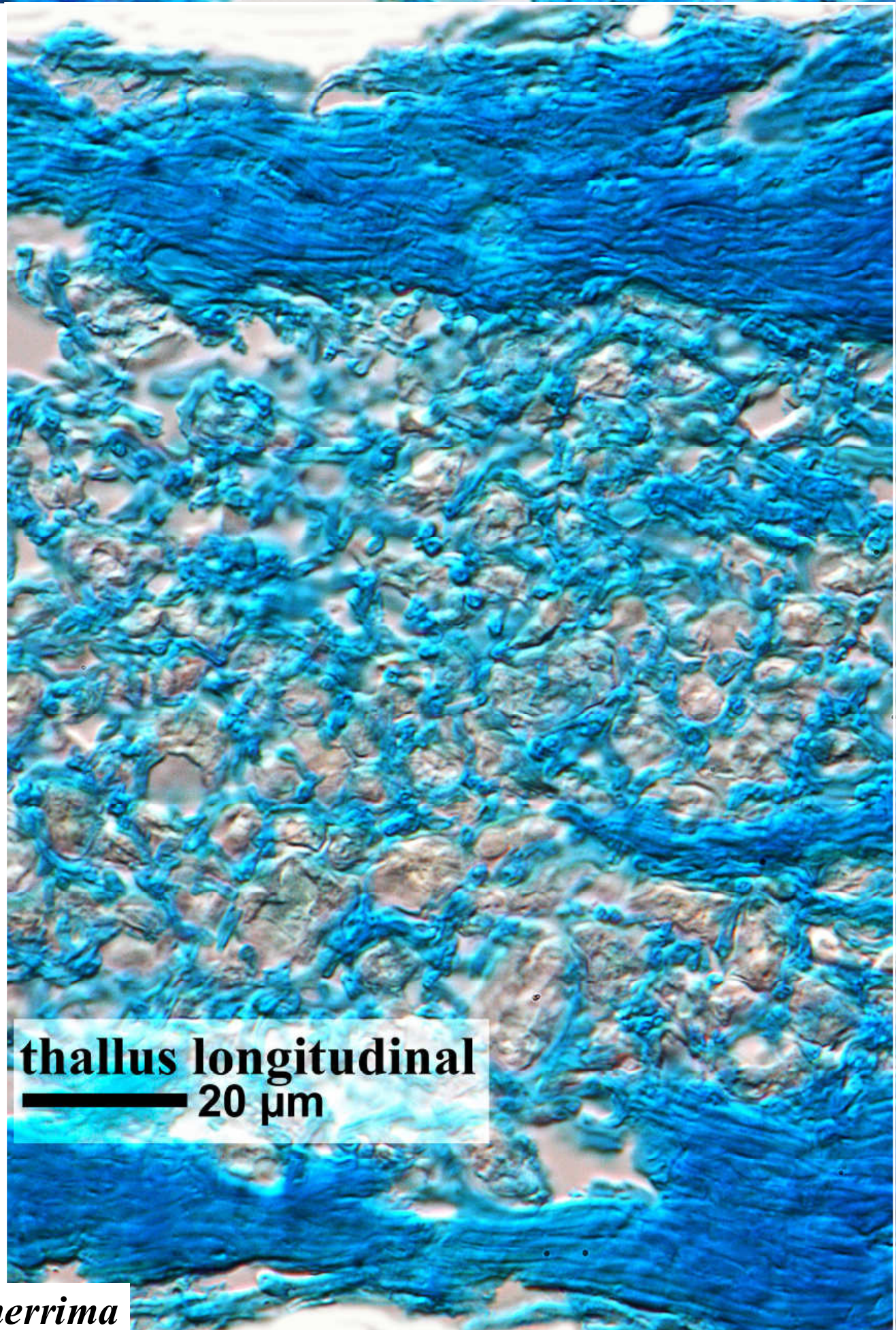
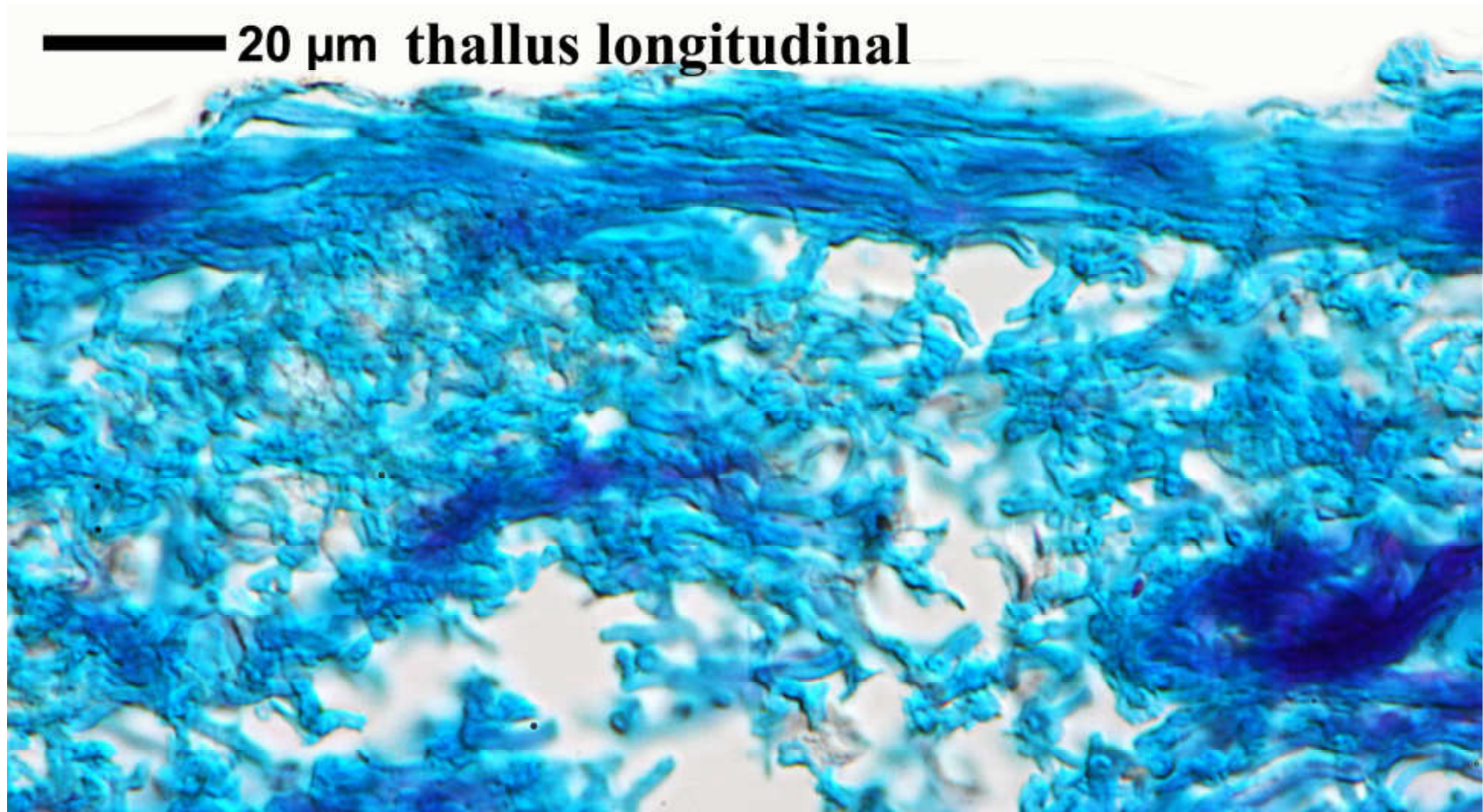


100 μ m thallus longitudinal



20 μ m thallus longitudinal

Ingaderia pulcherrima



Ingaderia pulcherrima