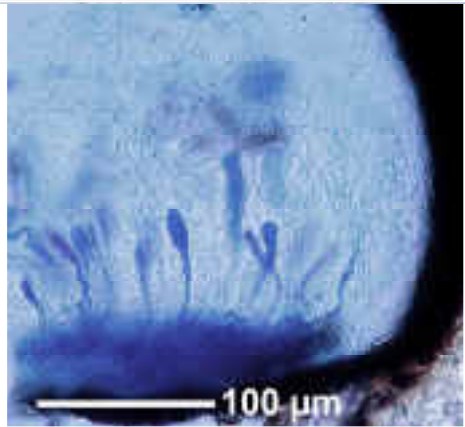
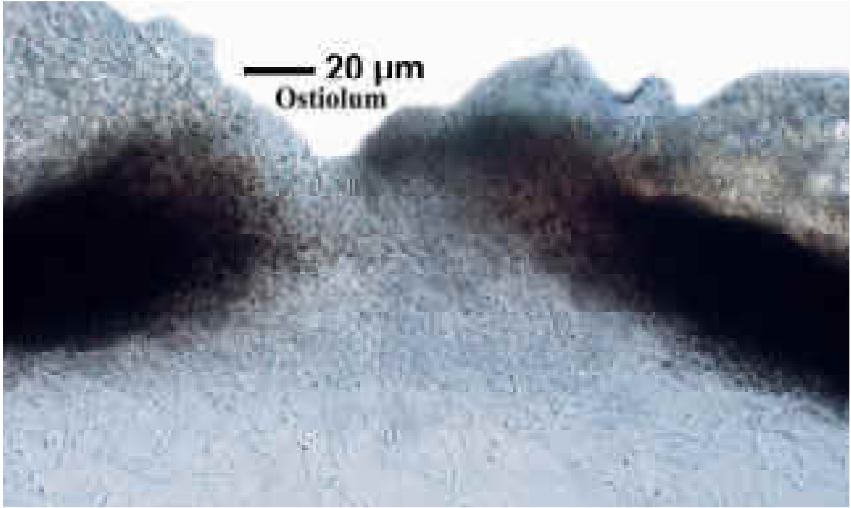
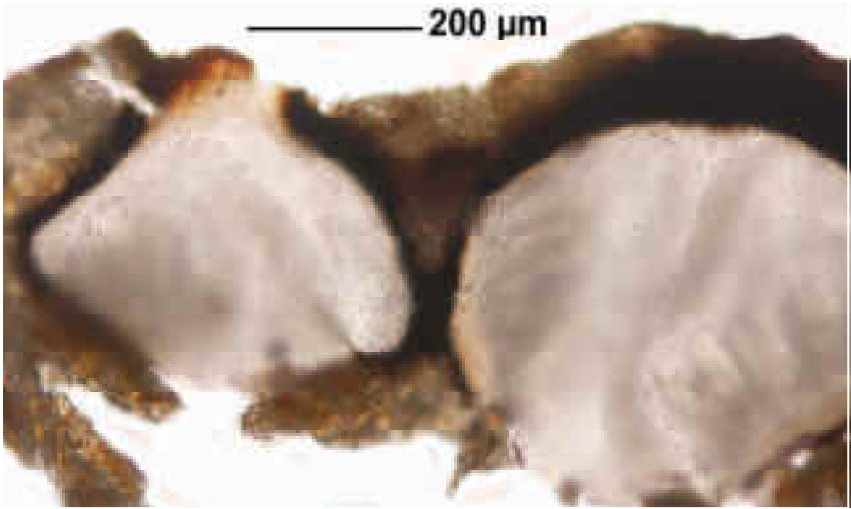


Laurera subbenguelensis Upreti & A.Singh

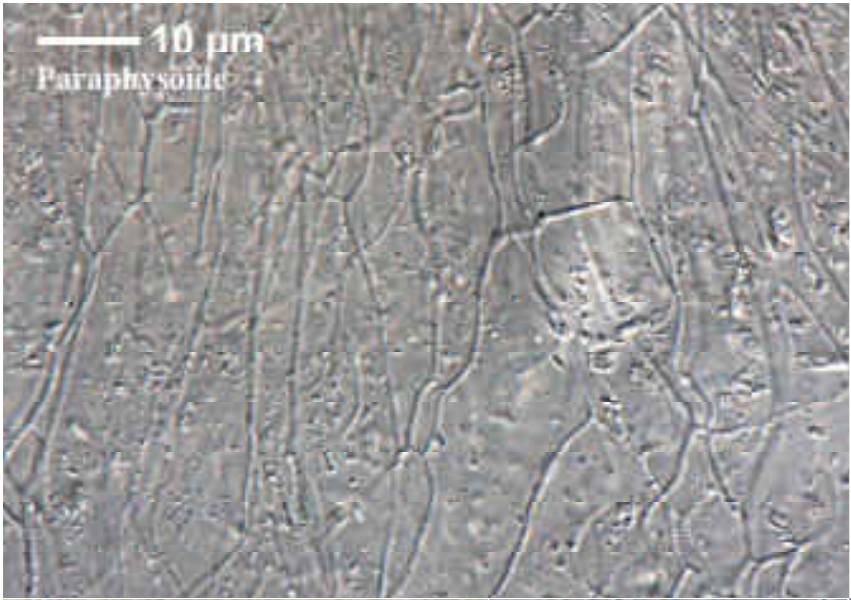
Hamathecium very inspersed. Paraphysoids branched, anastomosing. Asci J red-brown. Ascospores hyaline, size variable, first 2-cellular, then transversely 13-14-septate with thick halo, finally muriform with c. 3 longitudinal septa at each segment, 28-71 x 6-17 μm . Pycnospores bacillar, 5 x 0.5 μm . Yellow pigment K+ blood-red.

[9566], Thailand, Elefantenarbeitslager bei Chiang Mai. 19°14.859' N, 98°58.137' E, 330 m. Leg. Schumm 01.04.2002, det. Aptroot & Schumm 2011.

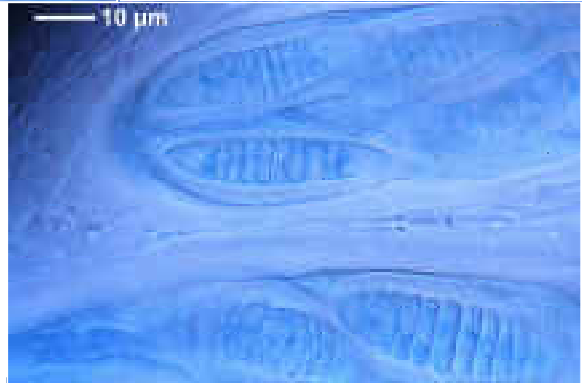
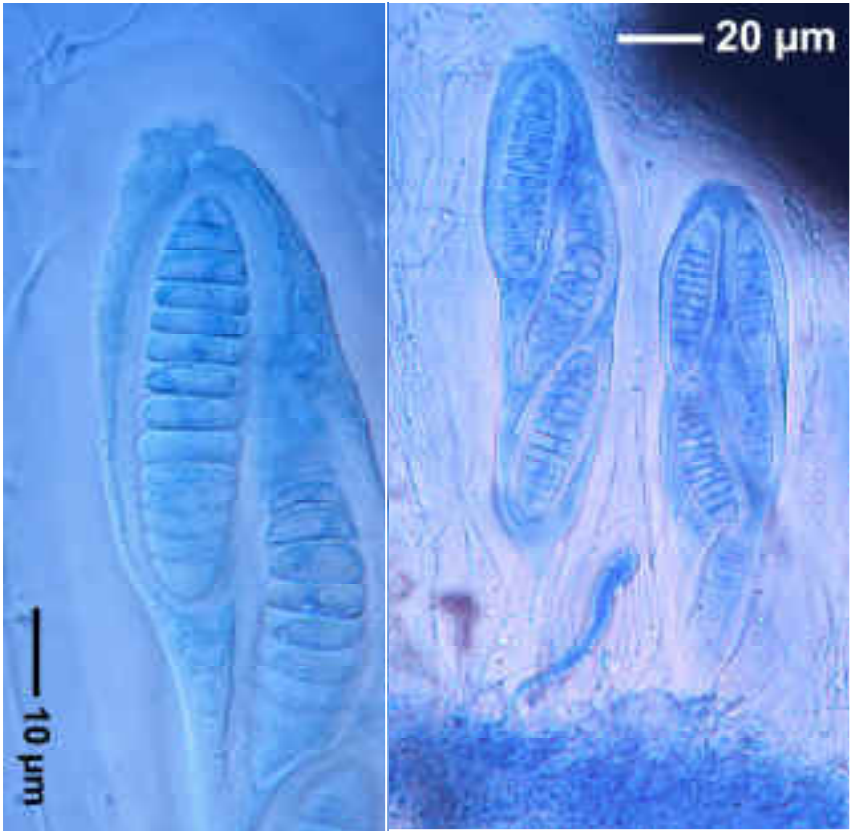




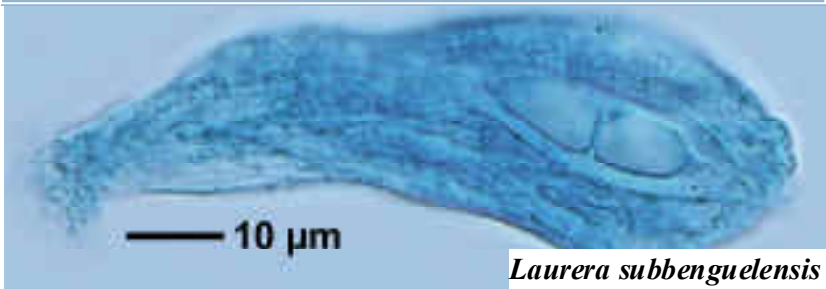
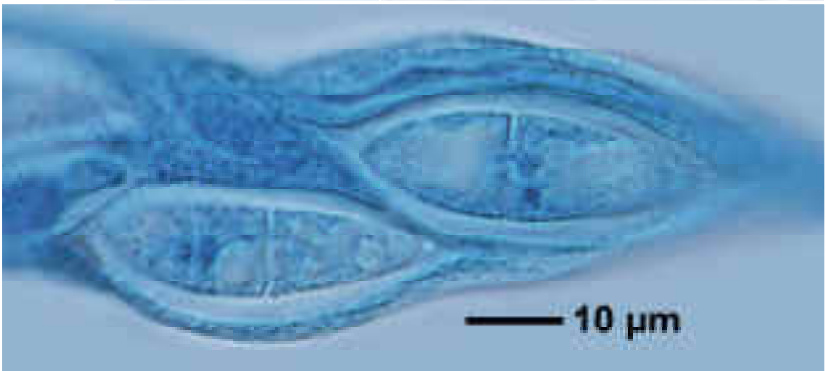
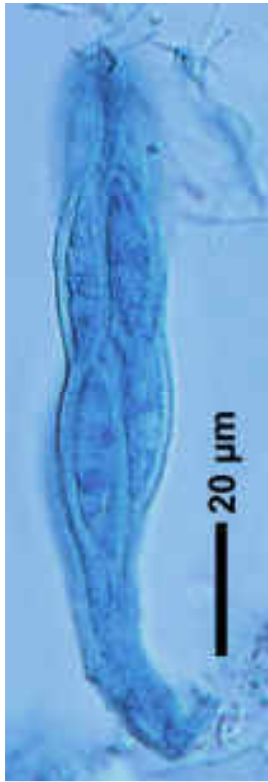
Laurera subbenguelensis



Laurera subbenguelensis



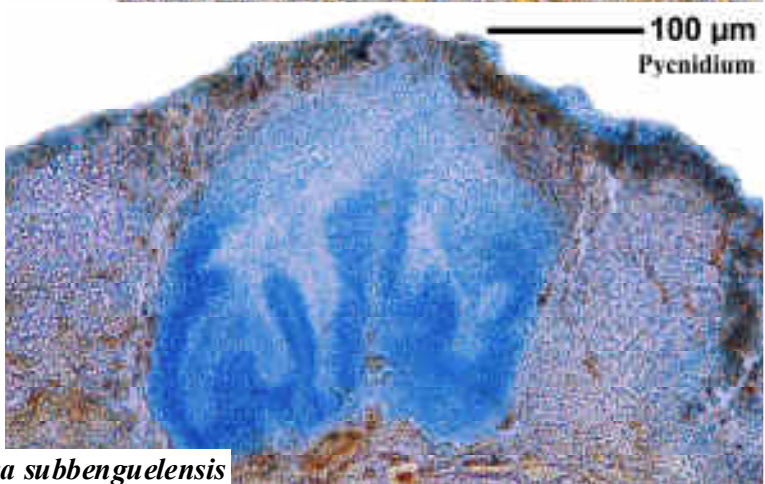
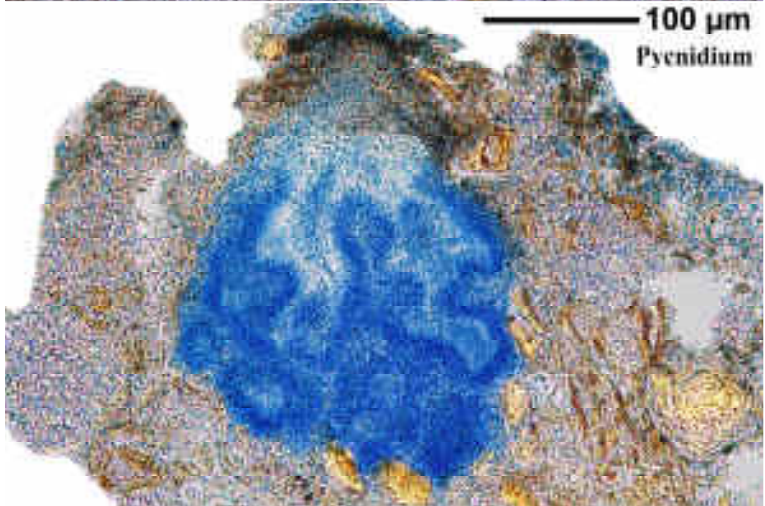
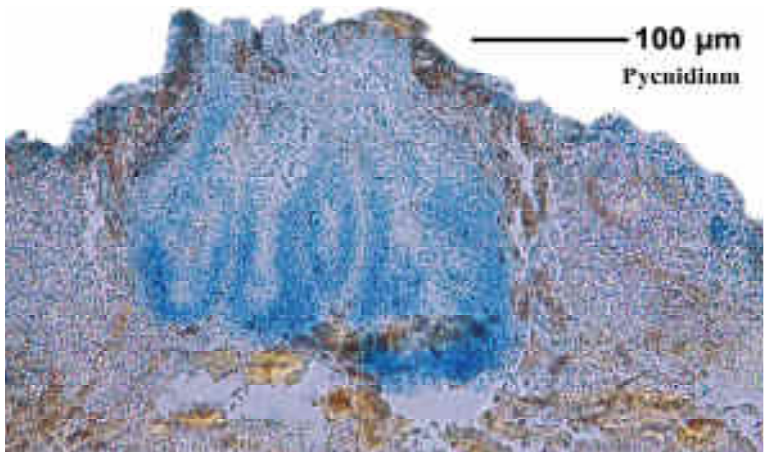
Laurera subbenguelensis



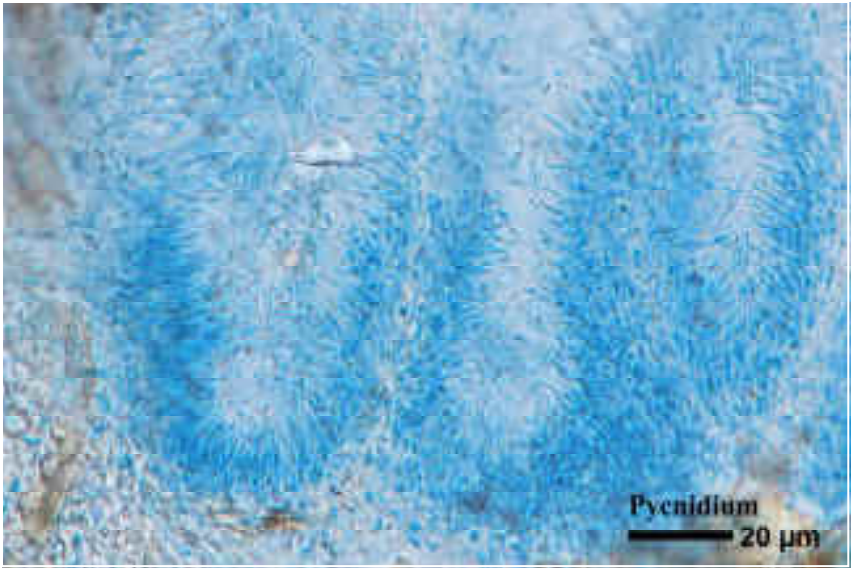
Laurera subbenguensis



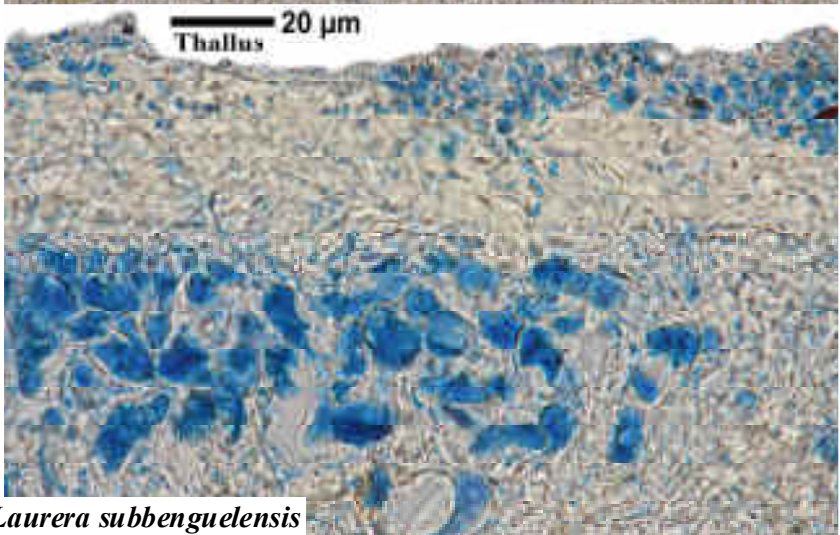
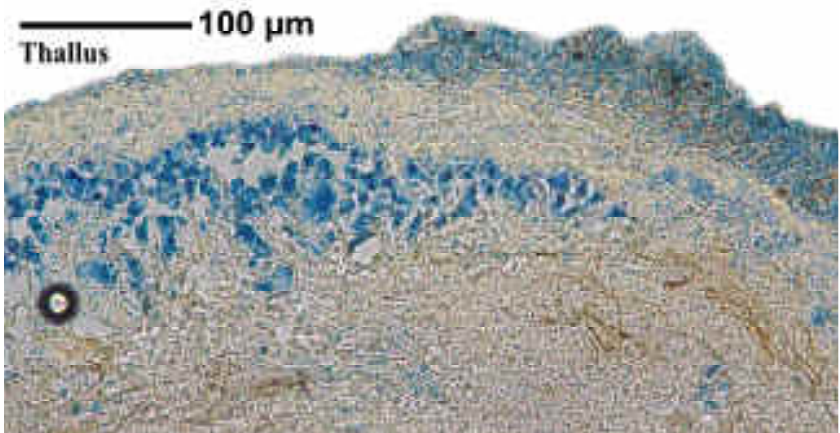
Laurera subbenguelensis



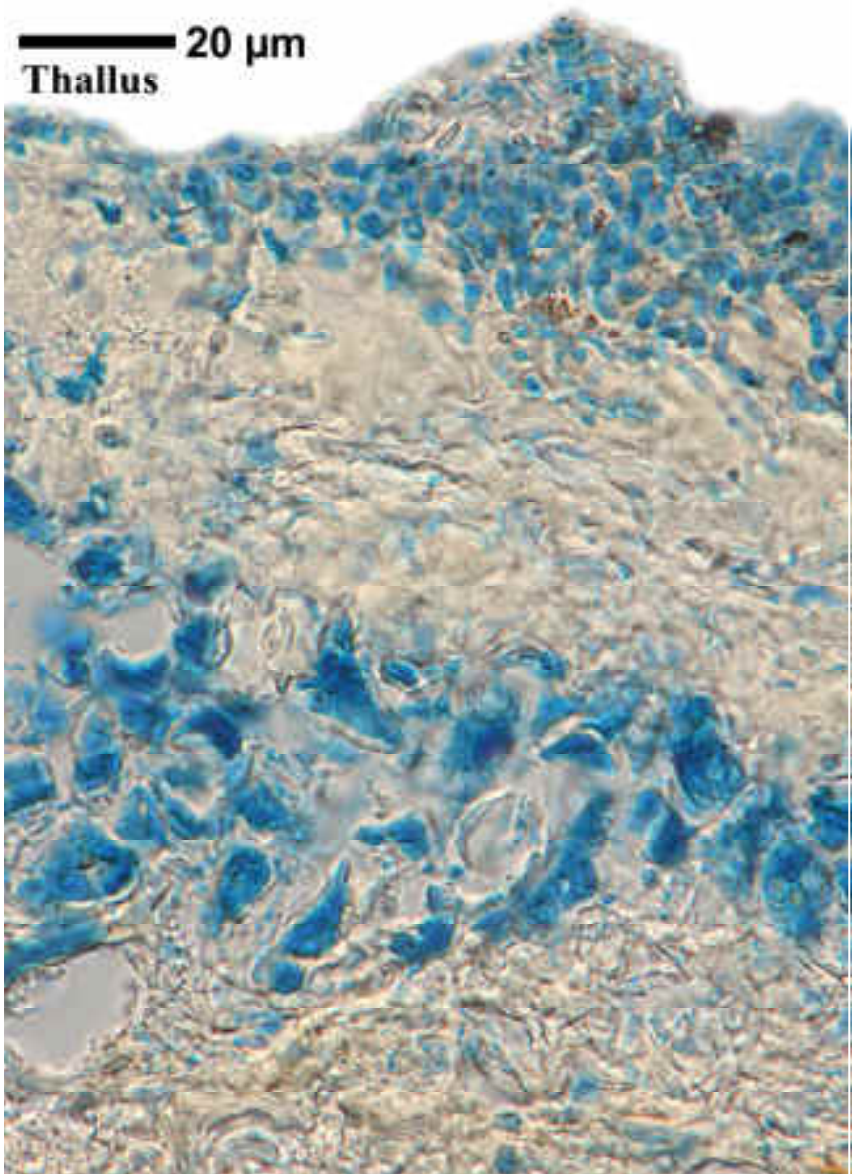
Laurera subbenguelensis



Laurera subbenguelensis



Laurera subbenguelensis



Laurera subbenguelensis