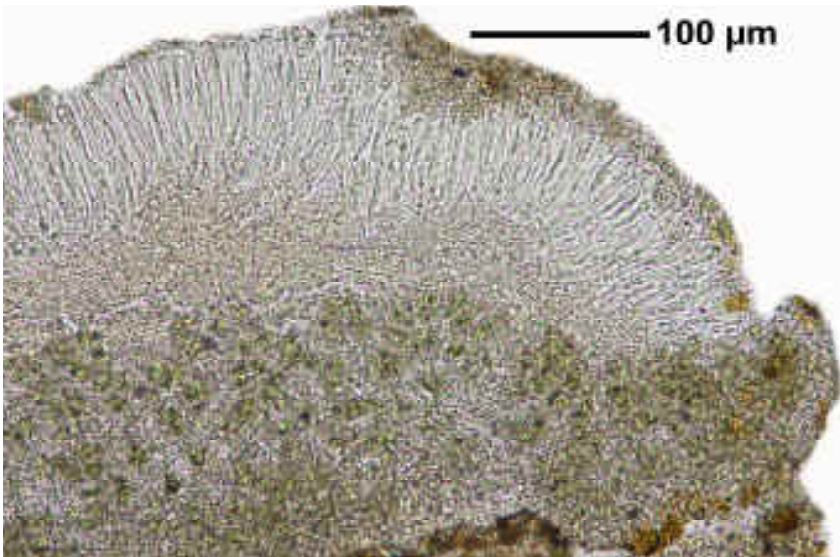
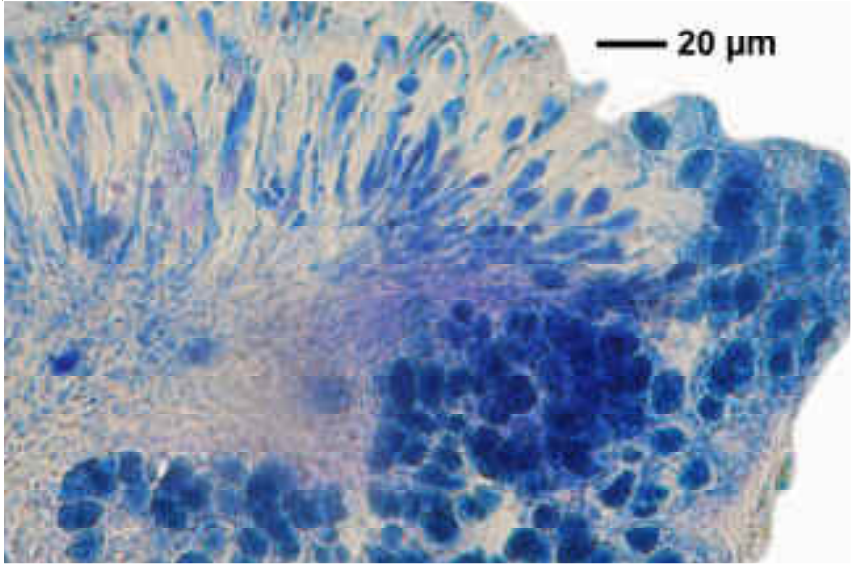
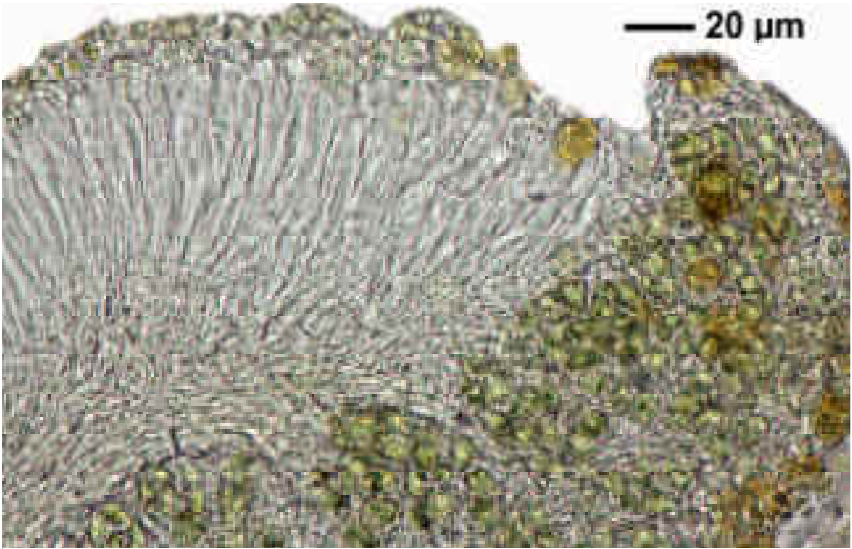


Lecania rabenhorstii (Hepp) Arnold

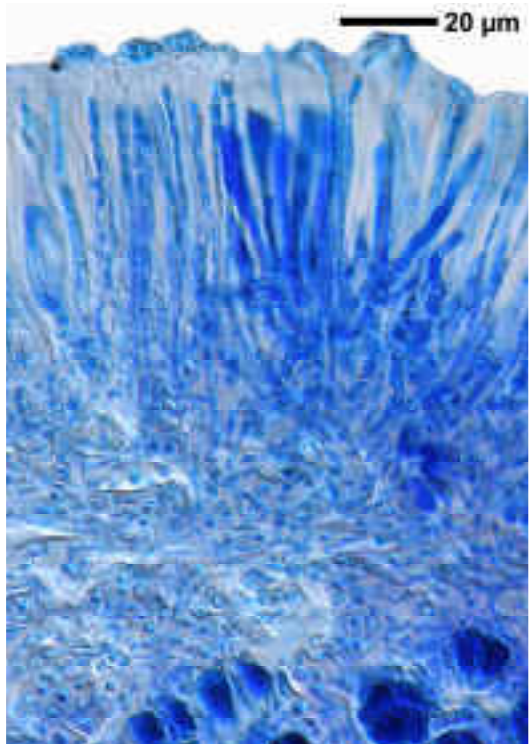
Apothecien mit Algen im Rand. Sporen hyalin, zu 8, 1-septiert, ca. 10-12 x 4-5 μm .

[10750], Germany, Baden-Württemberg, Schwäbische Alb, nahe Steinheim im Wental beim Felsenmeer, an Kalksteinen, ca 620 m. Leg. Schumm 29.09.1970.

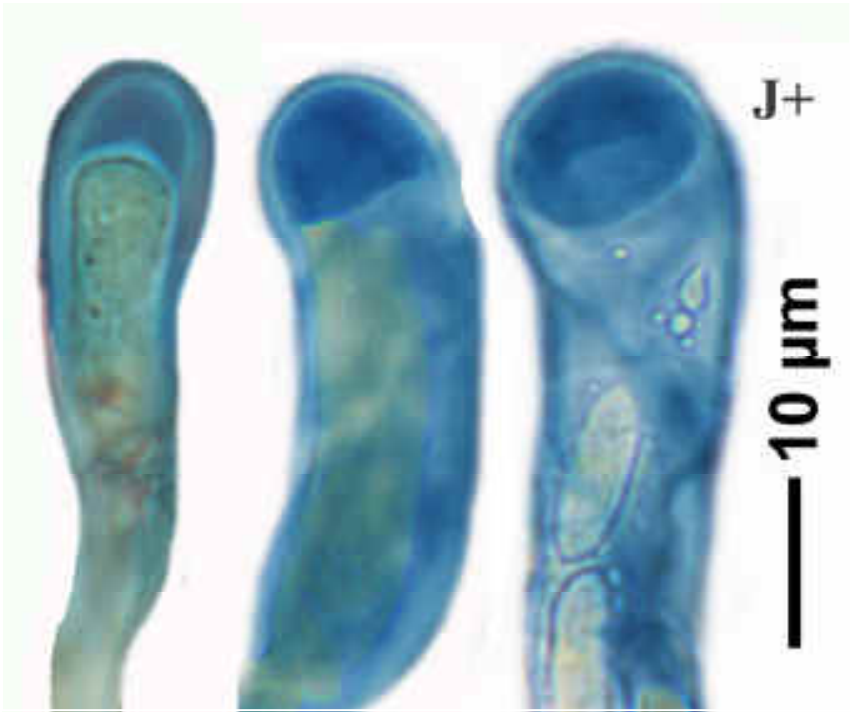




Lecania rabenhorstii



Lecania rabenhorstii



Lecania rabenhorstii