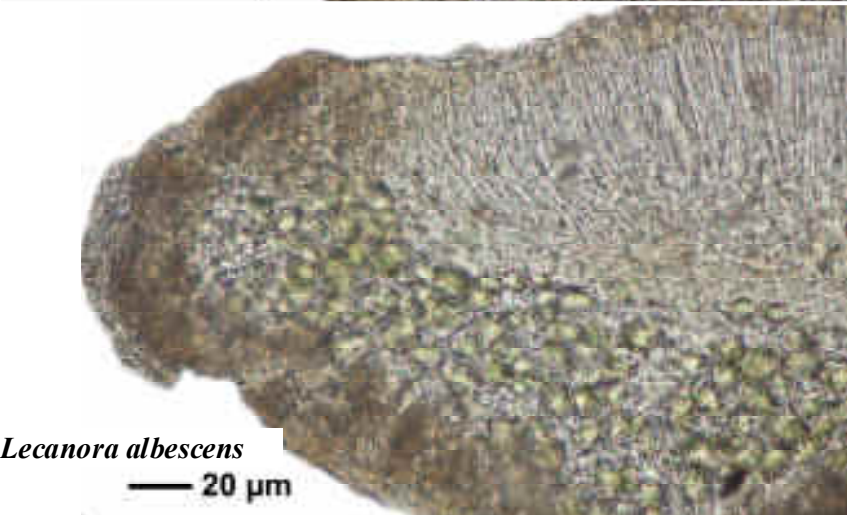
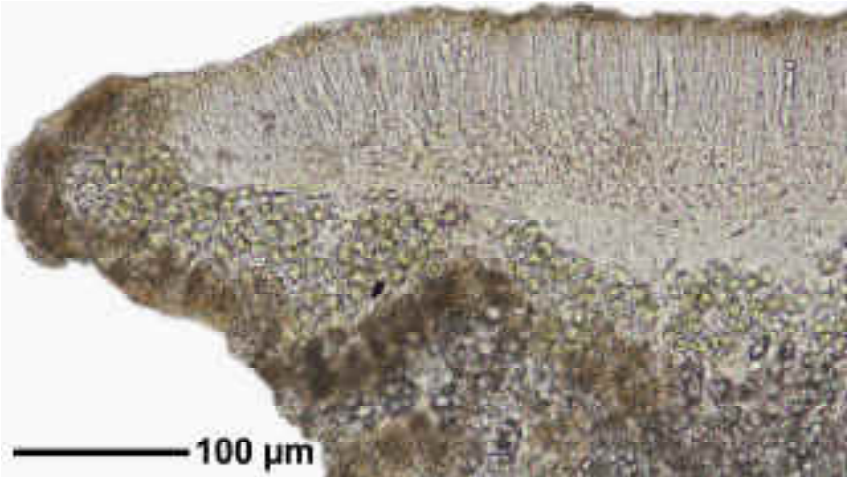
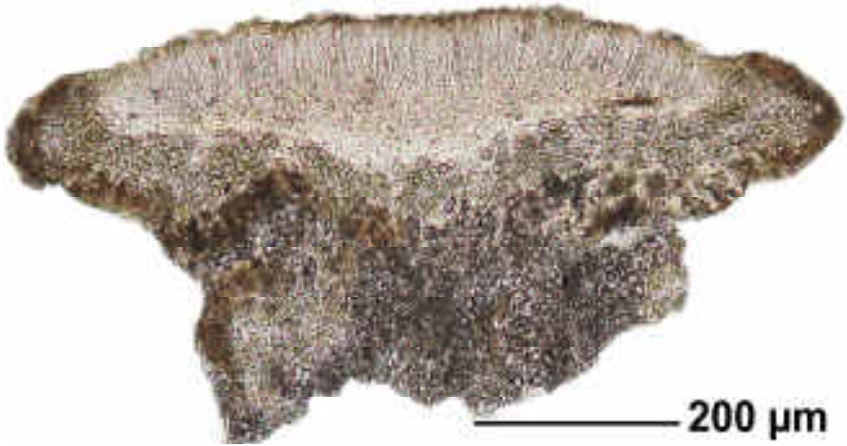


*Lecanora albescens* (Hoffm.) Branth & Rostrup

Thallus weiß bis grauweiß, am Rand manchmal schwach effiguriert. Apothecien im Zentrum oft sehr gedrängt, Scheiben braun, gelbbraun bis olive. Sporen hyalin, 1.zellig, 7-16 x 3-7 µm. Thallus K-, C-, KC-, P-. Scheiben mit 2,7-Dichlorlichexanthon.

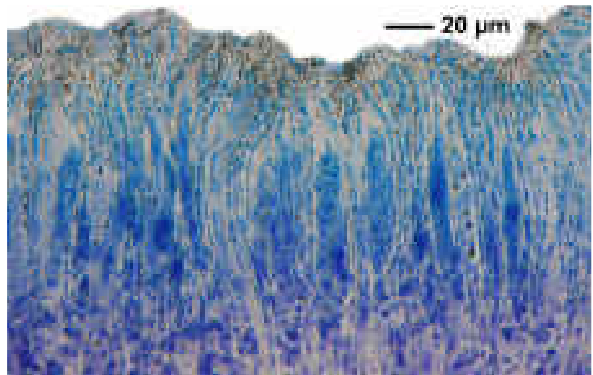
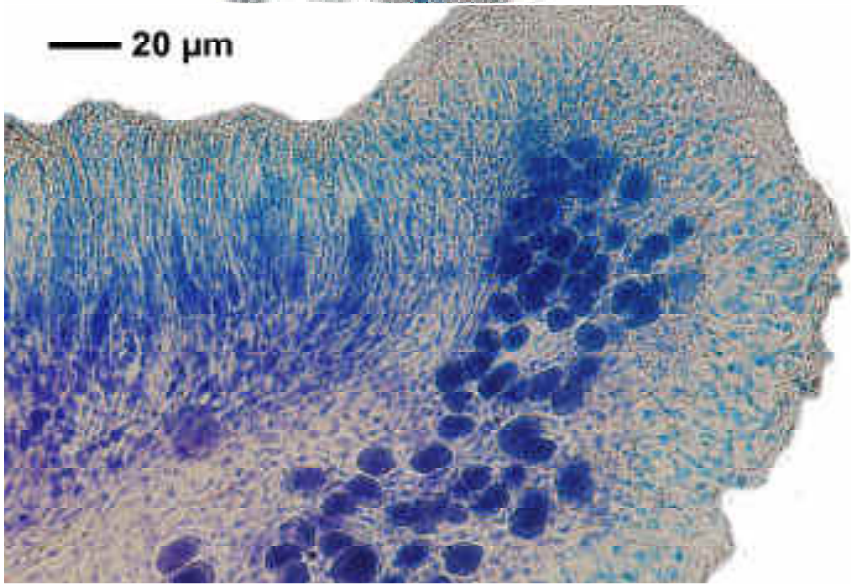
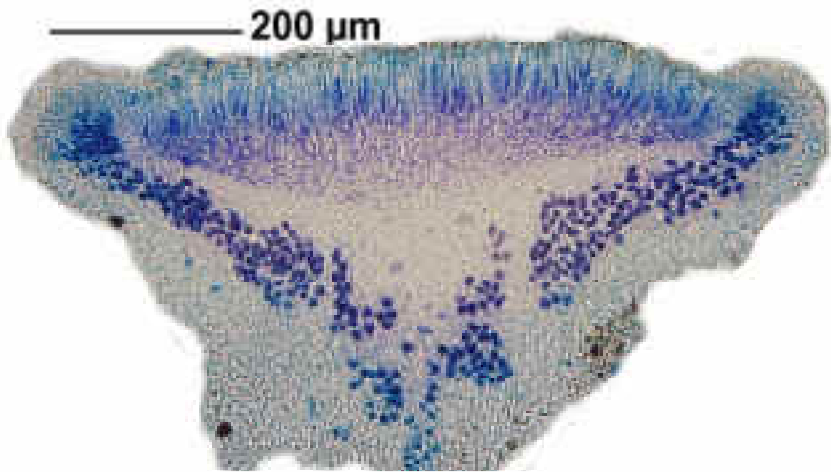
[890], Germany, Baden-Württemberg, Schwäbische Alb, Kreis Heidenheim, westlich von Böhmenkirch, an alten Straßensteinen der Bundesstraße 466, 700 m, leg. et det. Schumm 10.10.1970.



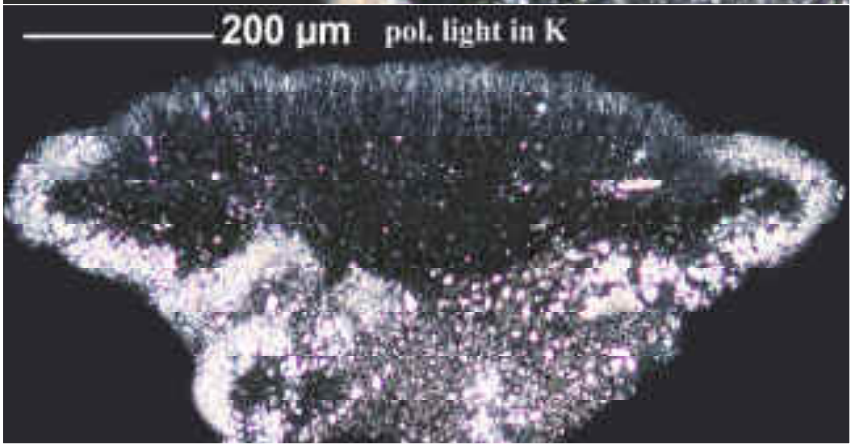
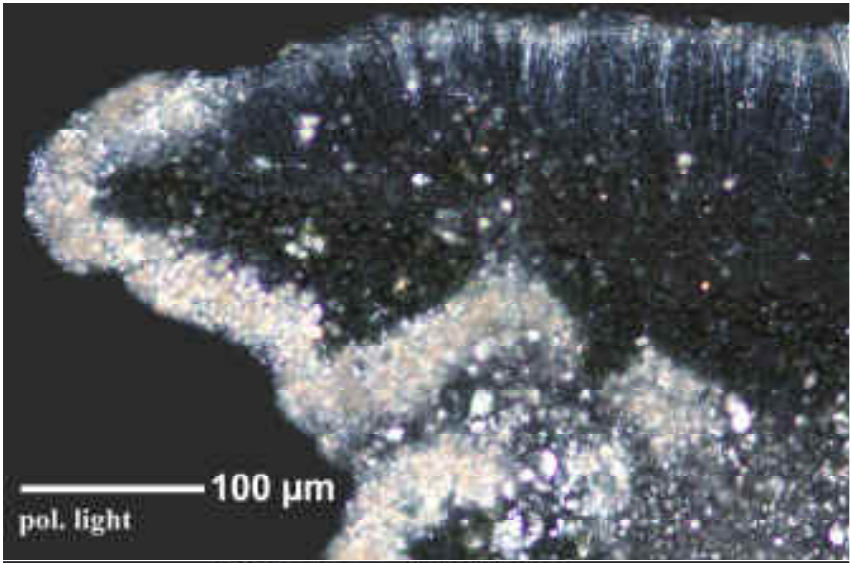


*Lecanora albescens*

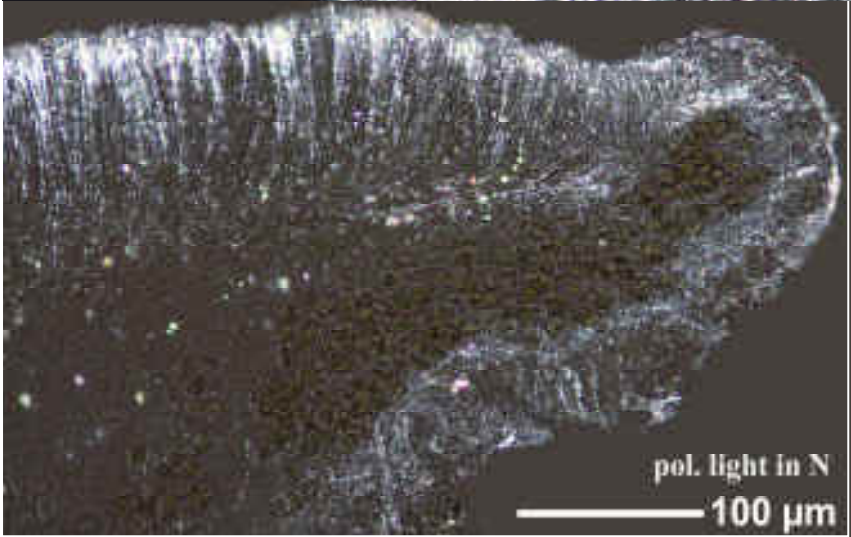
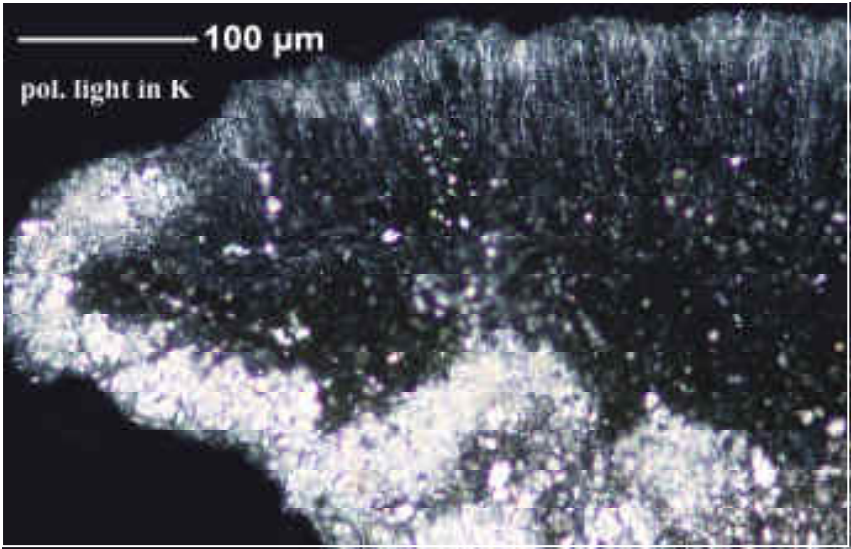
— 20 µm



*Lecanora albescens*



*Lecanora albescens*



*Lecanora albescens*