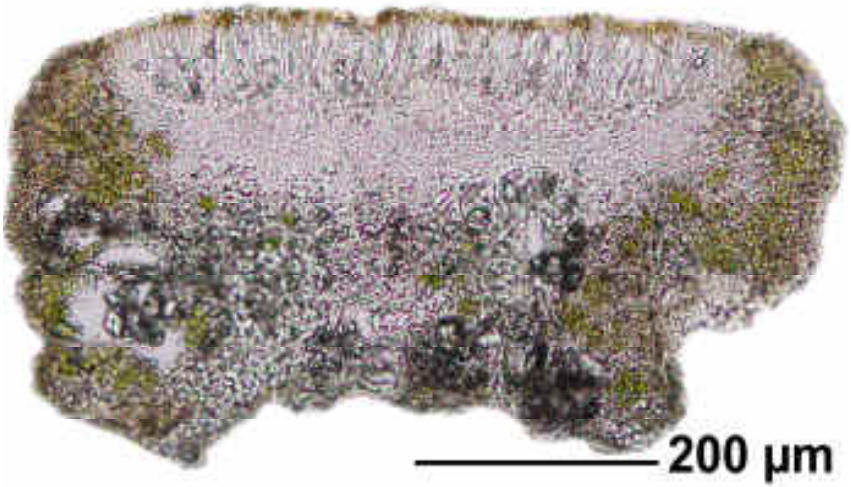
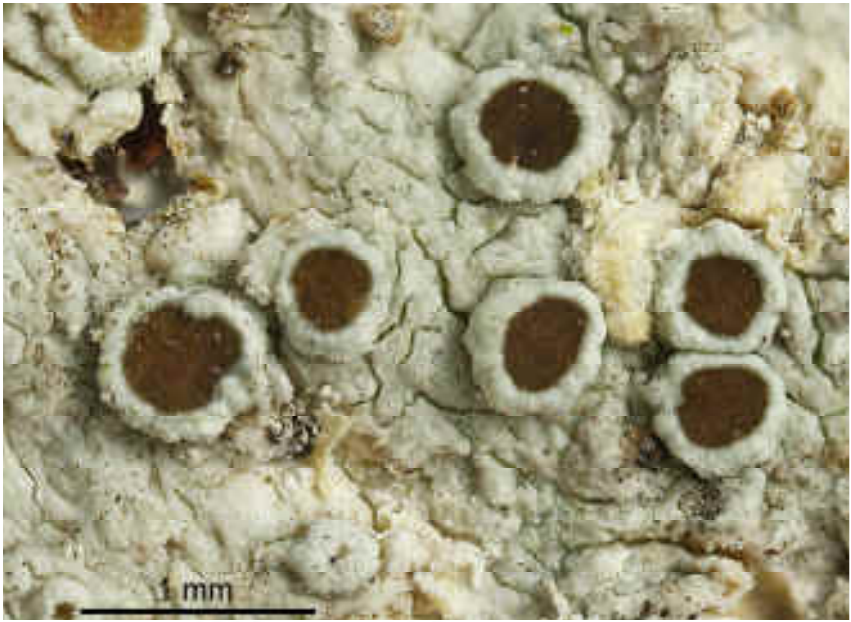


Lecanora argentata (Ach.) Malme

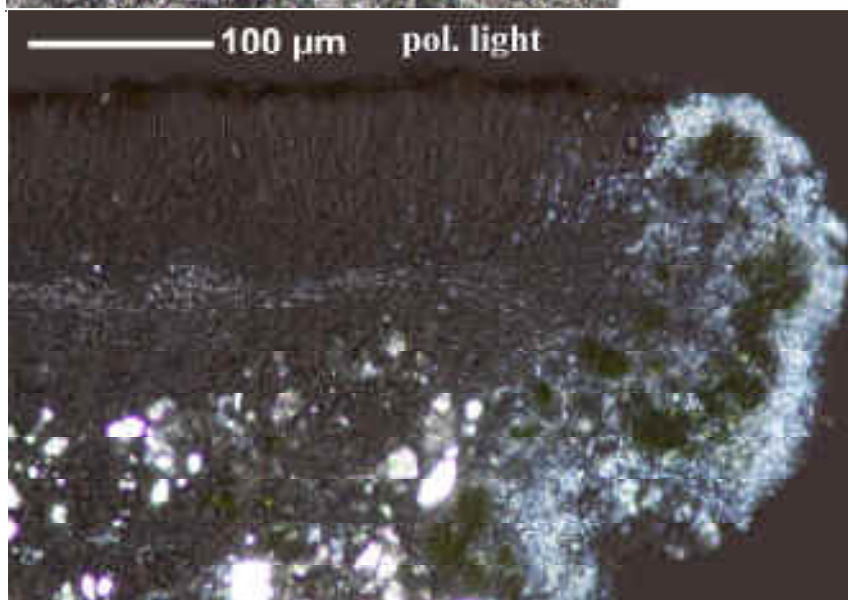
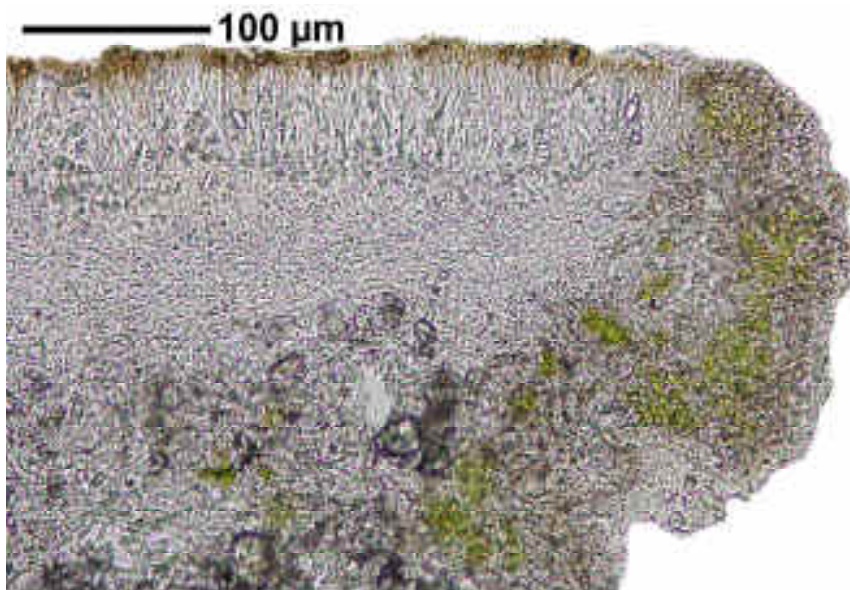
Thallus weiß, dünn, matt. Epithecium ohne Pol+ Körnchen, Enden der Paraphysen braun, in K unverändert. Excipulum mit größeren Kristallkomplexen. Ascosporen hyalin, 1-zellig, 8/Ascus. Chemie: Thallus und Apothecienrand K+ gelb, P+ schwach gelblich (Atranorin).

[17982], Germany, Baden-Württemberg, Kreis Göppingen, zwischen Nassach und Oberberken, Waldweg zwischen Stärkerberg und Gaibhalden, 48.75491° N, 9.54289° E, 377 m, an Esche. Leg. Schumm 03.04.2012, det. Schumm 2012.

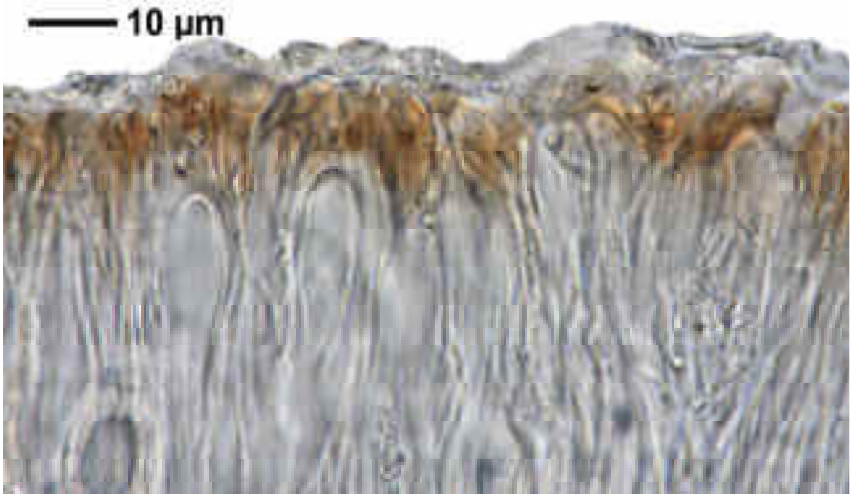
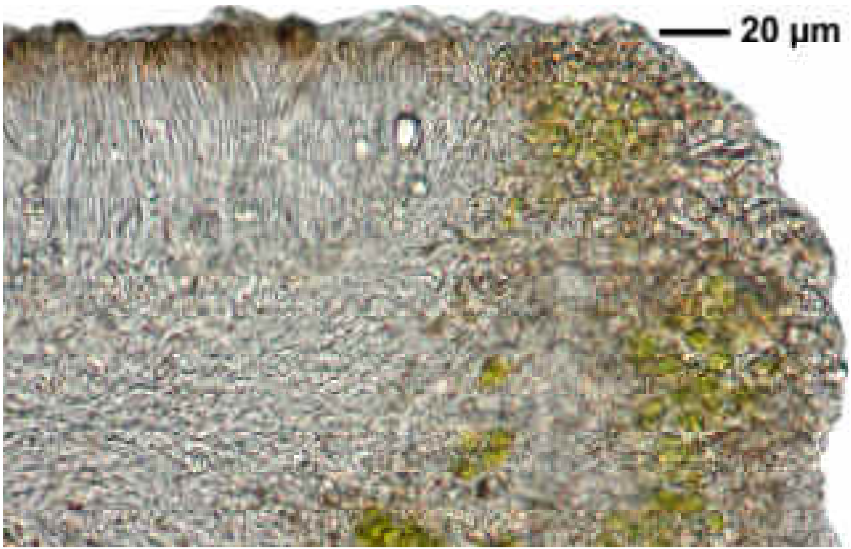




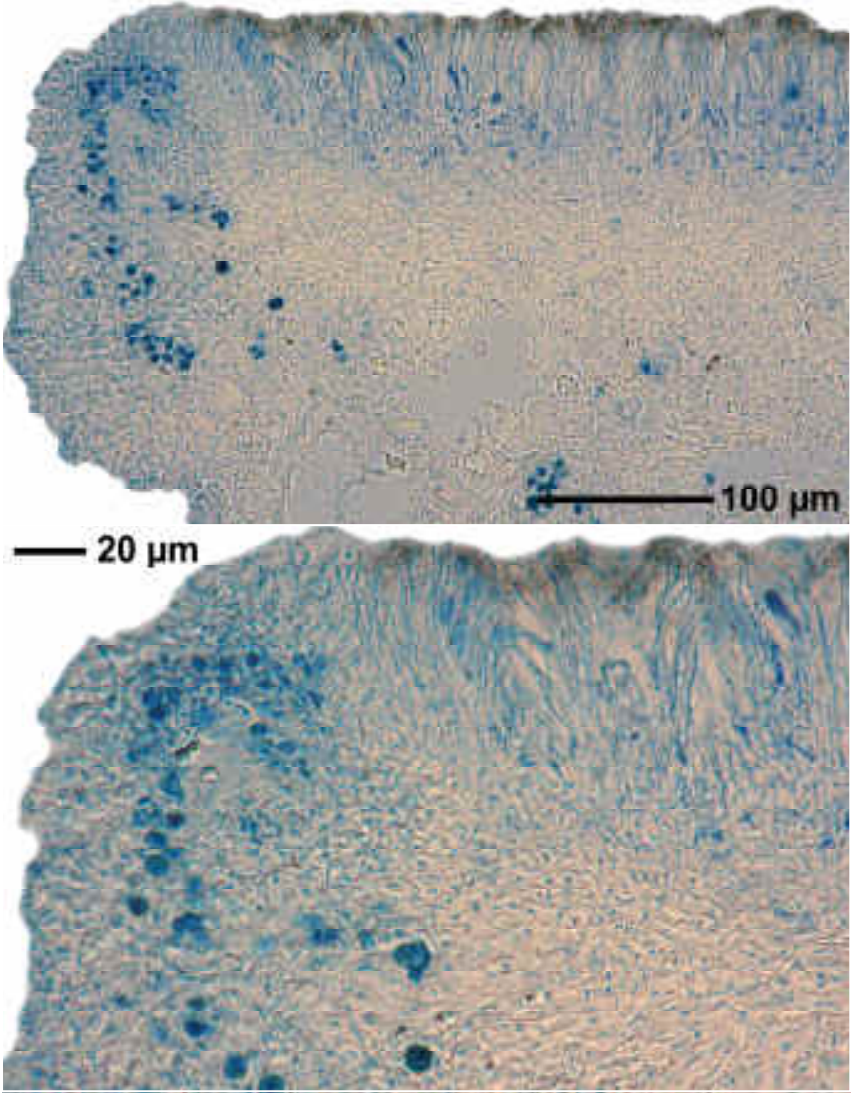
Lecanora argentata



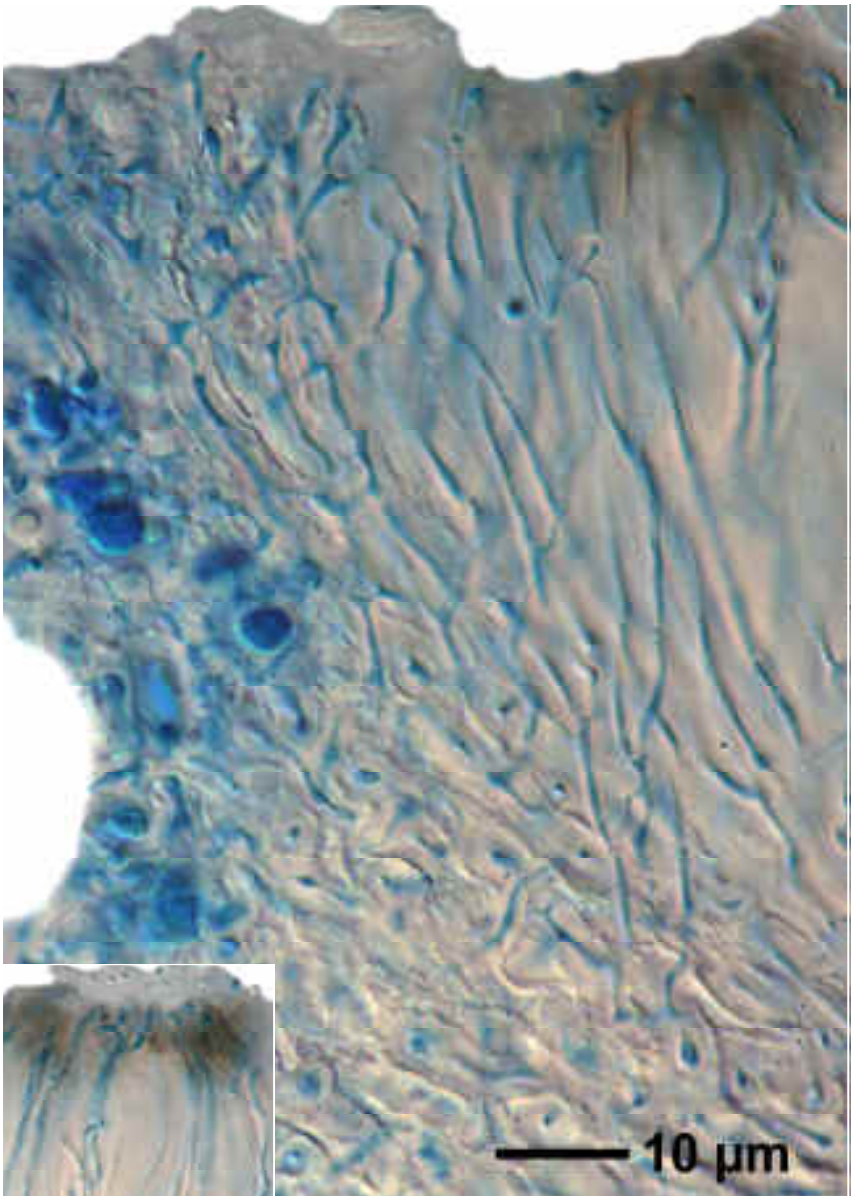
Lecanora argentata



Lecanora argentata



Lecanora argentata



Lecanora argentata