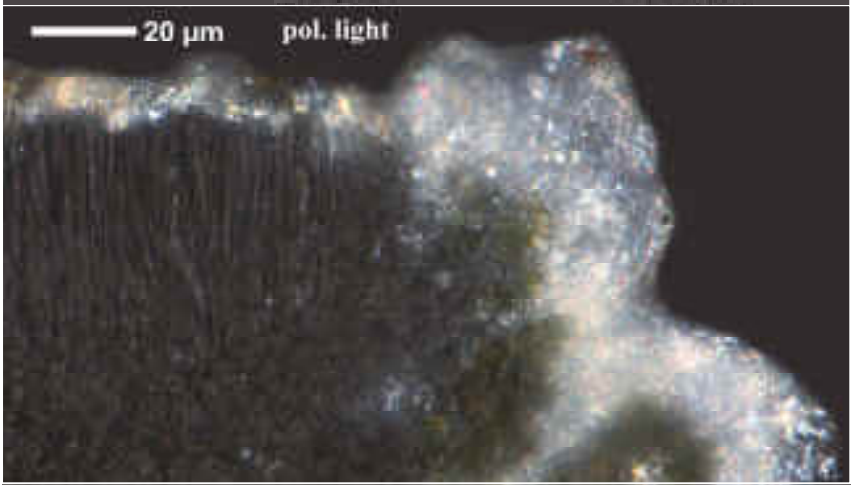
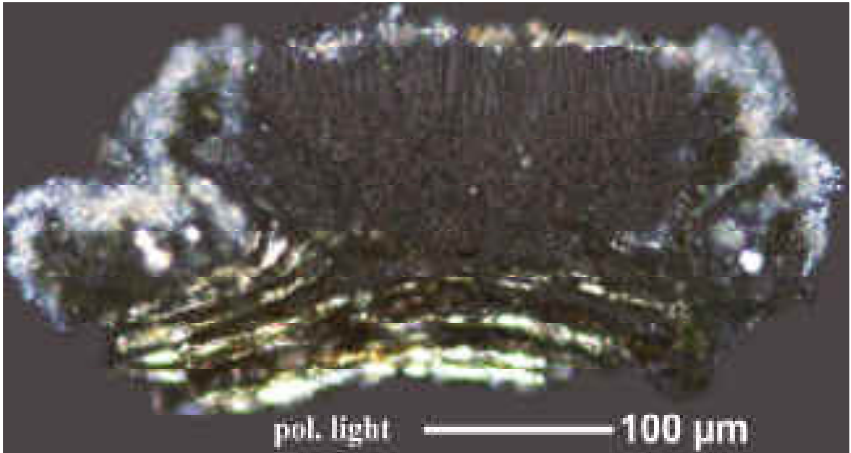
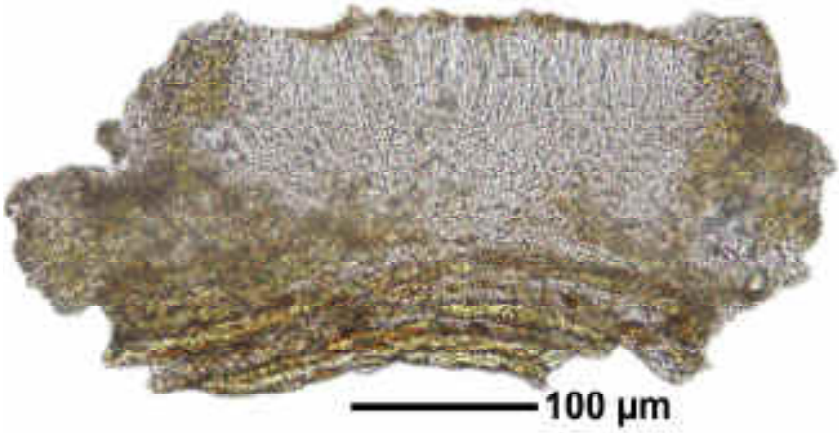


Lecanora leprosa Fée

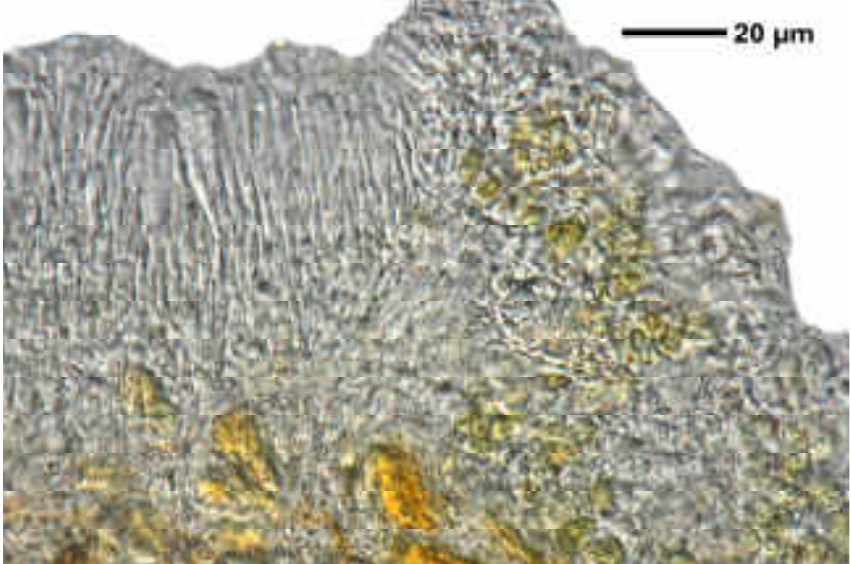
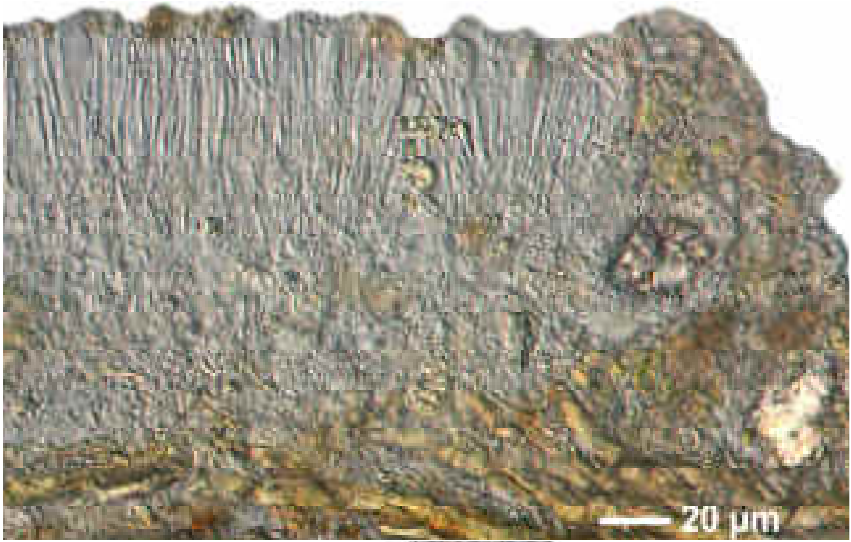
Thallus corticolous, yellowish, warty, without soredia. Prothallus absent or whitish grey. Apothecia 0.2-1.1 mm, first sunken then sessile. Disc orange to yellowish brown. Margins' first warty, later thin or disappearing. Amphithecium and parathecium with crystals. Hypothecium colourless to yellowish. Paraphyses appr. 1.5 μ m thick, tips branched. Ascospores hyaline, 1-cellular, 7-14 x 3-7 μ m. Chemistry: atranorin, gangaleoidin, chloroatranorin (min), norgangaleoidin (min), chlorolecideoidin (tr), leoidin (tr). Lit.: Lumbsch et al. (1993, Tropical Bryology 7: 71-75).

[9542], Thailand, Tempelanlage von Sukhothai. 17°01.019' N, 99°42.273 E, 78 m, corticol. Leg. Schumm 29.03.2002, det. Aptroot 2009.

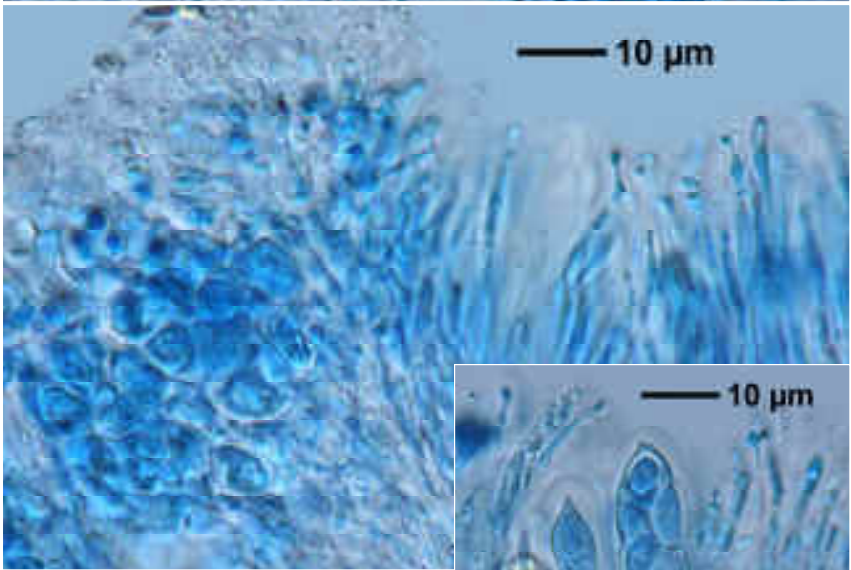
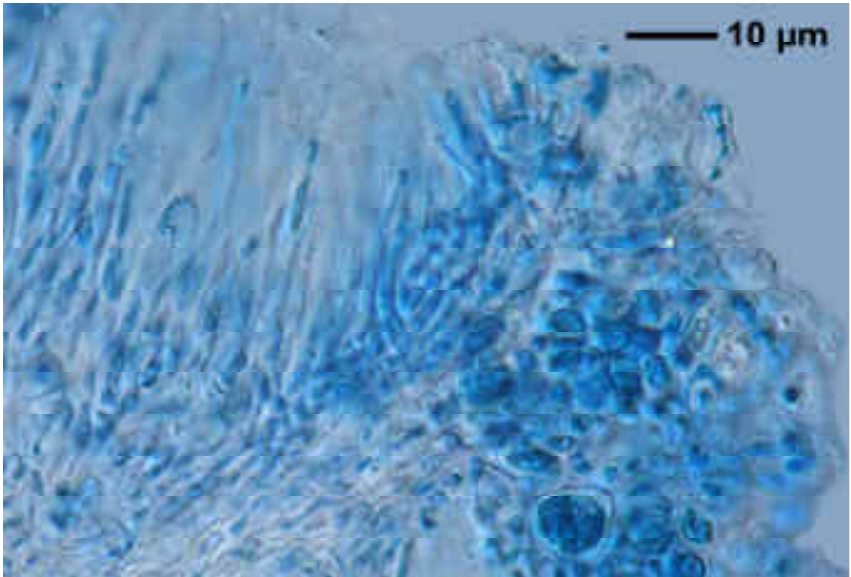




Lecanora leprosa



Lecanora leprosa



Lecanora leprosa