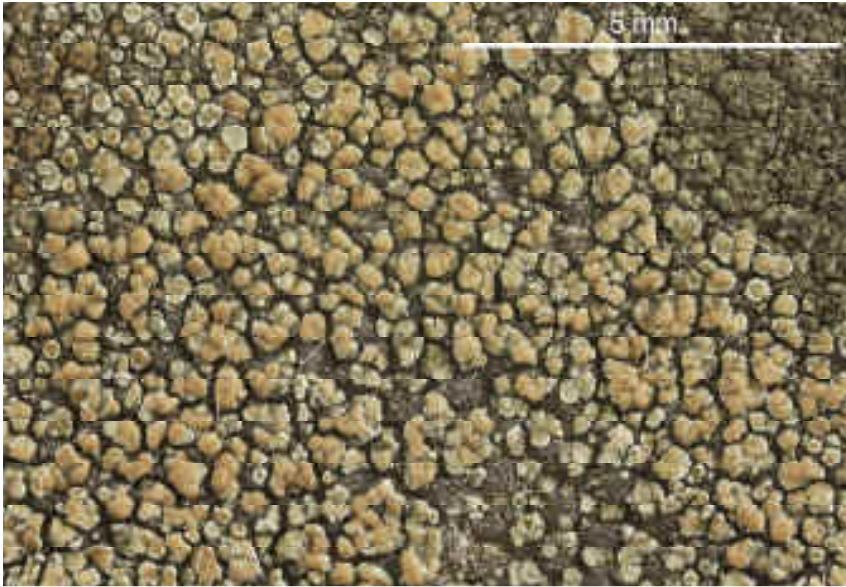


Lecanora polytropa (Ehrh. ex Hoffm.) Rabenh.

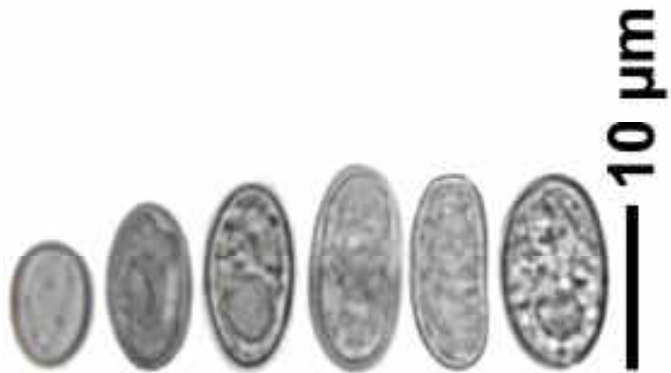
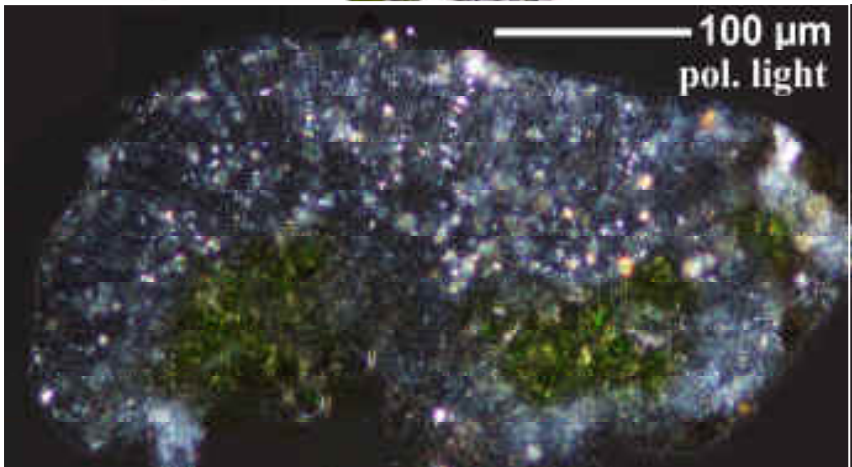
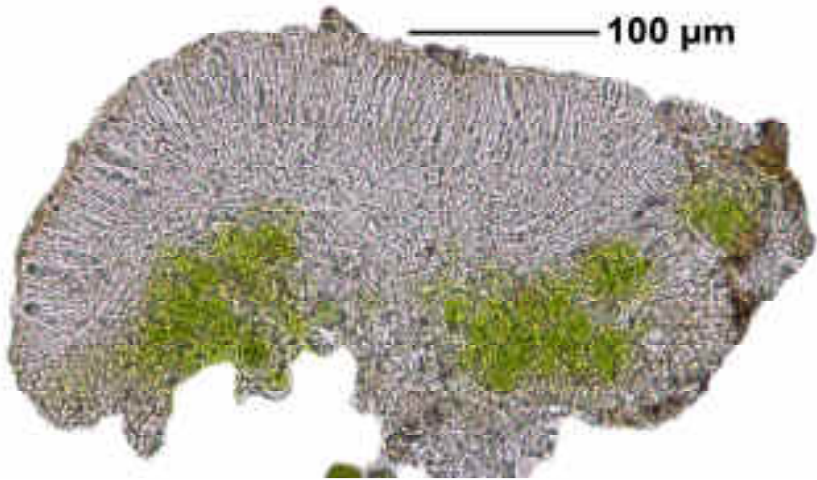
Ap.-ränder grünlich, K-, C-, KC-, P. Excipulum ohne Oxalatkristalle.
Sporen hyalin, 1-zellig, 8/Ascus, 7.7-12.3 x 4.5-6.1 μm .

[17986], Germany, Baden-Württemberg, Kreis Göppingen, Wangen,
Johann-Sebastian-Bach-Str. 14, 48.72438° N, 9.60360° E, 370 m, auf
altem Markisenstoff. TK 7223/4. Leg.et det. Schumm 27.04.2012.

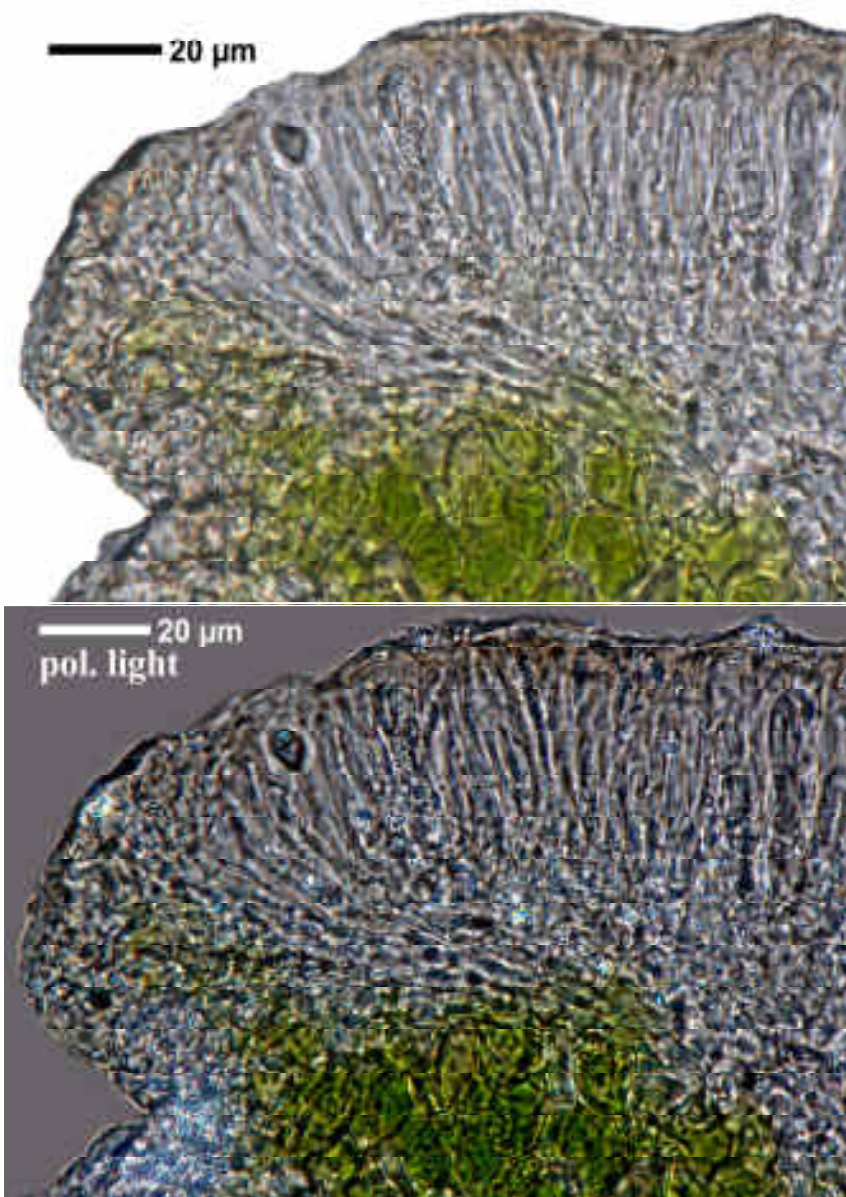




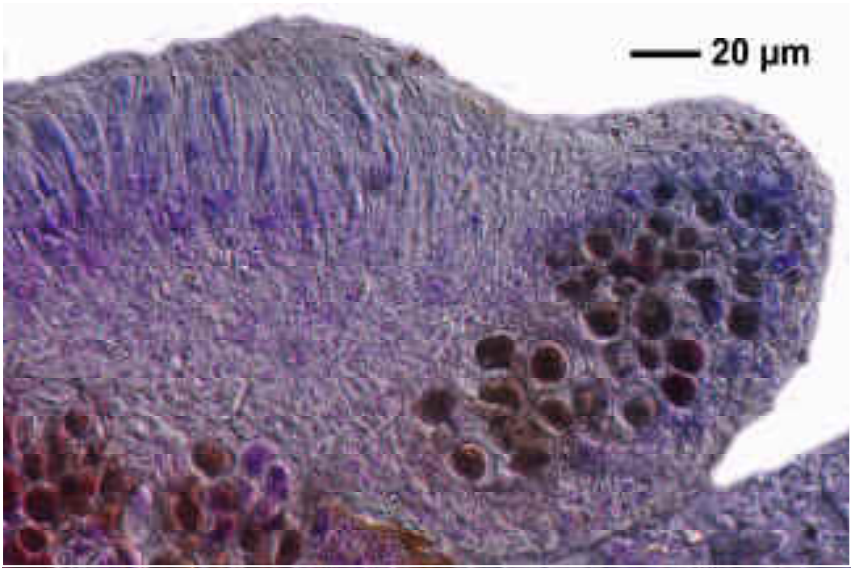
Lecanora polytropa



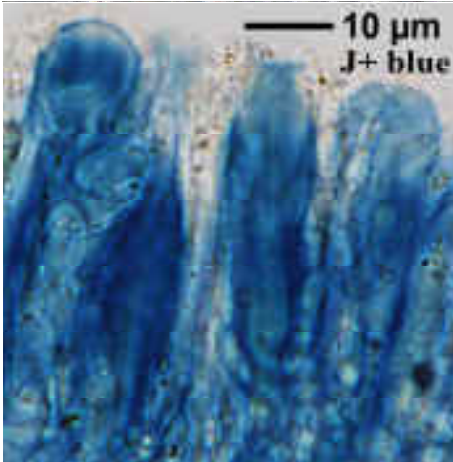
Lecanora polytropa



Lecanora polytropa



Lecanora polytropa



Lecanora polytropa