

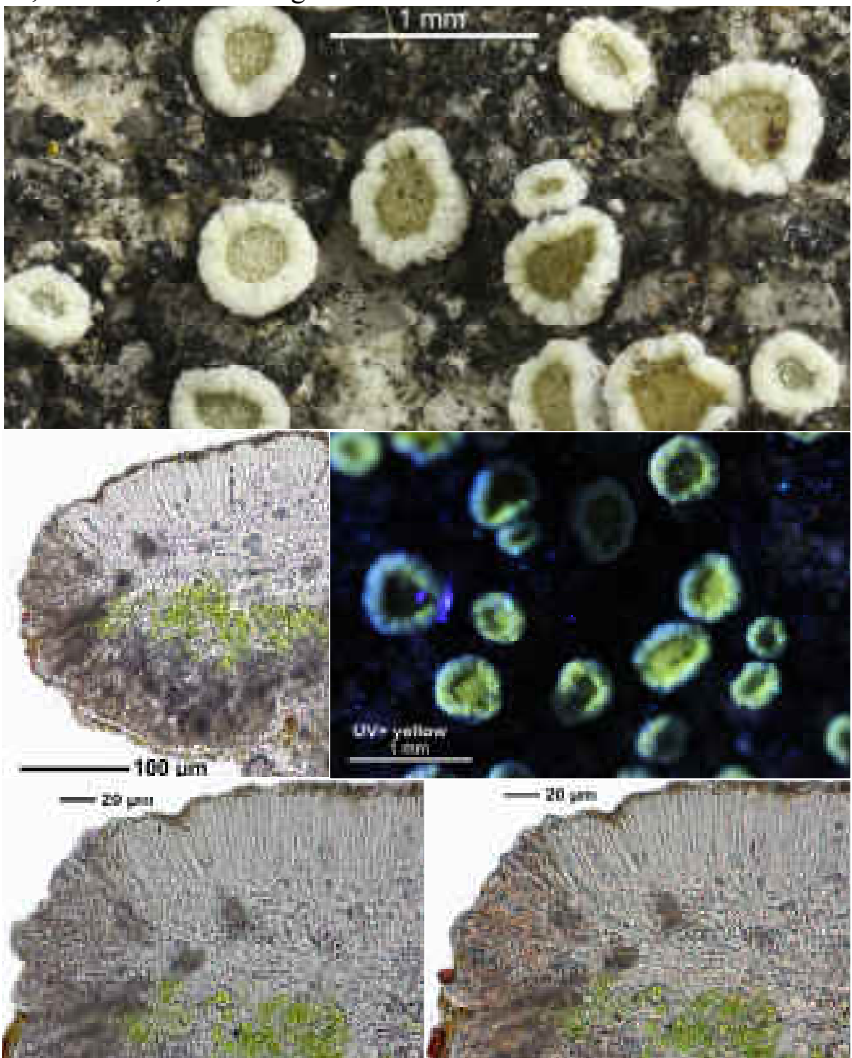
*Lecanora semipallida* H.Magn.

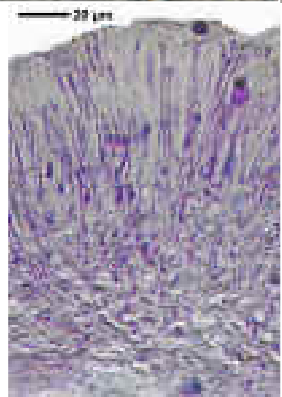
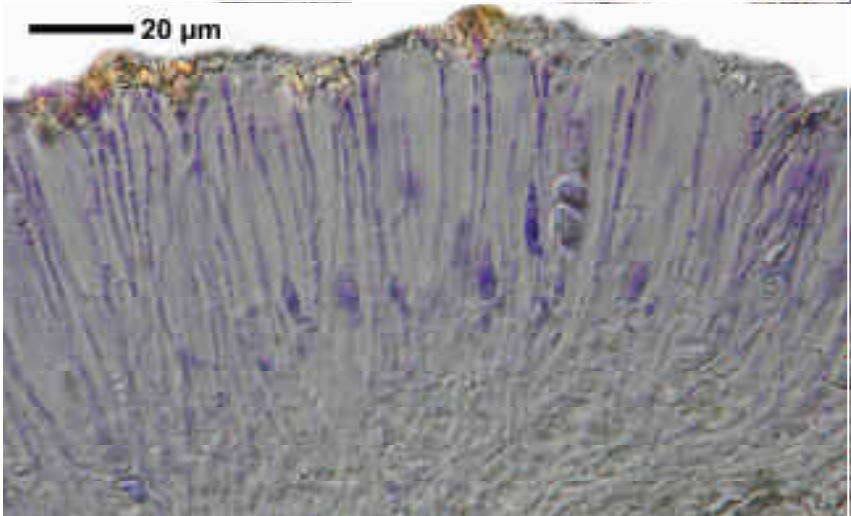
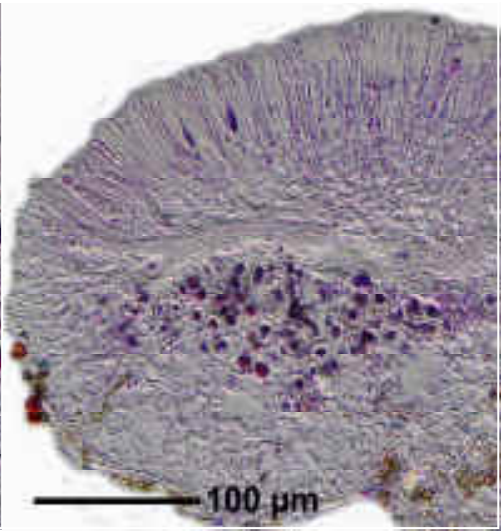
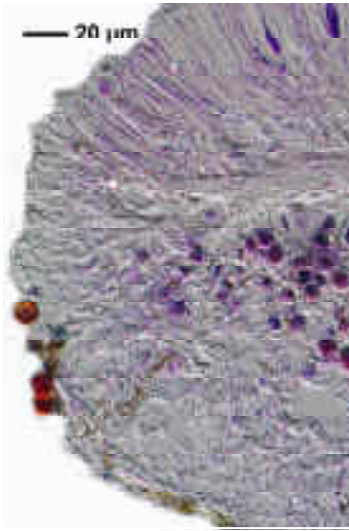
[= *Lecanora xanthostoma* Cl.Roux ex Fröberg]

[= *Lecanora flotoviana* auct.]

Thallus endolithisch, grau bis schwärzlich. Chemie: Th. K-, C-, KC-, P-. Apothecienrand K+ gelb, C± gelb, KC+ gelb, P-. Scheiben und teils auch der Rand UV+ intensiv gelb (Vinetorin)

[16493], Germany, Baden-Württemberg, Rems-Murr-Kreis, Stetten/Rems, Haldenbachtal, an kalkhaltigem Sandsteinblock, 9,33998° E, 48,77637° N, 311 m. Leg. et det. Schumm 17.05.2010.





*Lecanora semipallida*