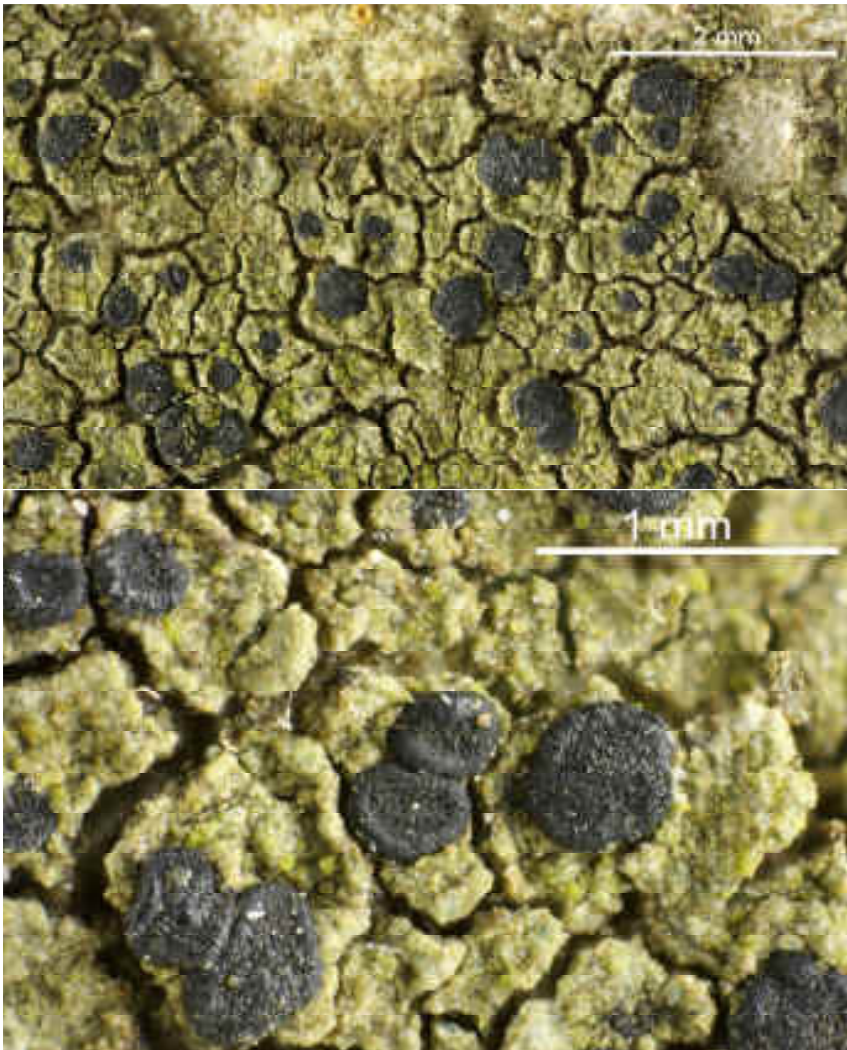
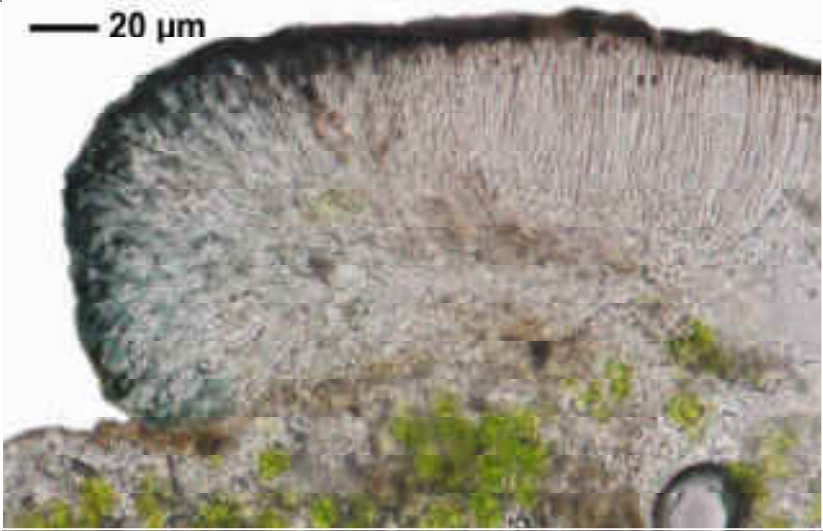
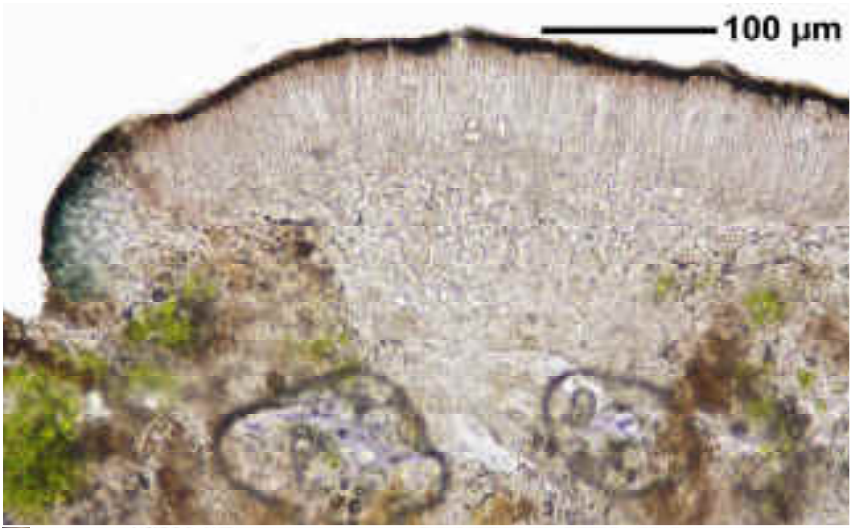


*Lecidella stigmatea* (Ach.) Hertel & Leuckert

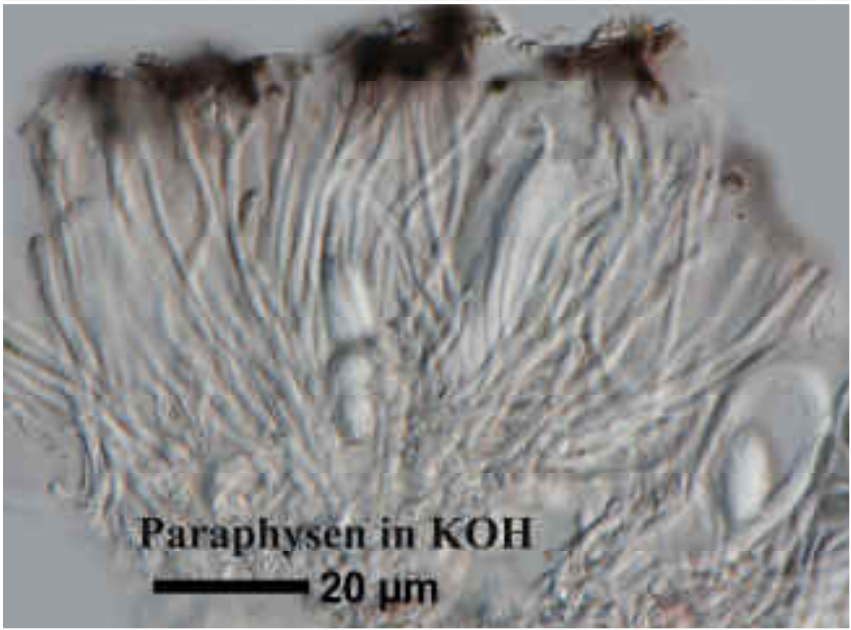
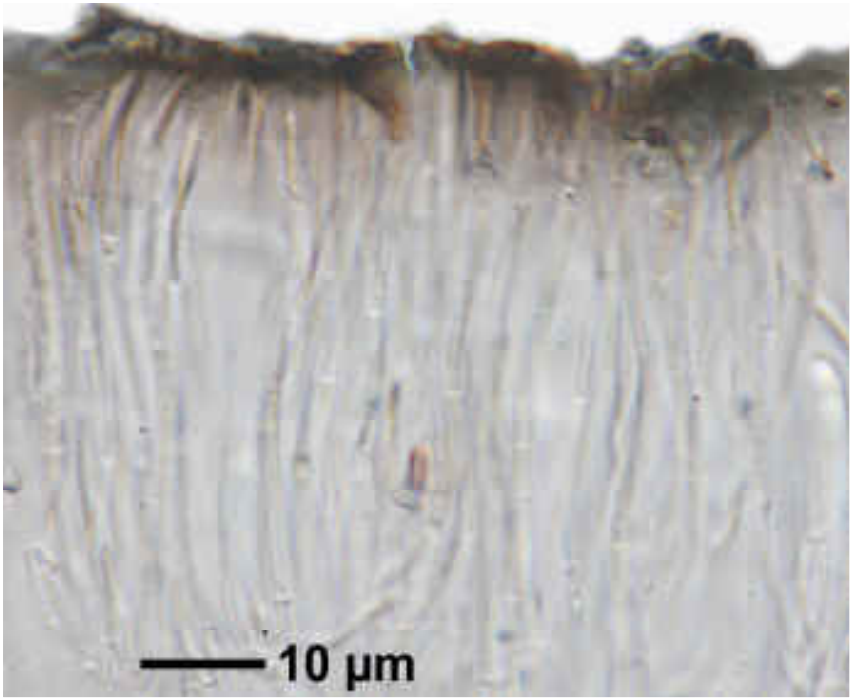
Thallus sehr variabel, fast fehlend bis areoliert. Epithecium 5 µm, braunschwarz, in K+ violett. Hymenium hell, nicht inspers, 65-80 µm. Hypothecium hell. Excipulum innen hell, außen dunkel grün, in K grün bleibend. Paraphysen unverzweigt. Sporen hyalin, 1-zellig, 8/Ascus, ca. 15 x 9 µm.

[16560], Germany, Baden-Württemberg, Kreis Göppingen, Messelstein bei Donzdorf, 48,69045° N, 9,83113° E, 750 m, an Kalkfelsen. Leg. Schumm 25.07.2010.

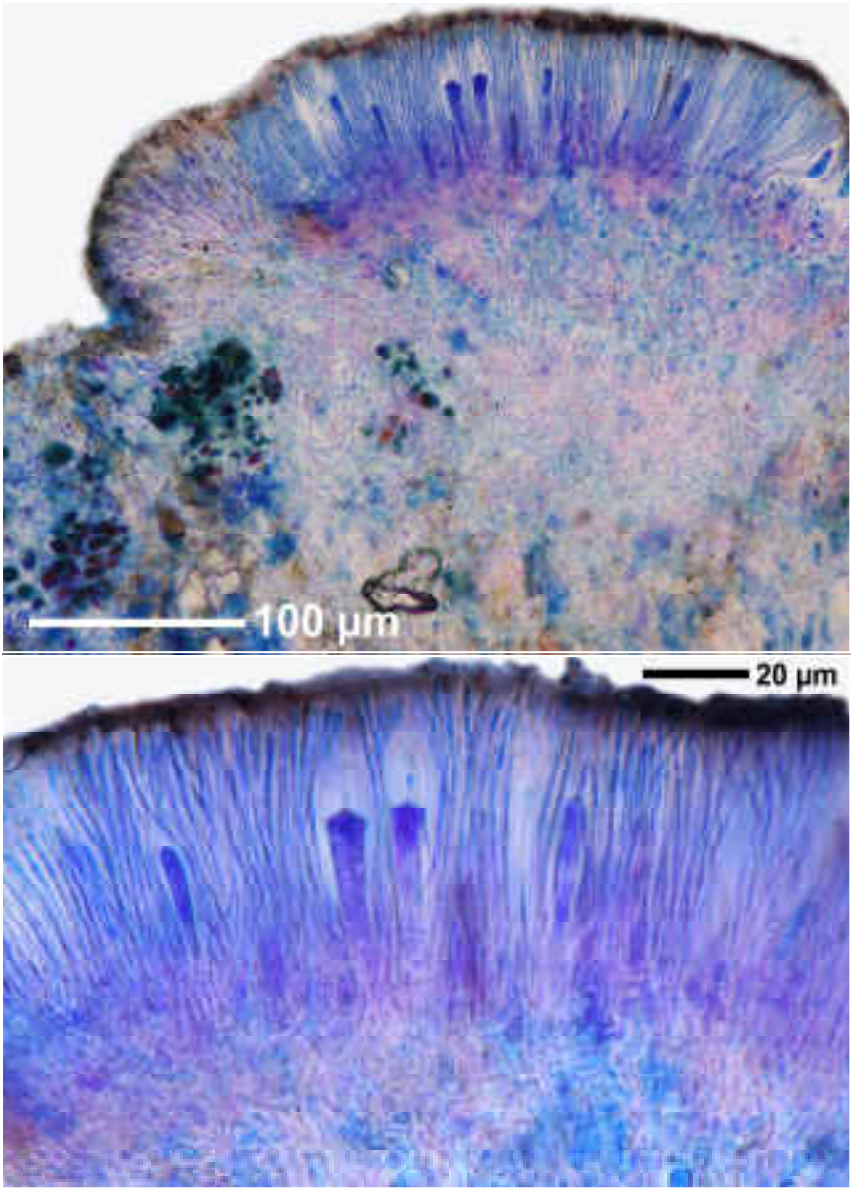




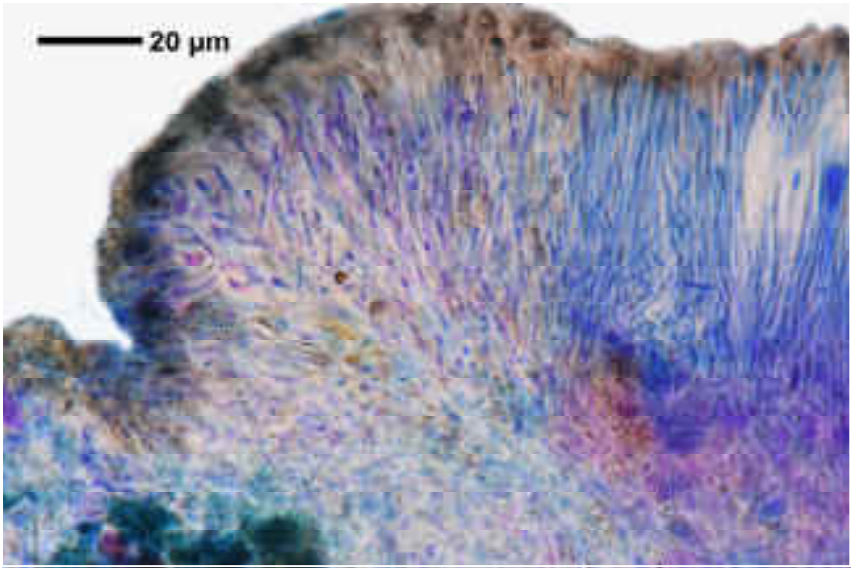
*Lecidella stigmatea*



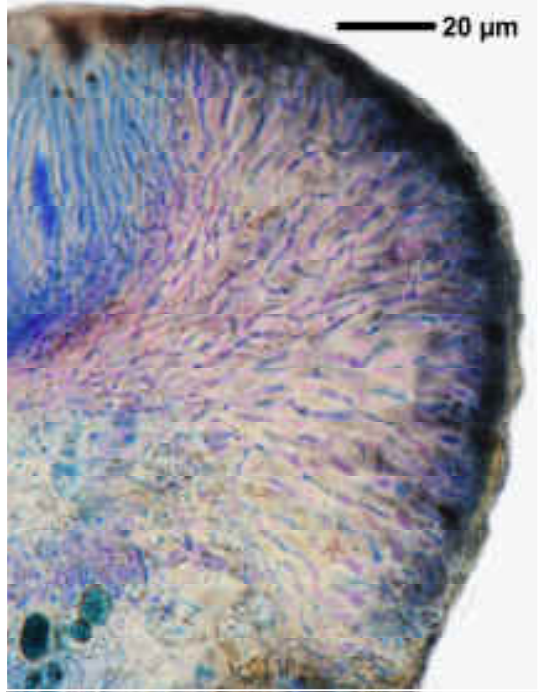
*Lecidella stigmatea*



*Lecidella stigmatea*



10  $\mu\text{m}$



*Lacidella stigmata*



— 20  $\mu\text{m}$   
**K&J+ blau**

*Lecidella stigmatea*