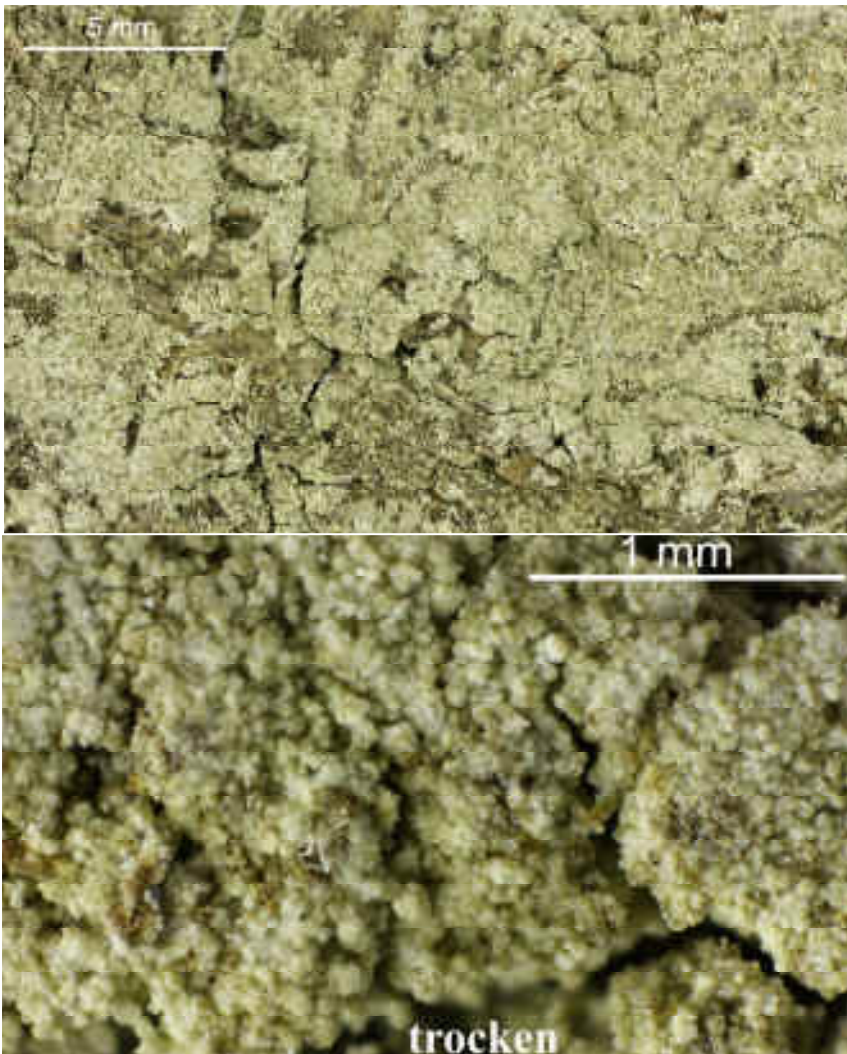
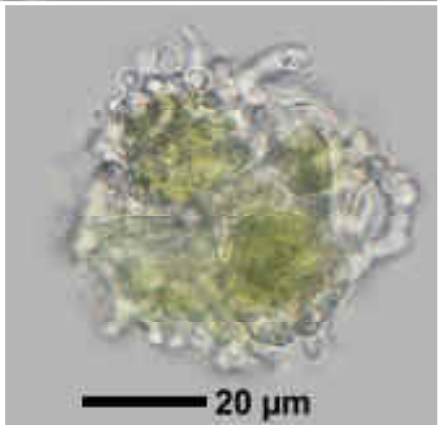
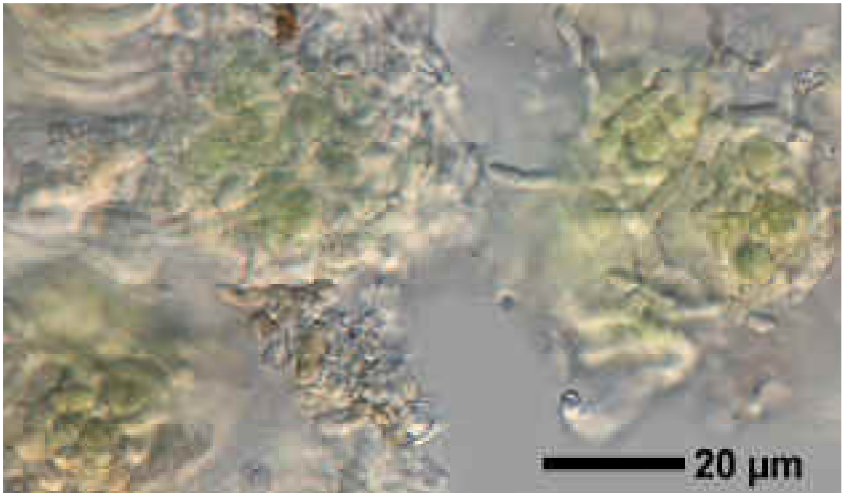
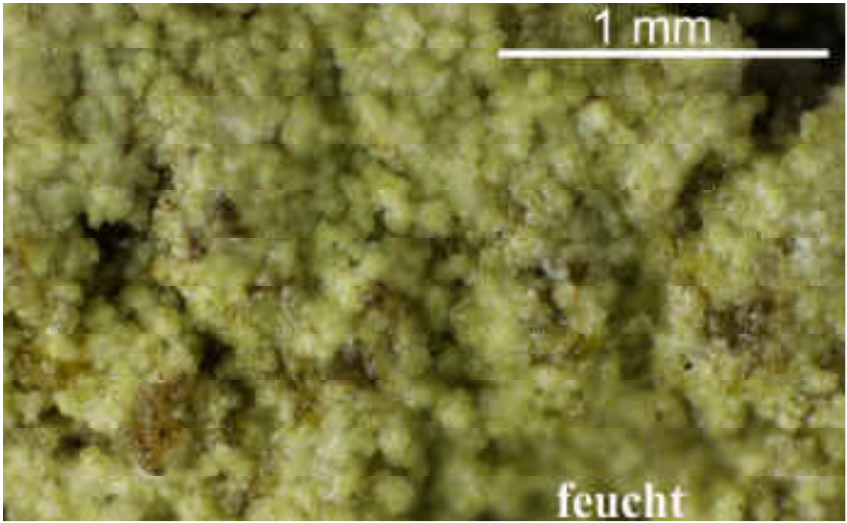


*Lepraria incana* (L.) Ach.

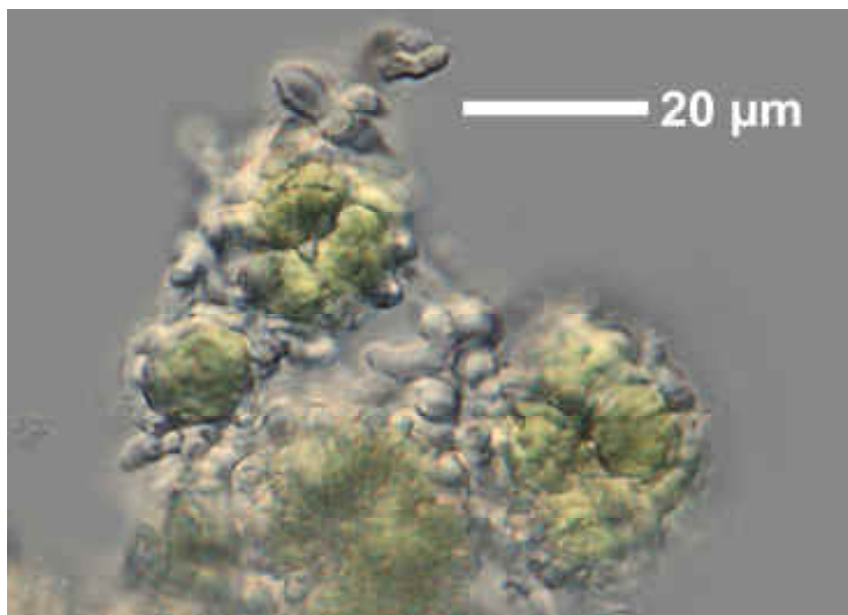
Unter der Soredienschicht, bestehend aus kugeligen, verbackenen Soredienhaufen, eine hellbräunliche, wattige, algenfreie Medullaschicht.  
Chemie: Zeorin, Divaricatsäure, UVK:+ bläulichgrau

[9591], Germany, Baden-Württemberg, Kreis Göppingen, Wangen, im Quercus-Carpinus-Wald Breitenloh östlich des kleinen Teichs von Oberwälden. 48°44.337' N, 9°35.586' E, 440 m, TK 7223. Leg. F. & D. Schumm 07.07.2002, det. F. Schumm 07.07.2002, (TLC p128/4)

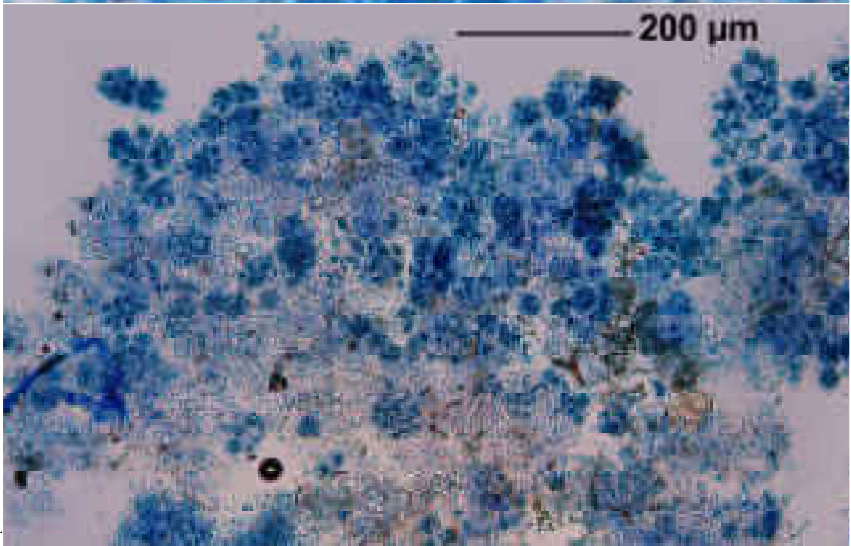
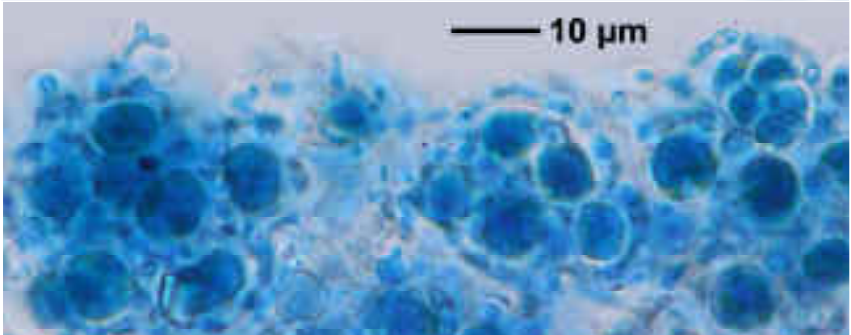
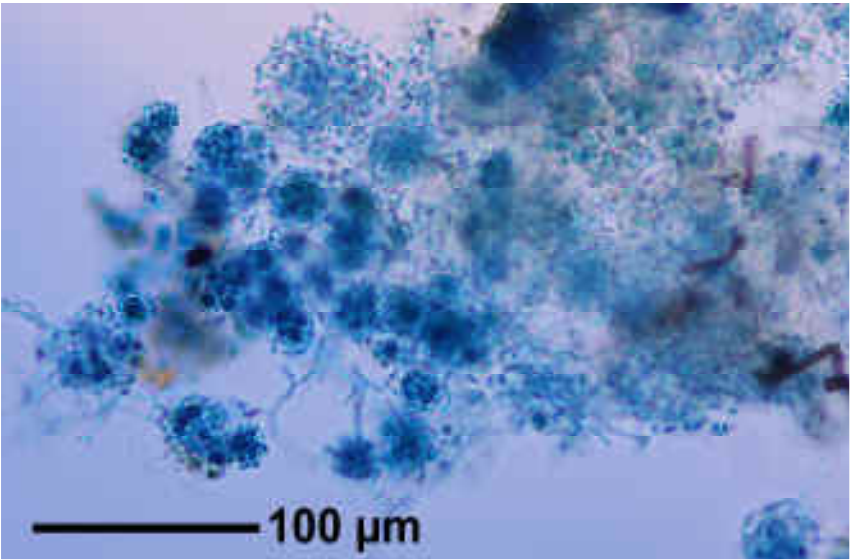


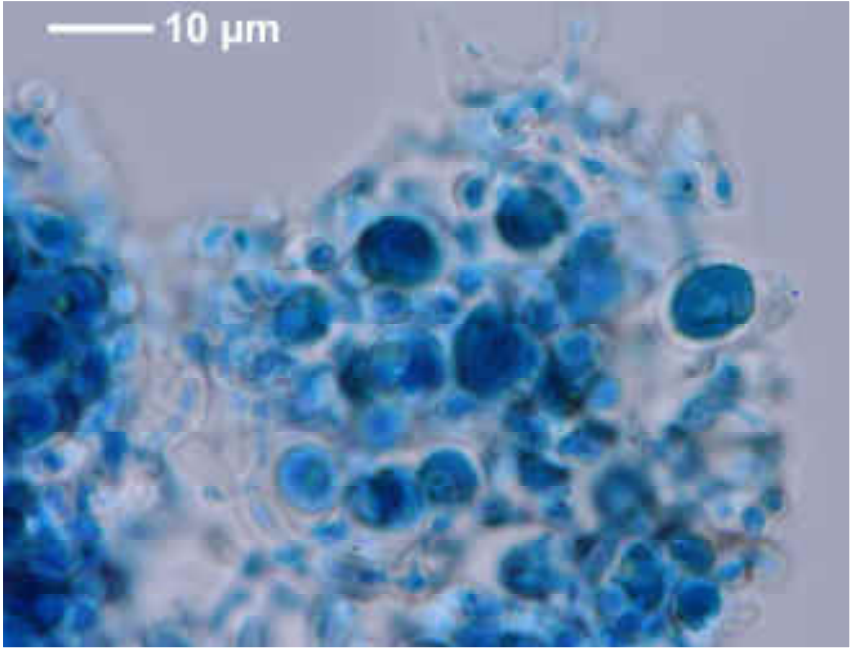
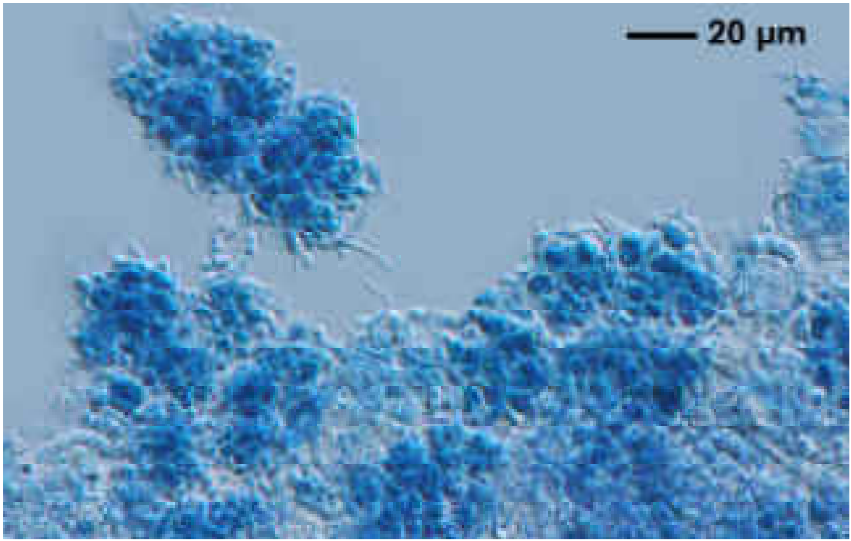


*Lepraria incana*

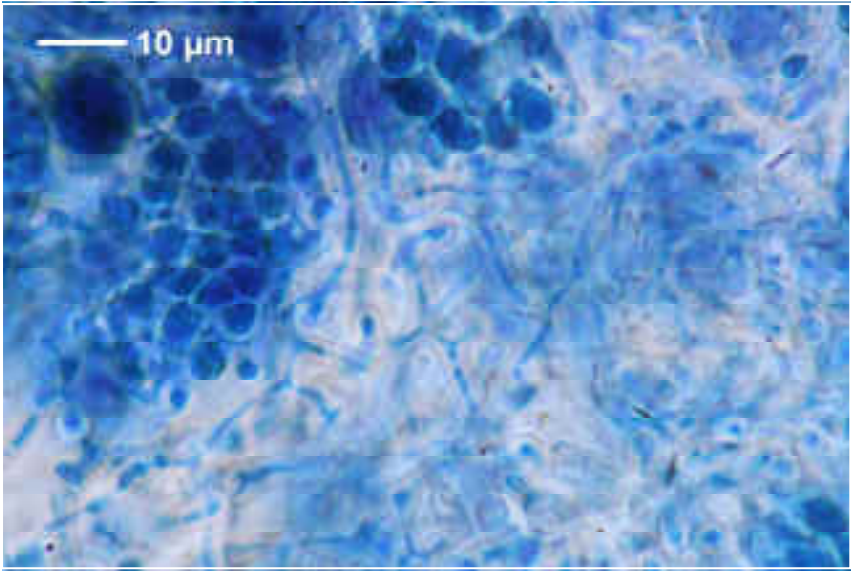
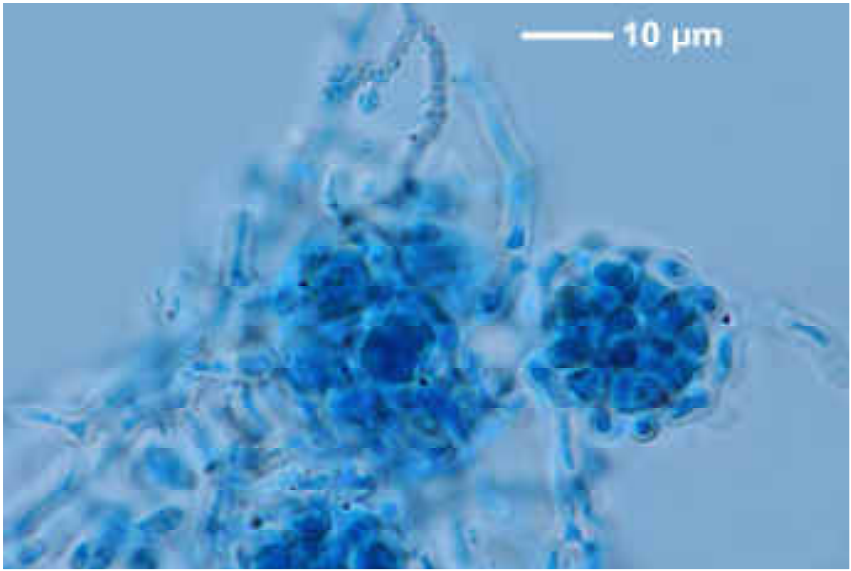


*Lepraria incana*





*Lepraria incana*



*Lepraria incana*