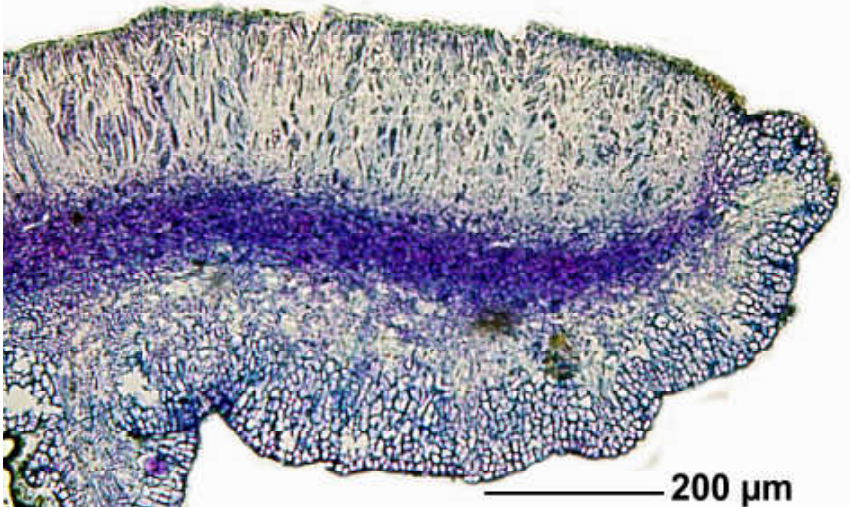
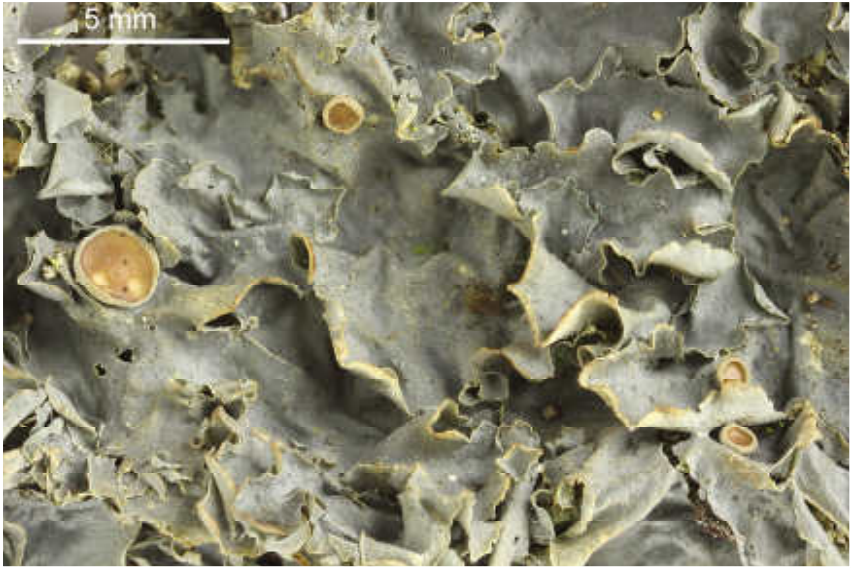
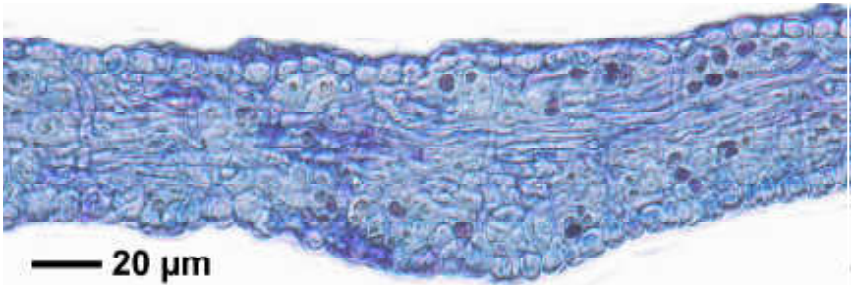


Leptogium azureum (Sw. ex Ach.) Mont.

Thallus bluish grey, without isidia or phyllidia.

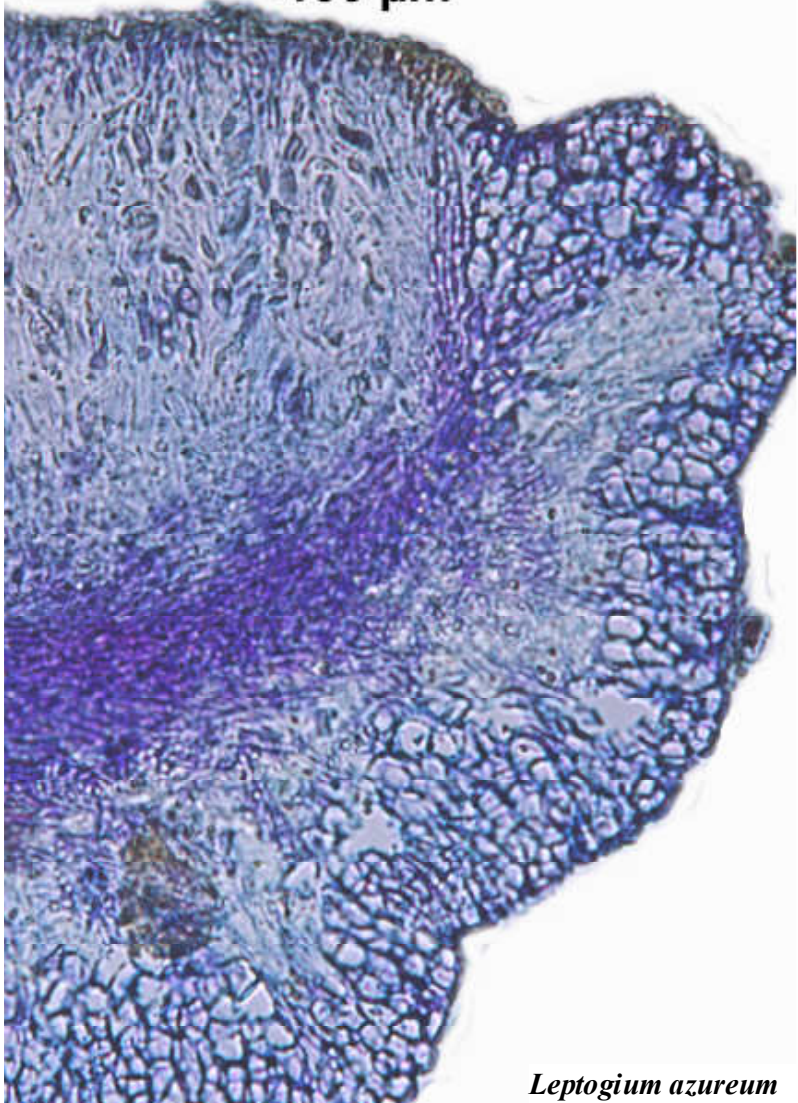
[15519], La Reunion, Anse des Cascades, meist auf Cocos-Palmen;
21,18511°S, 55,82711°E, 0 m. Leg. Schumm & Frahm 14.09.2009,
det. Jorgensen 2009. Dubl. in Bergen.



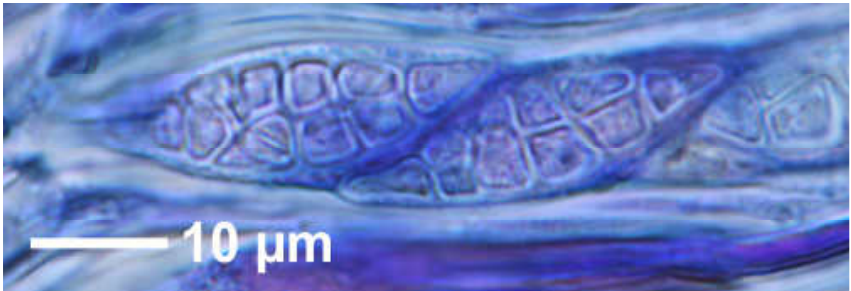


— 20 μm

— 100 μm



Leptogium azureum



Leptogium azureum