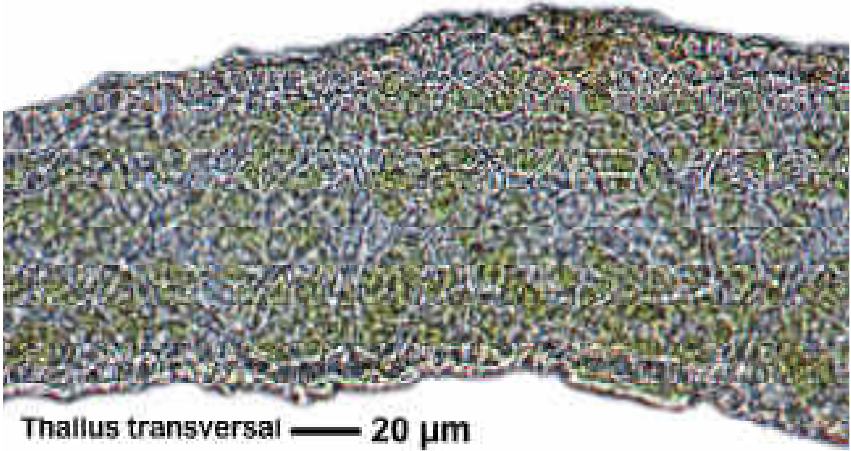
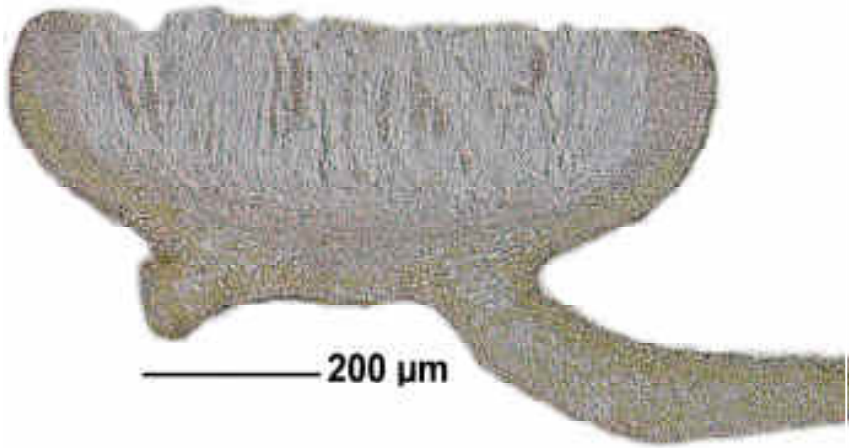


*Leptogium rivale* Tuck.

Thallus kleinblättrig, dunkelgrau, Lappen 0,2-1,5 mm breit, 150-175  $\mu\text{m}$ , dick, durchgehend paraplectenchymatisch, Markzellen 9-10  $\mu\text{m}$ , Cortezellen ca. 6  $\mu\text{m}$ . Photobiont: Nostoc, 3  $\mu\text{m}$ . Sporen muriform, ca. 5 Quers-, 0-1 Längssepten, ca. 35 x 17  $\mu\text{m}$ , meist 4/Ascus.

Lit.: Sierk (Bryologist 1964: 273), Jørgensen, P.M. (Lichenologist 1994: 25).

[16497], Germany, Nordrhein-Westfalen, Bergisches Land, Solingen, Tal der Wupper, im Dorperhofer Bach, amphibisch auf kleinen moosbewachsenen Silikatblöcken, 120 m. Leg. G. Zimmermann 2010.

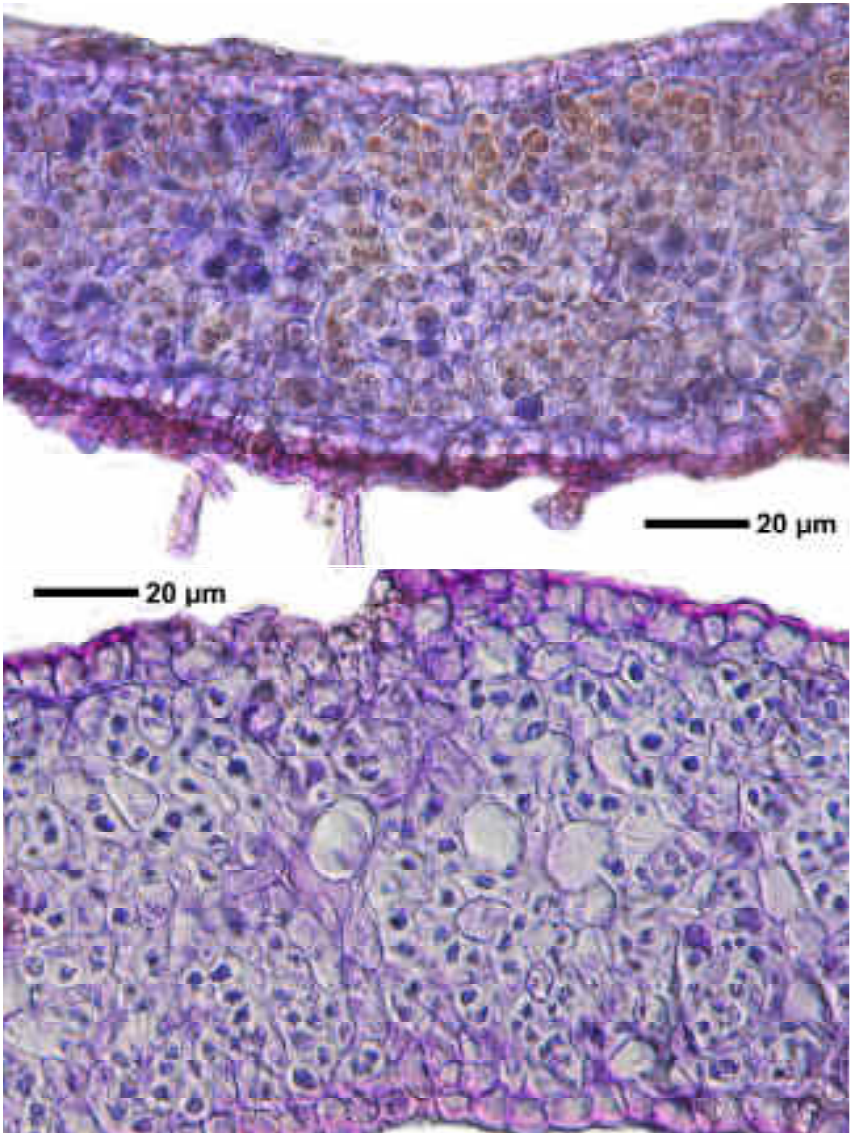


*Leptogium rivale* Tuck.

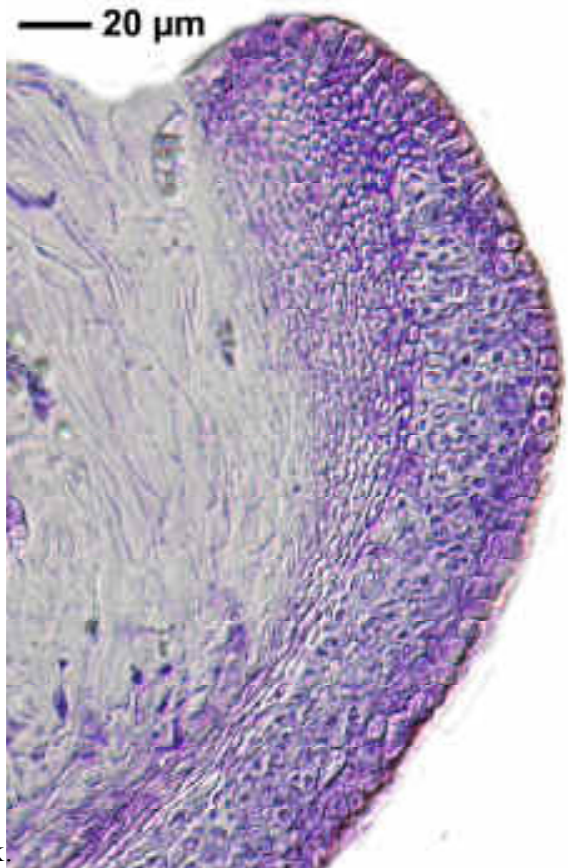
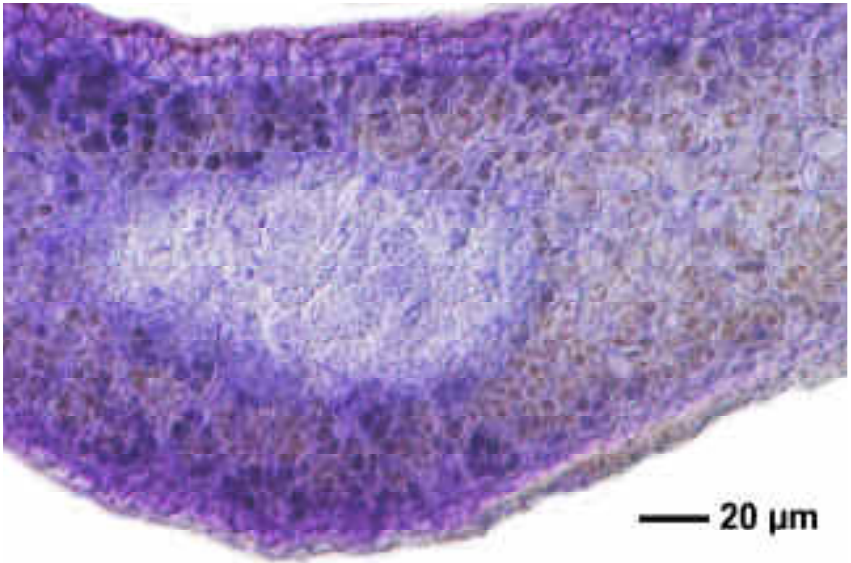


*Leptogium rivale* Tuck

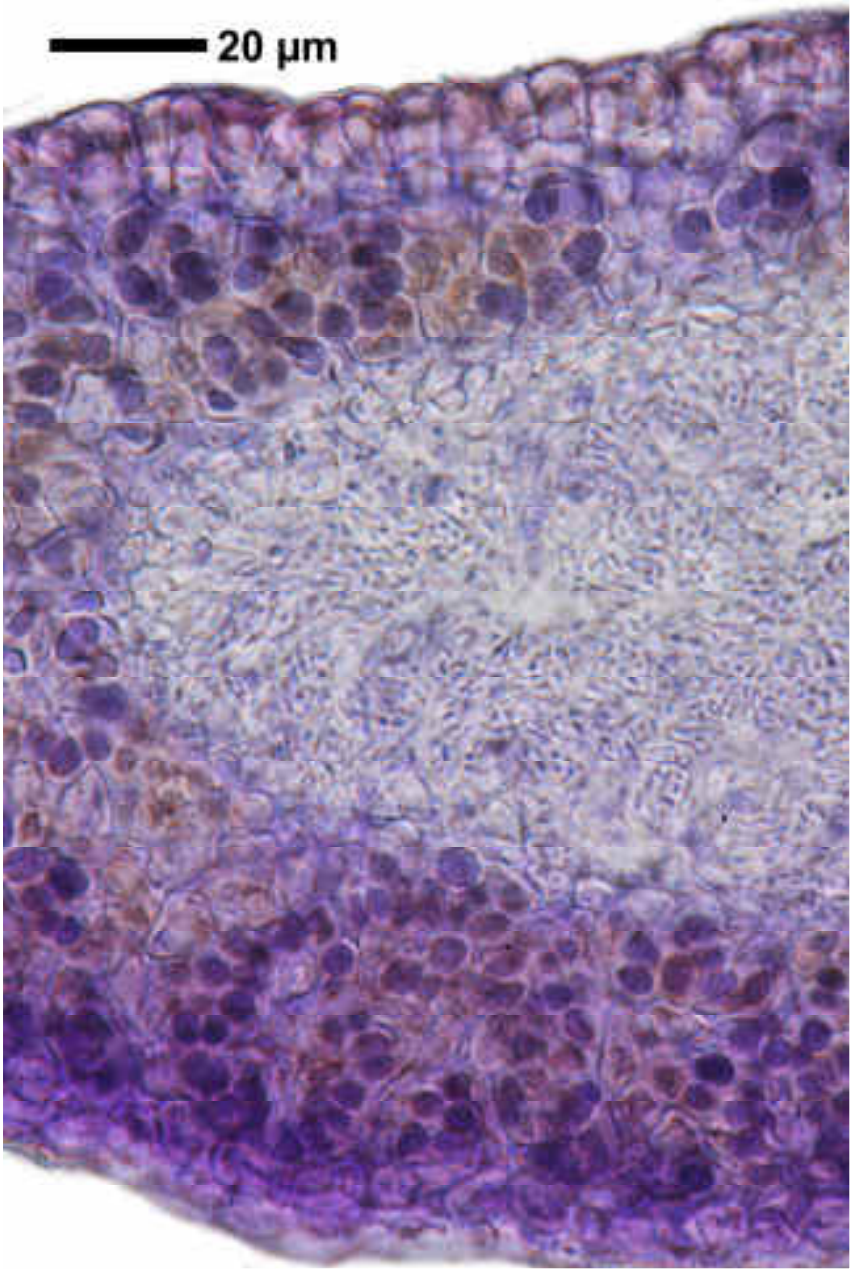




*Leptogium rivale* Tuck.

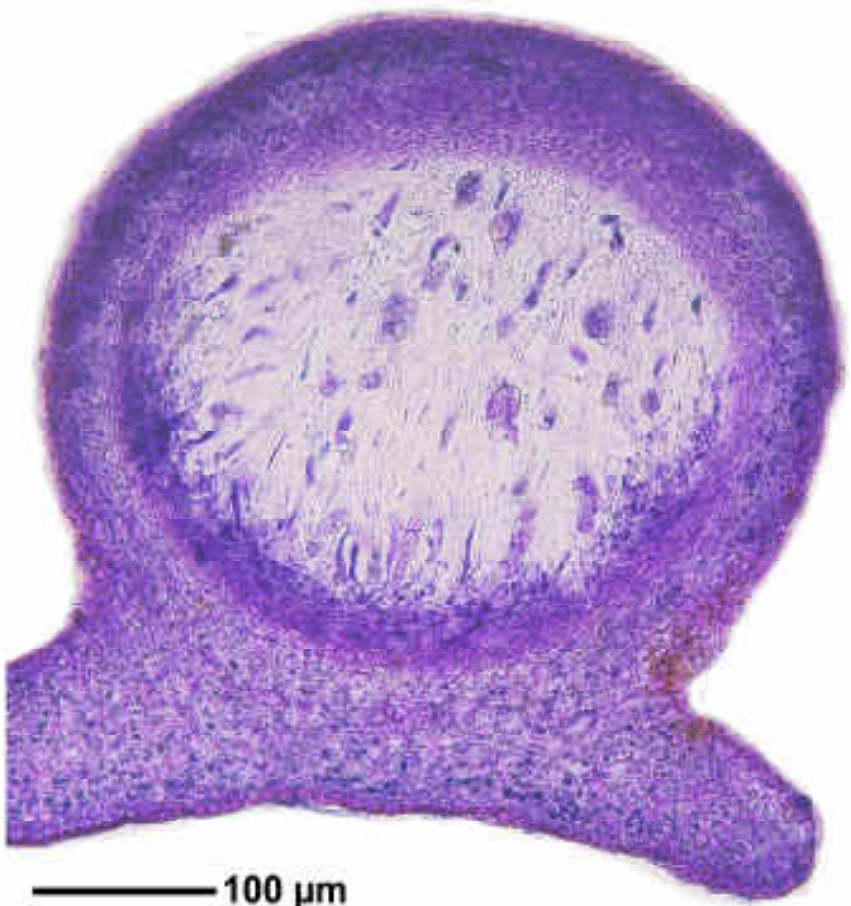


*Leptogium rivale* Tuck.



*Leptogium rivale* Tuck.





*Leptogium rivale* Tuck.