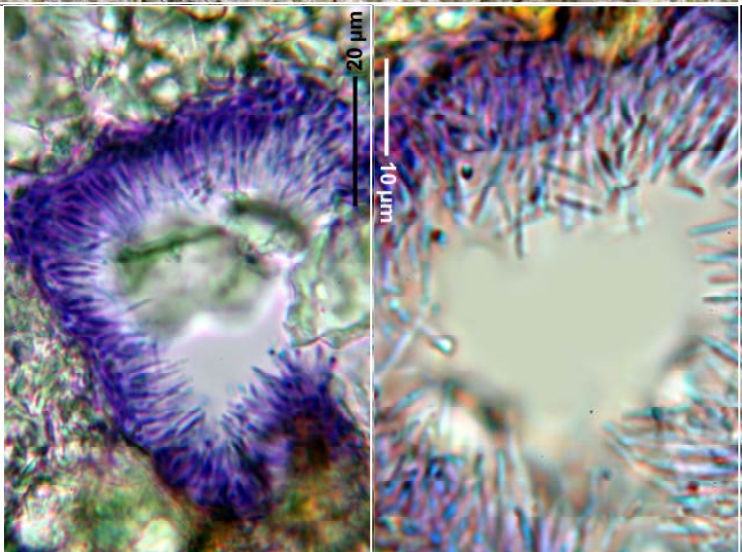
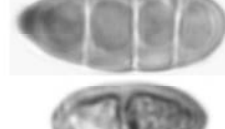
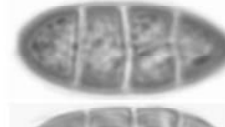
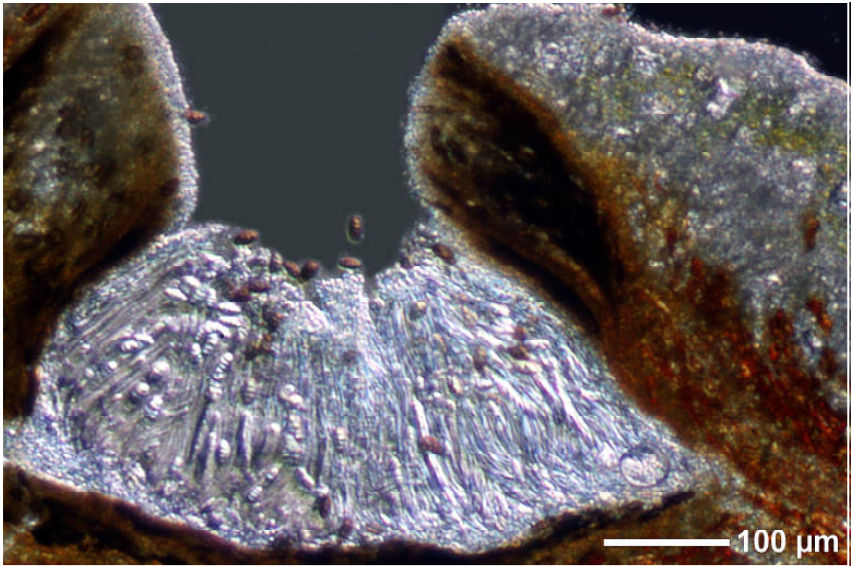


*Leucodecton subcompunctum* (Nyl.) A.Frisch

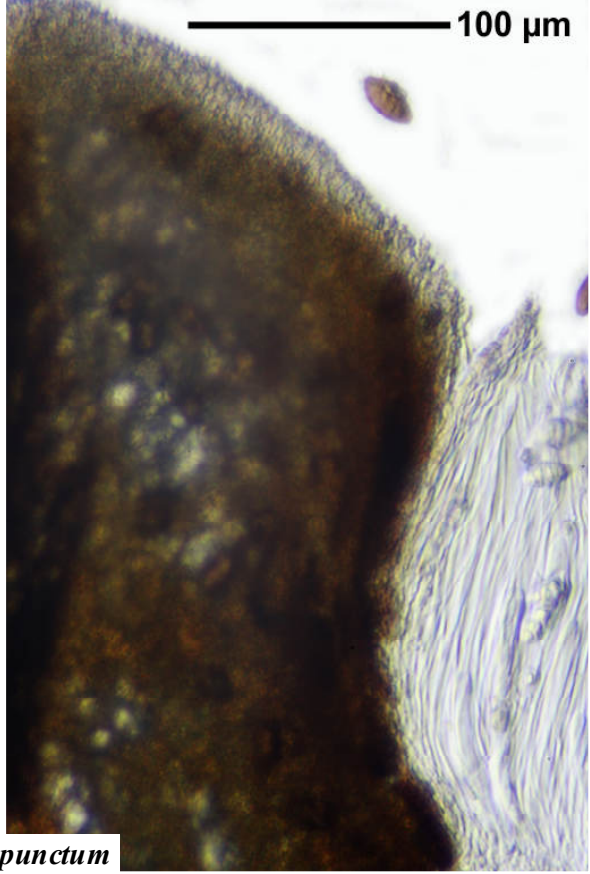
Spores first hyaline then grey, submuriform, warty, 1-3-septate transversally, 0-2-septate longitudinally, 22-23 x 10-12  $\mu\text{m}$ , I+ blue. Thallus K+ redbrown, P-, C-, KC-, P-, UV+ yellow-whitish.

[14639], Seychellen, Mahe, Morne Blanc (rechts der Straße von Victoria nach Port Gland), 4°39.593' S, 55°26.248' E, 480 m. Leg. Schumm & Frahm 09.10.2008, det. Aptroot 2008.



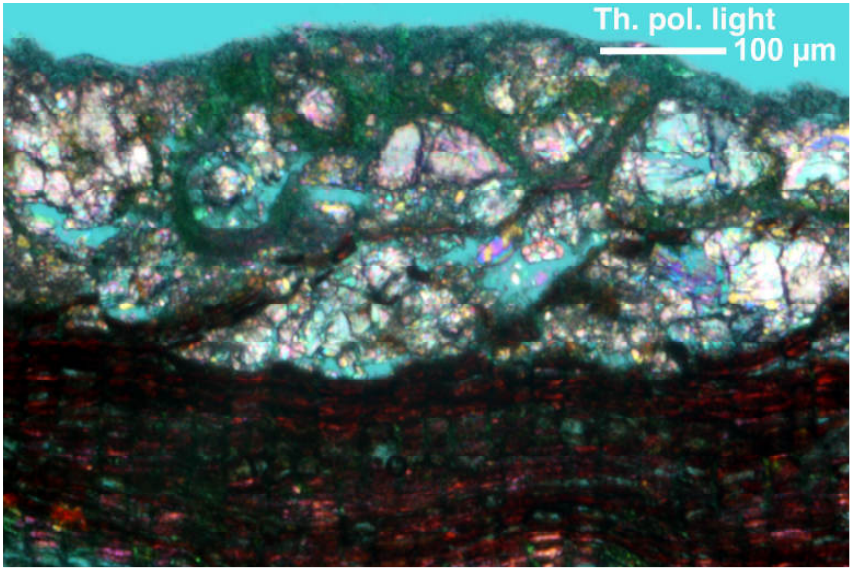


10 μm



*Leucodecton subcompunctum*





*Leucodecton subcompunctum*