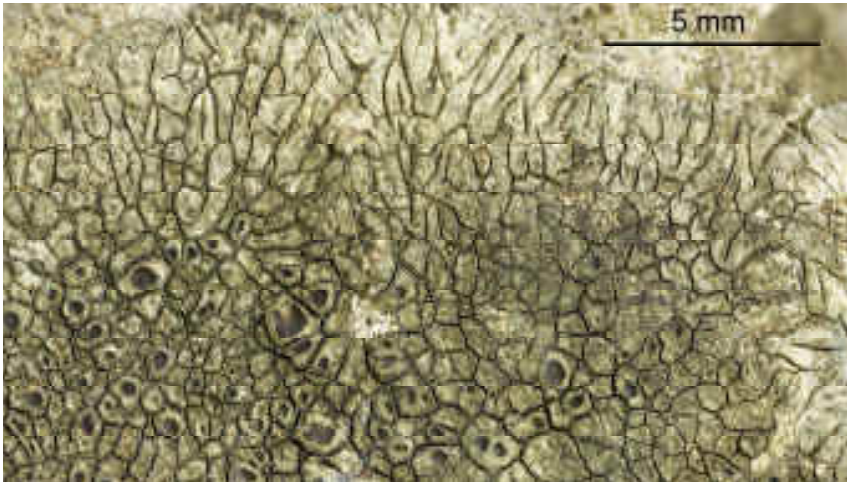
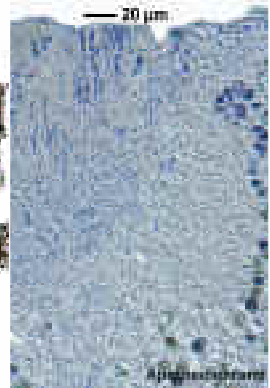
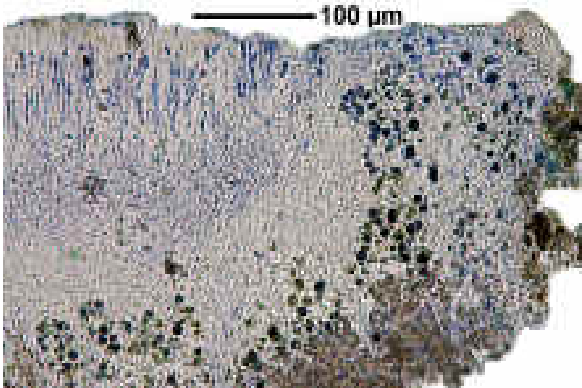
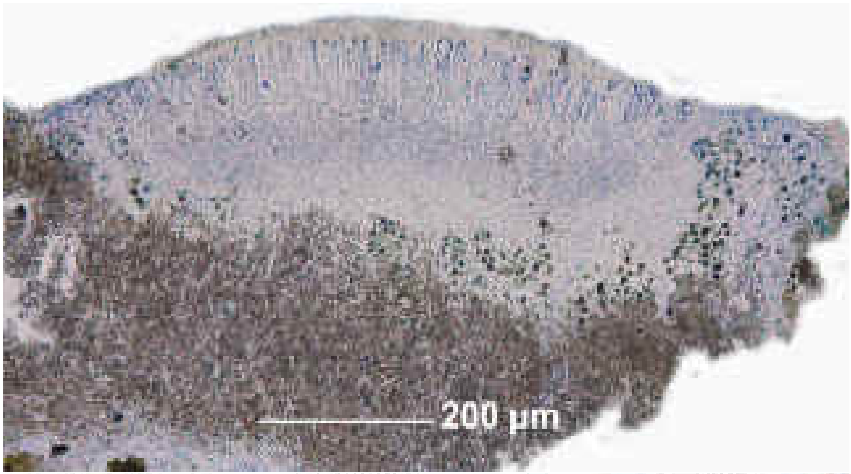


Lobothallia radiosa (Hoffm.) Hafellner
[= *Aspicilia radiosa* (Hoffm.) Poelt & Leukert]
[= *Lecanora radiosa* (Hoffm.) Schaerer]
[= *Lecanora subcircinata* Nyl.]

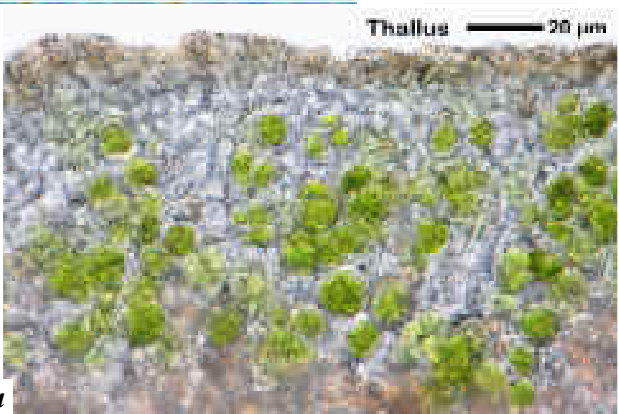
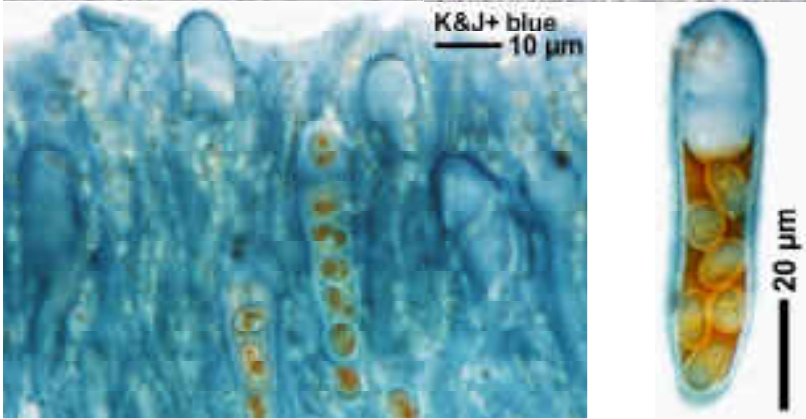
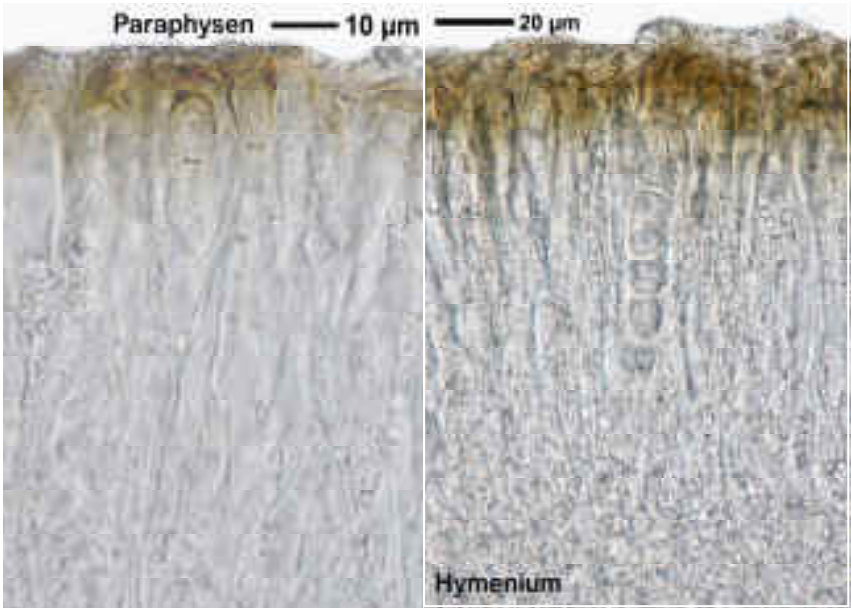
Thallus rosettig, am Rand schmallappig, dicht zusammenschließend, braungrau bis weißgrau, in der Mitte rissig-areoliert. Apothecien bis 1,5 mm breit, eingesenkt. Scheibe schwarz bis braun. Epithecium braun. Hypothecium hell. Sporen 1-zellig, hyalin, 8/Ascus, 11-15 x 6-8 µm. Chemie: Norstictinsäure, ± Atranorin, ± Stictinsäure od. Ch-; Mark K- bis K+ rot (stellenweise).

[16504], Germany, Baden-Württemberg, Kreis Göppingen, Gosbach-Bad Ditzenbach, Tierstein, 48,57461° N, 9,68471° E, 737 m, auf Kalkfelsen am Albrand. Leg. et det. Schumm 20.06.2010





Lobothallia radiosa



Lobothallia radiosa