

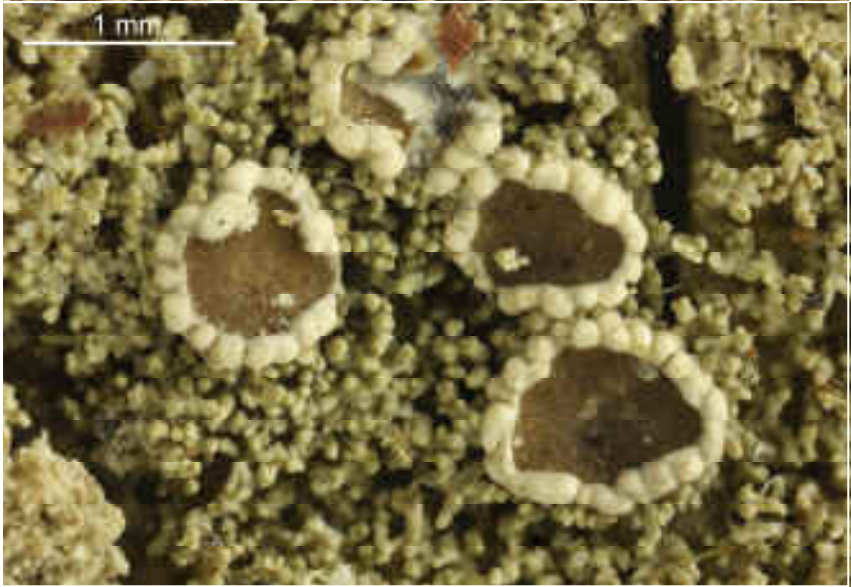
Malmidea corallophora Aptroot & Schumm sp. nov.

Holotypus: Herbarium F. Schumm Nr. 7448. Thallus corticolus, isidioidus. Hypothecium atrofuscum. Medulla thalli et isidorum alba. Sporae 30 x 15 µm.

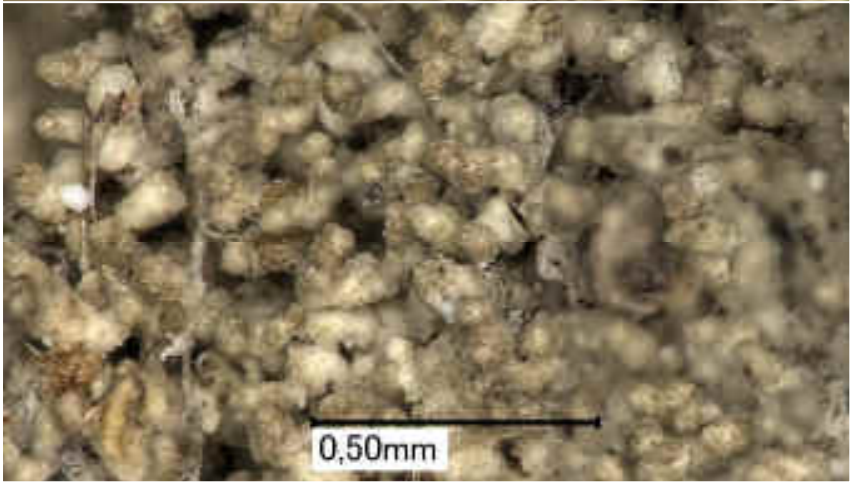
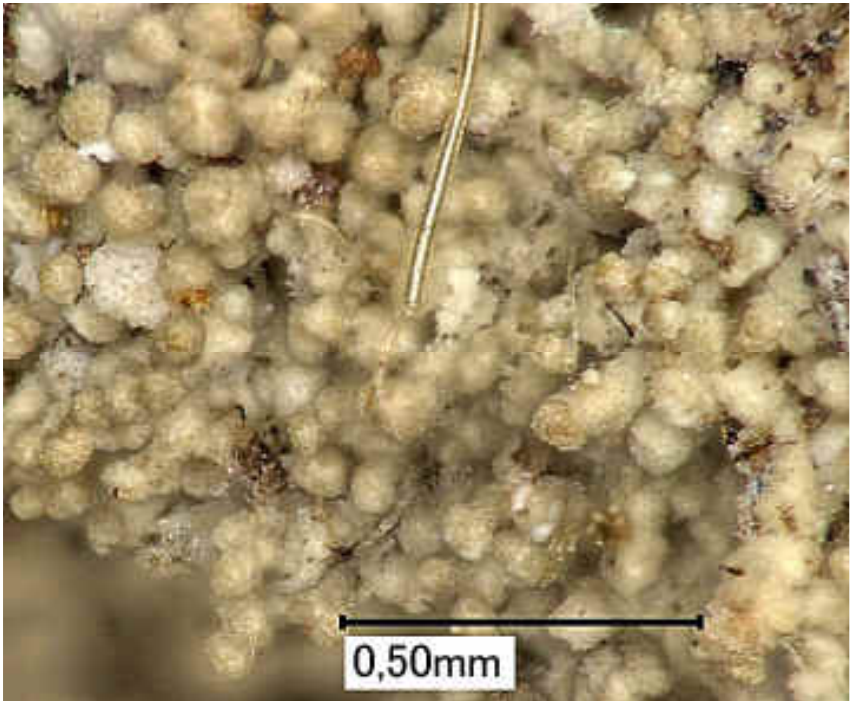
Thallus greenish grey, with cylindrical to coralloid isidia, medulla white. Epithecium pale to brownish, c. 5 µm. Hymenium not inspersioned, c. 125 µm high. Paraphyses c. 1 µm, branched and with some anastomoses in the upper part. Hypothecium brown-black, 38-125 µm, with nests of spongiose medulla full of fine crystals (K+ yellow). Ascospores simple, hyalin, halonate, 8/asus, c. 30 x 15 µm. Chemistry of the Thallus: Nil (TLC). The species is characterized by the coralloid thin isidia and the white medulla.

[7448], Philippines, Negros, Prov. Negros Oriental, Mt. Talinis (Cuernos de Negros), Lunga Nature Trail von Valencia Barangay Lunga (N 9°16.676, E 123°13.839) bis zum Camp Vendiola (N 09°16.281, E 123°11.410), zwischen 530-1100 m, bei 1050 m. Leg. Schumm 09.08.2000.

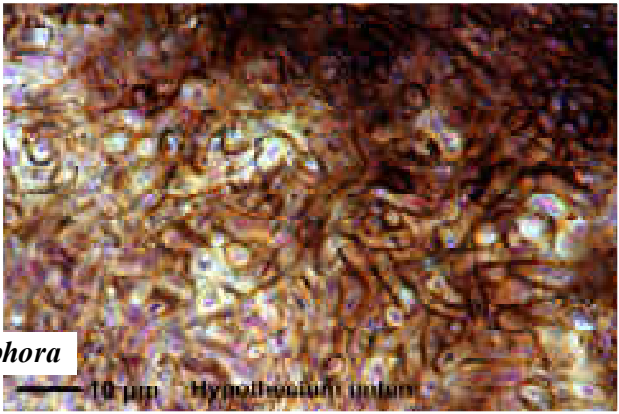
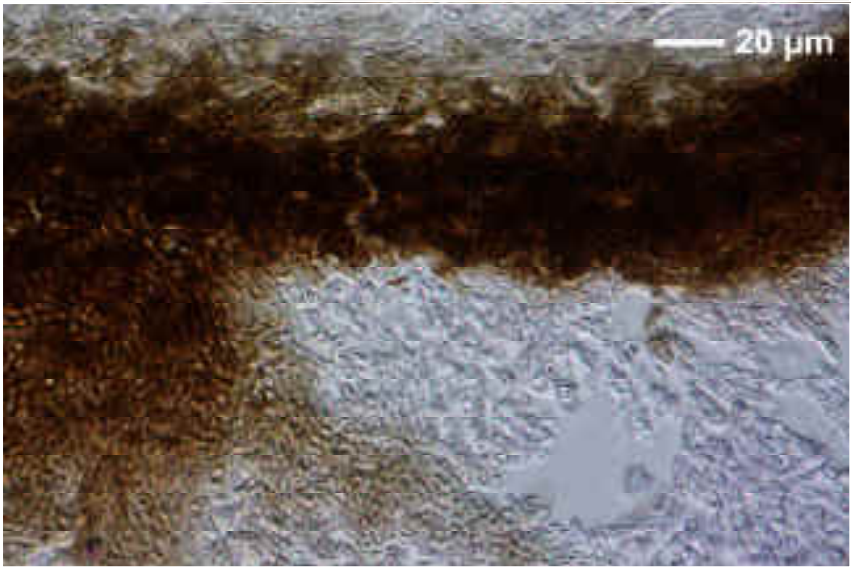
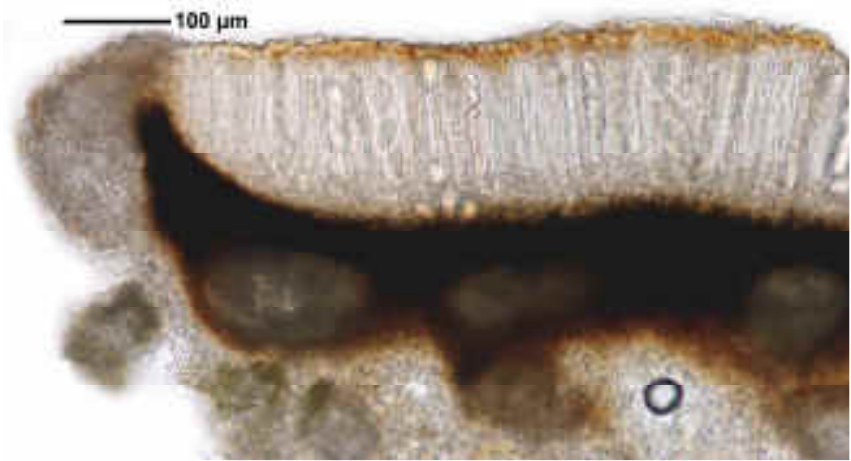




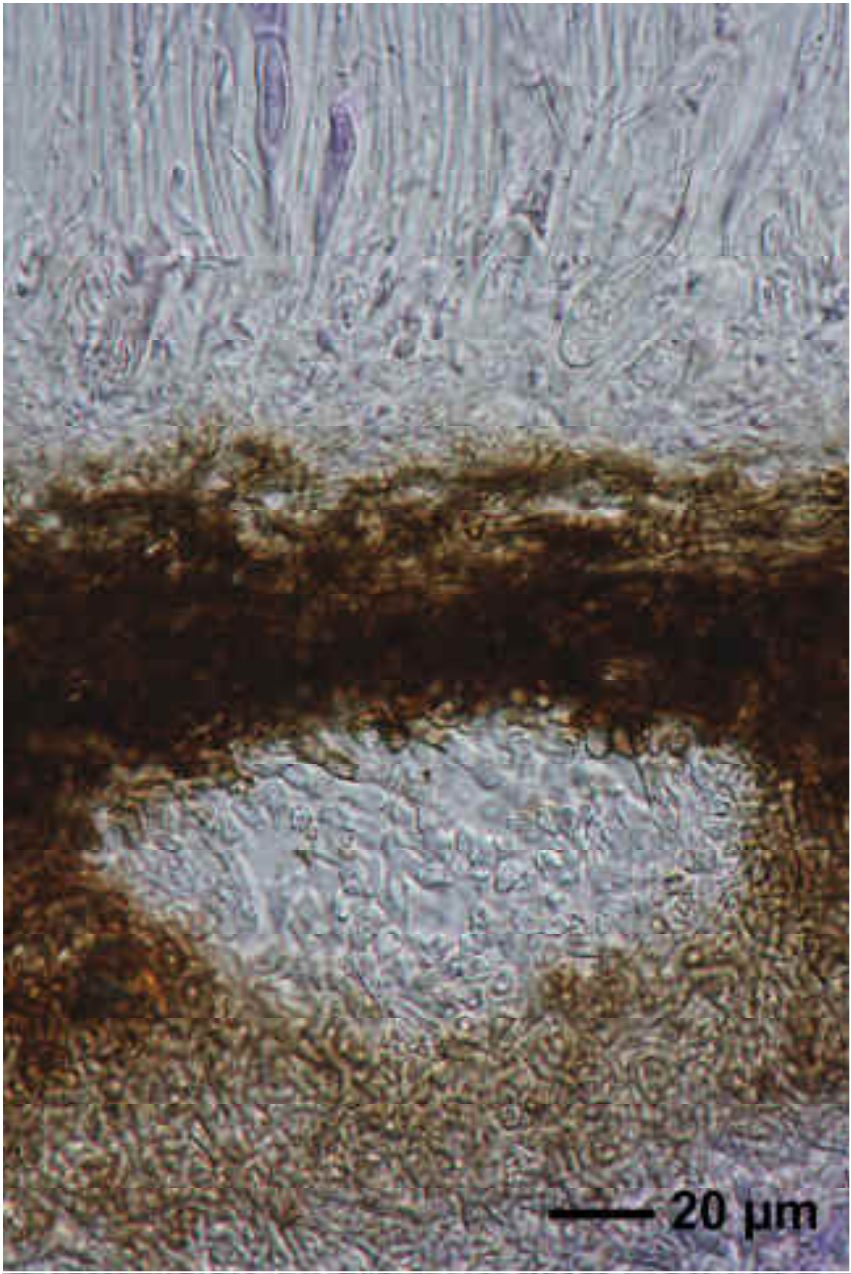
Malmidea corallophora



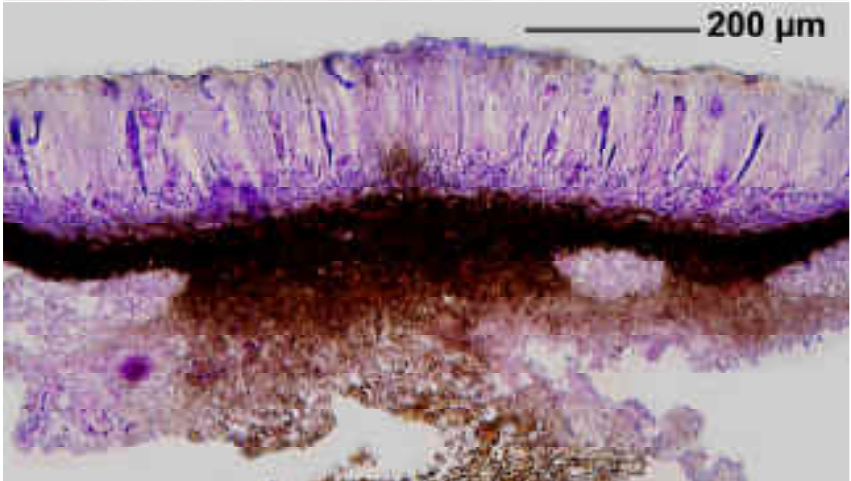
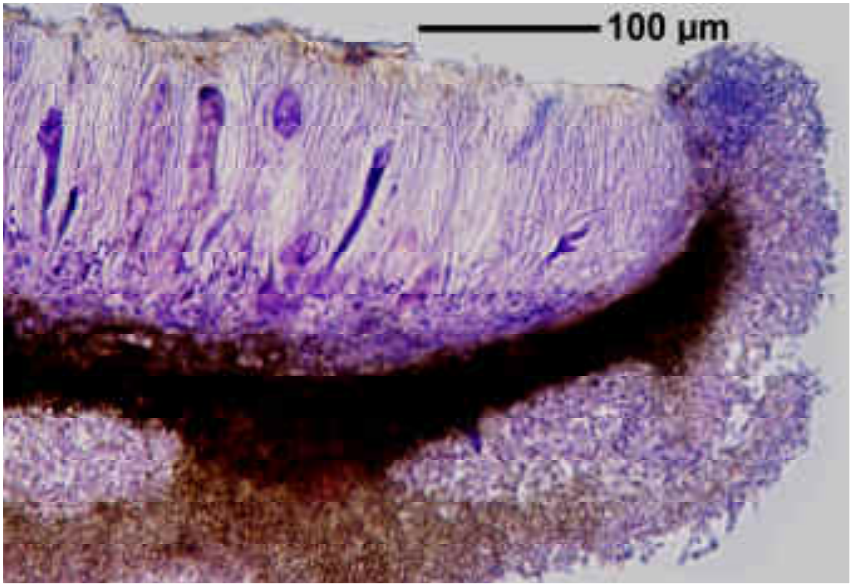
Malmidea corallophora



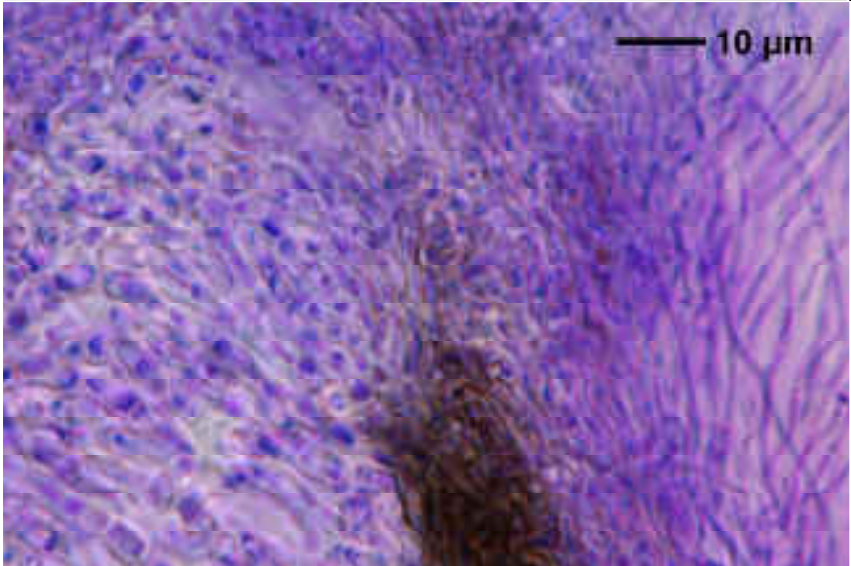
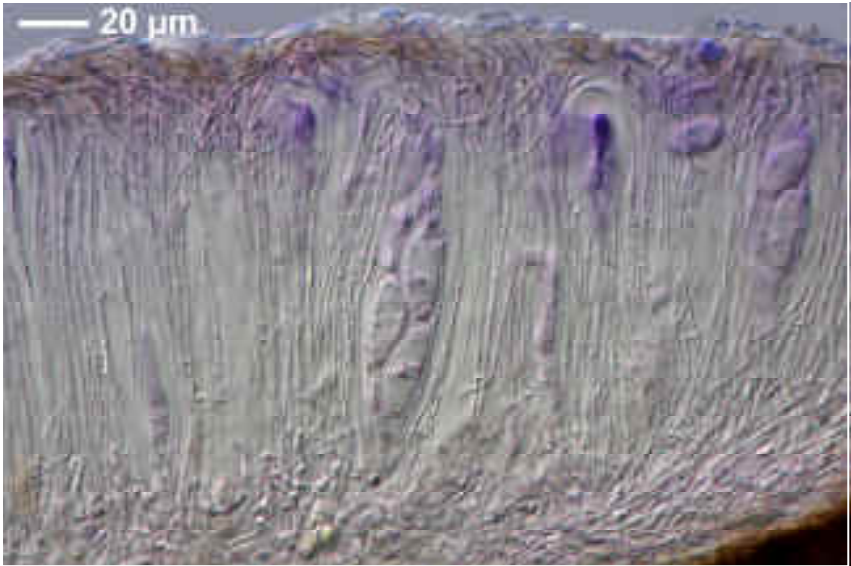
Malmidea corallophora



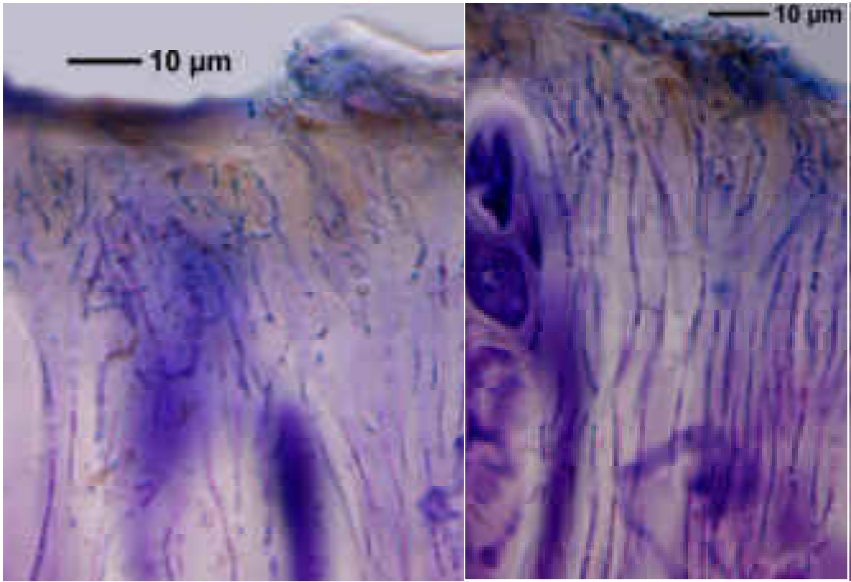
Malmidea corallophora



Malmidea corallophora



Malmidea corallophora



Malmidea corallophora