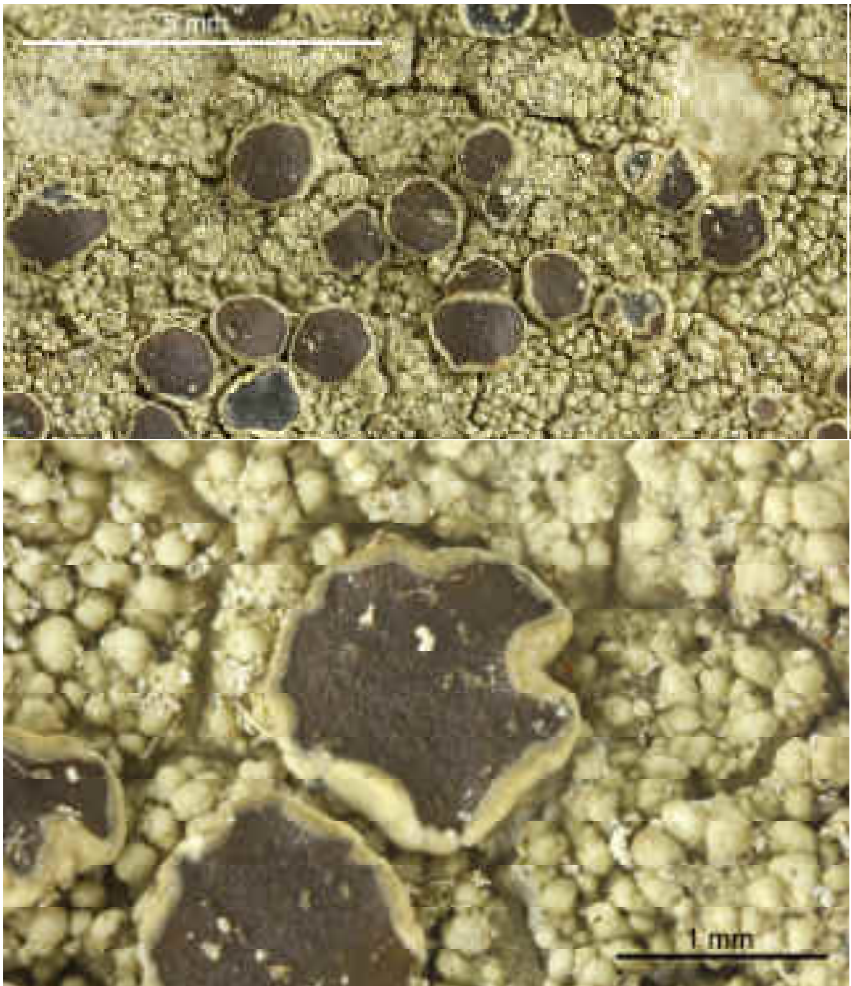
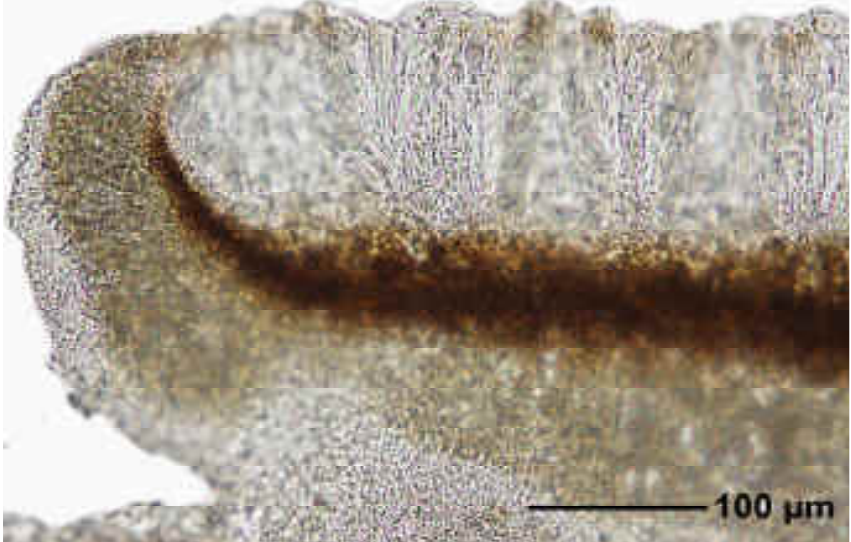
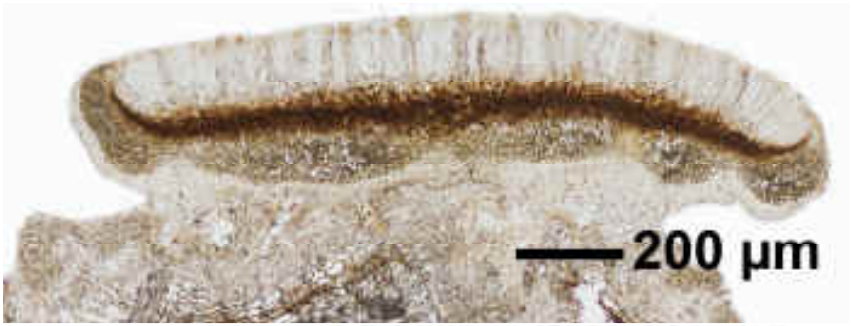


Malmidea subgranifera (Kalb & Elix) Kalb & Elix
[= *Malcolmiella subgranifera* Kalb & Elix]

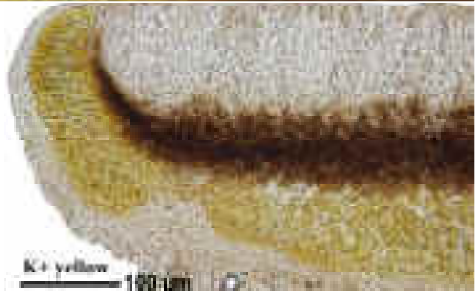
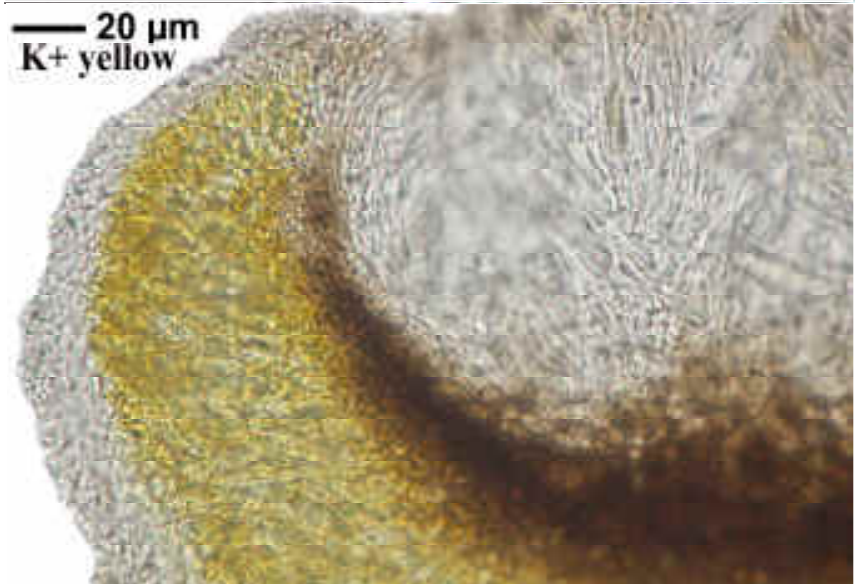
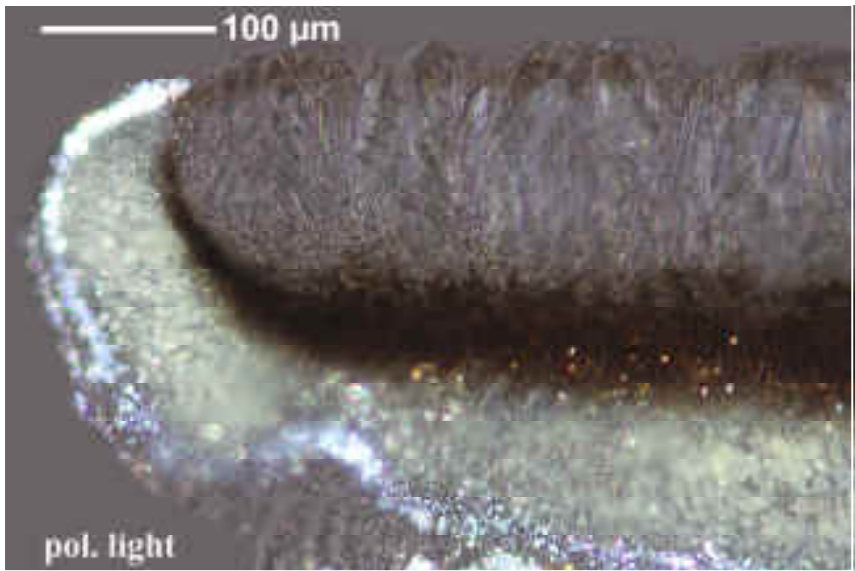
Thallus corticolous, with globose, 0.1-0.2 mm large isidia. Apothecium margin without algae. Hypothecium dark brown. Medulla white, K+ yellow. Ascospores hyaline, (11-)13-18 x (7-)10-12 μm , simple, (6-)8/Ascus (= main difference from *Malcolmiella psychotrioides*). Chemistry: atranorin, xantholepinon G (maj), C, F, H, I, J, K, L. Lit.: Kalb Lichenes Neotropici 555, Kalb et al. (2011).

[9558], Thailand, Bergdorf der Akha in der Nähe von Chiang Saen, 20°06.275' N, 99°37.524' E, 700 m. Leg. Schumm 31.03.2002, det. K. Kalb 2009.

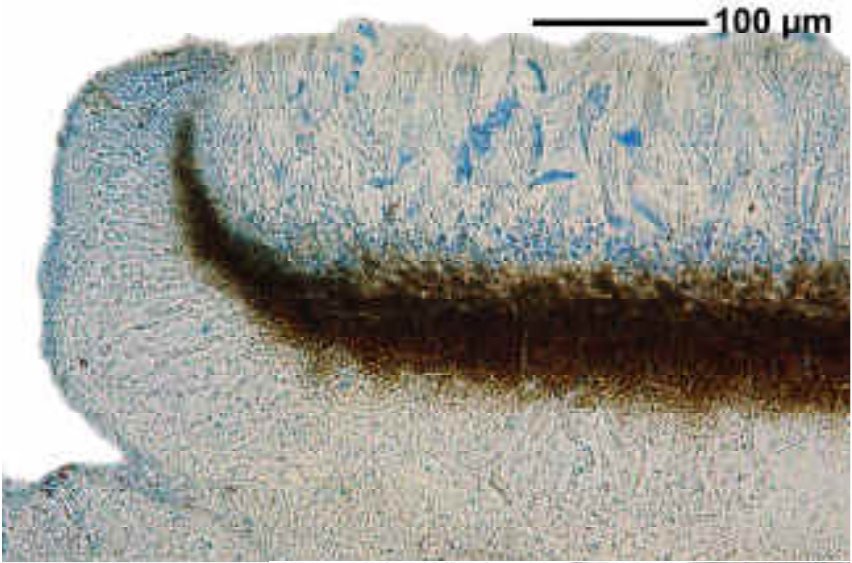




Malmidea subgranifera



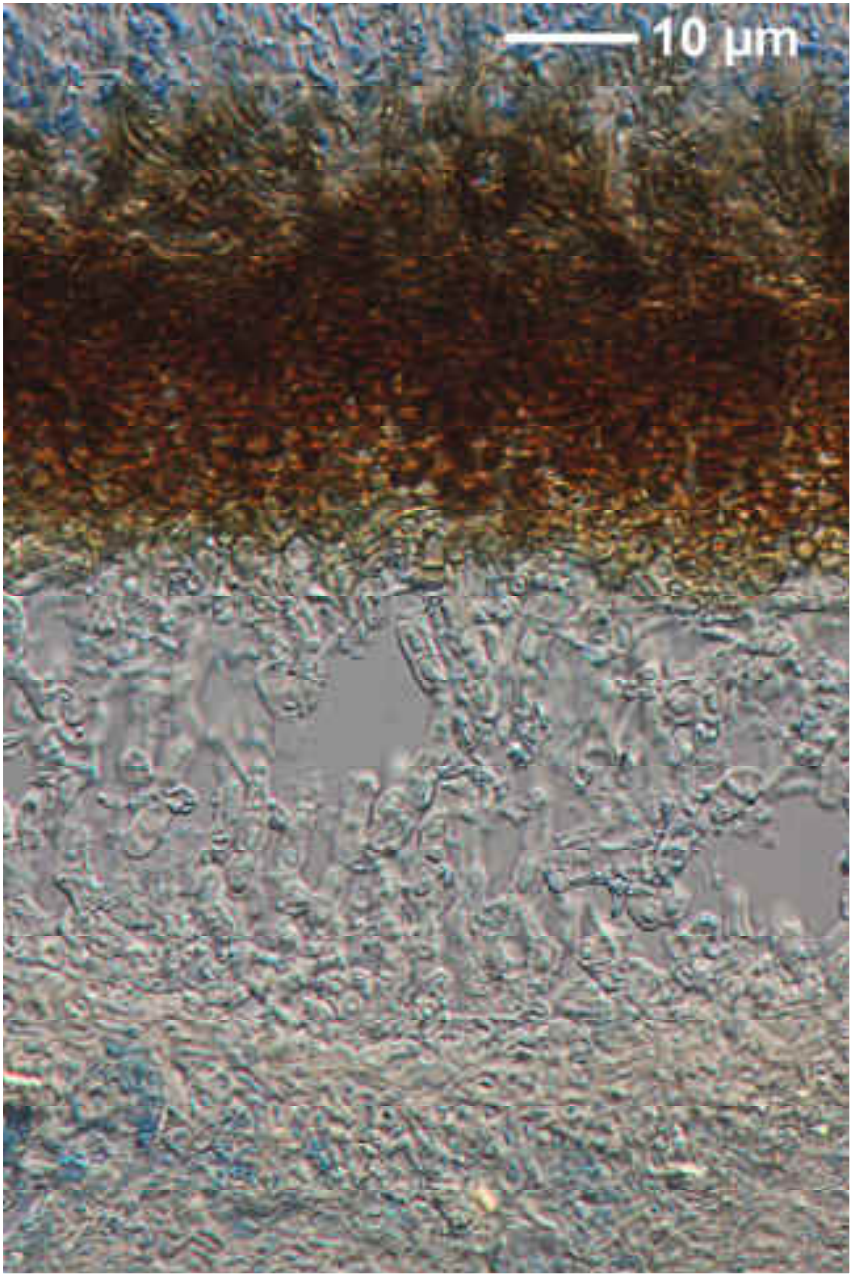
Malmidea subgranifera



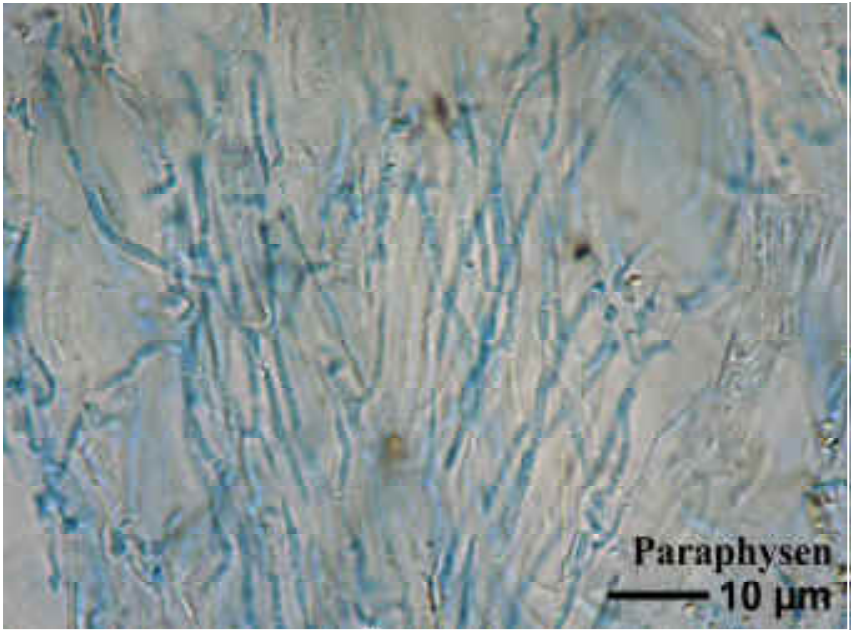
20 μm



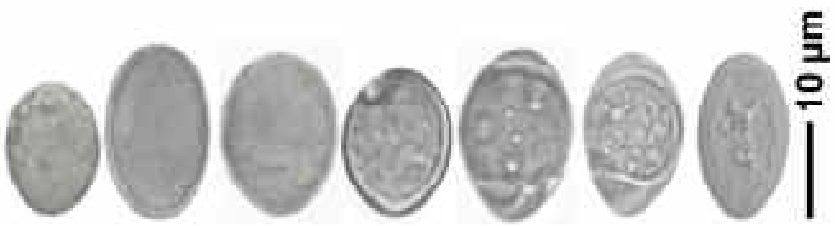
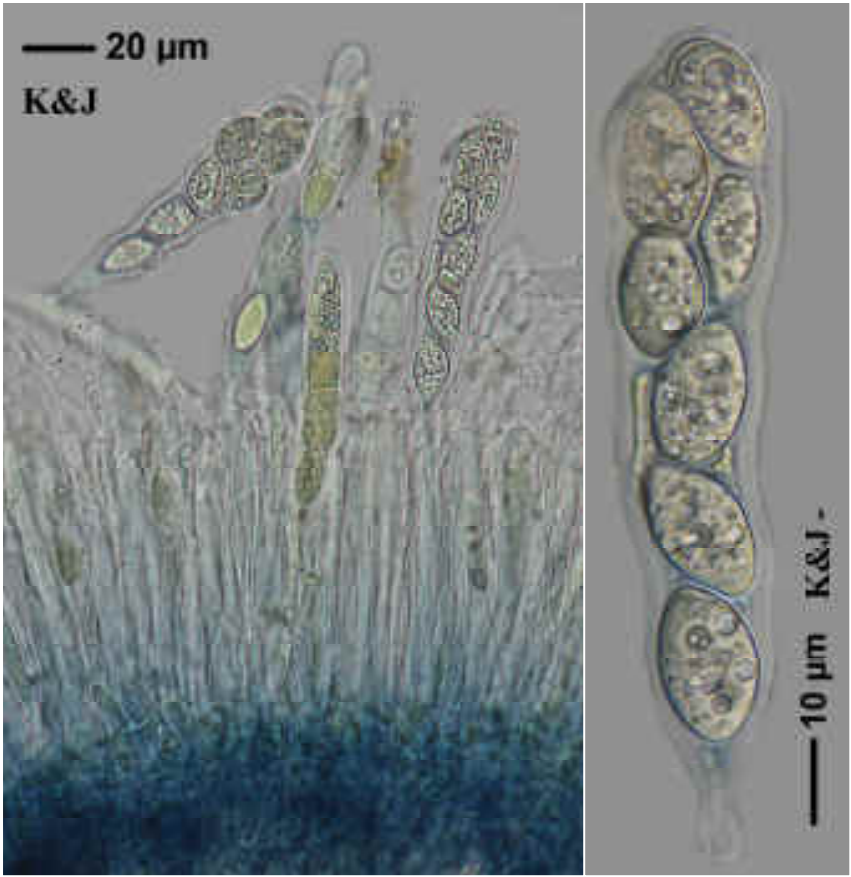
Malmidea subgranifera



Malmidea subgranifera



Malmidea subgranifera



Malmidea subgranifera