

*Megalospora halei* Sipman

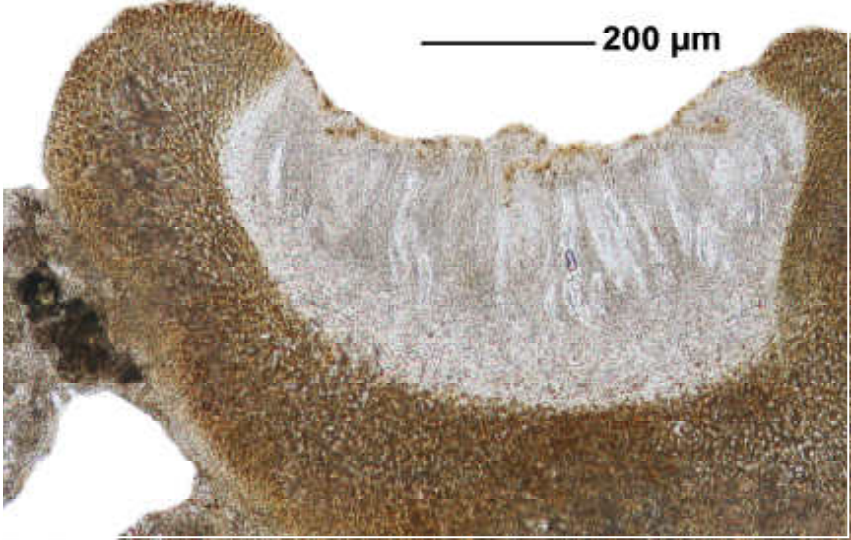
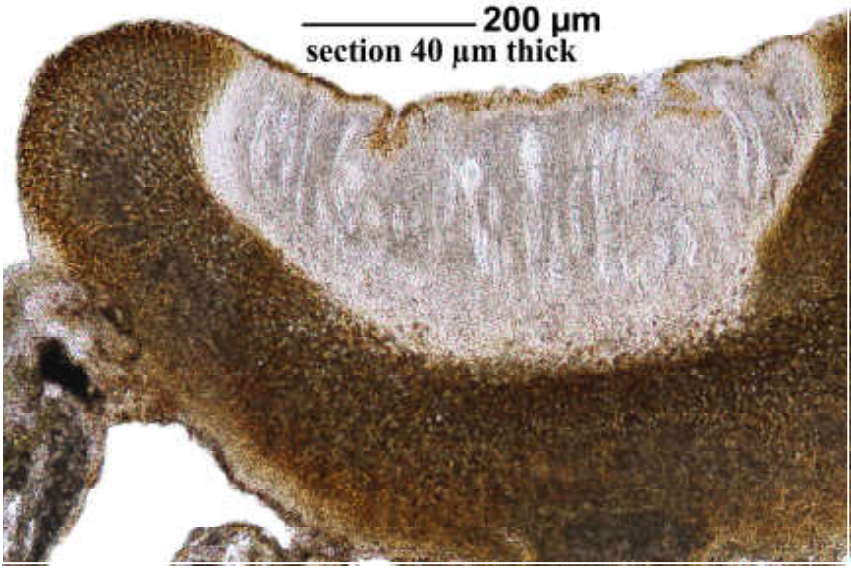
Thallus with isidia. Excipulum with many crystals, K+ intense yellow, soluble in acetone and methylene glycol, yellow drops in hot lactophenol. Hymenium inspersed, appr. 300 µm. Ascospores hyaline, straight, 1/ascus, 7-septate, c. 100 x 29 µm. Chemistry: Thallus P-, K+ sordid yellow, KC+ intensely lemon yellow. Lit. Sipman (Bibl. Lichenol. 18, 1983)

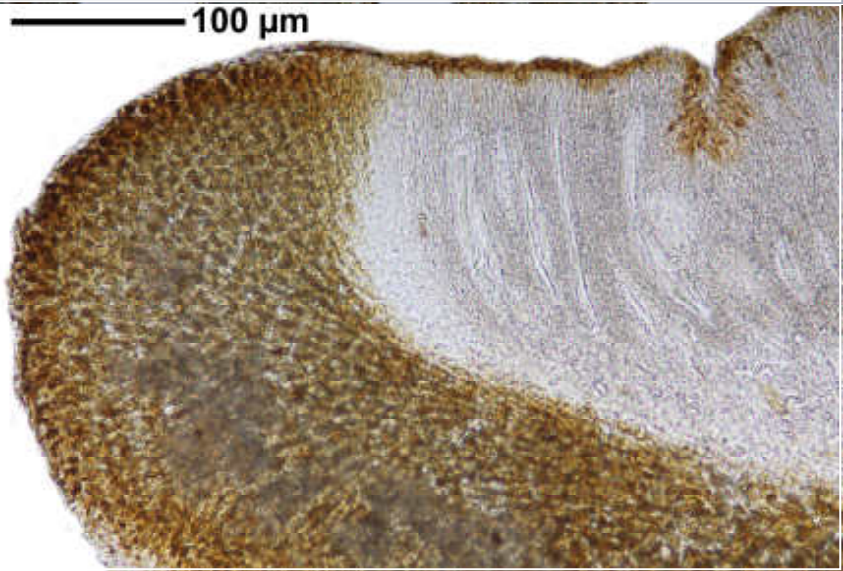
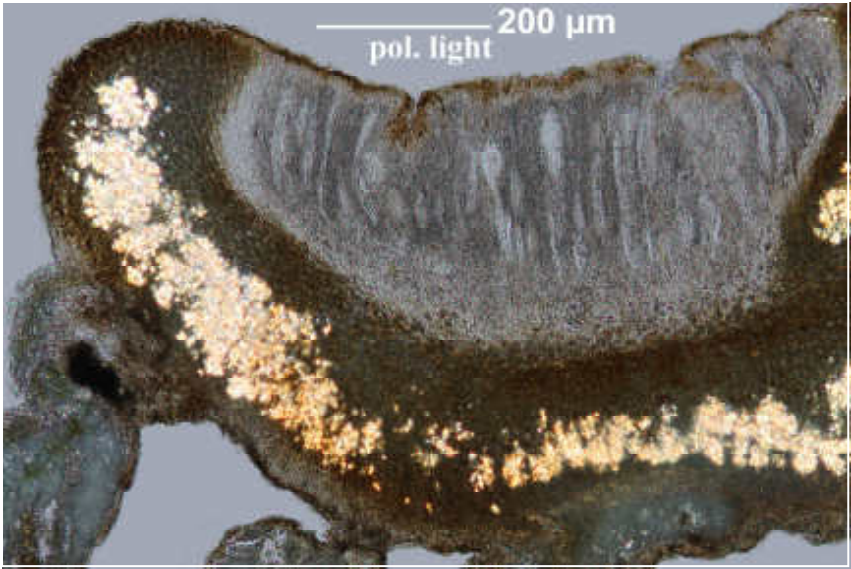
[15213], La Reunion, Picknickplatz Col de Bellevue, südwestlich La Plaine des Palmistes, nebelfeuchter Wald mit Baumfarnen, 21,16580° S, 55,5903° E, 1610 m. Leg. Schumm & Frahm 09.09.2009, det. Schumm 2011.



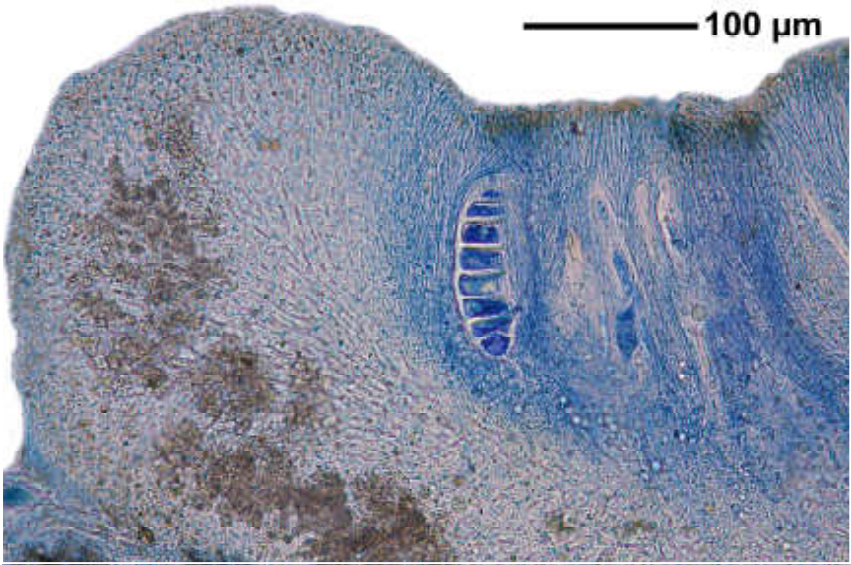


*Megalospora halei*

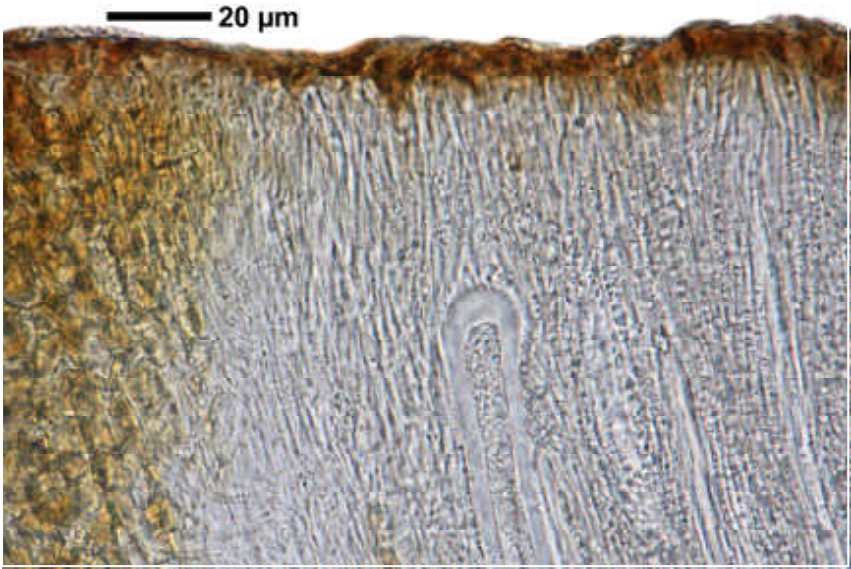




*Megalospora halei*



*Megalospora halei*



*Megalospora halei*