

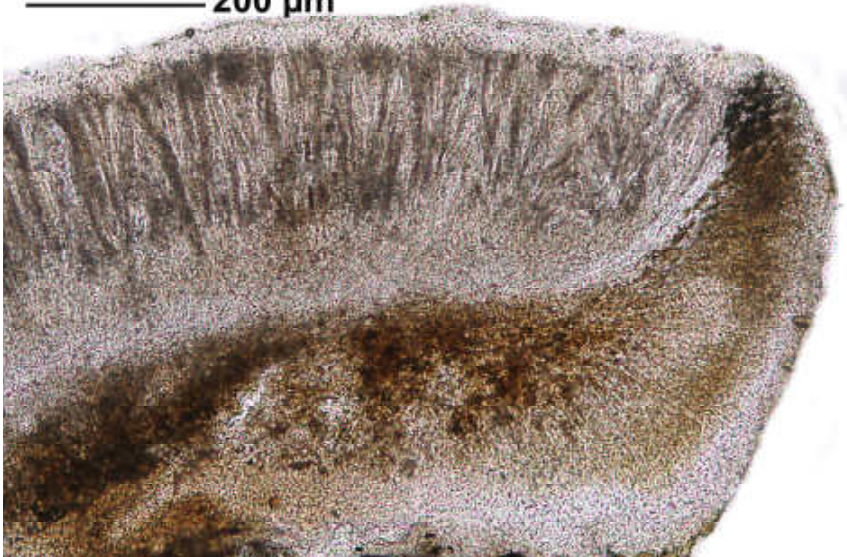
*Megalospora tuberculosa* (Fée) Sipman

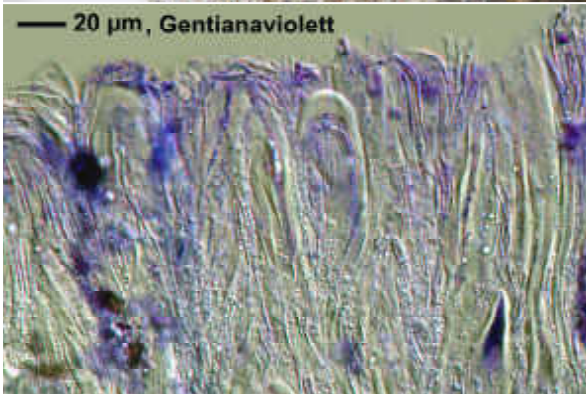
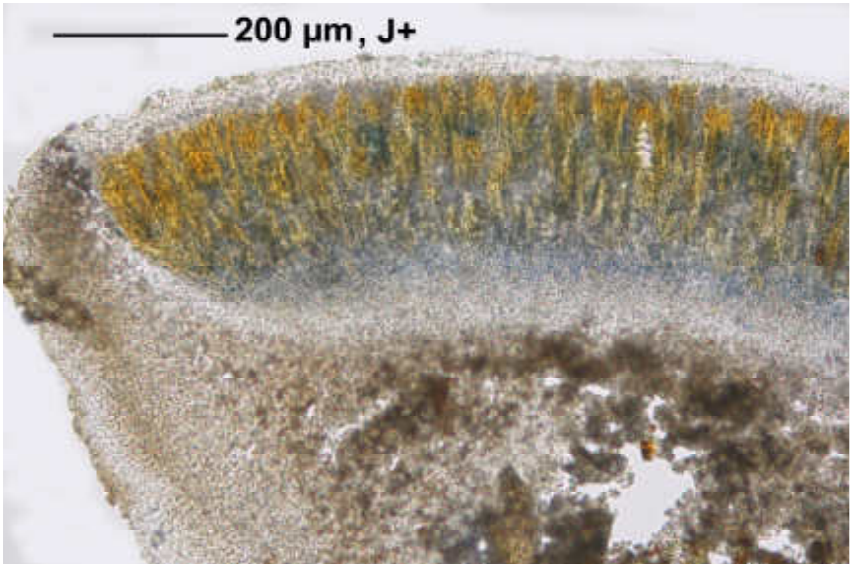
Excipulum without algae, K-. Hymenium densely inspersioned, J+ first bluish then browned. Asospores c. 1/ascus, transversely 6-8(-11) septate, straight, 70-140 x 25-35  $\mu\text{m}$ . Thallus P-.

[15388], La Reunion, Foret de Bébou, Sentier de Piton Bébou; 21,12860° S, 55,56962° E, 1300 m. Leg. Schumm & Frahm 12.09.2009, det. Schumm 2009.

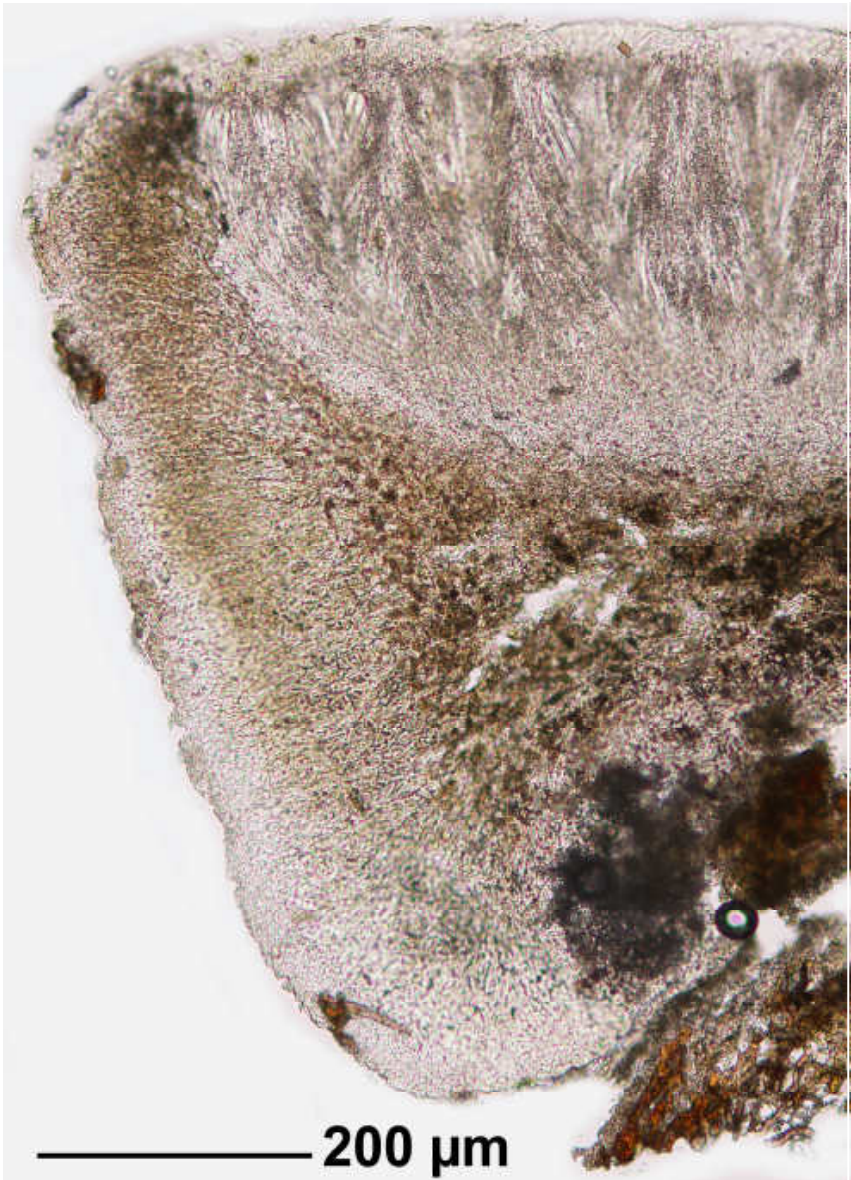


200  $\mu\text{m}$





*Megalospora tuberculosa*



*Megalospora tuberculosa*