

Mycobilimbia sabuletorum (Schreb.) Hafellner

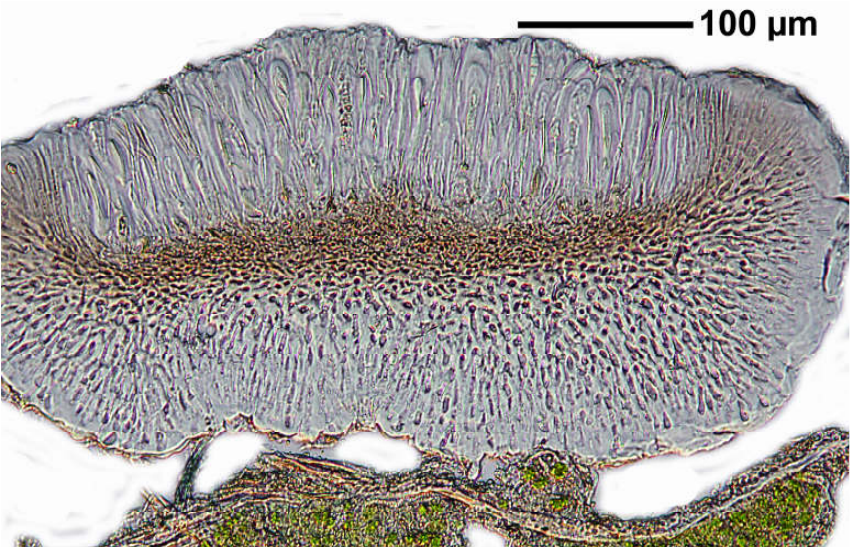
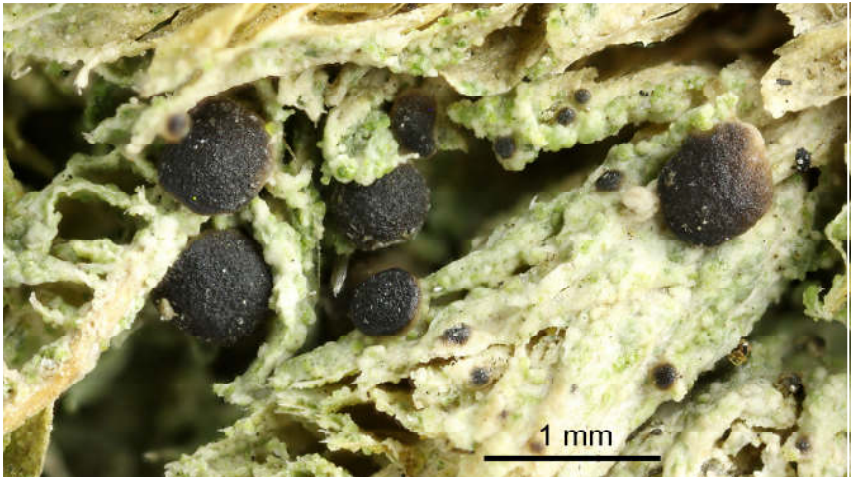
[= *Bacidia sabuletorum* (Schreb.) Lettau]

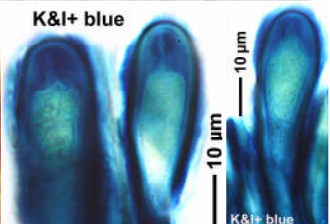
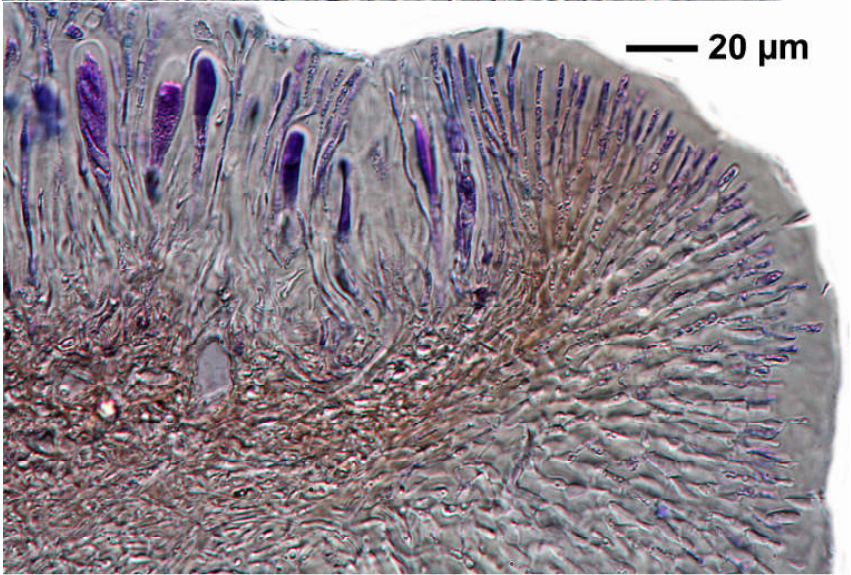
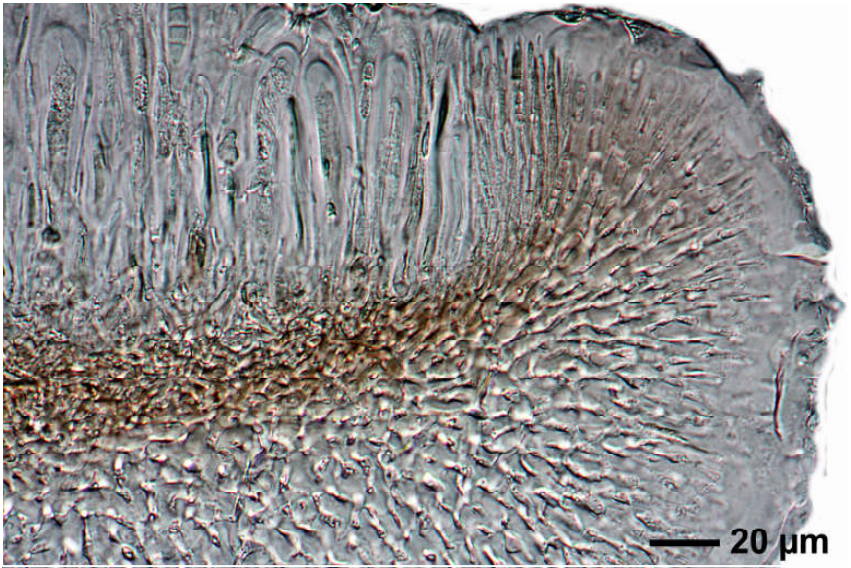
[= *Bilimbia sabuletorum* (Schreb.) Arnold]

[= *Myxobilimbia sabuletorum* (Schreb.) Hafellner]

Sporen 8/Ascus, hyalin, 3-5-septiert, 18-40 x 5-8 μm . Hymenium I+ rot, K&I+ blau.

[16467], Germany, Baden-Württemberg, Kreis Göppingen, bei der Ruine Helfenstein oberhalb Geislingen, an Moosen über Kalkfelsen im Wald. 48,61613° N, 9,85064° E, 644 m. Leg. et det. Schumm





Mycobilimbia sabuletorum