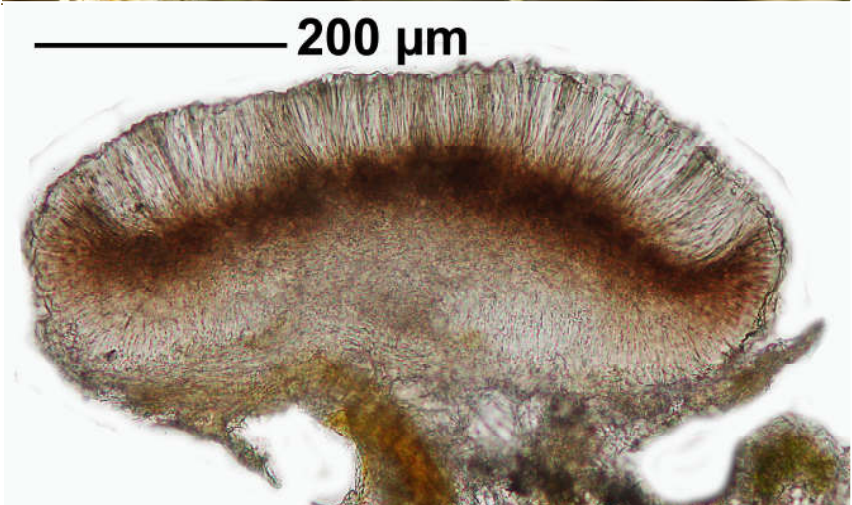
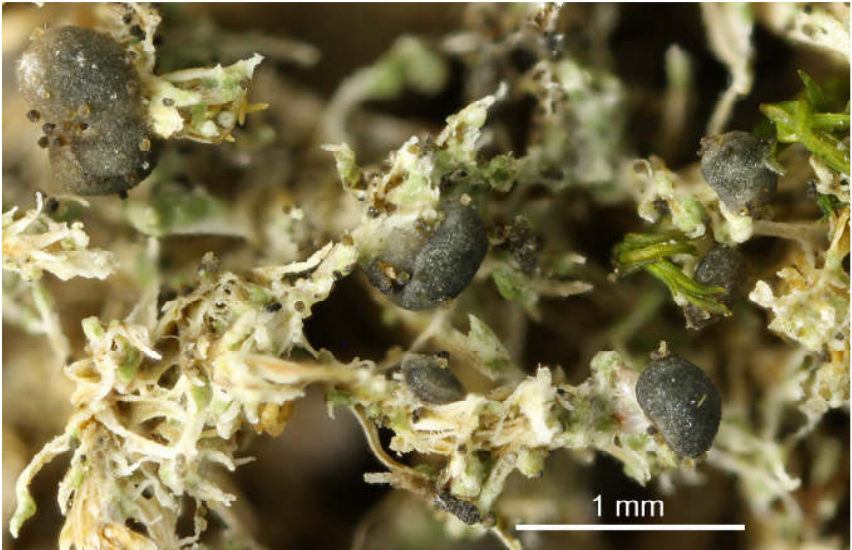
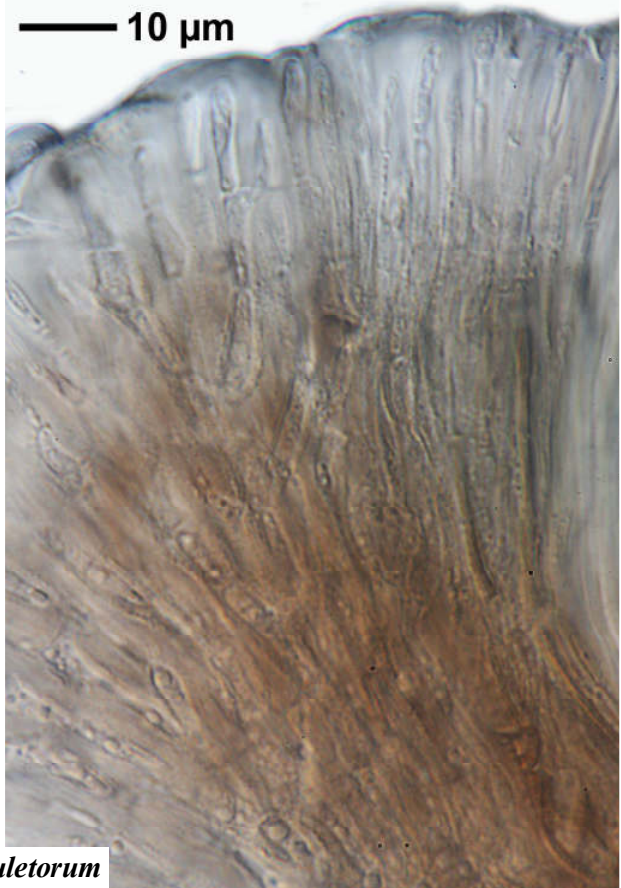
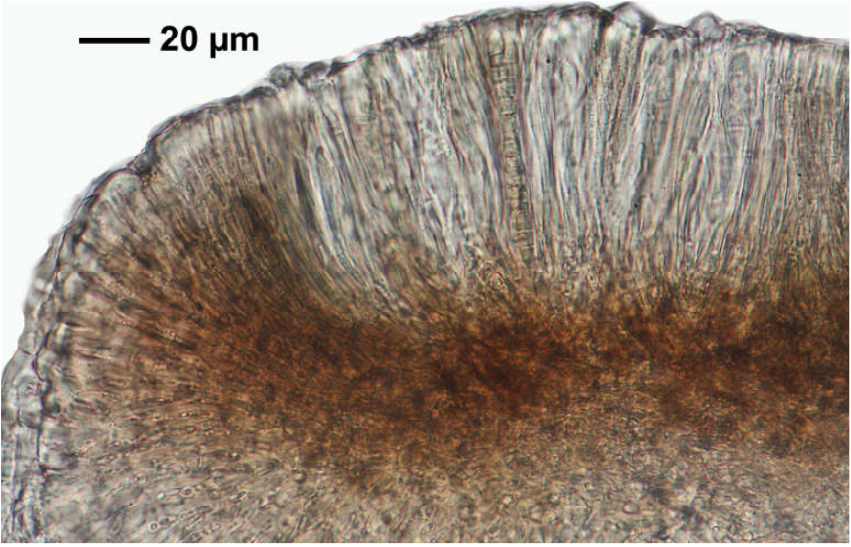


Mycobilimbia sabuletorum (Schreb.) Haf.
[= *Bilimbia sabuletorum* (Schreb.) Arnold]

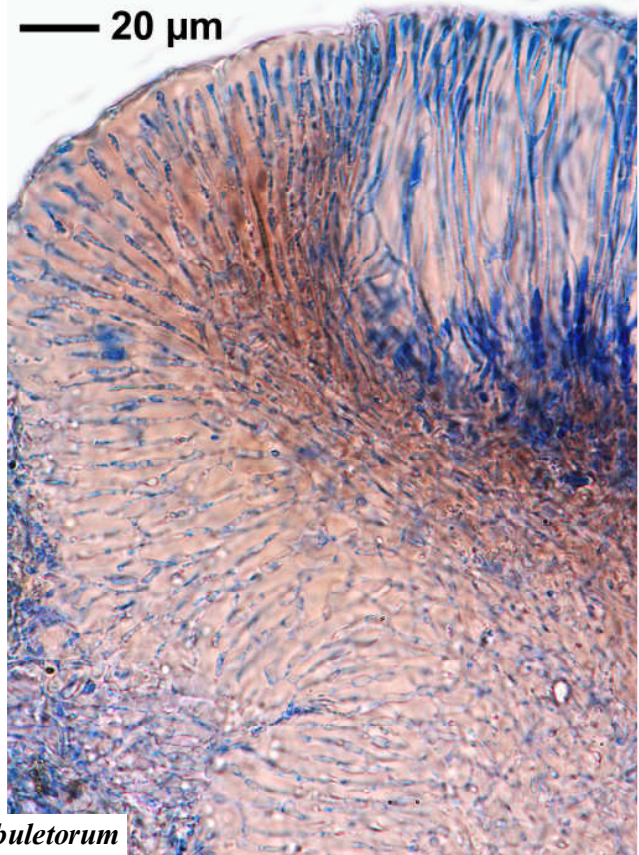
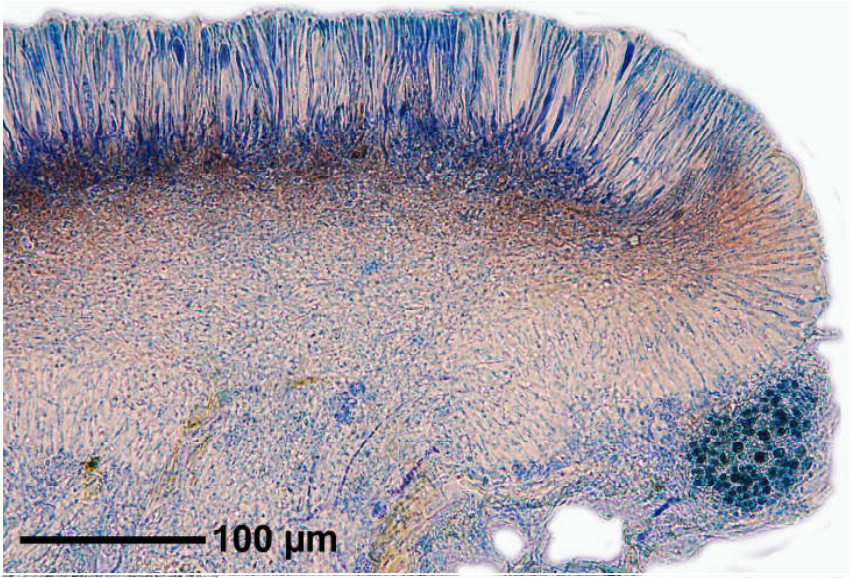
Hymenium hell, ca. 90 μm . Hypothecium braun bis bräunlich, ca 60 μm . Sporen haylin, 3-septiert, feinwarzig, ca. 18 x 5 μm .

[16826], Germany, Baden-Württemberg, Schwarzwald-Baar-Kreis, an der Straße zwischen Triberg und Hornberg beim Himmelsreichtunnel. 48,170130° N, 8,23420° E, 465 m. An Granitfelsen über Moosen. Leg. et det. Schumm 07.07.2010.





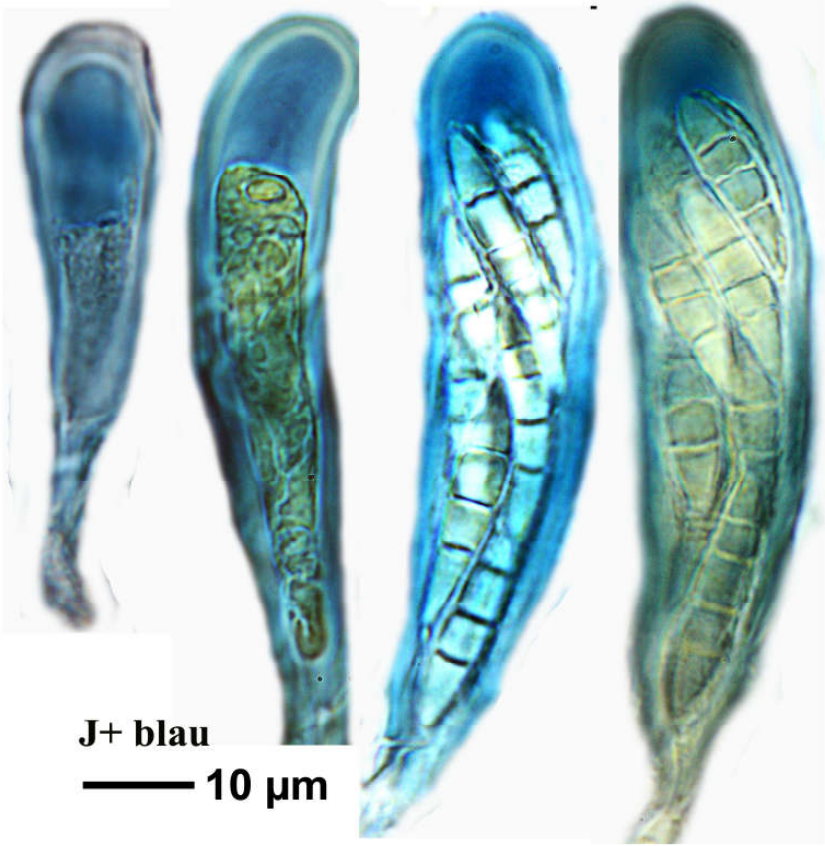
Mycobilimbia sabuletorum



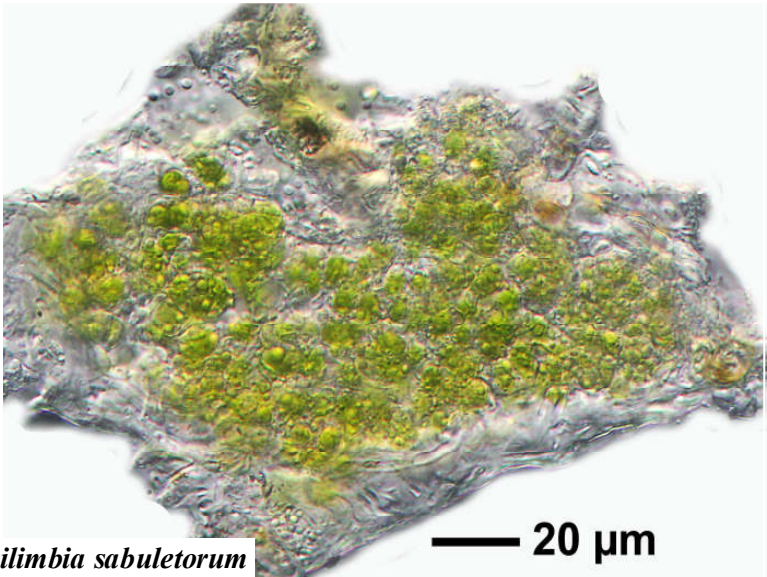
Mycobilimbia sabuletorum



Mycobilimbia sabuletorum



J+ blau
— 10 μm



Mycobilimbia sabuletorum

— 20 μm