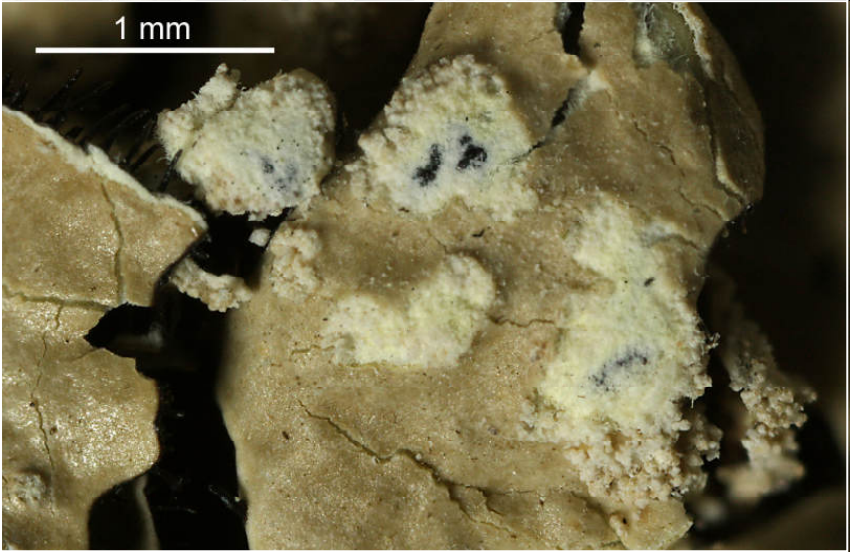
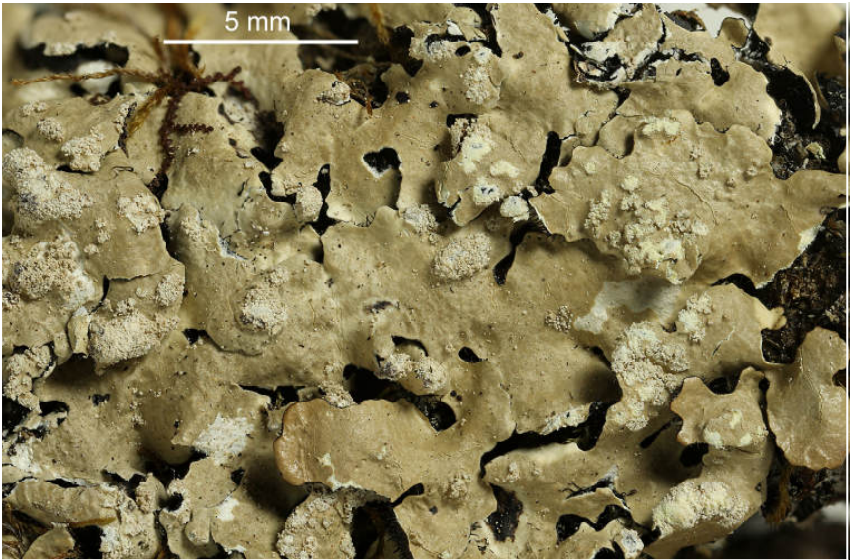


*Myelochroa aurulenta* (Tuck.) Elix & Hale

Thallus green-gray, adnate. Lobes 2-4 mm wide, sinuous in the axils, shortly ciliate. Isidia absent. Soralia coarse pustules, becoming broad and diffuse. Soredia farinose to granular. Medulla white to pale yellow, under the soralia yellow-orange. Lower surface black, densely rhizinate, marginally with 1-5 mm wide brown zone. Chemistry: cortex K+ yellow, C-, KC-, P-; medulla K- or somewhat more yellowish, C-, KC-, P-; atranorin, zeorin, leucotylic acid, pigmented parts with secalonic acid A. Corticolous, pantropical.

[9981], USA, Wisconsin, Vilas County, Town of Arbor Vitae, Northern Highland State Forest, Trout Lake Conifer Swamp State Natural Area, just north of County Hwy. M at east end of Perch Lake, 46°00'52" N, 89°39'26" W, 466 m, mixed conifer swamp. Leg. Robert S. Egan 28.04.2002 (EL-15,894), det. Egan.





*Myelochroa aurulenta*



*Myelochroa aurulenta*