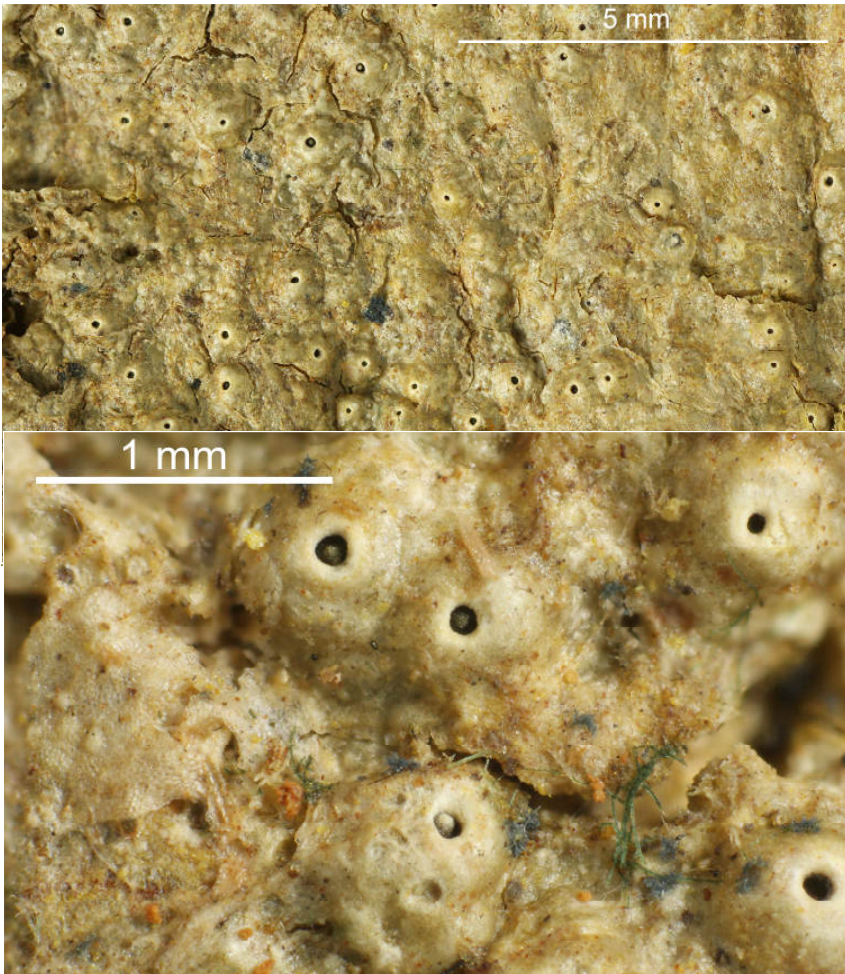
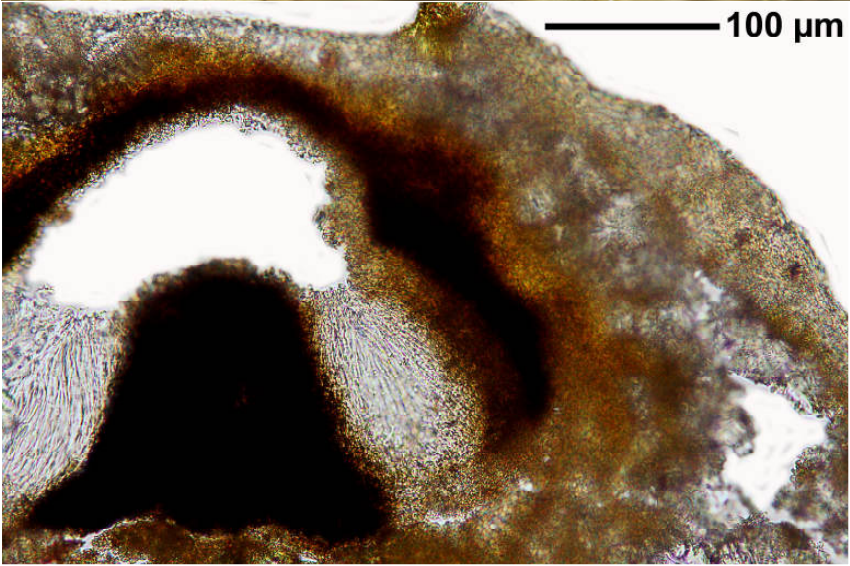
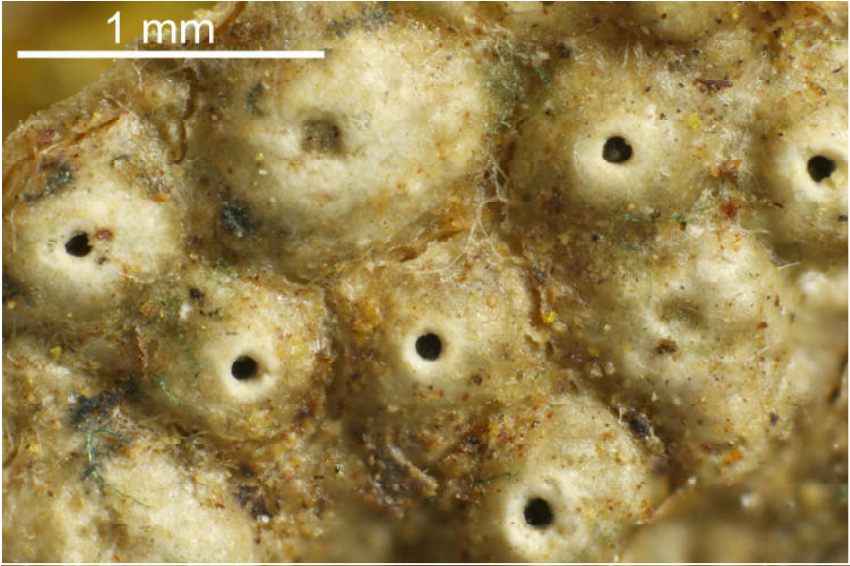


Ocellularia ascidioidea Hale

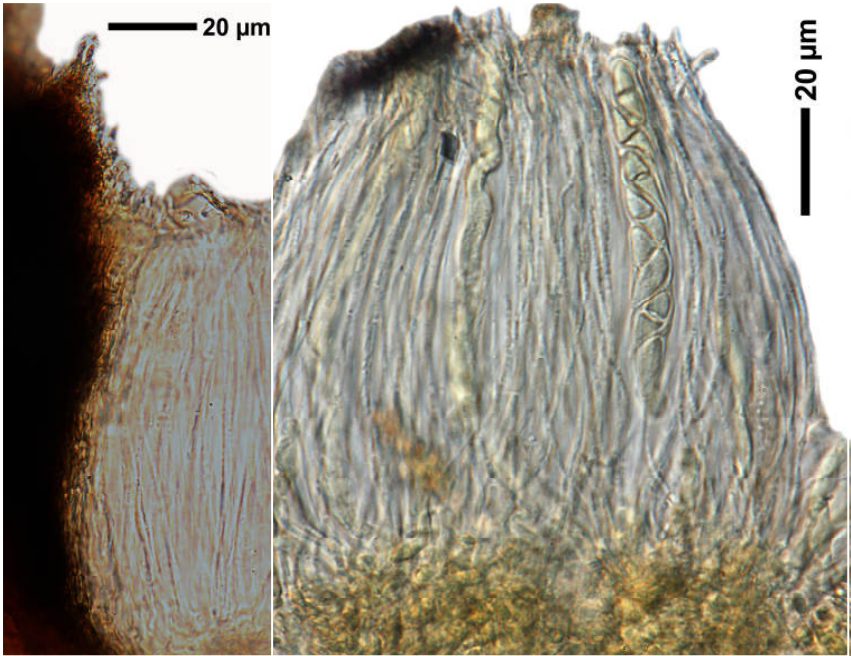
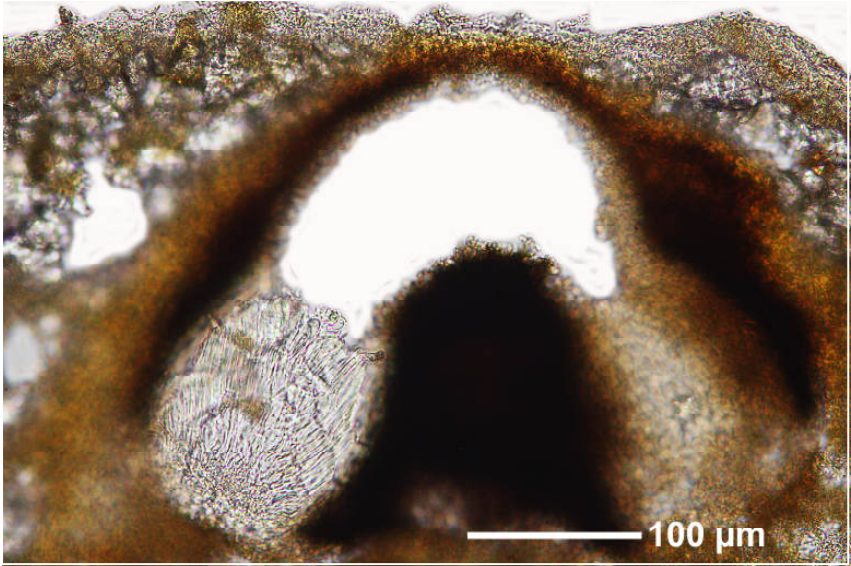
Thallus ochre, continuous. Apothecia erumpent, 0.5-0.7 mm wide. Porus 0.1 mm wide. Excipulum marginally carbonized, with carbonized columella. Periphyses absent, hymenium not interspersed. Ascospores hyaline, transverse septate, 8/ascus, 8-9 loculate, J+ blue-violet, 26-28 x 7-8 μm . Chemistry: TLC nil (only a weak grey spot remaining on the baseline in A,B',C), Medulla white, P-.

[7791], Philippinen, Leyte, Prov. Leyte, Weg vom Gipfel des Mt. Agipo (10°46.729' N, 124°49.781' E, 885 m) nach Kadwa-An (10°46.249' N, 124°48.167' E, 195 m); bei 870 m. Leg Schumm 18.08.2000, det. Schumm, test. Sipman 2012.

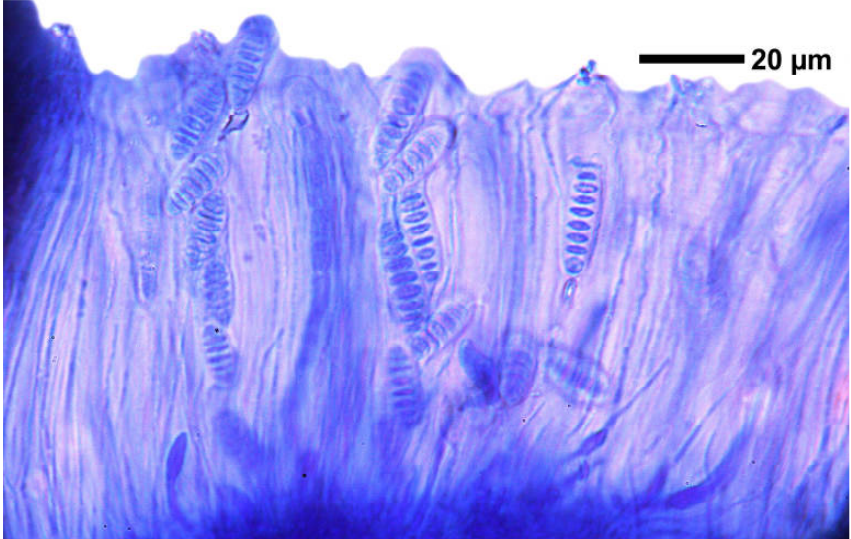
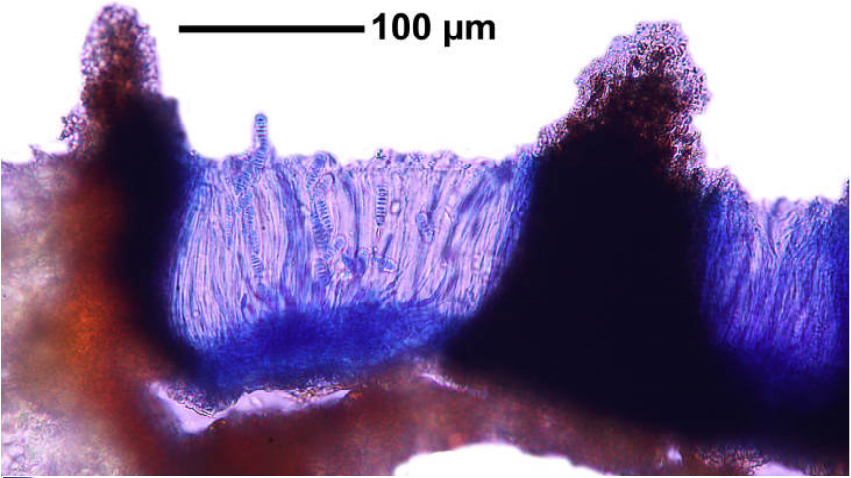




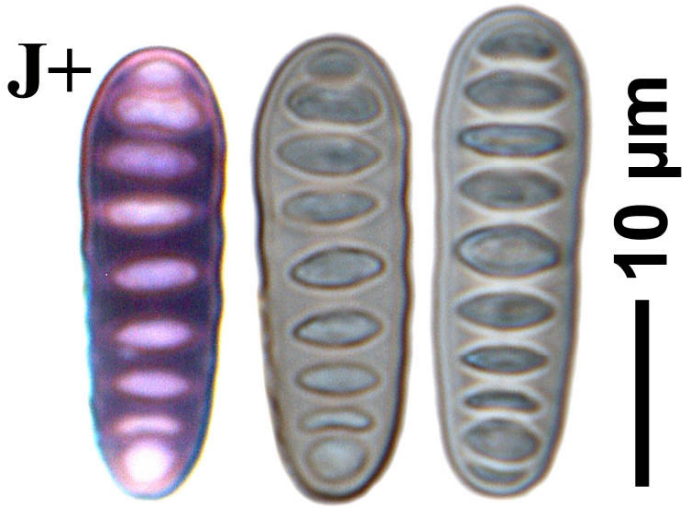
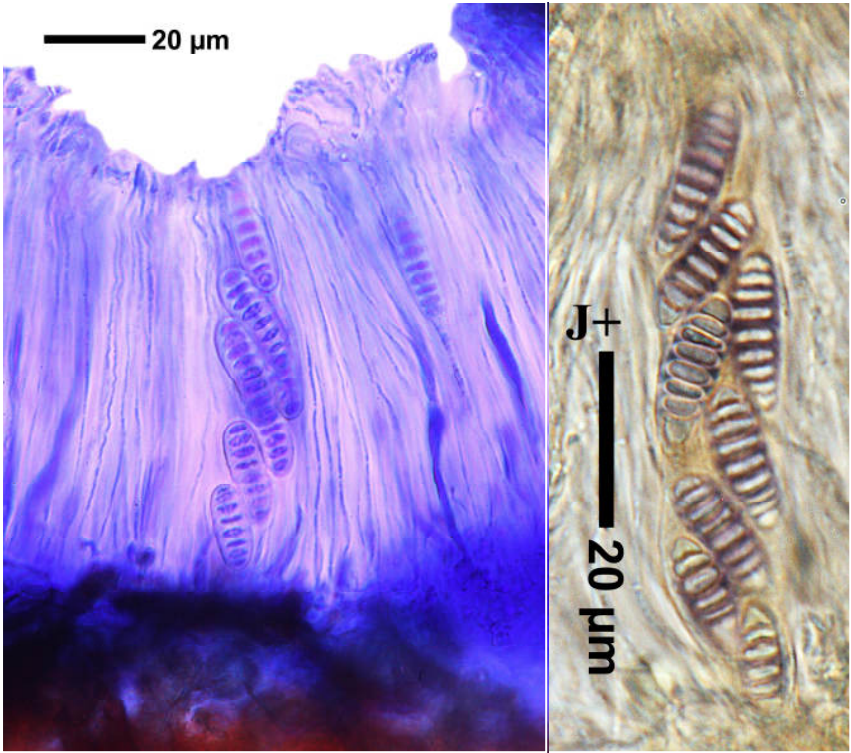
Ocellularia ascidioidea



Ocellularia ascidioidea



Ocellularia ascidioidea



Ocellularia ascidioidea