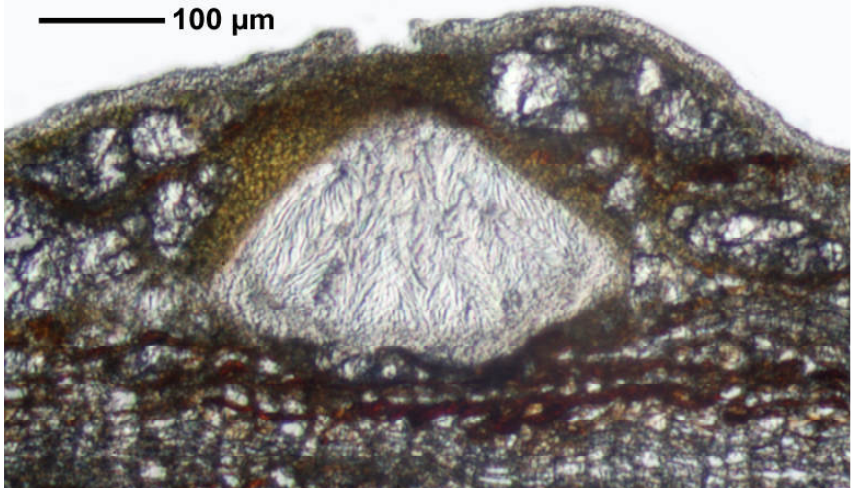
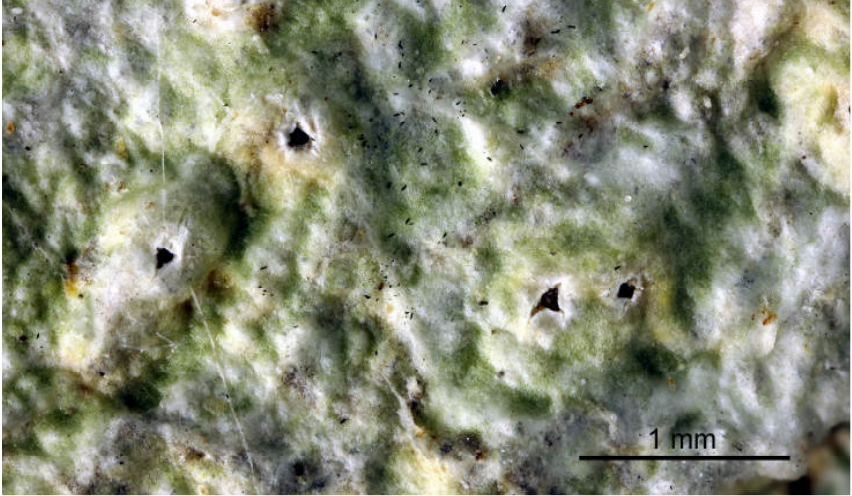
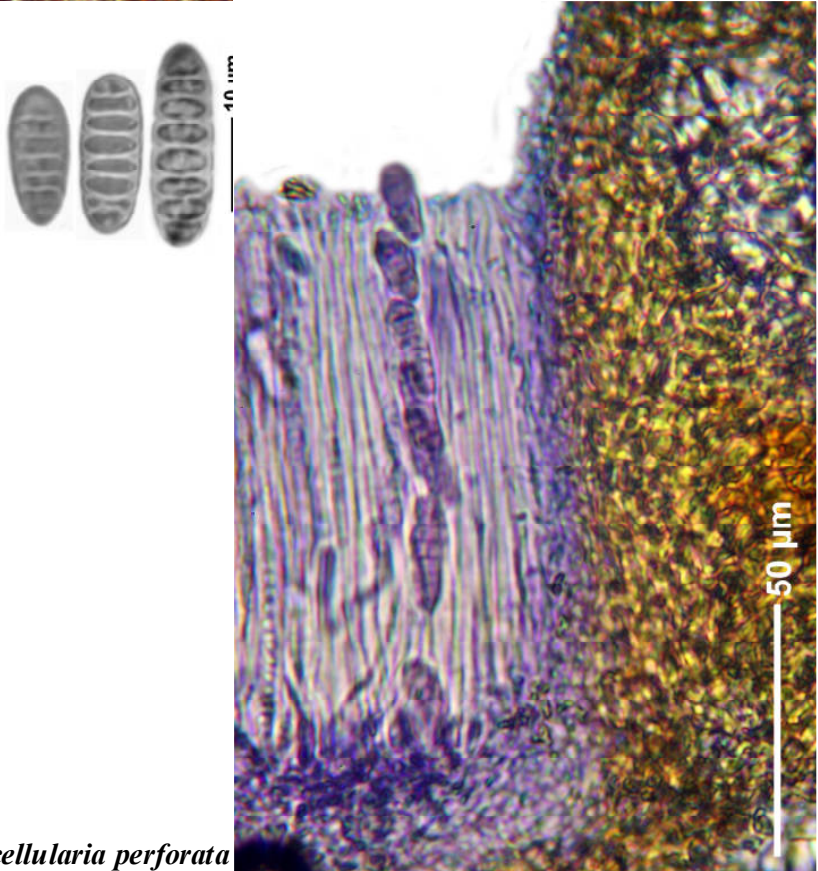
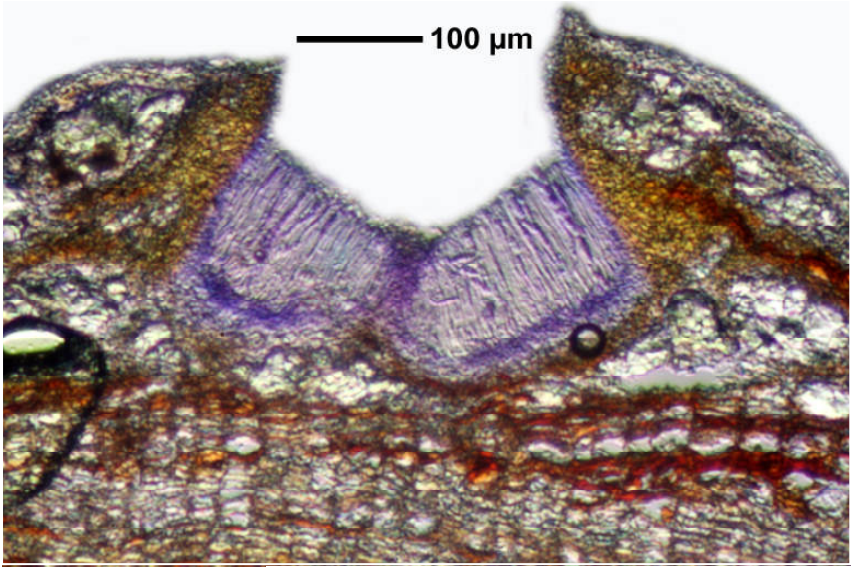


*Ocellularia perforata* (Leight.) Müll.Arg.

Spores hyaline, (4-)8/ascus, (3-)7(-15)-septate, 17-23(-72) x 5-7(-11)  $\mu\text{m}$ , I+ bue; apothecium with small columella; proper exciple carbonised or not. Protocetraric acid (TLC), P+ red. Pantropical.

[14657], Seychellen, Mahe, Mahe Seychelloise National Park, Sentier de Casse Dent, Marc Aux Cochons Hiking Path, 4°39.234' S, 55°26.355' E, 390 m. Leg. Schumm & Frahm 10.10.2008, det. Aptroot 2008.





*Ocellularia perforata*