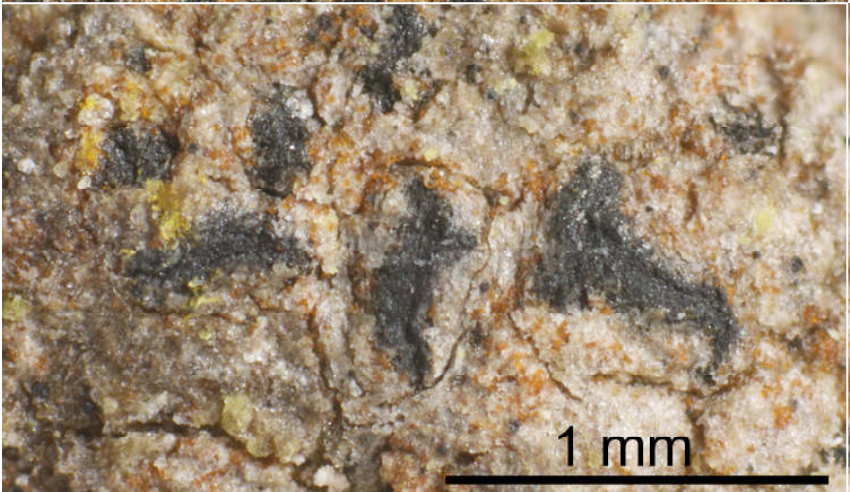
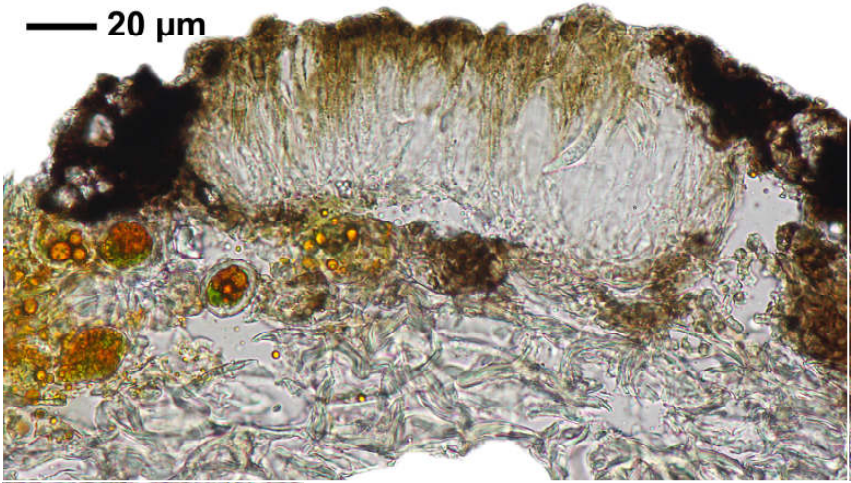


*Opegrapha rufescens* Pers.

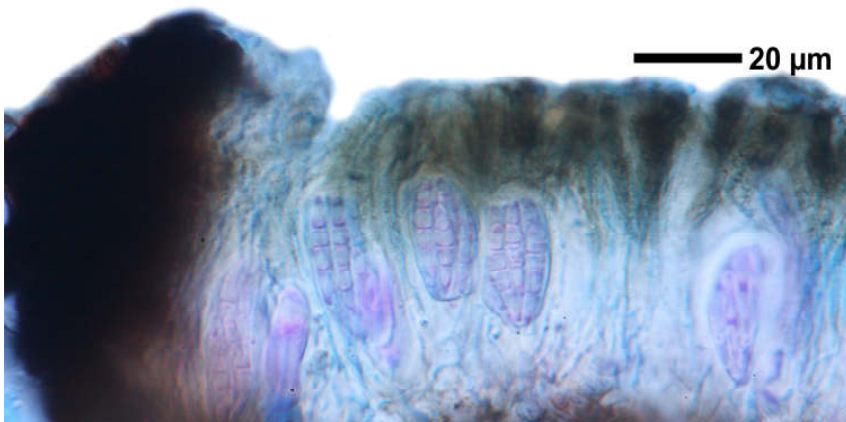
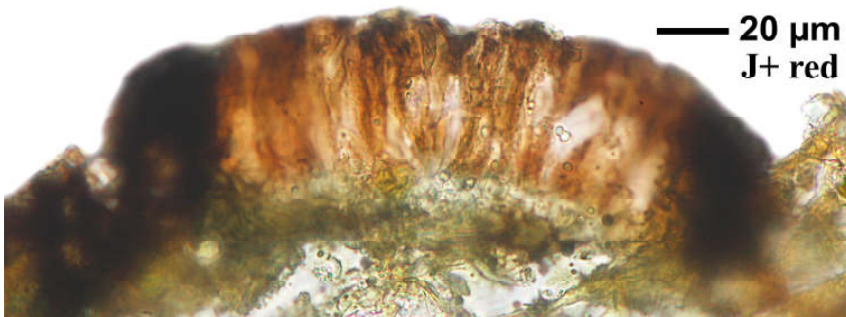
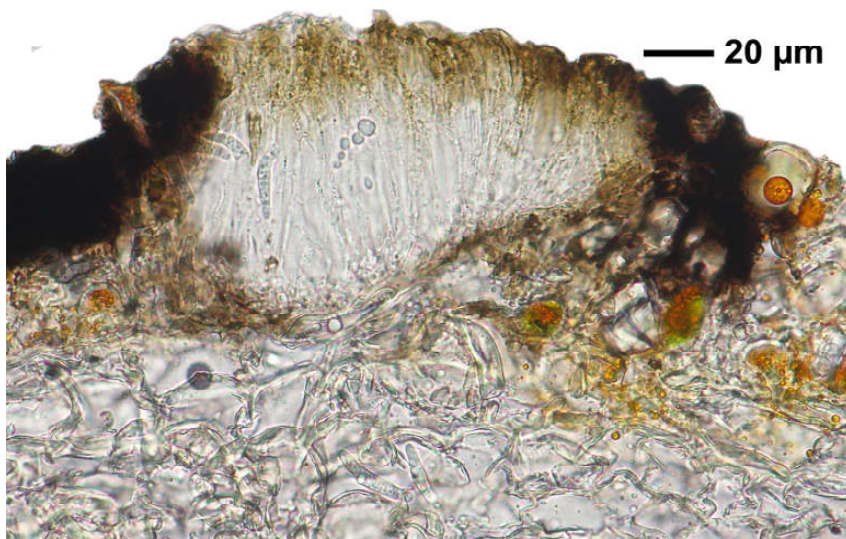
Thallus braun. Lirellen schwarz, unbereift, eingesenkt. Hymenium J+ rot. Sporen hyalin, 8/Ascus, 4-zellig, ca. 21 x 3 µm. Photobiont: *Trentepohlia*

[17977], Germany, Baden-Württemberg, Kreis Göppingen, zwischen Nassach und Oberberken, Waldweg zwischen Stärkerberg und Gaibhalden, 48.75491° N, 9.54289° E, 377 m, an Esche. Leg. Schumm 03.04.2012, det. Schumm 2012.

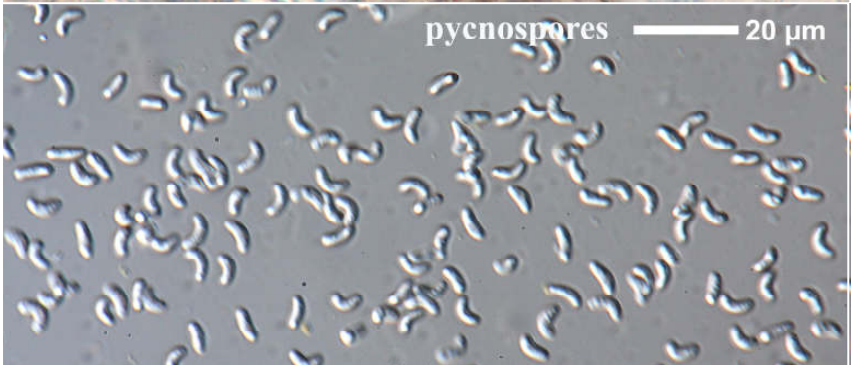
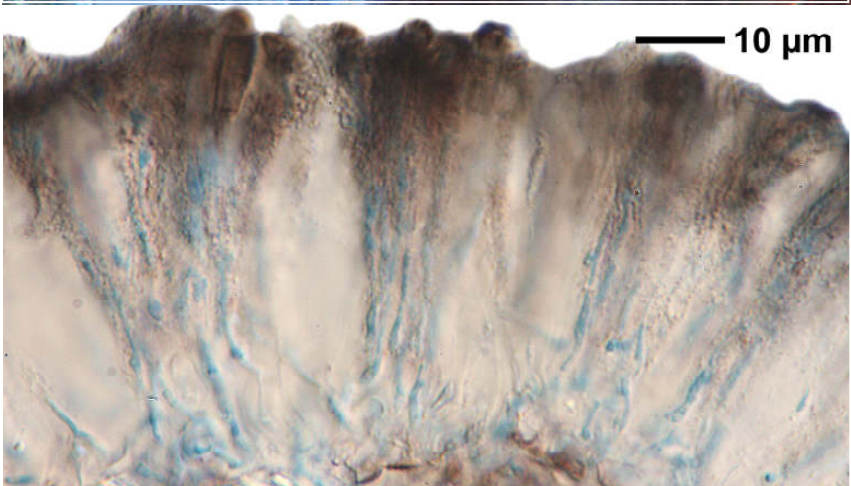
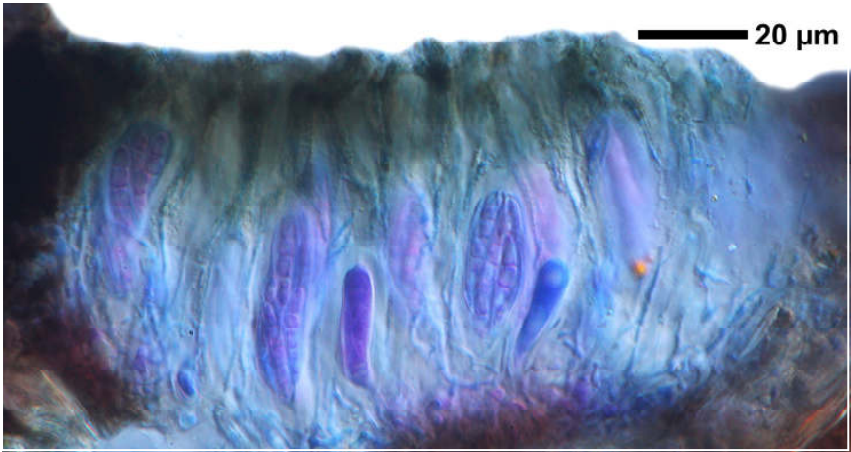




*Opegrapha rufescens*



*Opegrapha rufescens*



*Opegrapha rufescens*