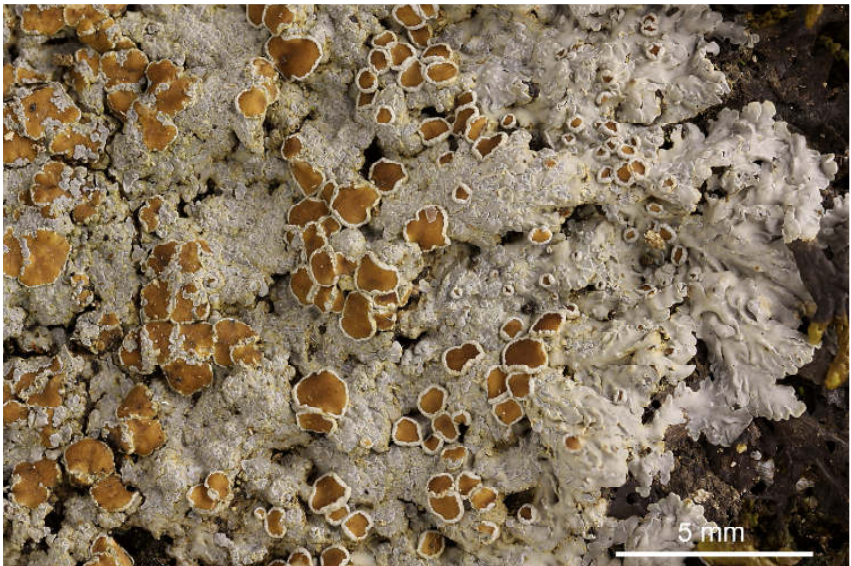


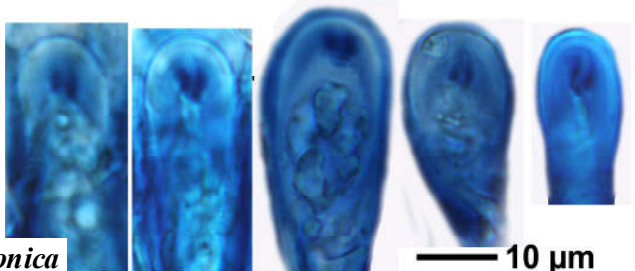
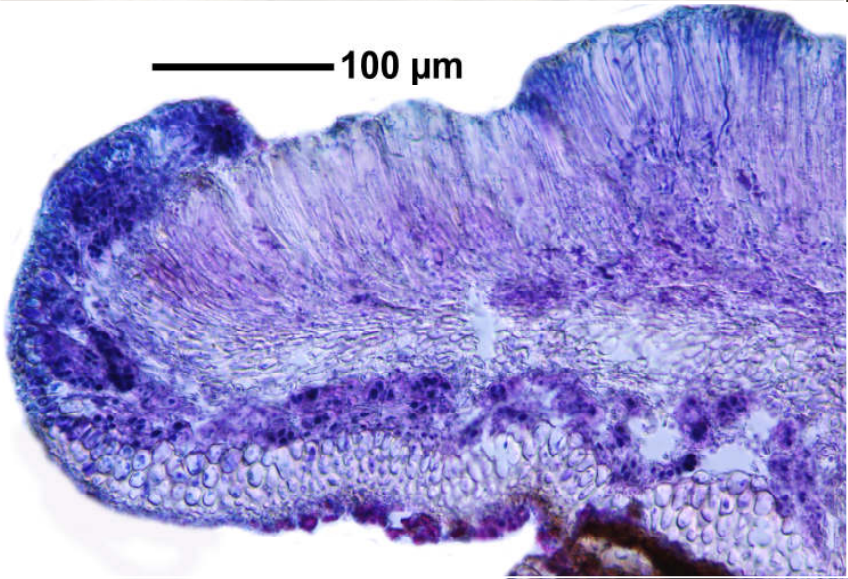
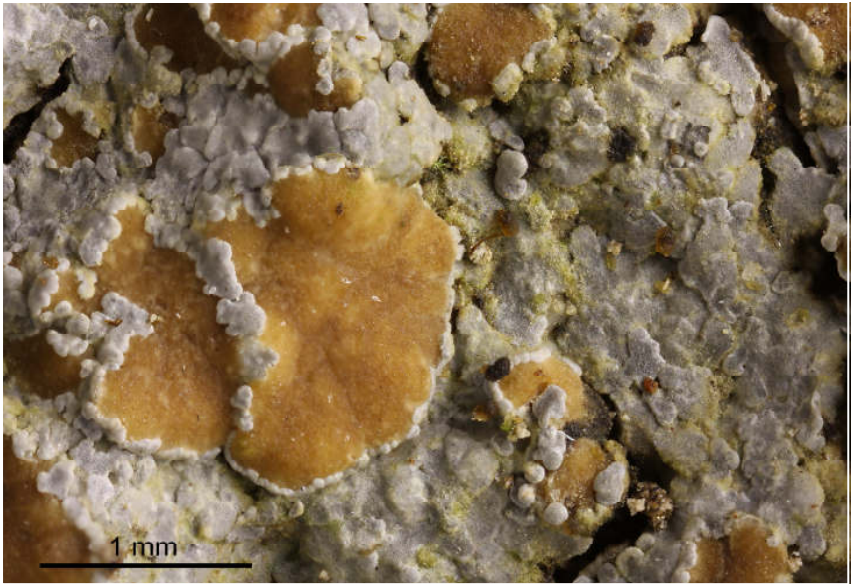
Parmeliella borbonica P.M.Jorg. & Schumm TYPUS

first determined as *Pannaria squamulosa* P.M. Jørg., but according my reexamination all but the amyloid ascus-structure does not fit. Then Jorg. supposed it could be *P. imbricatula* (Lit . zu *Parmeliella imbricatula*: Jørgensen Bryologist 106:126 (2003)). Lastly described we described this sample as n. sp. in Lichenologist 2010 (6).

Text to *Pannaria squamulosa*: Thallus grey-blue to olivaceous, incised squamules, up to 3 mm wide, on crustaceous, blackish prothallus. Apothecia up to 1,5 mm, disc brown. Hymenium I+ blue. **Asci without internal amyloid structure (?)**. Spores hyaline, simple, subglobose, smooth, 10-15 x 8-10 µm. Chemistry: K-, C-, P-, TLC: nil. Corticolous. S-Africa, La Reunion. Lit zu *Pannaria squamulosa* . Jørgensen, Lichenologist 35: 11-20 (2003).

[15265], La Reunion, Takamaka, feuchte waldige Felshänge bei der Elektrostation, 21,09105°S, 55,61998°E, 800, leg. Schumm & Frahm 10.09.2009, det. P.M. Jørgensen.





Parmeliella borbonica