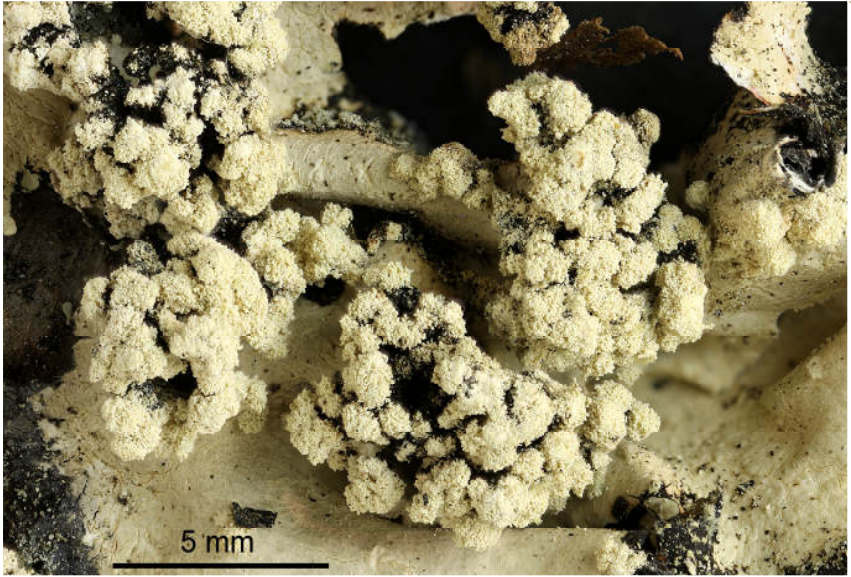
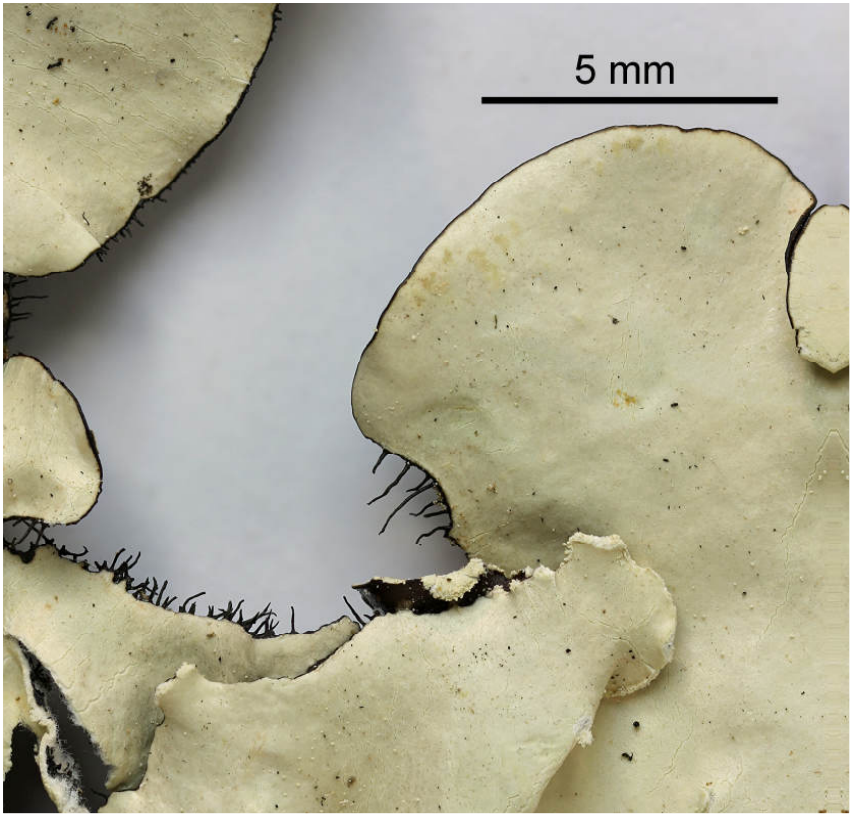


*Parmotrema cristiferum* (Taylor) Hale

Thallus pale grey, not maculate; lobes 0.5-1 cm. Main lobes eciliate, lateral lobes and lobe axils sparingly ciliate, cilia 0.5-1.5 mm, or cilia absent. Soralia mainly marginal on more or less ascending lateral lobes. Medulla white. Underside black with a brown, naked marginal zone. Rhizines short, sparse. Cortex K+yellow (atranorin); medulla K+ yellow turning red, C-, KC-, P+ orange; atranorin salazinic (maj), consalazinic (min) acids. Pantropical.

[7421], Philippines, Negros, Prov. Negros Oriental, Mt. Talinis (Cuernos de Negros), Lunga Nature Trail von Valencia Barangay Lunga (9°16.676' N, 123°13.839' E) bis zum Camp Vendiola (09°16.281' N, 123°11.410' E), zwischen 530-1100 m, bei 730 m, auf *Cocos nucifera*. Leg. Schumm 09.08.2000, det. J.A. JA Elix 10.11.2000.





*Parmotrema cristiferum*