

Parmotrema dilatatum (Vain.) Hale

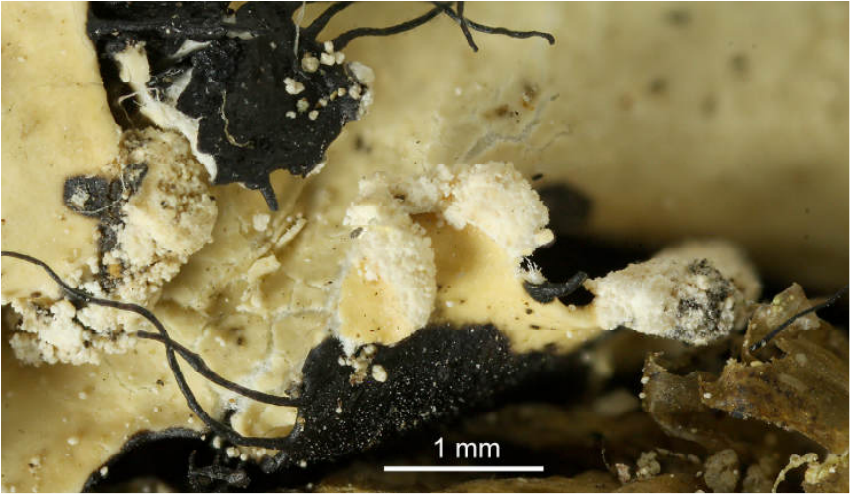
Thallus grey, 3-20 cm wide. Lobes 10-20 mm wide. Eciliate or with cilia. Soralia marginal, linear or subcapitate; soredia granular. Isidia absent. Medulla white or pigmented pale yellowish pink. Lower surface black with broad brown erhizinate marginal zone. Rhizines sparse, simple. Chemistry: cortex K⁺ yellow, C⁻, KC⁻, P⁻; medulla K⁻ or dirty brown, C⁻, KC⁻, P⁺ red; atranorin (minor), chloroatranorin (minor), protocetraric acid (major), virensic acid (minor), usnic acid (trace), echinocarpic acid (trace), methylvirensate acid (trace), subvirensic acid (trace) [Elix, solvent C, HPLC]

[6303], Philippinen, Mindanao, Provinz Bukidnon, westlich Malabalay, tropischer Regenwald am Mt. Kitanglad ab Zwischen-Campsite , 08°09.637' N, 124°55.871' E, 1870-2800 m. Leg. Schumm 19.08.1999, det. J.A. Elix 2000.





Parmotrema dilatatum



Parmotrema dilatatum