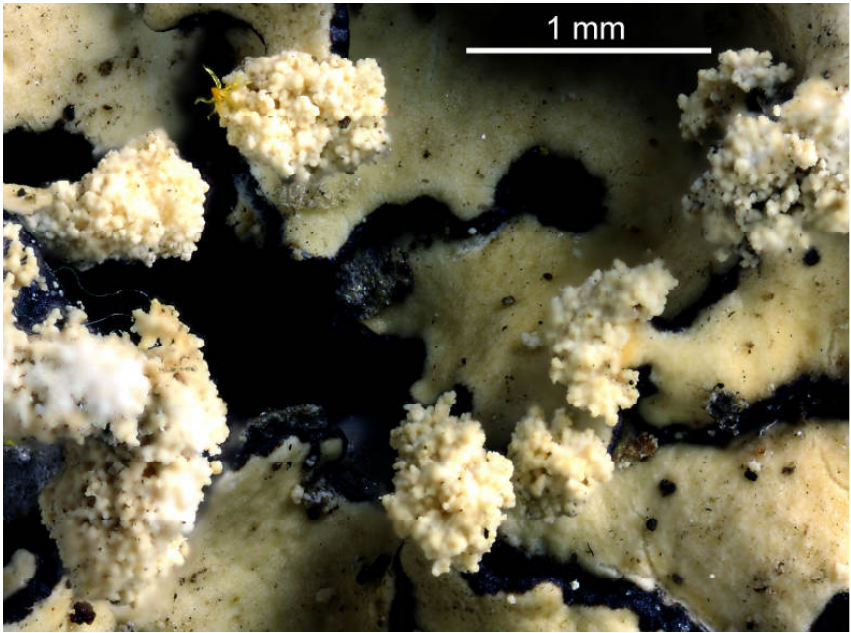


*Parmotrema gardneri* (C.W.Dodge) Sérus.

Soralia marginal to submarginal. Lobes eciliate or rarely sparingly ciliate. Chemistry: atranorin, protocetraric acid; upper cortex K+ yellow; medulla K+ dingy yellow the brown, C-, P+orange-red.

[9867], Australien, Queensland, 12 km S of Forrest Beach, 15 km SE of Ingham, 18°42' S, 146°18' E, 2 m. Acacia-Alphitonia dominated regrowth, on Alphitonia. Leg. J.A. Elix & H. Streimann 22.06.1984 (Nr. 15973), det. J.A. Elix.





*Parmotrema gardneri*