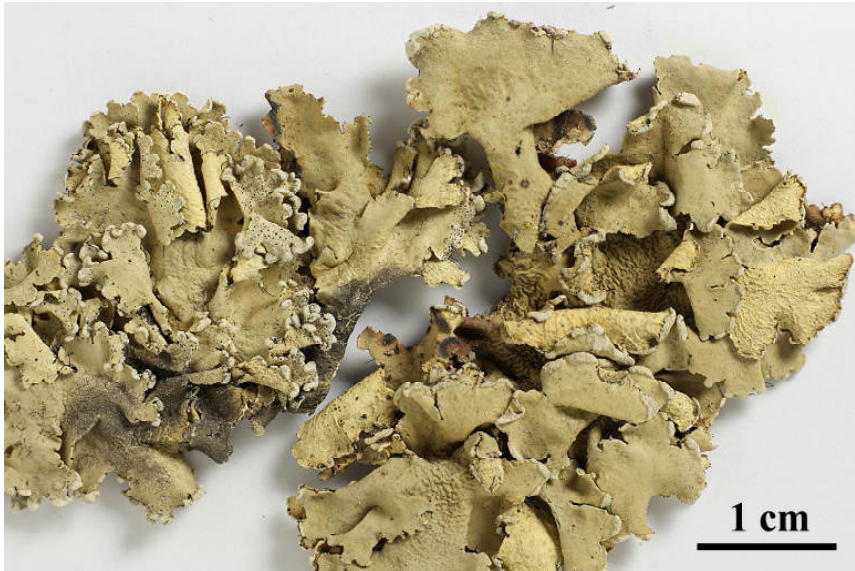
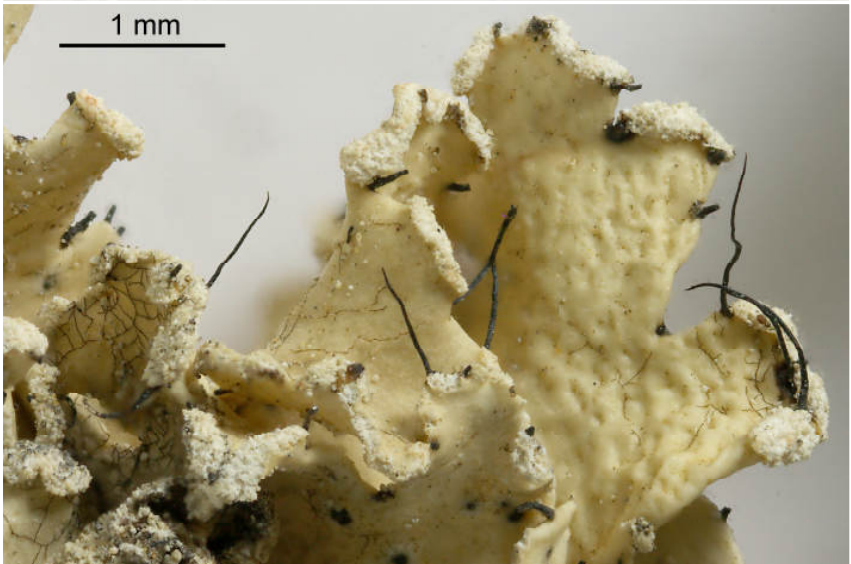
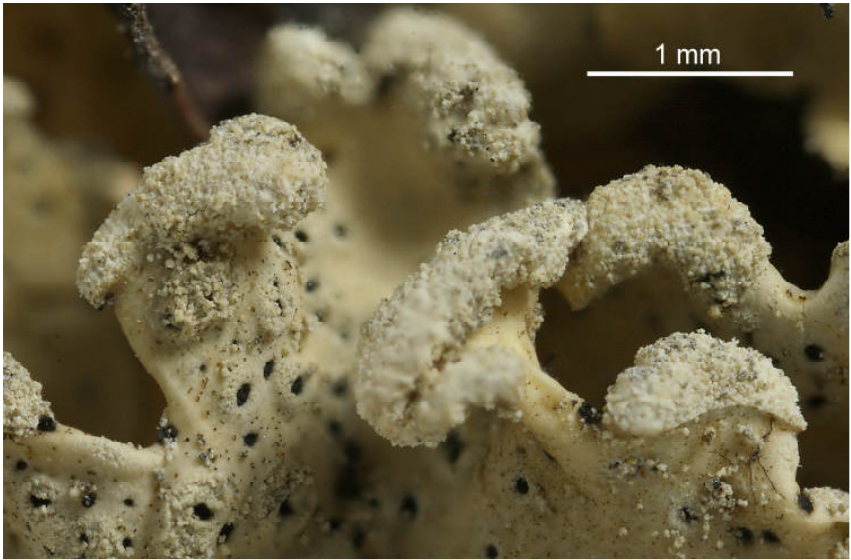


Parmotrema hypotropum (Nyl.) Hale

Thallus grey, loosely adnate, ciliate, usually distinct white maculate. Soredia granular, linear, marginal to submarginal. Isidia absent. Medulla white. Lower surface black, with broad brown to mottled white zone peripherally. Chemistry: cortex K⁺ yellow, C⁻, KC⁻, P⁻; medulla K⁺ yellow>orange, C⁻, KC⁻, P⁺ orange; atranorin, chloroatranorin, norstictic acid (maj), connorstictic acid (min). USA, Europe (unknown from Asia?). Note: Similar to *Parmotrema hypoleucinum* (Steiner) Hale and only different by chemistry.

[16779], USA, Mexico, Baja California Sur, along Rte 22, 21 km W of Ciudad Contitución, 24°59' N, 111°51' W, 30 m, southern Magdalena Region of the Sonoran Desert, on *Jatropha*. Leg. T.H. Nash III, 8 Jan. 1989 (Nr. 26,026), det. T.H. Nash III.





Parmotrema hypotropum



Parmotrema hypotropum