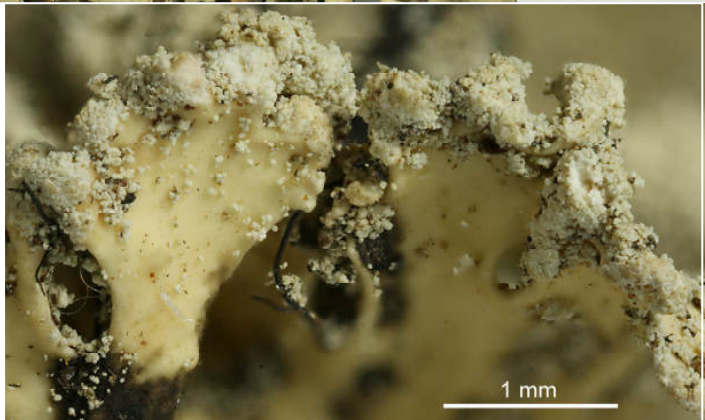
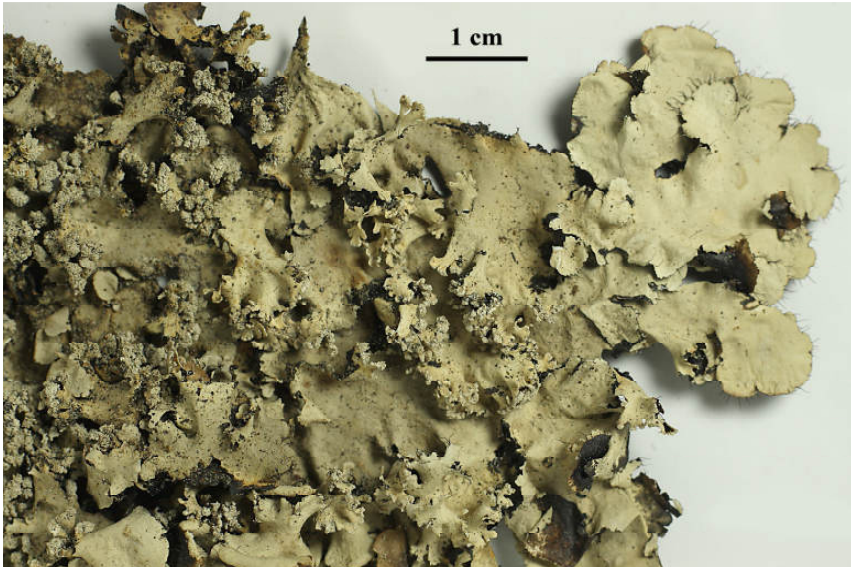
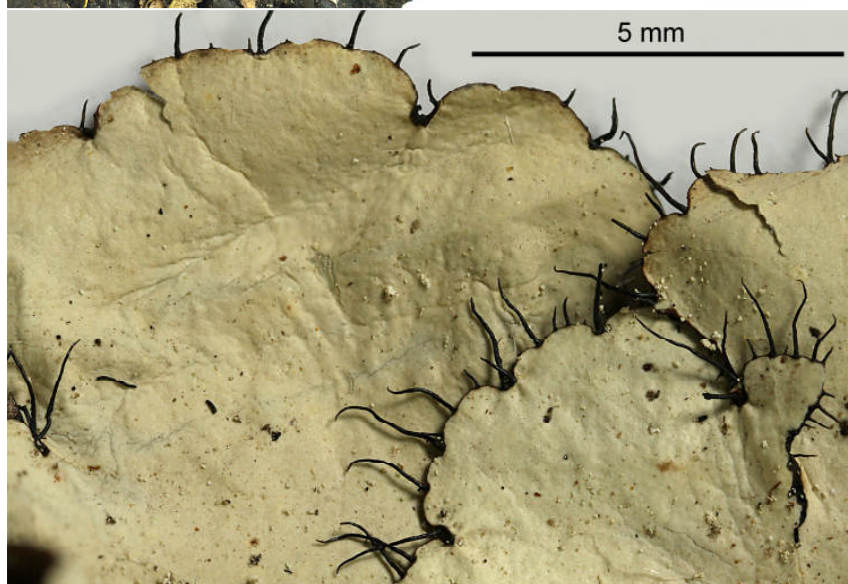


Parmotrema mellissii (C.W.Dodge) Hale

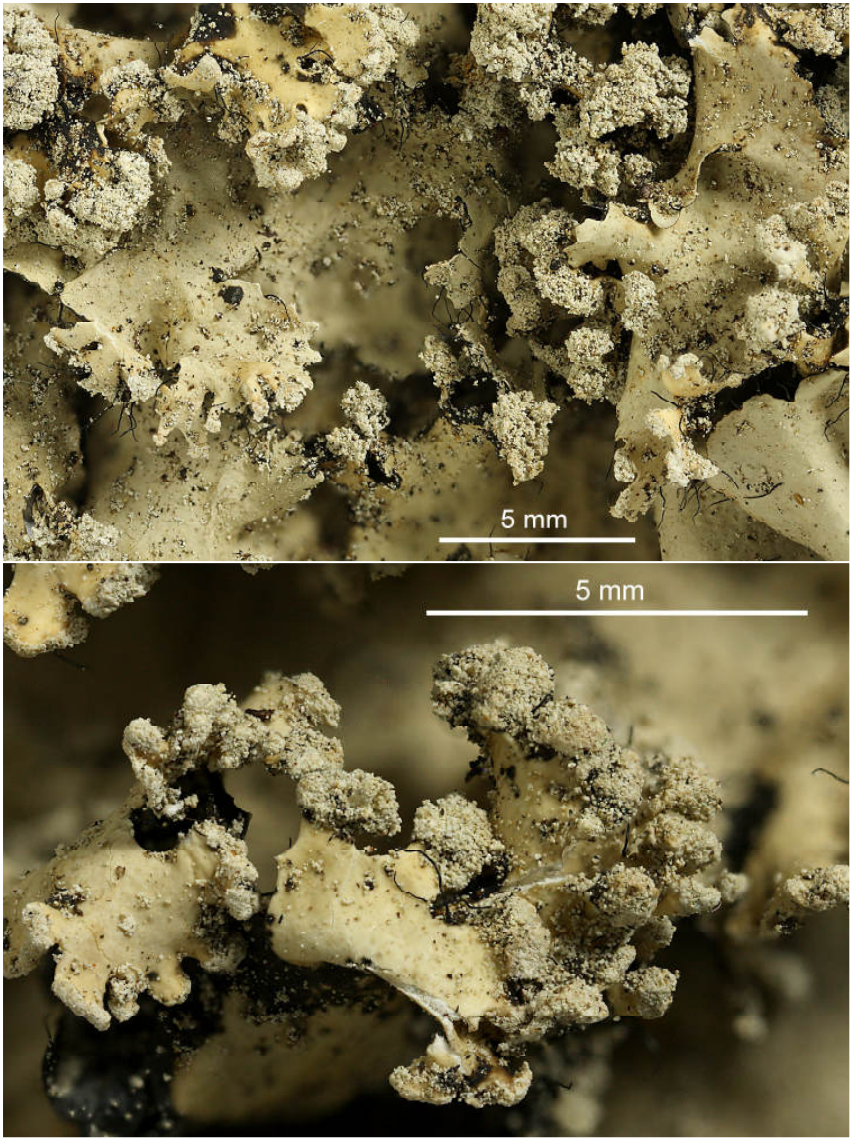
Thallus grey, 5-10 cm wide. Lobes 3-12 mm wide, margins crenate to isidiate. Cilia common, 2-4 mm long. Sorediate, sorediate-isidiate or isidiate especially near lobe margins. Medulla white with brown and K⁺ purple patches. Chemistry: cortex K⁺ yellow; medulla K⁻ or pigmentet parts K⁺ purple, C⁻, KC⁺ red; atranorin (major), alectoronic acid (major), α -collatolic acid (major), dehydro- α -collatolic acid (trace), skyrin (\pm).

[7962], Philippinen, Leyte, Prov. Leyte, Lake Kasudsuran (11°01.539' N, 124°44.931' E, 740 m) bei Barangay Liberty (Ormoc-City), c. 700 m. Leg. Schumm 23.08.2000, det. JA Elix 28.09.2000.





Parmotrema mellissii



Parmotrema mellissii