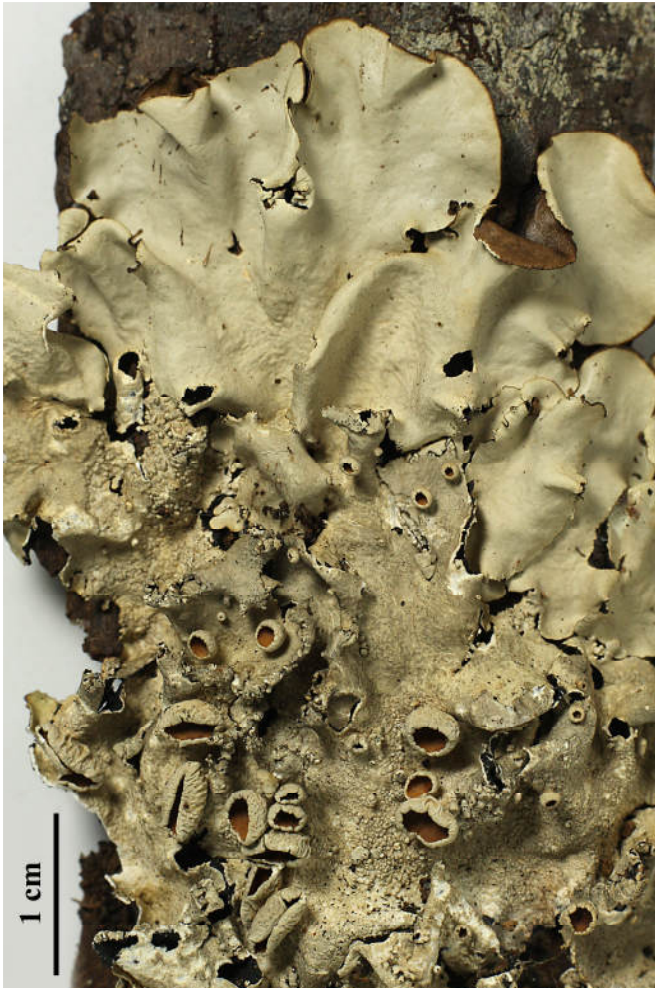
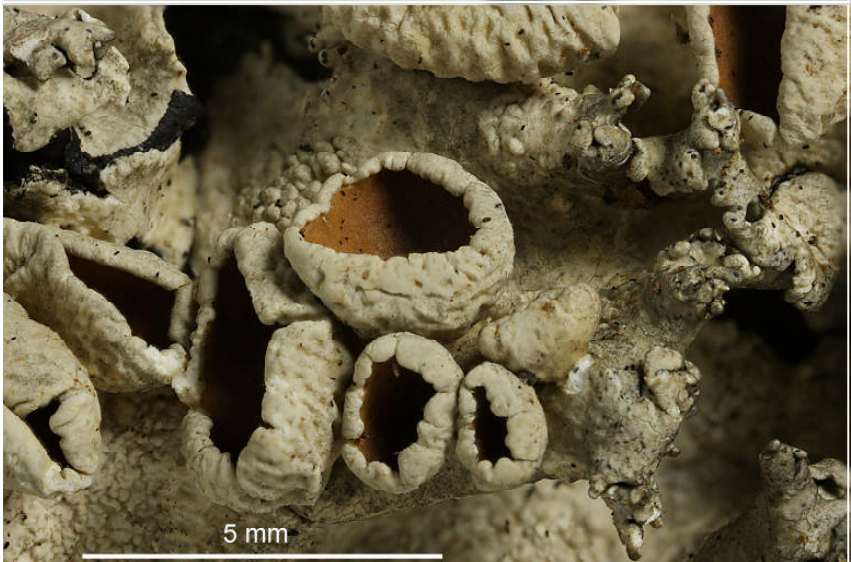


Parmotrema merrillii (Vain.) Hale

Thallus grey, 8-10 cm wide. Lobes 10-15 mm wide, not or sparsely ciliate. Isidia and soredia absent. Apothecia abundant, 4-10 mm. Chemistry: Thallus K⁺ yellow; medulla K⁻, C⁻, KC⁺ orange, P⁺ red; atranorin (minor), protocetraric acid (major). Note: similar to *Parmotrema corniculans* (Nyl.) Hale which contains alectoronic acid. Lit. Hale (1965).

[7757], Philippinen, Leyte, Prov. Leyte, Weg vom Gipfel des Mt. Agipo (10°46.729' N, 124°49.781' E, 885 m) nach Kadwa-An (10°46.249' N, 124°48.167' E, 195 m), bei 444 m. Leg. Schumm 18.08.2000, det. JA Elix 09.11.2000.





Parmotrema merrillii