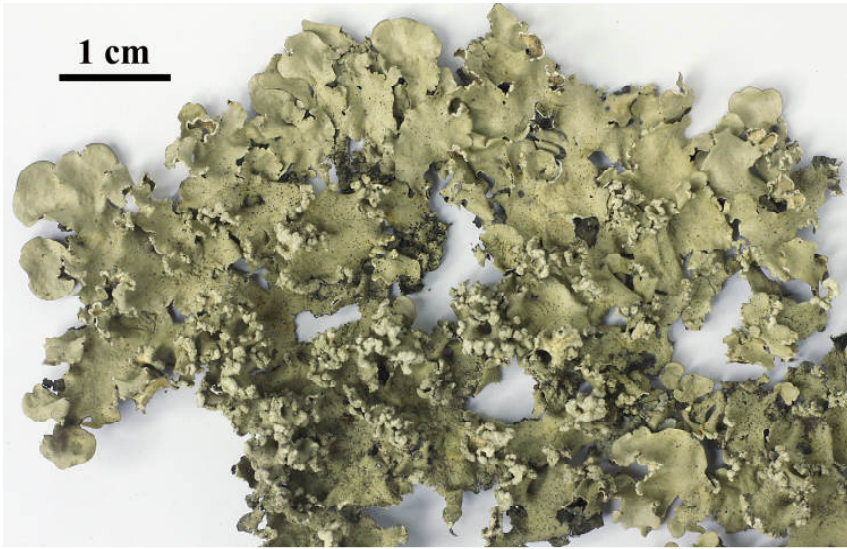
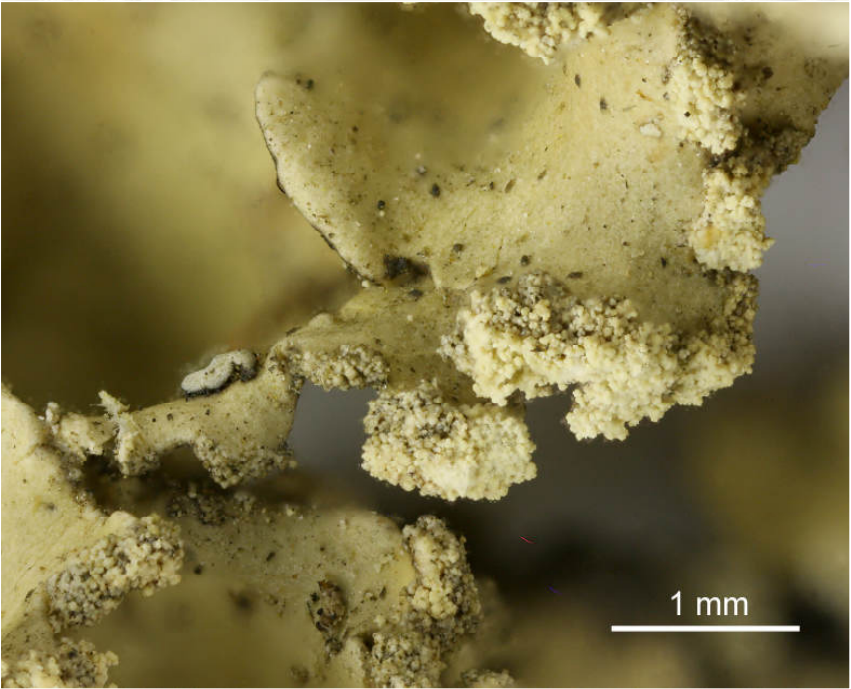
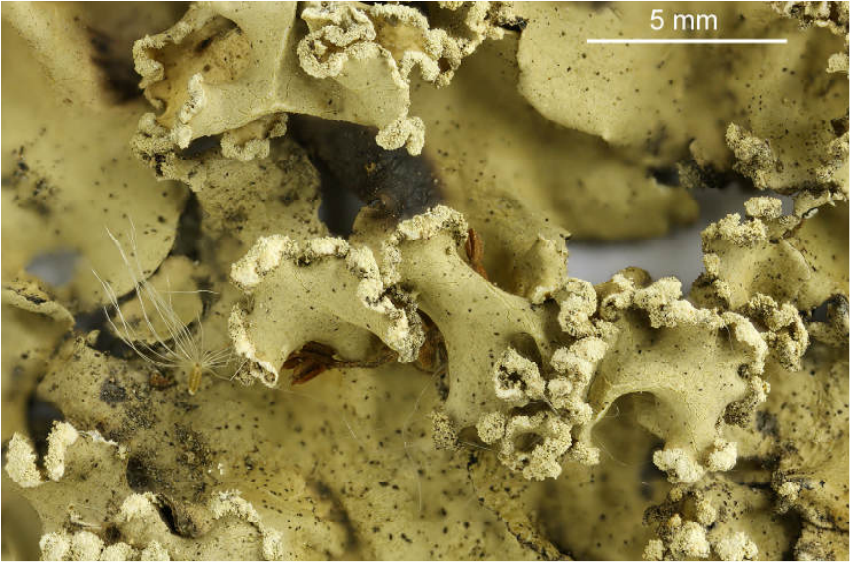


*Parmotrema praesorediosum* (Nyl.) Hale

Thallus 5-10 cm wide, lobes 4-8(-10) mm wide, lacking isidia. Margins ascending, sorediate, eciliate. Cortex K+ yellow, medulla K-, C-, KC-, P-, atranorin (min), chloroatranorin, protopraesorediosic acid (maj), praesorediosic acid (maj), fatty acids (min, tr).

[9552], Thailand, Bergdorf der Akha in der Nähe von Chiang Saen. 20°06.275' N, 99°37.524' E, 700 m, on bark. Leg. Schumm 31.03.2002, det. Schumm 04.2002, test. J.A. Elix 11.2002.





*Parmotrema praesorediosum*



*Parmotrema praesorediosum*