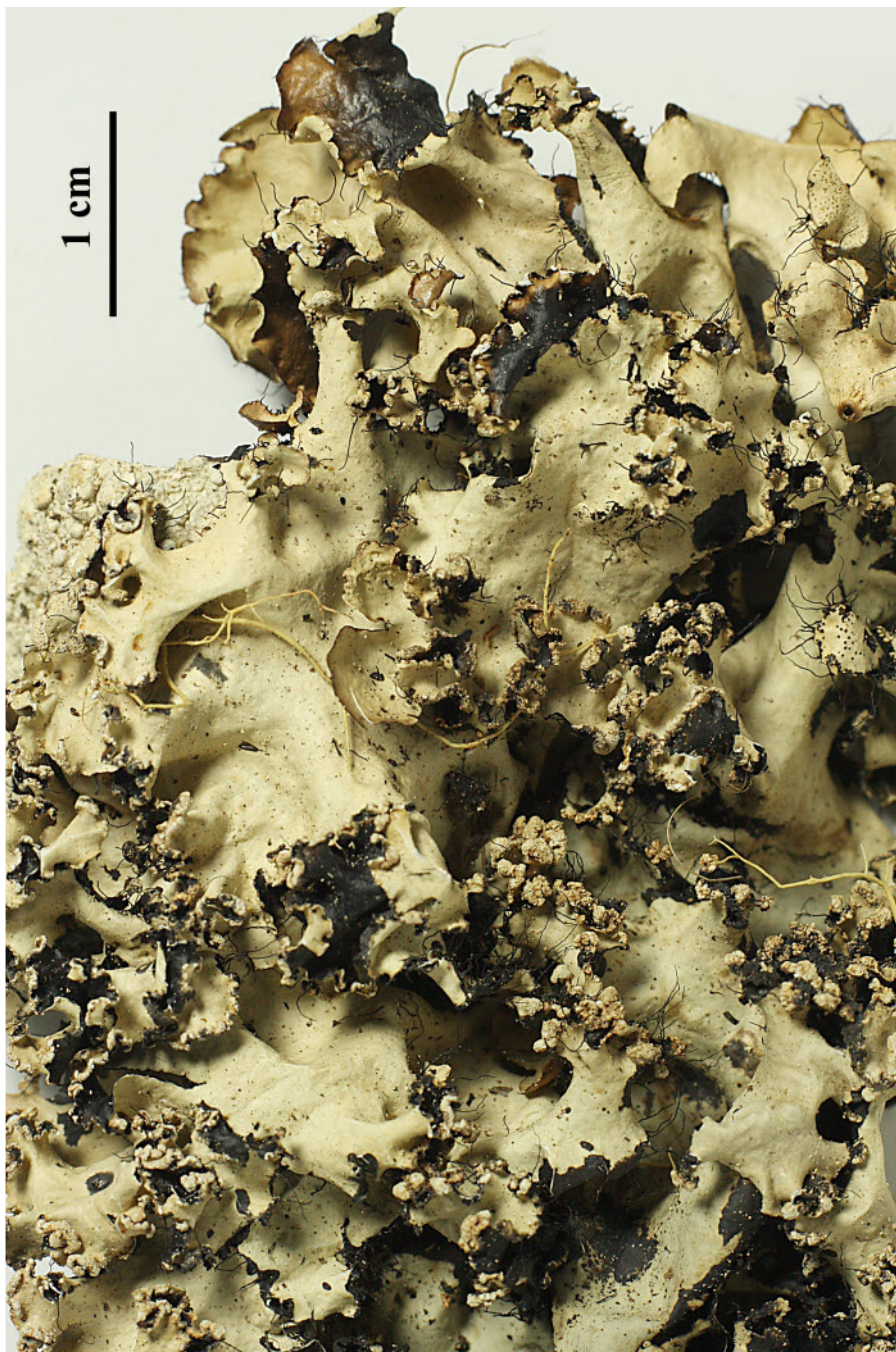
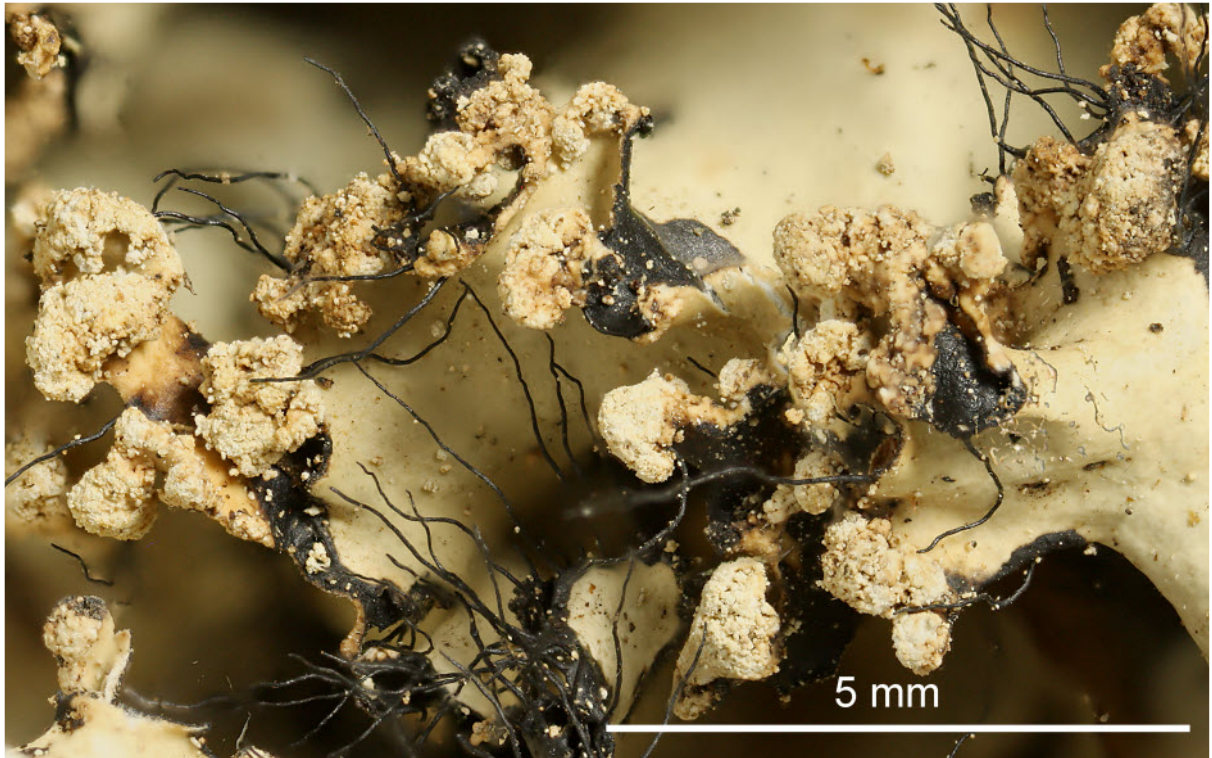


Parmotrema pseudonilgherrense (Asahina) Hale

Thallus grey, 5-10 cm wide. Lobes 8-15 mm wide. Isidia absent. Cilia present. Soralia mainly marginal or submarginal, linear, pustular and punctiform or sometimes spreading and becoming confluent on revolute lobes. Medulla white. Chemistry: cortex K+ yellow; medulla K-, C-, KC+ red, P-; atranorin (minor), alectoronic acid (major), α -collatolic acid (major), methyl-pseudoalectoronate (minor) [det. Elix 2000, solvent C]. .Note: Very similar is *Parmotrema lobulascens* (Steiner) Hale, which contains gyrophoric acid.

[6071], Philippinen, Mindanao, Provinz Cotabato, Mt. Apo, tropischer Bergregenwald am Lake Venado, ca. 07°00.181' N, 125°16.166' E, 2200 m. Leg. Schumm 10.08.1999, det. Schumm 2011.





Parmotrema pseudonilgherrense

1593