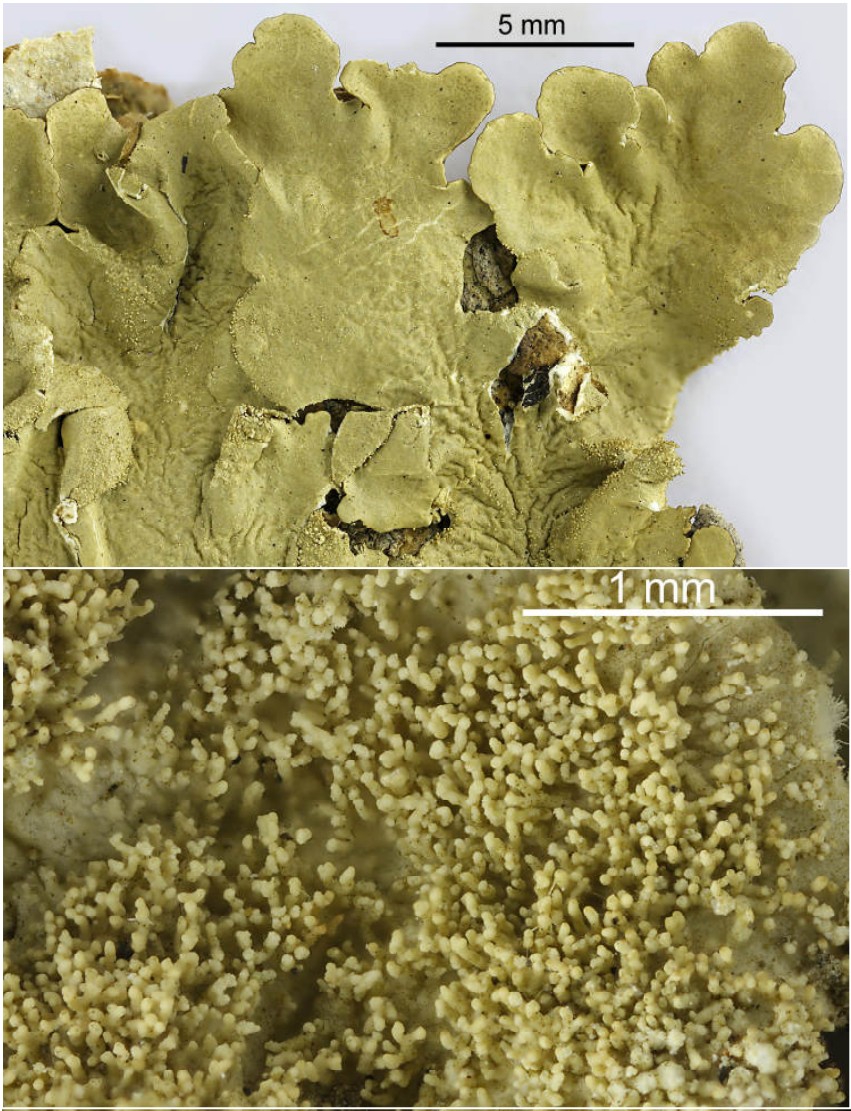


*Parmotrema saccatilobum* (Taylor) Hale

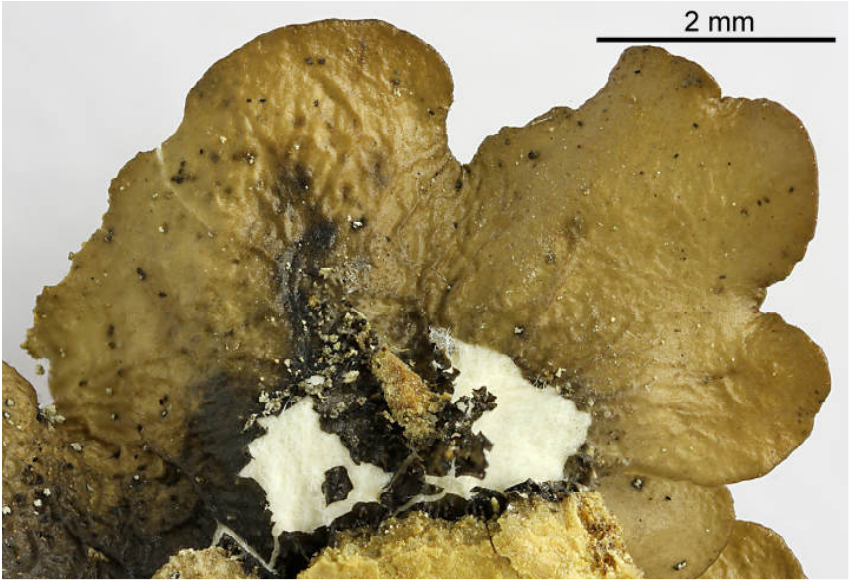
Thallus grey to yellowish-greenish, 8-15 cm wide, with 0.1-0.3 mm high isidia, without soralia, without cilia. Lobes 5-10 mm wide. Medulla white. Lower surface black, in a broad zone at the margins erhizinate and brown. Cortex K+ yellow, medulla K-, C-, KC+ redbrown, P+ brick-red, atranorin (maj), protocetraric acid (maj).

[9535], Thailand, Floatel Jungle Rafts am River Kwai Noi, 14°19.144' N, 98°58.089' E, 108 m, on bark. Leg. Schumm 27.03.2002, det. Schumm 04.2002, test. J.A. Elix 11.2002.





*Parmotrema saccatilobum*



*Parmotrema saccatilobum*