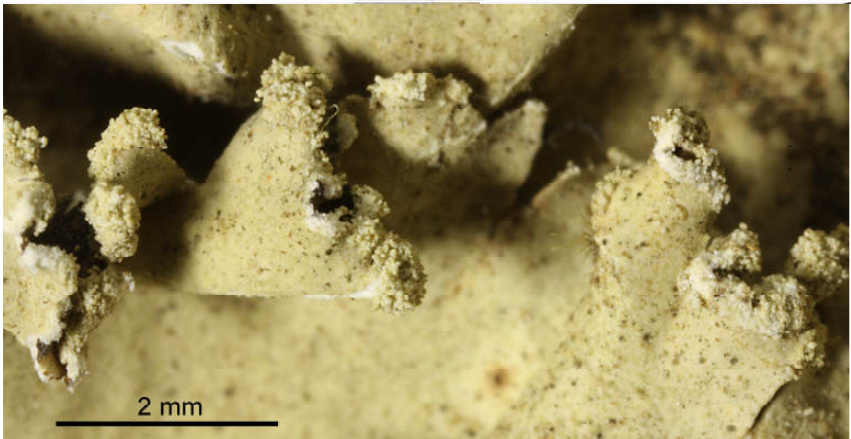
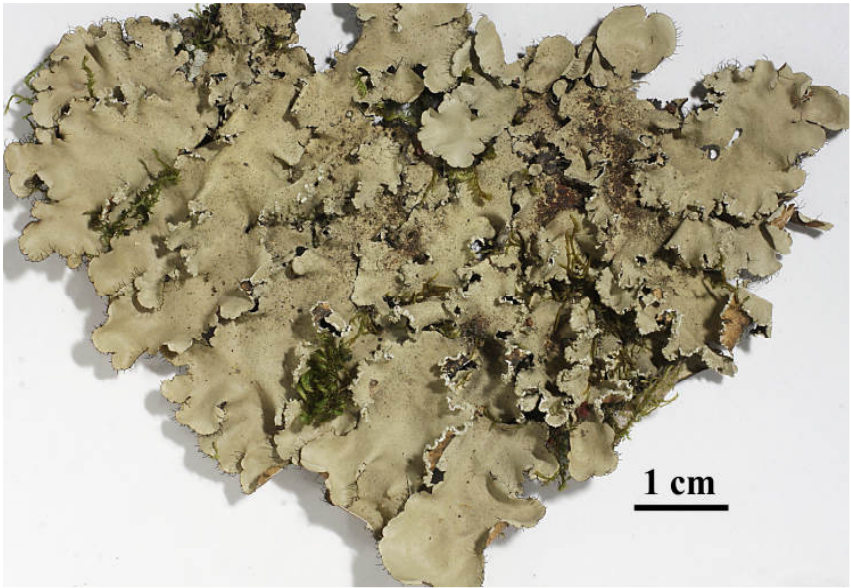


*Parmotrema sancti-angelii* (Lynge) Hale

Thallus pale green to grey-green, loosely adnate, ciliate, emaculate, rugose towards thallus centre. Isidia absent. Soralia linear, mainly marginal. Medulla white. Lower surface black, with brown, erhizinate marginal zone. Chemistry: cortex K+ yellow; medulla K-, C+ pale red, KC+ pale red, P-; atranorin, gyrophoric acid (maj). Pantropical.

[5874], Philippinen, Mindanao, Provinc Cotabato, bei Ilomavis an der Straße nach Kidapawan, 07°02.069' N, 125°11.367' E, 730 m. Leg. Schumm 07.08.1999, det. J.A. Elix 2000, Dupl. in CANB.





*Parmotrema sancti-angelii*