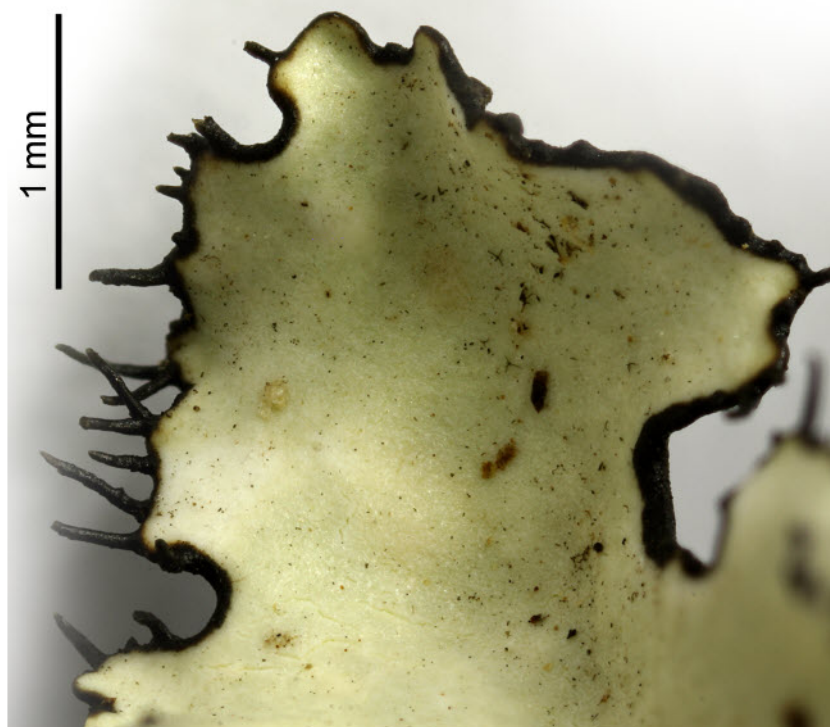
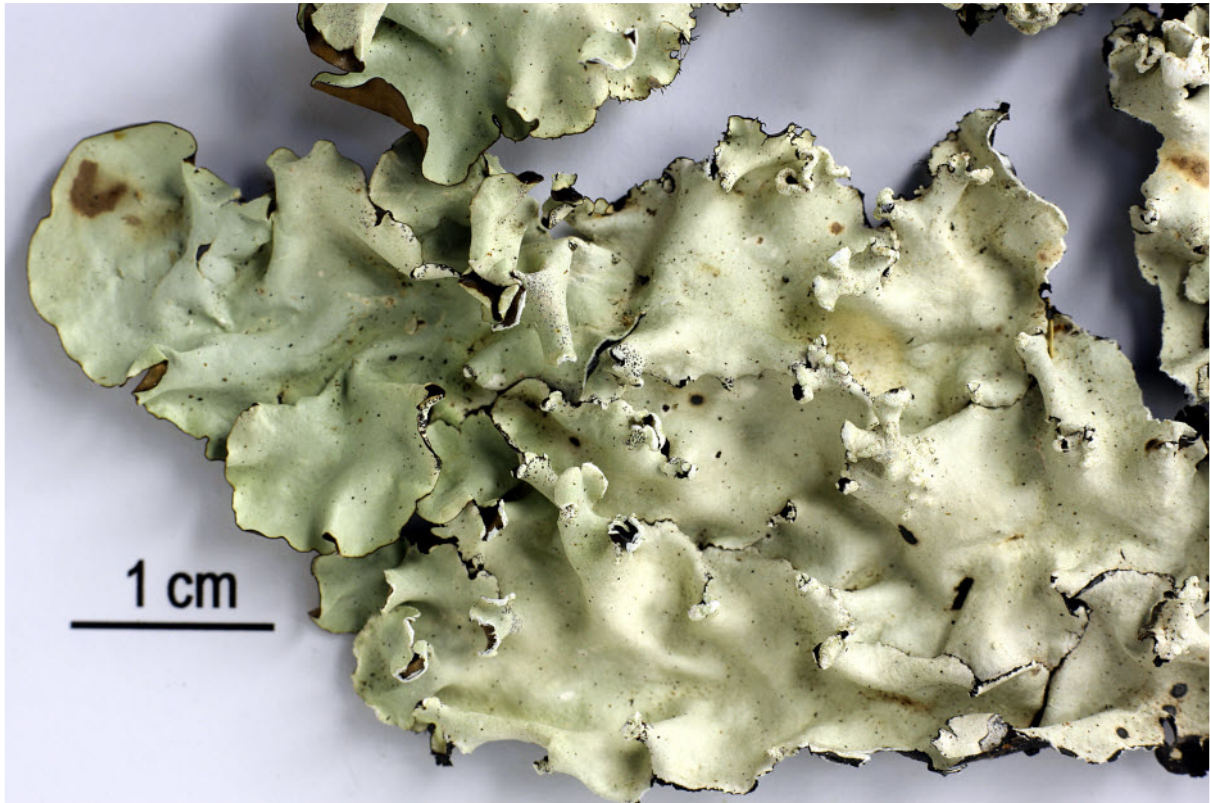
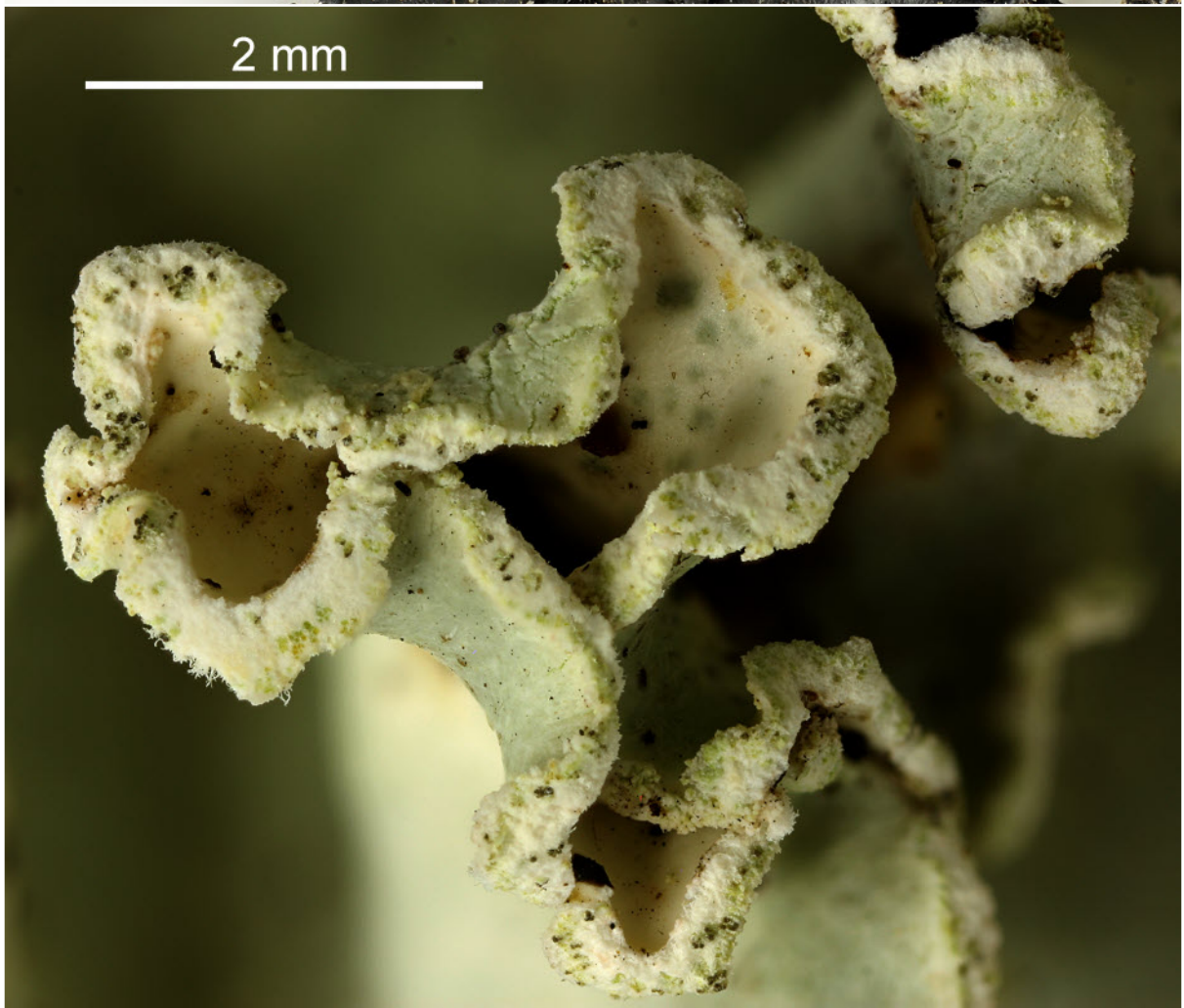


*Parmotrema stuppeum* (Taylor) Hale

With black cilia and marginal soralia. Chemistry: upper cortex K+ yellow, C-, KC-, P-; medulla K+ yellow>>red, C-, KC+ red, P+ orange; atranorin, salazinic acid. Cosmopolitan.

[14465], Seychelles, Praslin, Nationalpark Sentier Glacier Noire, 4°19.916' S, 55°44.465' E, ca. 370 m; auf Granitfelsen. Leg. Schumm & Frahm 30.09.2008, det. Schumm test Aptroot.





*Parmotrema stuppeum*